

#17

**U.S. PUBLIC LAND CORNER
MAINTENANCE**

Corner ID : E1/4 Sec. 4, T18N-R1E

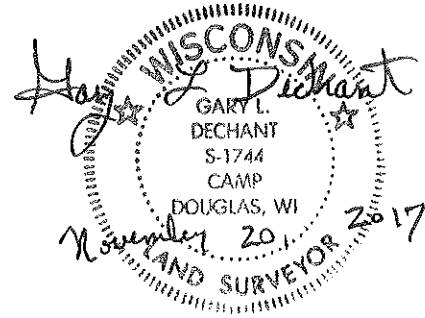
41801042000

DATE	CREW	MONUMENT TYPE -----
October 25, 2017	Zachariah P.Dechant Gary L. Dechant	Existing 2" iron pipe severely bent, straightened and reset from two of G. Simes's reference markers to the west. Falls 2' east of bank of ditch. Set sign 6' west.

References:

	<u>Bearing</u>	<u>Distance</u>
1) Set 3/4"x24"round iron bar in center of east dike, down 8"	N60E	61.09'
2) Set 3/4"x24" round iron bar in center of east dike, down 8"	S70E	59.20'
3) Set 3/4"x24" round iron bar, down 8 in center of west dike	S60W	16.44'
4) Set 3/4"x24" round iron bar, down 8" in center of west dike	N70W	16.55'
5) Existing 3/4" iron bar, down 10" west edge of west dike	West	27.02'
6) Existing 3/4" iron bar, down 15" center of west dike	West	12.01'

Spike/Harrison and reference markers set on straight lines.



I, Garold A. Sime, do hereby certify that on the 7th day of April 1991, I found ~~(evidence)~~ (no evidence) of the E 1/4 corner of Section 4, T 18 N, R 1 E Fourth Principal Meridian, and I re-established said corner according to the Wisconsin Statutes as shown and described hereon.

Dated this 18th day of April 1991.

Garold A. Sime

 Monroe County Surveyor
Title

History of corner establishment since Original Government Survey

No History of corner location since the Original Government Survey.

Description of corner evidence found:

I established this corner on line and at the prorated distance between the Northeast and Southeast corners of Section 4.

**See Reverse Side
 For Maintenance**

COUNTY SURVEYOR FORM NO. 1

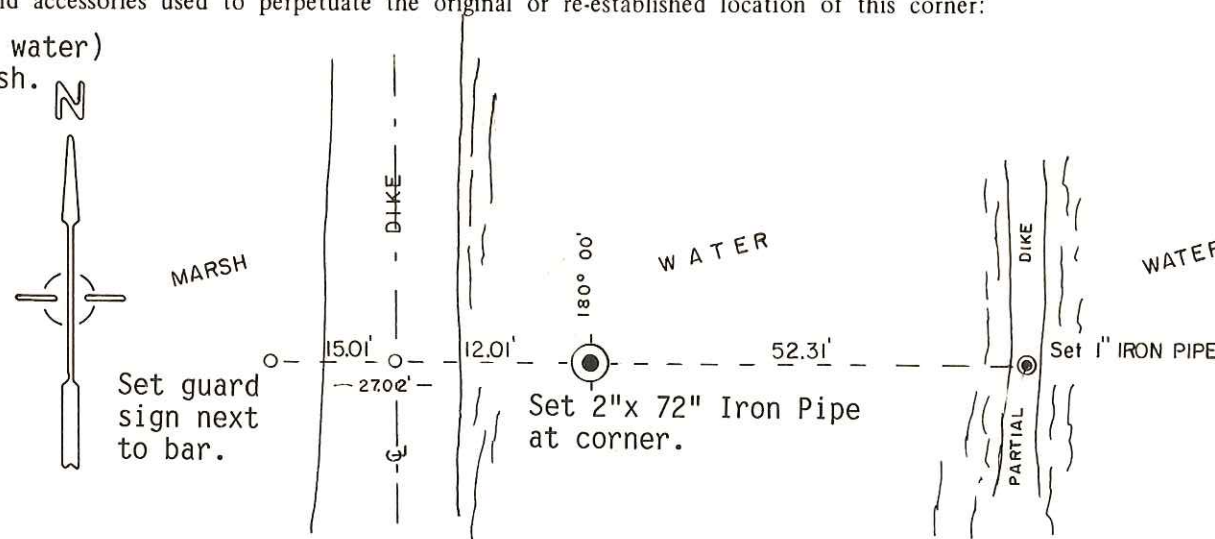
Description of corner and witness monuments, references and accessories used to perpetuate the original or re-established location of this corner:

Set 2" x 72" Iron Pipe at corner (lands in water)
 Set guard sign next to iron bar set in marsh.

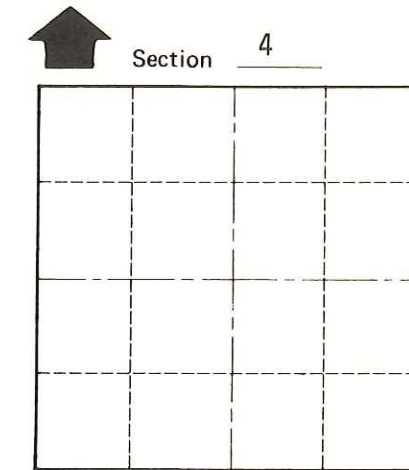
Witnesses to corner location:

Garold A. Sime, R. L. S.

John Kenworthy



o = Set 3/4"x 24" Iron Bar



O = LOCATION CORNER

T 18 N R 1 E

WISCONSIN

SURVEY CONTROL ORDER

Horizontal	_____
Vertical	_____

WISCONSIN COORDINATE SYSTEM

Corner	East (X)	North (Y)	Elevation (Z)	Zone
Control Sta. Name				

~~City, Village~~ or Town of Byron
 County of Monroe