

# 28

**U.S. PUBLIC LAND CORNER  
MAINTENANCE**

**Corner ID :** S1/4 Sec. 4, T18N-R1E  
**41801040020**

<u>DATE</u>	<u>CREW</u>	<u>MONUMENT TYPE</u> -----
September 30, 2015	Zachariah P. Dechant Gary L. Dechant	Replaced bent 3/4" round iron bar with a 3/4"x24" hex iron bar. Down 6". 90' east of Dove Ave-Copper Road intersection.

References:

	<u>Bearing</u>	<u>Distance</u>
1) Set 3/4"x24" round iron bar, down 6" in lawn on line with west side of house to north	N56E	76.14'
2) Set 3/4"x24" round iron bar, down 6", north of 10" Red Pine at NW cor. plantation	S36E	63.70'
3) Existing NGS monument in concrete in middle of road intersection, 09-181E	S56W	40.02"
4) Set 3/4"x24" round iron bar, down 6"	N36W	58.31'

**Corner & reference markers set on straight lines.**



I, Harley A. Sime, do hereby certify that on the 3rd day of June 1980 I found (evidence) ~~(no evidence)~~ of the S 1/4 corner of Section 4, T 18 N, R 1 E Fourth Principal Meridian, and I re-established said corner according to the Wisconsin Statutes as shown and described hereon.

Dated this 26th day of Feb. 1981.

Harley A. Sime, R.L.S. 355

County Surveyor  
Title

**History of corner establishment since Original Government Survey**

Duane Marten set an iron bar at this corner in August of 1969. He again used it in an October, 1973 survey. Pritzlaff used this corner in April of 1975. The old town road records show the corner to be in the road.

Description of corner evidence found:

Found a 3/4" iron bar used in previous survey work.

**See Reverse Side For Maintenance**

COUNTY SURVEYOR FORM NO. 1

Description of corner and witness monuments, references and accessories used to perpetuate the original or re-established location of this corner:

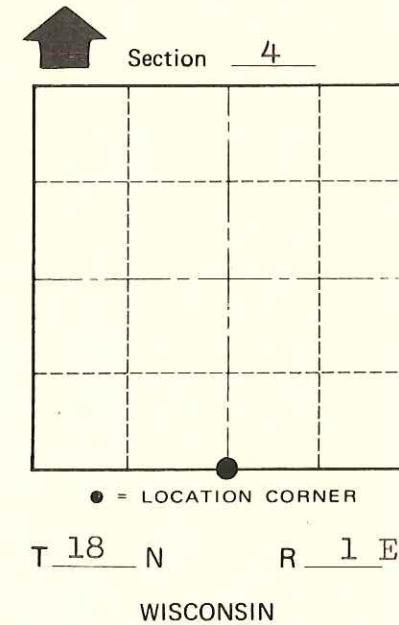
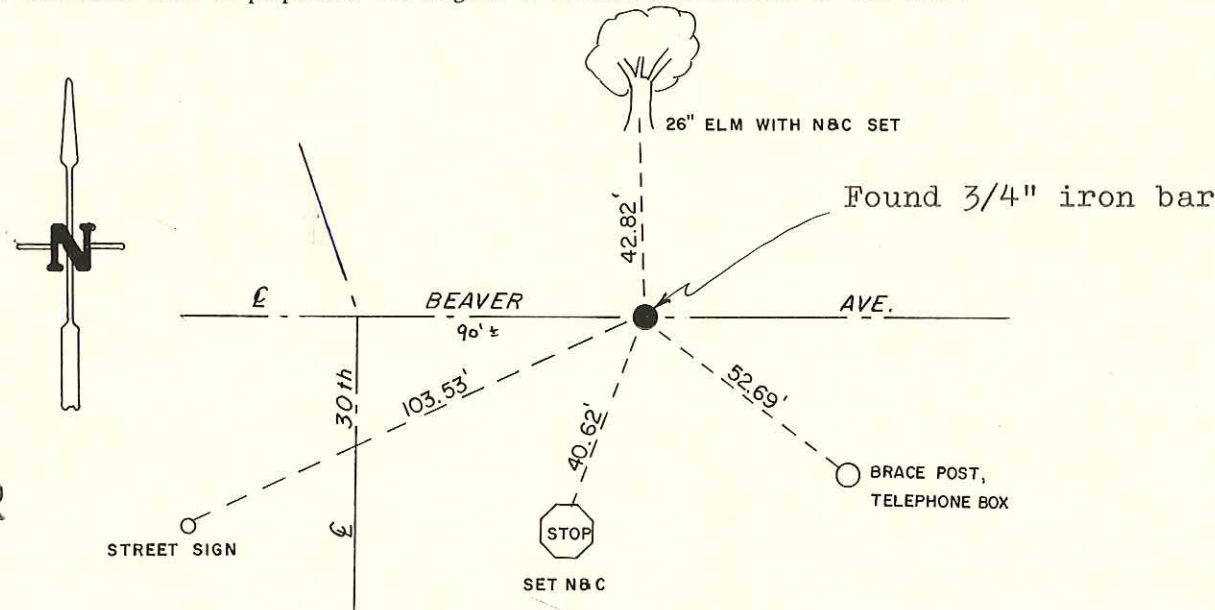
Witnesses to corner location:

M. Scott Sowers

T. Tormoen

C. Dade

**Approved: HARLEY A. SIME  
MONROE CO. SURVEYOR**



*SIGN PLACED 12/22/86  
Kenworthy*

SURVEY CONTROL ORDER

Horizontal	_____
Vertical	_____

WISCONSIN COORDINATE SYSTEM

Corner	East (X)	North (Y)	Elevation (Z)	Zone
Control Sta. Name				

~~City, Village or~~ Town Byron  
County of Monroe