

27

**U.S. PUBLIC LAND CORNER
MAINTENANCE**

Corner ID : SE Sec. 4, T18N-R1E

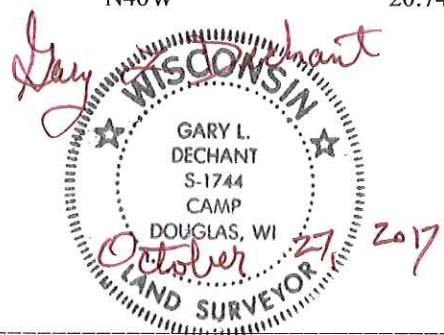
41801040000

<u>FIELD DATE</u>	<u>CREW</u>	<u>MONUMENT TYPE</u> -----
September 21, 2017	Zachariah P. Dechant Gary L. Dechant	Existing Harrison, intact, down 8". Set bolts 1' N and 1" E. Center line of Dove Ave, Approx 20' east of east end of bridge

References:

	<u>Bearing</u>	<u>Distance</u>
1) Set 3/4"x24" round iron bar, down 6" on top of high dike	N50E	74.00'
2) Set 3/4" x 24" round iron bar down 8" in south shoulder of road	S46E	20.24'
3) Existing cross on wing of concrete bridge	S50W	19.80' (19.80')
4) Existing cross on wing of concrete bridge	N46W	20.74' (20.71')

Harrison and reference markers set on a straight lines.



I, Harley A. Sime, do hereby certify that on the 3rd day of June 1980, I found (evidence) (~~no evidence~~) of the SW corner of Section 3, T 18 N, R 1 E Fourth Principal Meridian, and I re-established said corner according to the Wisconsin Statutes as shown and described hereon.

Dated this 26th day of Feb. 1981.
Harley A. Sime, R.L.S. 355

County Surveyor

Title

History of corner establishment since Original Government Survey

In his survey notes of the 1930's, Kennedy shows this corner as being in the centerline of the road. Duane Marten set an iron bar at this corner in August of 1969, 14 feet East of the bridge. He used this corner again in an October, 1973 survey. Pritzlaff used this corner in April of 1975. The old town road records show this corner to be in the road.

Description of corner evidence found:

Found a 3/4" iron bar used in previous survey work, removed it and replaced it with a Harrison marker.

See Reverse Side For Maintenance

COUNTY SURVEYOR FORM NO. 1

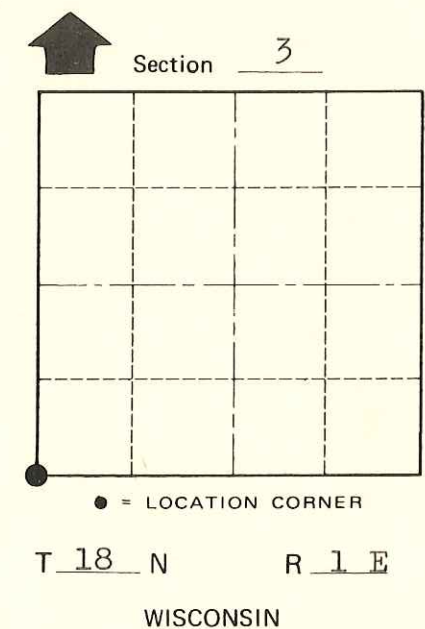
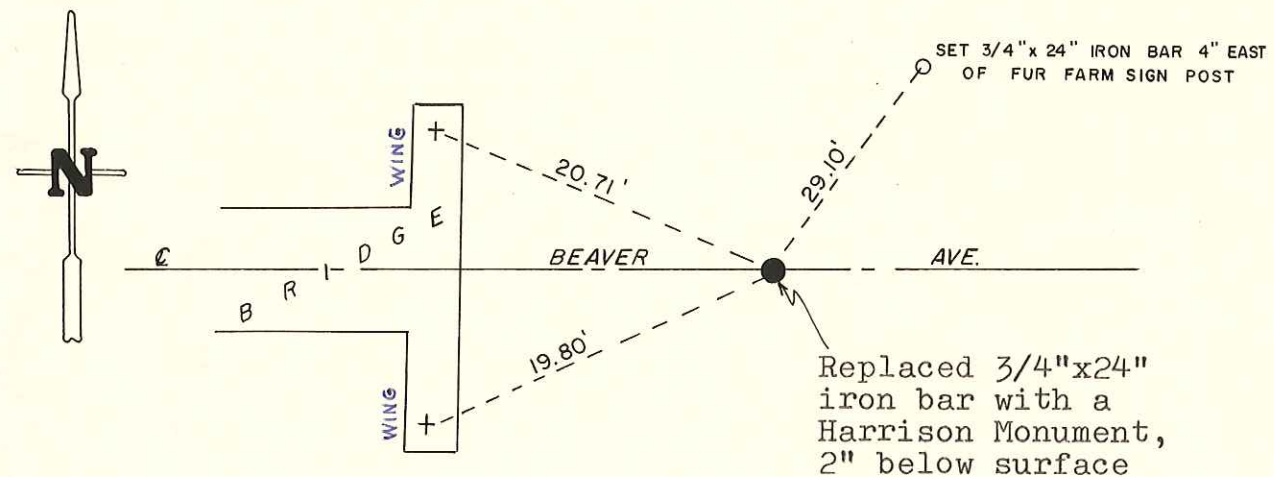
Description of corner and witness monuments, references and accessories used to perpetuate the original or re-established location of this corner:

Witnesses to corner location:

M. Scott Sowers

T. Tormoen

C. Dade



**Approved: HARLEY A. SIME
 MONROE CO. SURVEYOR**

SURVEY CONTROL ORDER

Horizontal	_____
Vertical	_____

WISCONSIN COORDINATE SYSTEM

Corner	East (X)	North (Y)	Elevation (Z)	Zone
Control Sta. Name				

*SIGN PLACED 12/22/86
 Kenworthy*

~~City, Village or~~ Town Byron
 County of Monroe