

18

**U.S. PUBLIC LAND CORNER
MAINTENANCE**

Corner ID : E1/4 Sec. 3, T18N-R1E

41801032000

<u>FIELD DATE</u>	<u>CREW</u>	<u>MONUMENT TYPE -----</u>
September 21, 2017	Zachariah P. Dechant Gary L. Dechant	Replaced bent 1/4" hexagon iron bar with 1/4"x24" round iron bar Down 6". All previous ties disturbed or destroyed. 3' east of center line Dragonfly Road. Swampy both sides of road. On line with down fence to east and shallow ditch.

References:

	<u>Bearing</u>	<u>Distance</u>
1) Set 3/4"x24" round iron bar, down 6" on east shoulder of road	N36E	14.84'
2) Set 3/4" x 24" round iron bar down 6" on east shoulder of road	S24E	24.39'
3) Set 3/4" x24" round iron bar, down 6" on west shoulder of road	S36W	29.68
4) Set 3/4"x24" round iron bar, down 6" on west shoulder of road	N24W	40.30'

Corner and reference markers set on a straight lines.



I, Harley A. Sime, do hereby certify that on the 12th day of June 1980 I found W 1/4 (no evidence) of the corner of Section 2, T 18 N, R 1 E Fourth Principal Meridian, and I re-established said corner according to the Wisconsin Statutes as shown and described hereon.

Dated this 26th day of Feb. 1981.

Harley A. Sime, R.L.S. 355

County Surveyor

Title

History of corner establishment since Original Government Survey

The old town road records show the corner to be in the road. In his survey notes of the 1930's, Kennedy was at this corner.

Description of corner evidence found:

Set an iron bar at the corner on line between the section corners and at a distance proportionate to the original government notes.

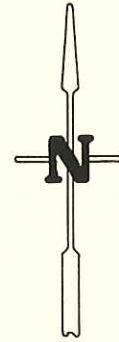
See Reverse Side For Maintenance

Description of corner and witness monuments, references and accessories used to perpetuate the original or re-established location of this corner:

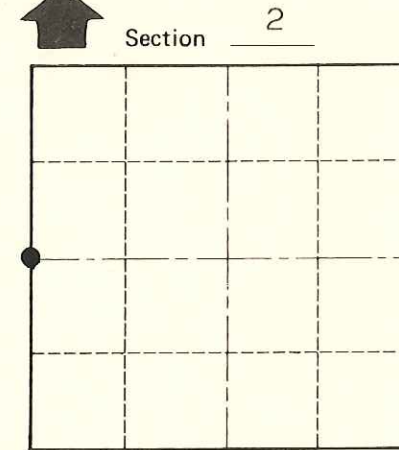
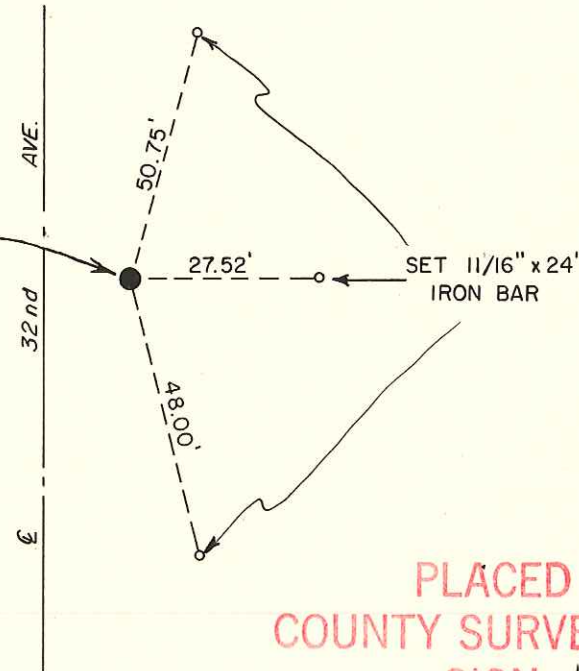
Witnesses to corner location:

M. Scott Sowers

T. Tormoen



Set 1/4" iron bar 2"+ below ground surface, 3'+ east of road centerline



T 18 N R 1 E

WISCONSIN

PLACED COUNTY SURVEYOR'S SIGN 6-17-87

**Approved: HARLEY A. SIME
MONROE CO. SURVEYOR**

SURVEY CONTROL ORDER

Horizontal _____

Vertical _____

WISCONSIN COORDINATE SYSTEM

Corner	East (X)	North (Y)	Elevation (Z)	Zone
Control Sta. Name				

~~City, Village~~ Town Byron

County of Monroe

COUNTY SURVEYOR FORM NO. 1