

26

**U.S. PUBLIC LAND CORNER
MAINTENANCE**

Corner ID : S1/4 Sec. 3, T18N-R1E

41801030020

<u>FIELD DATE</u>	<u>CREW</u>	<u>MONUMENT TYPE</u> -----
September 20, 2017	Zachariah P. Dechant Gary L. Dechant	Replaced bent 1 1/4" iron bar with 1" iron pipe, down 6" Set bolts 1' west and 1' south. 5' north of center line Dove Ave.

References:

	<u>Bearing</u>	<u>Distance</u>
1) Set 3/4"x24" round iron bar, down 8"	N57E	54.41'
2) Existing 3/4" round iron bar, down 6", 5' north of 6" Red Oak	S10E	72.47'
3) Set 3/4"x24" round iron bar, down 8"	S57W	92.38'
4) Set 3/4"x24" round iron bar, down 6", 5' SE of 14" Red Oak	N10W	46.43'

1" Iron pipe at corner and reference markers set on straight lines.



I, Harley A. Sime, do hereby certify that on the 3rd day of June 1980, I found (evidence) (~~no evidence~~) of the S 1/4 corner of Section 3, T 18 N, R 1 E Fourth Principal Meridian, and I re-established said corner according to the Wisconsin Statutes as shown and described hereon.

Dated this 26th day of Feb. 19 81.

Harley A. Sime, R.L.S. 355

 County Surveyor
Title

History of corner establishment since Original Government Survey

The old town road records show this corner to be in the road. In August of 1969, Duane Marten set an iron bar equidistant and on line between the section corners.

Description of corner evidence found:

Found a 3/4" iron bar used in previous survey work, removed it and replaced it with a 1 1/4" iron bar.

See Reverse Side For Maintenance

COUNTY SURVEYOR FORM NO. 1

Description of corner and witness monuments, references and accessories used to perpetuate the original or re-established location of this corner:

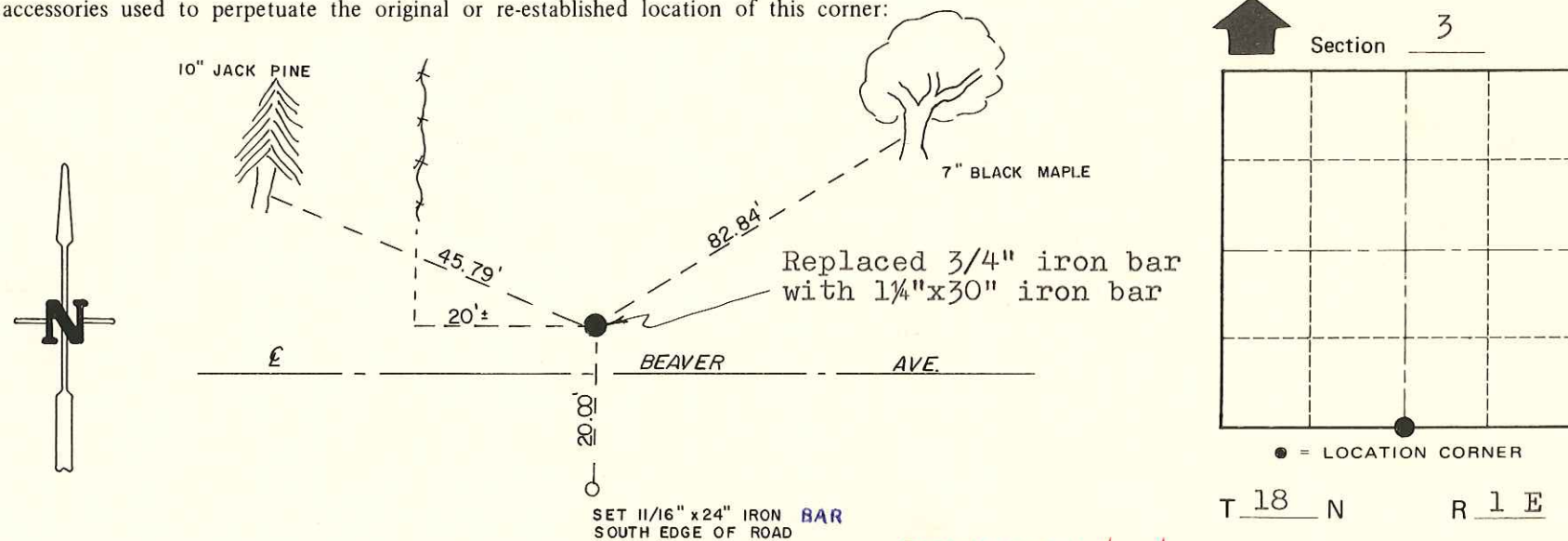
Witnesses to corner location:

M. Scott Sowers

T. Tormoen

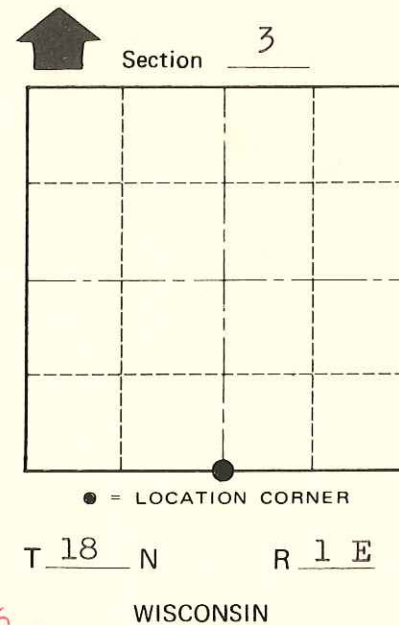
C. Dade

**Approved: HARLEY A. SIME
 MONROE CO. SURVEYOR**



(All trees double blazed with N&C's set)

*SIGN PLACED 12/22/86
 Kenworthy*



SURVEY CONTROL ORDER

Horizontal	_____
Vertical	_____

WISCONSIN COORDINATE SYSTEM

Corner	East (X)	North (Y)	Elevation (Z)	Zone
Control Sta. Name				

~~City, Village or~~ Town Byron
 County of Monroe