

# 25

**U.S. PUBLIC LAND CORNER  
MAINTENANCE**

**Corner ID : SE Sec.3, T18N-R1E**

**41801030000**

<u>DATE</u>	<u>CREW</u>	<u>MONUMENT TYPE -----</u>
November 12, 2016	Zachariah P.Dechant Gary L. Dechant	Existing Harrison at Dove/Dragonfly intersection

References:

	<u>Bearing</u>	<u>Distance</u>
1) Set 3/4"x24" iron bar, down 6", 48' north of Dove Ave	N48E	67.50'
2) Set 3/4"x24" iron bar, down 8", 49' east of Dragonfly Road	S48E	67.11'
3) Set 3/4"x24" iron bar, flush, 1'NE of fence corner, 41' west of Dragonfly Rd	S48W	64.20'
4) Set 3/4"x24" iron bar, flush, 49' north of Dove Ave	N50W	77.38'



I, Harley A. Sime, do hereby certify that on the third day of June 1980, I found (evidence) (~~no evidence~~) of the Southeast corner of Section 3, T18 N, R 1 E Fourth Principal Meridian, and I re-established said corner according to the Wisconsin Statutes as shown and described hereon.

Dated this 26th day of Feb. 1981.

Harley A. Sime - R.L.S. 355

County Surveyor-Monroe County, Wisconsin  
Title

**History of corner establishment since Original Government Survey**  
Holden found the original corner in October of 1907. In his notes of his survey done during the 1930's, Kennedy shows the corner as being in the road centerline. Harley Sime shows an iron pipe at this corner in his notes of July, 1964. Duane Marten used this iron pipe in his survey of August, 1969. Zietlow used this corner in July of 1970. Bergman mentions an unrecorded stone at this corner in his survey of July, 1954. The old town road records show

Description of corner evidence found: this corner to be at the road intersection. Found a R.R. spike set over an iron pipe. This location had been used in previous survey work. Removed the spike and pipe and replaced them with a Harrison. The stone was not found. This location fits Bergman's notes extremely well.

**See Reverse Side  
For Maintenance**

COUNTY SURVEYOR FORM NO. 1

Description of corner and witness monuments, references and accessories used to perpetuate the original or re-established location of this corner:

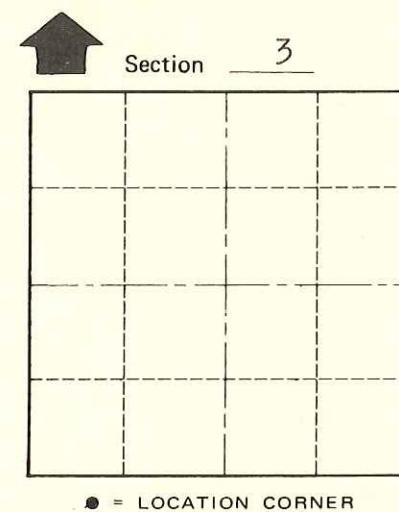
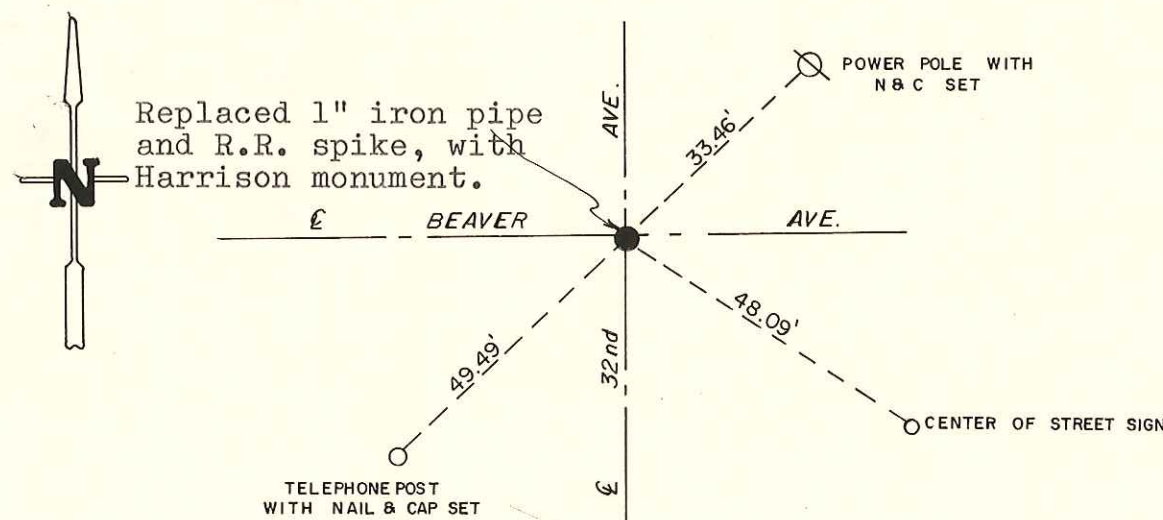
Witnesses to corner location:

Scott Sowers

Todd Tormoen

Chuck Dade

**Approved: HARLEY A. SIME  
MONROE CO. SURVEYOR**



T 18 N R 1 E

SURVEY CONTROL ORDER

Horizontal	_____
Vertical	_____

WISCONSIN COORDINATE SYSTEM

Corner	East (X)	North (Y)	Elevation (Z)	Zone
Control Sta. Name				

SIGN PLACED 12/22/86  
Kanwothy

WISCONSIN  
PLACED  
COUNTY SURVEYOR'S  
SIGN

~~City, Village or~~ Town of Byron Replaced 6-17-87  
County of Monroe  
Wisconsin