

CERTIFIED LAND CORNER

No. 19

Corner 41801022000

CERTIFICATE

I, Bryan H. Meyer, do hereby certify that on the 13th day of November, 20 02, I found (evidence) ~~(no evidence)~~ of the East 1/4 corner of Section 2, T 18 N, R 1E Fourth principle Meridian, and I re-established said corner according to the Wisconsin Statutes as shown and described hereon.

Dated this 21st day of February, 2008

Bryan H. Meyer
 Registered Land Surveyor
 Title

Description of corner and witness monuments, references and accessories used to perpetuate the original or re-established location of this corner.

Witnesses to corner location:

Bryan Meyer
Jerry Hibbard

History of corner establishment since Original Government Survey

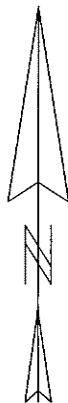
Fred Holden was here in October of 1907. Kennedy was here in the 1930s. This corner was reestablished by Harley Sime in July of 1980 went a 1 1/4" x 30" round iron bar was set for the corner. This corner location has been used by Bryan Meyer (October 1989 and October 1991); Larry Feddersen (August of 1993); James Carroll (June 1994); Doug Malliet (February 1995); Gary Dechant (April and November 2005).

UPDATE:

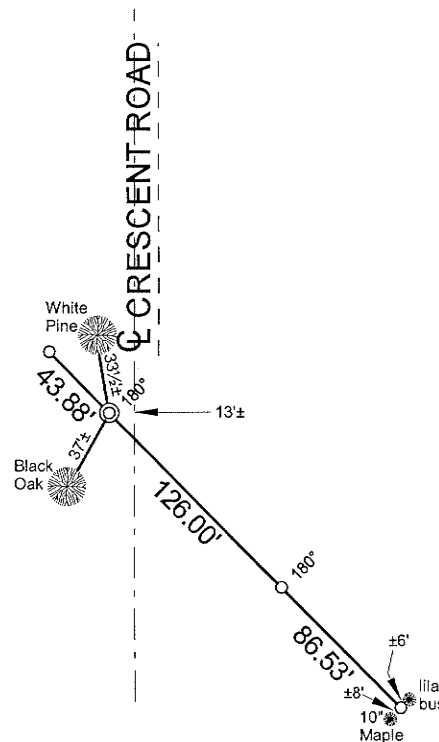
The County Surveyor's Office was notified by the Town of Byron that a road resurfacing project was to take place. This corner was referenced out. Following resurfacing, this corner was reset with a 1 1/4" x 30" hexagon iron bar with new ties shown along with two of the old (1980) ties.



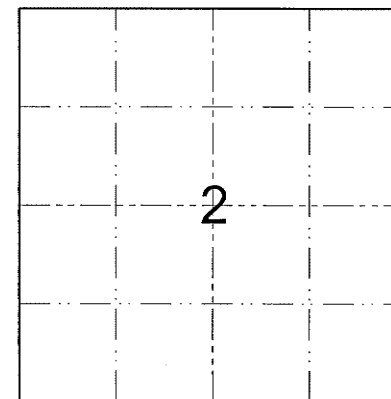
Bryan H. Meyer, Registered Land Surveyor
 H. A. Sime and Associates, P. O. Box 50
 Tomah, Wisconsin 54660 * 608-372-5392



⊙ = Set 1 1/4" x 30" hexagon iron bar
 ○ = Set 3/4" x 18" round iron bar



Section 2



O = Corner Location
 T 18 N R 1 E
 WISCONSIN

SURVEY CONTROL ORDER

Horizontal
Vertical

MONROE COUNTY COORDINATE SYSTEM

Corner	Northing	Easting	Elevation
41801022000			
Control Station Name			

City, Village or Town of Byron

County of Monroe