

# 23

**U.S. PUBLIC LAND CORNER  
MAINTENANCE**

**Corner ID : SE Sec. 2, T18N-R1E  
41801020000**

<u>FIELD DATE</u>	<u>CREW</u>	<u>MONUMENT TYPE</u> -----
September 21, 2017	Zachariah P. Dechant Gary L. Dechant	Existing Railroad spike. Removed, set 3/4"x24" round iron bar down 8", then reset railroad spike over bar. Witness iron bar to NW, 47.97'.

References:

	<u>Bearing</u>	<u>Distance</u>
1) Set 3/4" x 24" round iron bar, down 6", at intersection of power lines	N67E	90.55'
2) Set 3/4" x 24" round iron bar down 6", 2' south of power pole anchors	S26E	49.33'
3) Set 3/4" x 24" round iron bar, down 10" in field	S67W	107.53'
4) Set 3/4"x24" round iron bar, down 6"	N26W	77.50'

Corner and reference markers set on a straight lines.



I, William C. Jung, do hereby certify that on the twenty-first day of May 1980, I found (evidence) (~~was~~) of the Southeast corner of Section 2, T 18 N, R 1 E Fourth Principal Meridian, and I re-established said corner according to the Wisconsin Statutes as shown and described hereon.

Dated this 25th day of Feb. 1981.

William C. Jung

William C. Jung - R.L.S. 1323  
Title

**History of corner establishment since Original Government Survey**  
Holden reestablished this corner in October of 1907. In his notes of the 1930's, Kennedy shows the corner as being in the road intersection. Zietlow set an iron bar at the road intersection in July of 1970. Malliet used this bar in his survey of April, 1977.

**Description of corner evidence found:**

Found a 3/4" iron bar used in previous survey work, removed it and replaced it with a Harrison marker. This is the same location as shown on the Dairyland Power line R/W maps. The old town road records also show the corner as being at this location. After surveying out neighboring sections, field evidence and measurements also support this corner location.

**See Reverse Side For Maintenance**

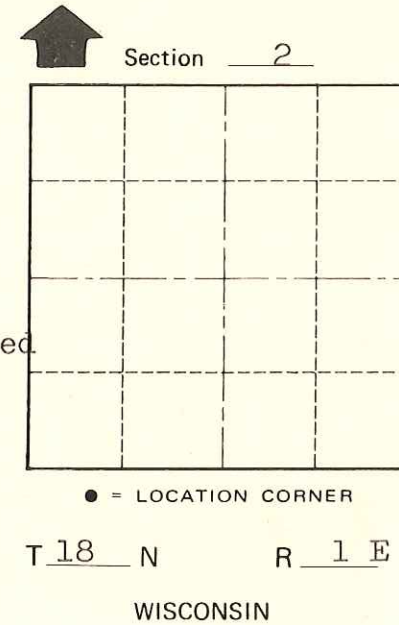
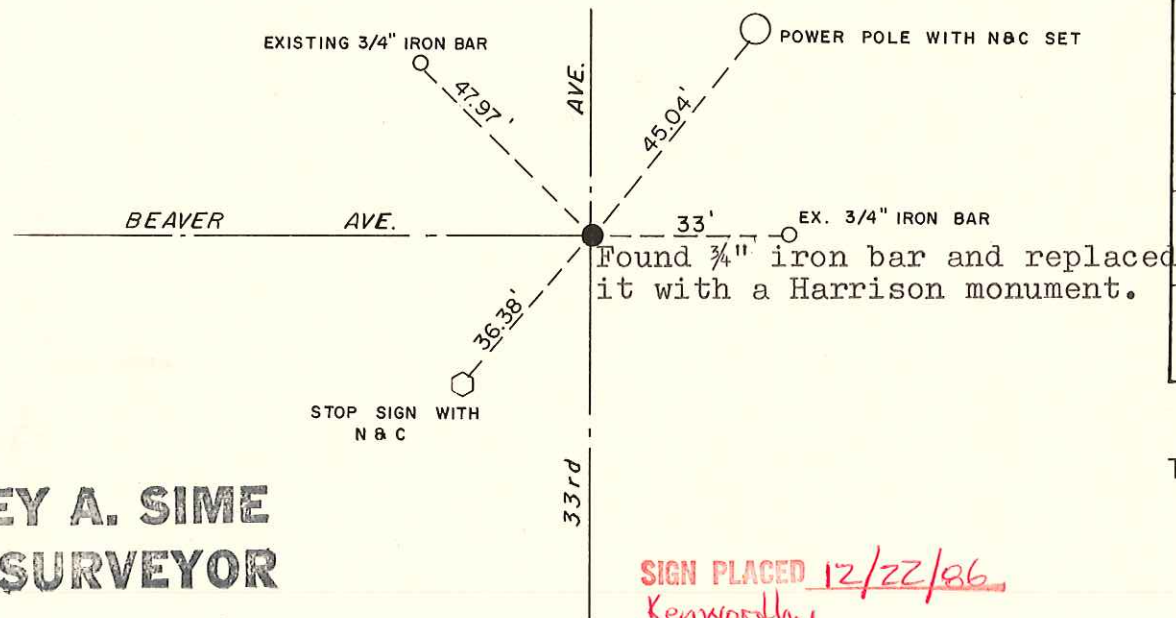
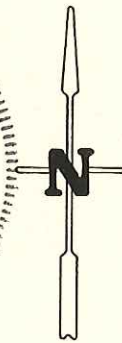
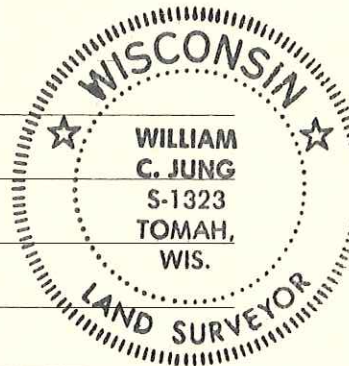
Description of corner and witness monuments, references and accessories used to perpetuate the original or re-established location of this corner:

Witnesses to corner location:

William C. Jung

Malcom S. Sowers

Charles D. Dade



**Approved: HARLEY A. SIME  
MONROE CO. SURVEYOR**

**SURVEY CONTROL ORDER**

Horizontal	_____
Vertical	_____

**WISCONSIN COORDINATE SYSTEM**

Corner	East (X)	North (Y)	Elevation (Z)	Zone
Control Sta. Name				

**SIGN PLACED 12/22/86  
Kenwoodby**

~~City, Village or~~ Town of Byron  
County of Monroe  
Wisconsin

COUNTY SURVEYOR FORM NO. 1