

JUNEAU COUNTY SURVEY MONUMENT RECORD

CORNER NO. 14
SECTION 6
TOWN 18 N.
RANGE 2 E.

TYPE OF MONUMENT: 1-1/4" DIAMETER IRON ROD WITNESS MONUMENT FOUND

JUNEAU COUNTY COORDINATES NAD 83/91

WITNESS: NORTHING: 253,264.64
 EASTING: 400,807.24

CORNER: NORTHING: 253,264.20
 EASTING: 400,850.10

■ = CORNER MONUMENT RESTORED

BASIS FOR MONUMENT LOCATION
(USE REVERSE SIDE IF NECESSARY)

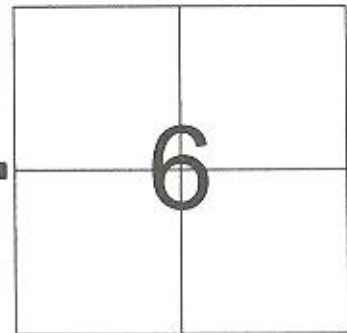
SHOW INFO SUCH AS: HISTORY OF CORNER, WITH REFERENCE TO VOLUME AND PAGE DATES, SURVEYOR; EXACT DESCRIPTION OF MONUMENT PLACED OR FOUND, IF LOCATION COMPUTED, BY TAPED OR EDM TRAVERSE; LANDOWNER REMARKS, ETC.

1-1/4" DIAMETER IRON ROD WITNESS MONUMENT FOUND
AS PER TIE SHEET DATED 2/23/1983 BY WILLIAM JUNG.

LEGEND

- = 1-1/4" DIAMETER IRON ROD WITNESS MONUMENT FOUND
- λ = GOVERNMENT SIGN SET
- = 1-1/4" DIAMETER IRON ROD FOUND
- = 3/4" X 24" IRON ROD SET
- = TRUE CORNER LOCATION - NO MONUMENT

TIE SKETCH
(SHOW AT LEAST FOUR TIES)



LOCATION



CERTIFIED CORRECT

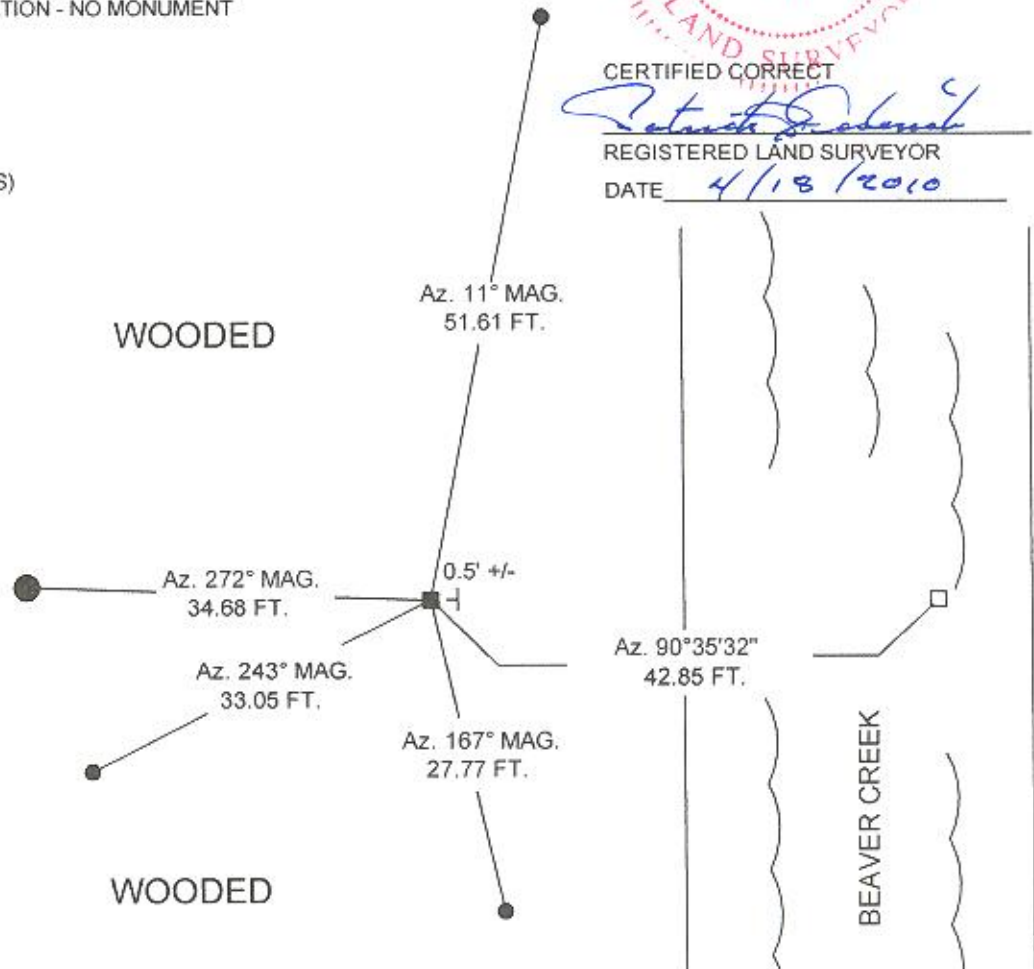
Patrick J. Dederich
REGISTERED LAND SURVEYOR

DATE 4/18/2010

NOT TO SCALE



AZIMUTHS ARE BASED
ON THE JUNEAU COUNTY
COORDINATE SYSTEM
UNLESS OTHERWISE NOTED



41801012000

I, William C. Jung, do hereby certify that on the 3rd day of June 1982, I found ~~(no evidence)~~ (no evidence) of the East 1/4 corner of Section 1, T18 N, R 1 E Fourth Principal Meridian, and I re-established said corner according to the Wisconsin Statutes as shown and described hereon.

Dated this 22nd day of Feb. 1983.

William C. Jung
Deputy County Surveyor
Title

History of corner establishment since Original Government Survey

Kennedy's notes of May 19, 1937, state that he set a witness pipe in a mound West of the ditch and that the true corner fell in the ditch.

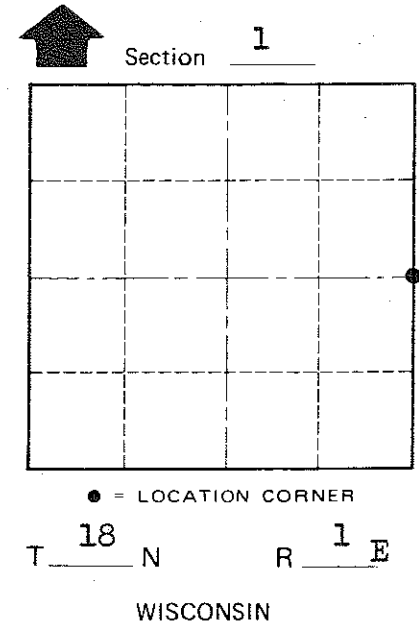
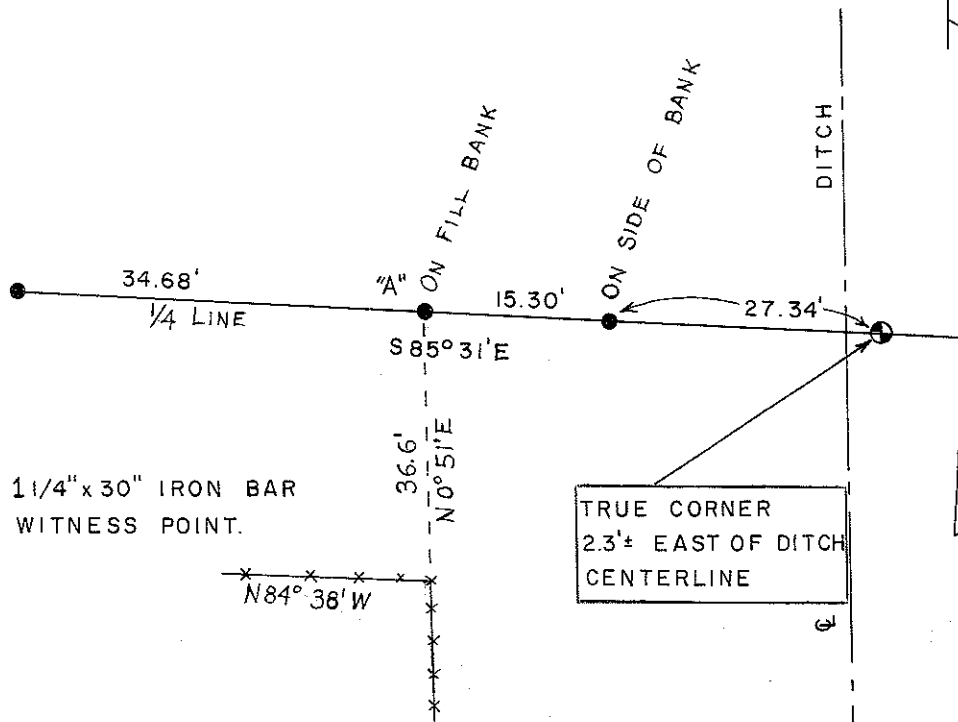
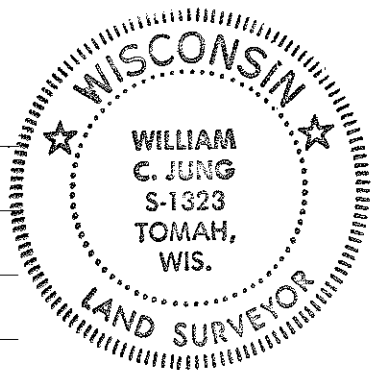
Description of corner evidence found:

I could not find Kennedy's pipe. I set the corner by single proportionate measurement between the NE and SE corners of Section 1. The corner falls in the ditch and is S85°31'E, 42.64 feet from the iron bar at "A".

Description of corner and witness monuments, references and accessories used to perpetuate the original or re-established location of this corner:

Witnesses to corner location:

William Jung
Bryan Meyer



Approved: **HARLEY A. SIMÉ**
MONROE CO. SURVEYOR

SURVEY CONTROL ORDER

Horizontal	_____
Vertical	_____

WISCONSIN COORDINATE SYSTEM

Corner	East (X)	North (Y)	Elevation (Z)	Zone
Control Sta. Name				

TRUE CORNER
2.3± EAST OF DITCH
CENTERLINE

Byron
County of Monroe

PLACED
COUNTY SURVEYOR'S
SIGN 6-22-87

COUNTY SURVEYOR FORM NO. 1