

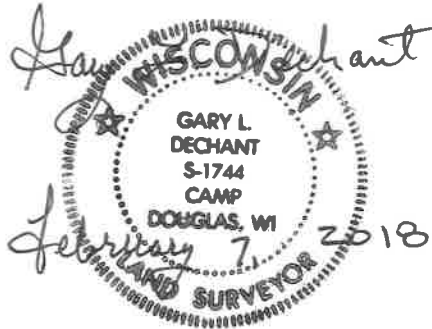
22

U.S. PUBLIC LAND CORNER MAINTENANCE

Corner ID : S1/4 Sec. 1, T18N-R1E
41801010020

| <u>DATE</u> | <u>CREW</u> | <u>MONUMENT TYPE</u> ----- |
|------------------|-------------------------------------|---|
| February 7, 2018 | Zachariah P.Dechant Gary Dechant | Existing 2-3/8" iron pipe, 34' south of power line. Set survey sign 1' north. In marsh, Approx. 250' north of higher ground |

| <u>References:</u> | <u>Bearing</u> | <u>Distance</u> |
|--|----------------|-----------------|
| 1) Set 3/4"x24" round iron bar, 4' NW of 14" White Pine (BT) | S80E | 34.71' |
| 2) Set 3/4"x24" round iron bar, 4' NE of 12" White Pine | S44E | 51.70' |
| 3) Set 3/4"x24" round iron bar, 4' NE of 10" White Pine | S80W | 23.95' |
| 4) Set 3/4"x24" round iron bar, center of east-west trail | N2W | 41.02' |



41801010020

I, William C. Jung, do hereby certify that on the fifth day of May 1982, I found (no evidence) ~~no evidence~~ of the South $\frac{1}{4}$ corner of Section 1, T 18 N, R 1 E Fourth Principal Meridian, and I re-established said corner according to the Wisconsin Statutes as shown and described hereon.

Dated this seventh day of May 1982.

William C. Jung
Deputy County Surveyor

Title

History of corner establishment since Original Government Survey

In September of 1970, Fred Zietlow surveyed out Section 12-T18N-R1E and computed the location of this corner.

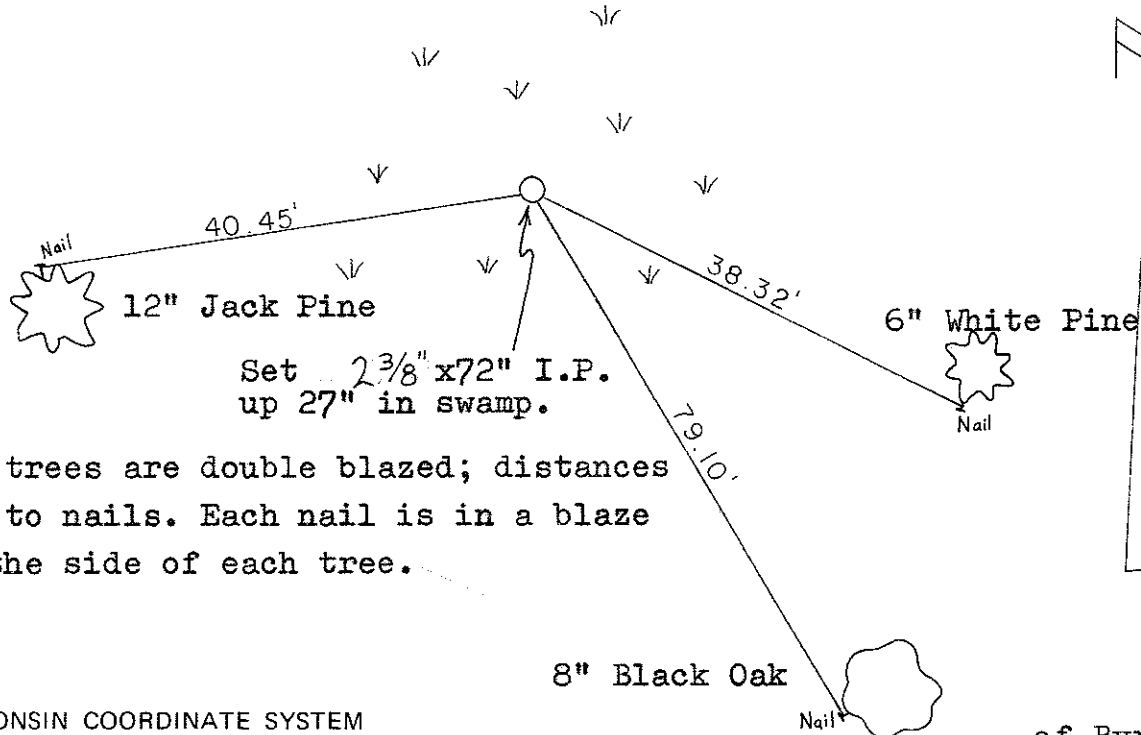
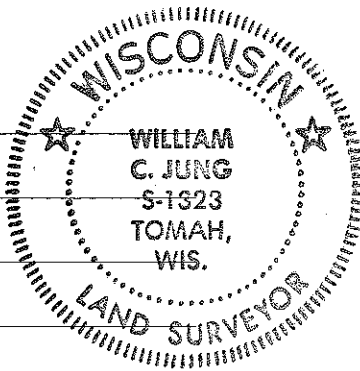
Description of corner evidence found:

After retracing Zietlow's survey and checking the existing field evidence and monuments in Section 12, I set the corner at Zietlow's computed location.

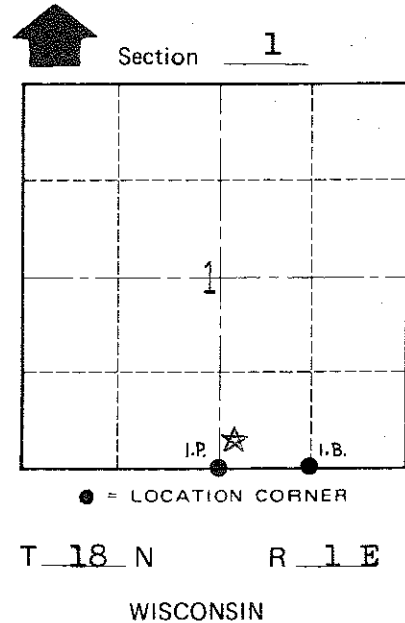
Description of corner and witness monuments, references and accessories used to perpetuate the original or re-established location of this corner:

Witnesses to corner location:

William Jung
Gary Dechant



All trees are double blazed; distances are to nails. Each nail is in a blaze on the side of each tree.



Approved: **HARLEY A. SIMÉ**
MONROE CO. SURVEYOR

SURVEY CONTROL ORDER

| | |
|------------|-------|
| Horizontal | _____ |
| Vertical | _____ |

WISCONSIN COORDINATE SYSTEM

| Corner | East (X) | North (Y) | Elevation (Z) | Zone |
|-------------------|----------|-----------|---------------|------|
| Control Sta. Name | | | | |

City, Village or Town of Byron
County of Monroe

COUNTY SURVEYOR FORM NO. 1