

# JUNEAU COUNTY SURVEY MONUMENT RECORD

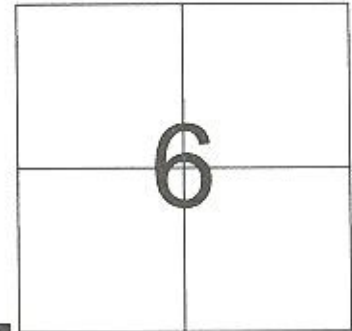
CORNER NO. 21  
SECTION 6  
TOWN 18 N.  
RANGE 2 E.

TYPE OF MONUMENT: 1-1/4" DIAMETER IRON ROD WITNESS MONUMENT FOUND

JUNEAU COUNTY COORDINATES NAD 83/91

WITNESS:    NORTHING: 250,628.12  
                  EASTING: 400,779.00

CORNER:    NORTHING: 250,627.47  
                  EASTING: 400,830.77



LOCATION

■ = CORNER MONUMENT RESTORED

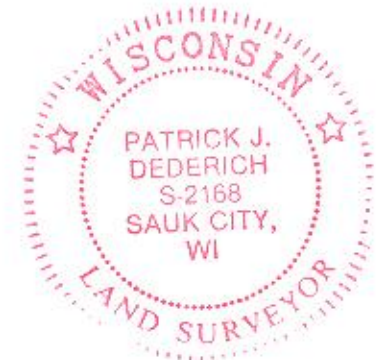
BASIS FOR MONUMENT LOCATION  
(USE REVERSE SIDE IF NECESSARY)

SHOW INFO SUCH AS: HISTORY OF CORNER, WITH REFERENCE TO VOLUME AND PAGE DATES, SURVEYOR; EXACT DESCRIPTION OF MONUMENT PLACED OR FOUND, IF LOCATION COMPUTED, BY TAPED OR EDM TRAVERSE; LANDOWNER REMARKS, ETC.

1-1/4" DIAMETER IRON ROD WITNESS MONUMENT FOUND  
AS PER TIE SHEET DATED 2/22/1983 BY WILLIAM JUNG.

## LEGEND

- = 1-1/4" DIAMETER IRON ROD WITNESS MONUMENT FOUND
- λ = GOVERNMENT SIGN SET
- = 1-1/4" DIAMETER IRON ROD FOUND
- = 3/4" X 24" IRON ROD SET
- = 3/4" DIAMETER IRON ROD FOUND
- = TRUE CORNER LOCATION - NO MONUMENT



CERTIFIED CORRECT

*Patrick J. Dederich*  
REGISTERED LAND SURVEYOR

DATE 4/18/2010

TIE SKETCH  
(SHOW AT LEAST FOUR TIES)

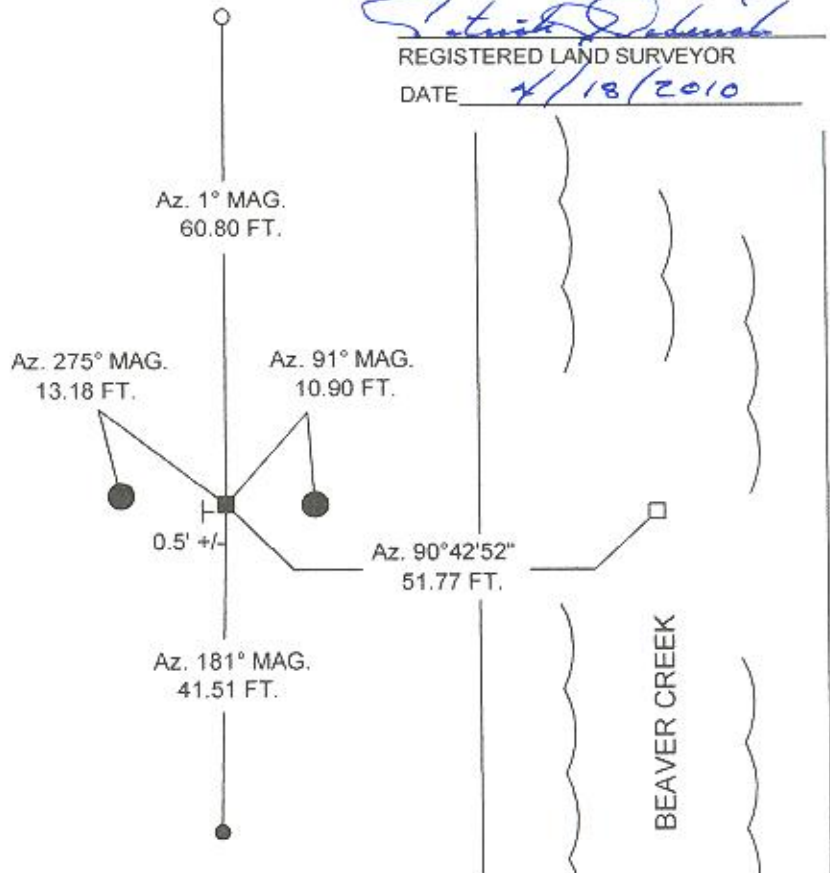
WOODED

WOODED

NOT TO SCALE



AZIMUTHS ARE BASED  
ON THE JUNEAU COUNTY  
COORDINATE SYSTEM  
UNLESS OTHERWISE NOTED



BEAVER CREEK

41801010000

I, William C. Jung 14th, do hereby certify that on the 14th day of May 1982, I found ~~(evidence)~~ (no evidence) of the SE corner of Section 1, T 18 N, R 1 E Fourth Principal Meridian, and I re-established said corner according to the Wisconsin Statutes as shown and described hereon.

Dated this 22nd day of Feb. 1983

William C. Jung  
Deputy County Surveyor

Title

History of corner establishment since Original Government Survey

In September of 1970, Fred Zietlow surveyed out Section 12-T18N-R1E and computed the location of this corner.

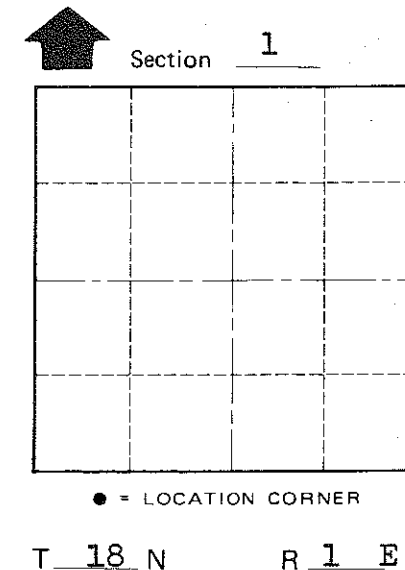
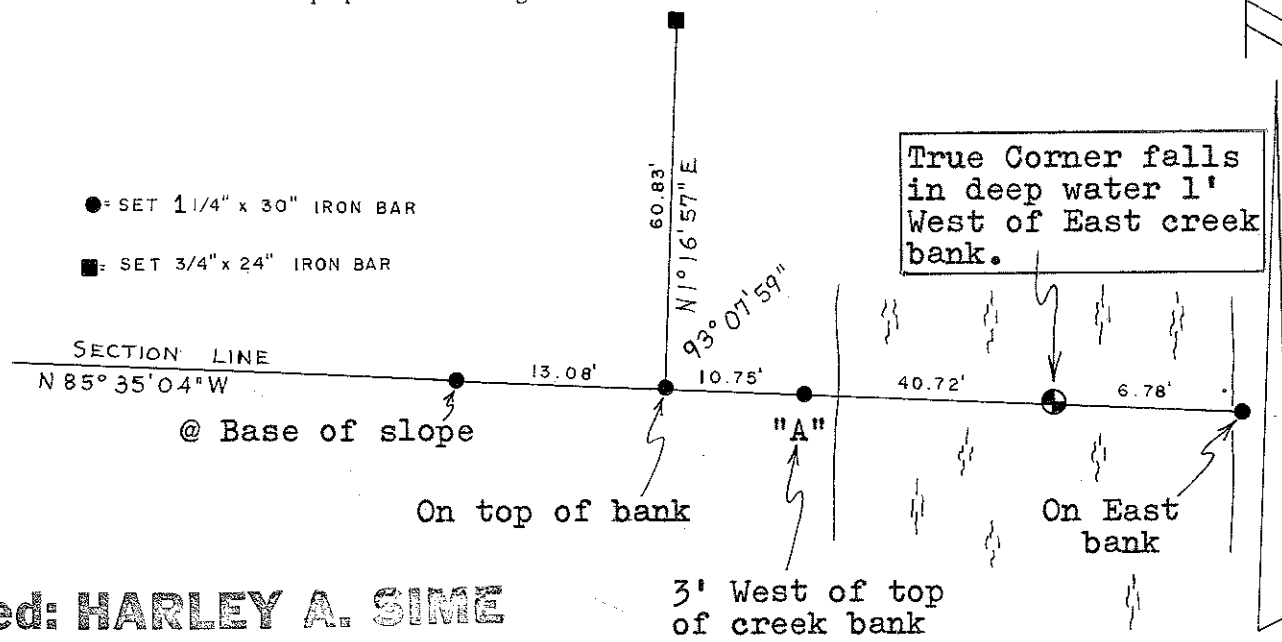
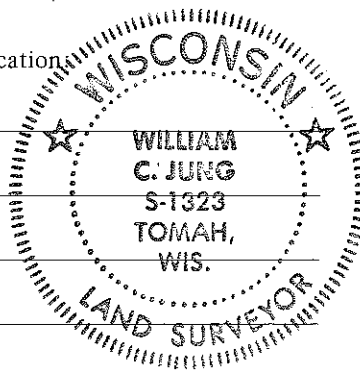
Description of corner evidence found:

After retracing Zietlow's survey and checking the existing field evidence and monuments in Section 12, I set the corner at Zietlow's computed location. The actual corner could not physically be set, so I set a series of witness markers as shown below.

Description of corner and witness monuments, references and accessories used to perpetuate the original or re-established location of this corner:

Witnesses to corner location:

William Jung  
Gary Dechant  
Bryan Meyer



Approved: **HARLEY A. SIME**  
**MONROE CO. SURVEYOR**

SURVEY CONTROL ORDER

Horizontal	_____
Vertical	_____

WISCONSIN COORDINATE SYSTEM

Corner	East (X)	North (Y)	Elevation (Z)	Zone
Control Sta. Name				

Byron  
County of Monroe

PLACED  
COUNTY SURVEYOR'S  
6-22-87 SIGN

COUNTY SURVEYOR FORM NO. 1