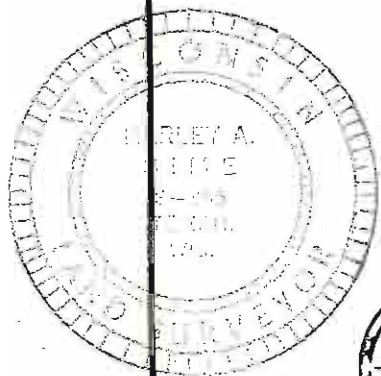
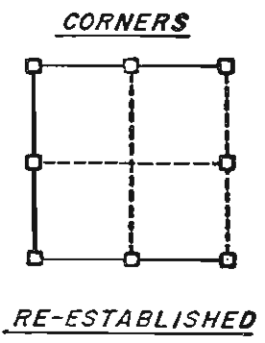
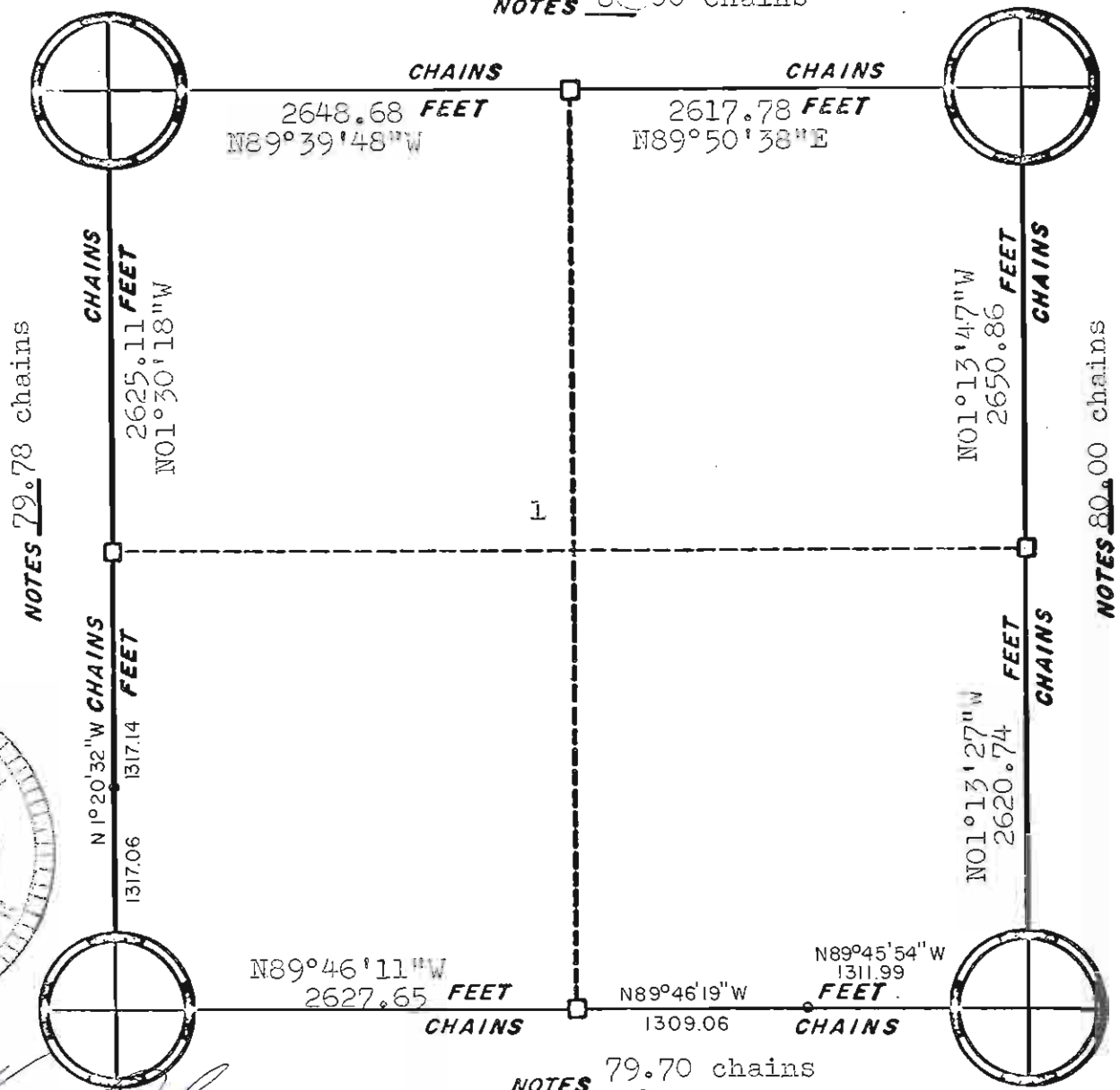


NOTES 80.00 chains

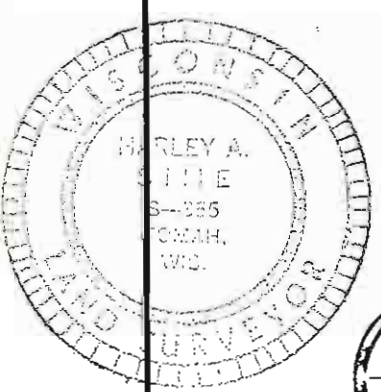
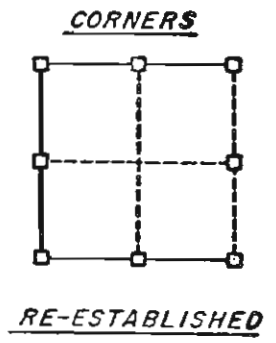
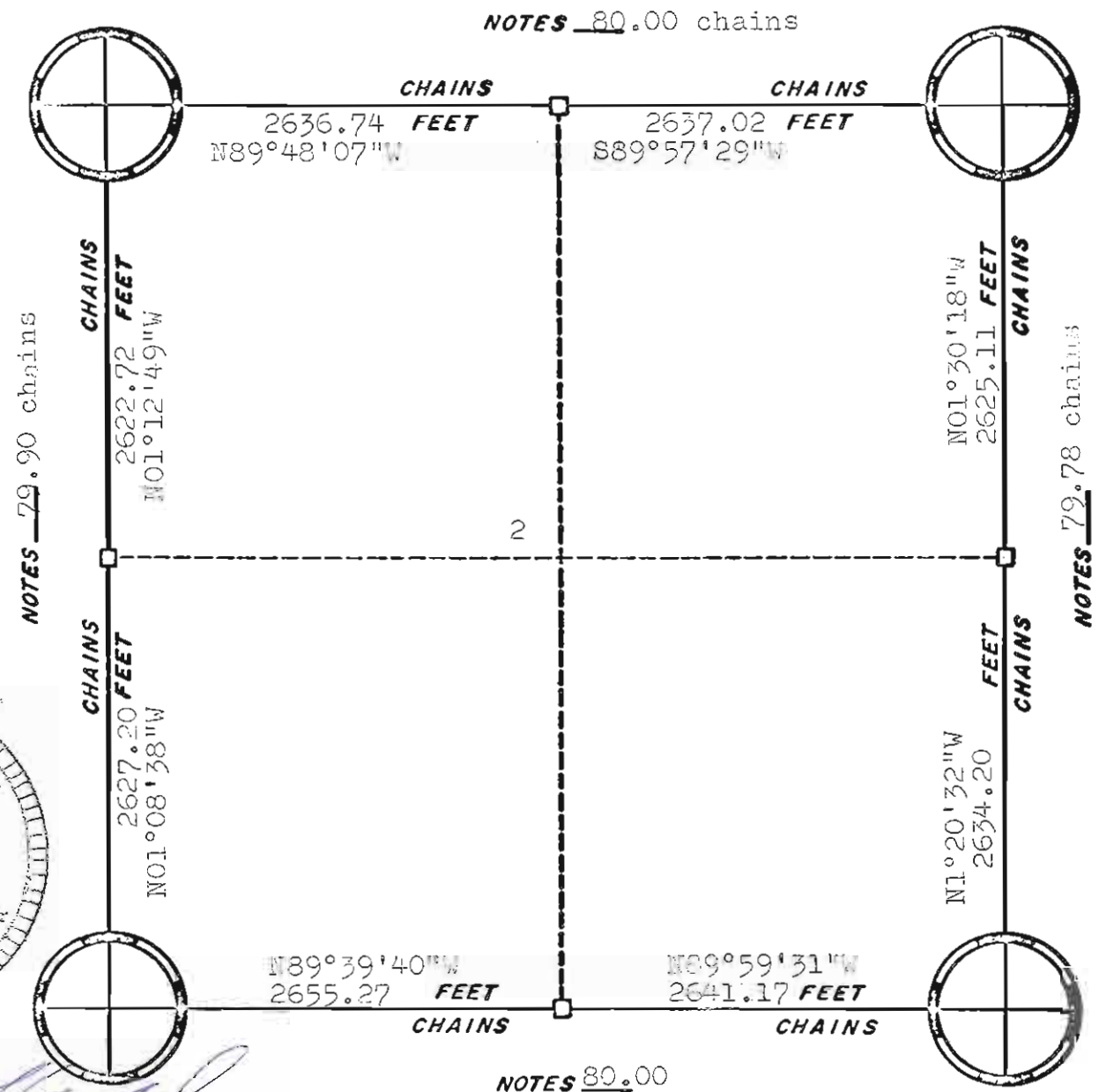


Harley A. Sime
 Harley A. Sime
 Monroe County Surveyor

ORIGINAL SURVEY DATA

BY _____
 DATE 1/26/76

SURVEYED BY <u>W.C. Jung</u>	CONTRACT DATE 1975-1976	COUNTY <u>MONROE</u>	TOWN-VILLAGE-CITY Sparta	SECTION 1	TOWNSHIP T17N	RANGE R4W
------------------------------	----------------------------	----------------------	-----------------------------	--------------	------------------	--------------



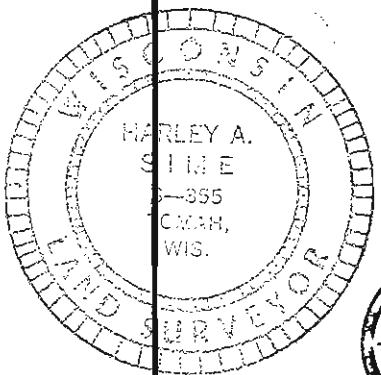
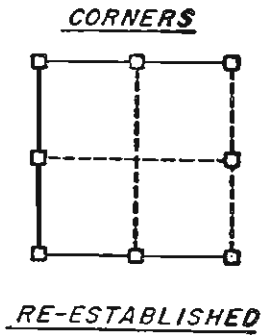
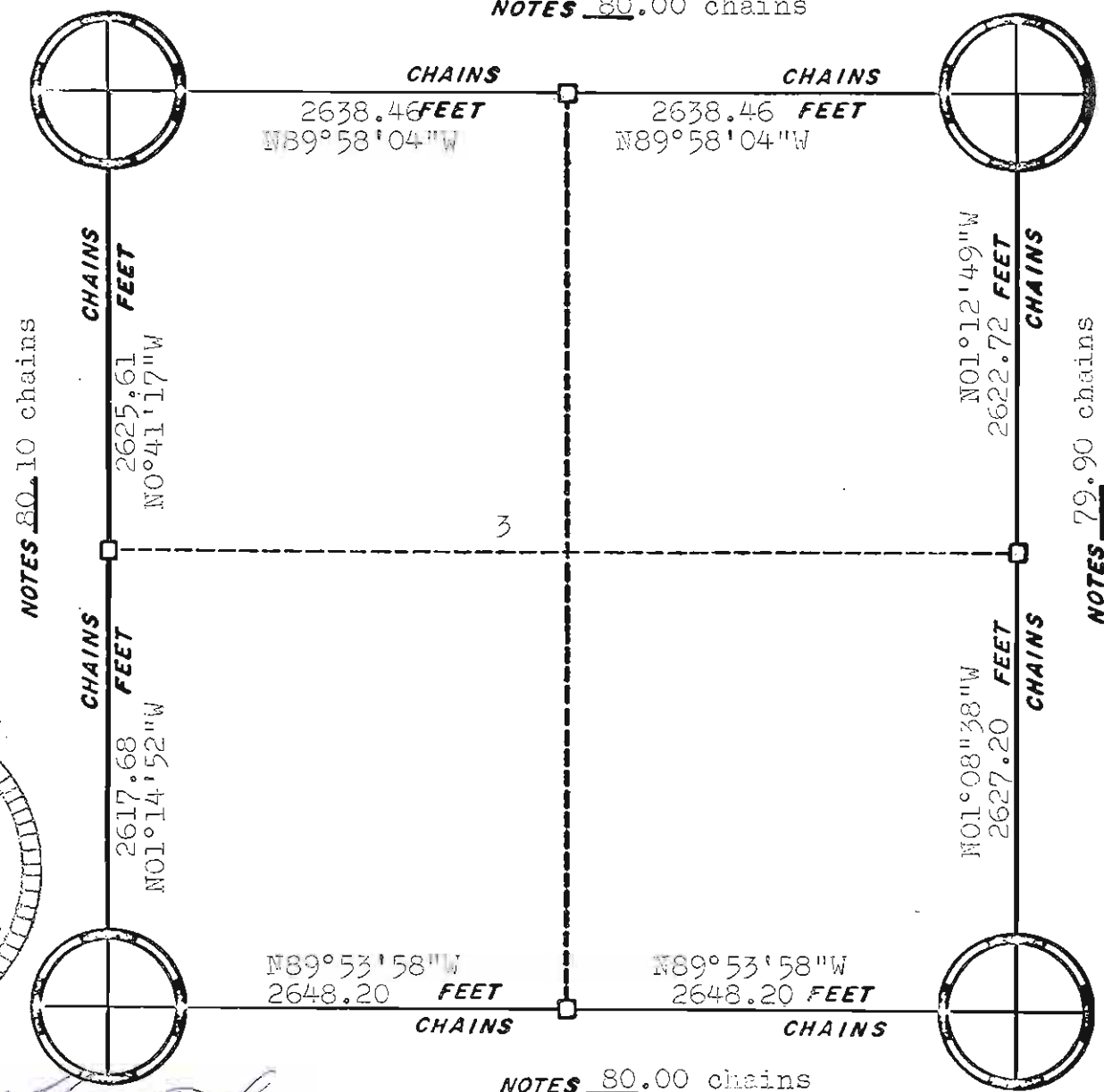
Harley A. Sime
Harley A. Sime
Monroe County Surveyor

ORIGINAL SURVEY DATA

BY _____
DATE 1/26/76

SURVEYED BY W.C. Jung	CONTRACT DATE 1975 - 1976	COUNTY MONROE	TOWN-VILLAGE-CITY Spart	SECTION 2	TOWNSHIP T17N	RANGE R4W
--------------------------	------------------------------	------------------	----------------------------	--------------	------------------	--------------

NOTES 80.00 chains



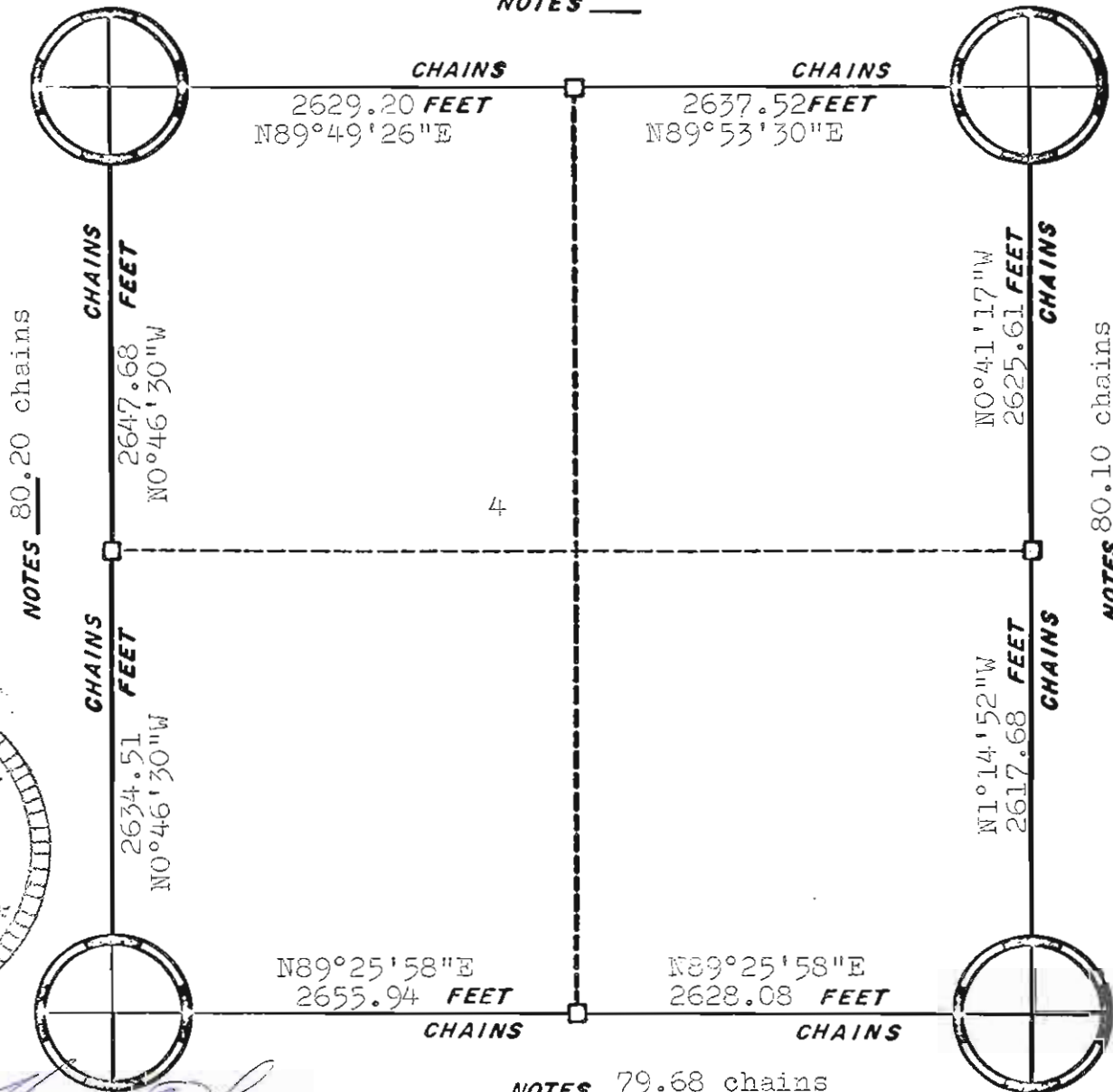
Harley A. Sime
 Harley A. Sime
 Monroe County Surveyor

ORIGINAL SURVEY DATA

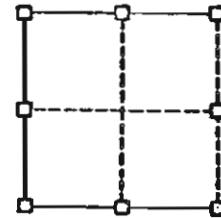
BY _____
 DATE 1/26/76

SURVEYED BY W.C. June	CONTRACT DATE 1975 - 1976	COUNTY MONROE	TOWN-VILLAGE-CITY Sparta	SECTION 3	TOWNSHIP T17N	RANGE R4W
--------------------------	------------------------------	------------------	-----------------------------	--------------	------------------	--------------

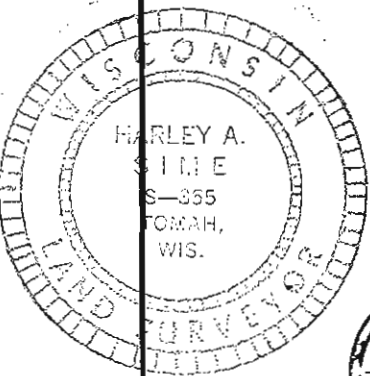
NOTES 80.00 chains



CORNERS



RE-ESTABLISHED



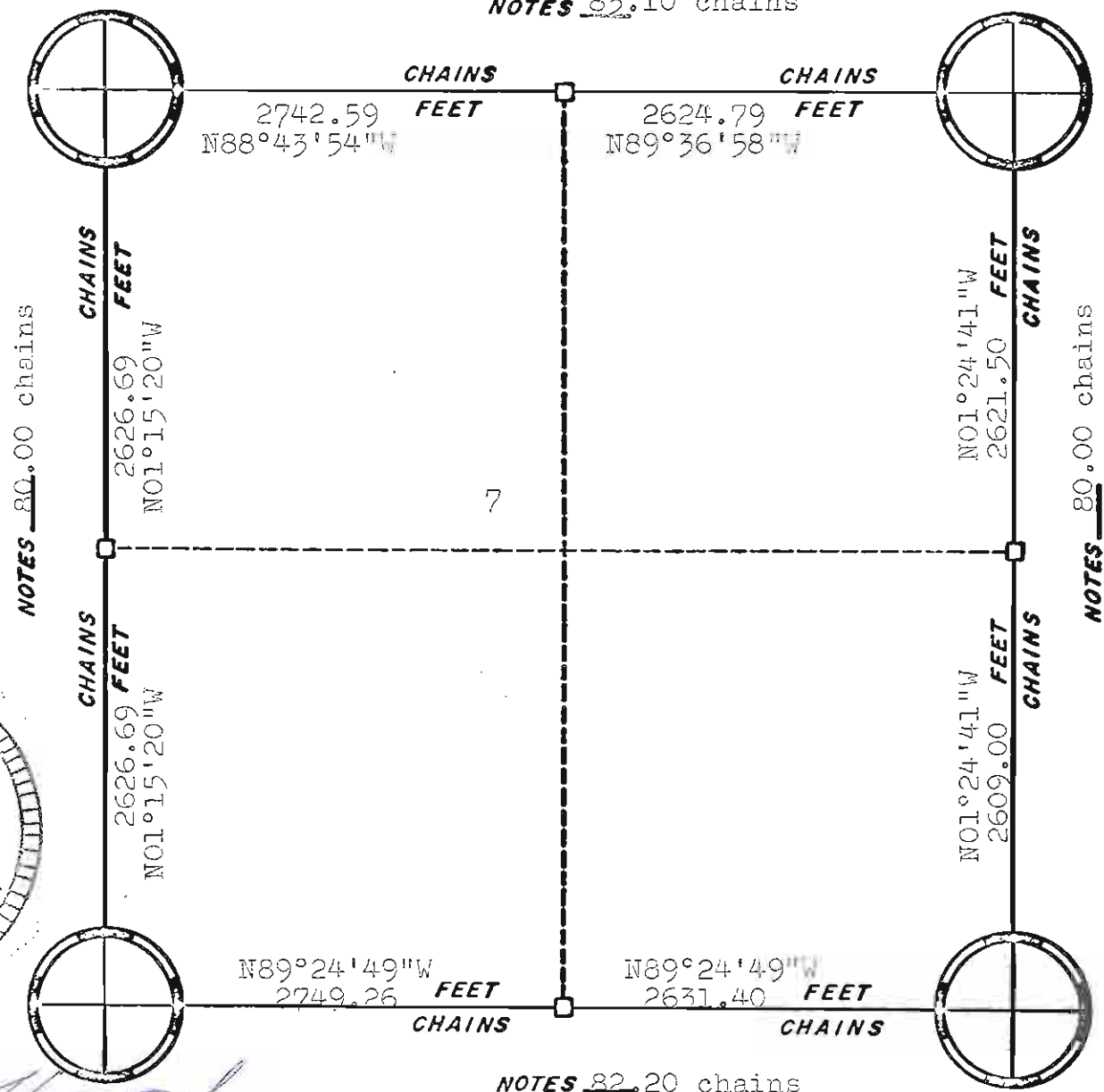
Harley A. Sime
 Harley A. Sime
 Monroe County Surveyor

ORIGINAL SURVEY DATA

BY _____
 DATE 1/26/76

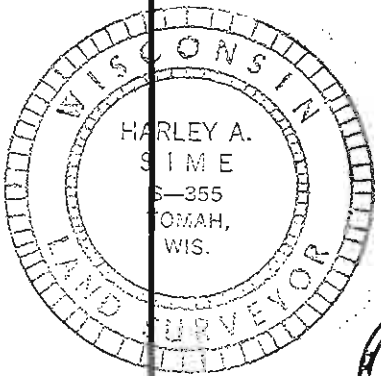
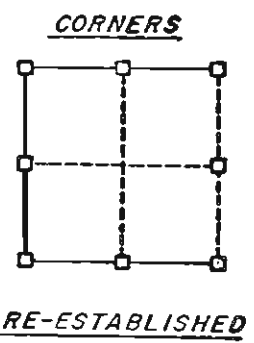
SURVEYED BY <u>W.C. Jung</u>	CONTRACT DATE <u>1975 - 1976</u>	COUNTY <u>MONROE</u>	TOWN-VILLAGE-CITY <u>Sparta</u>	SECTION <u>4</u>	TOWNSHIP <u>T17N</u>	RANGE <u>R4W</u>
------------------------------	----------------------------------	----------------------	---------------------------------	------------------	----------------------	------------------

NOTES 83.10 chains



NOTES 80.00 chains

NOTES 80.00 chains



Harley A. Sime
 Harley A. Sime
 Monroe County Surveyor

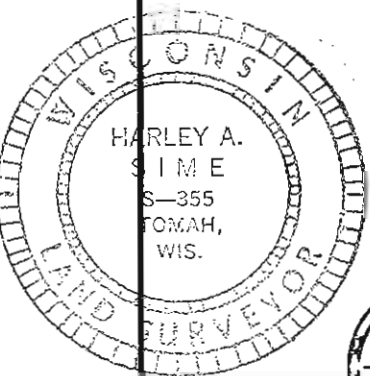
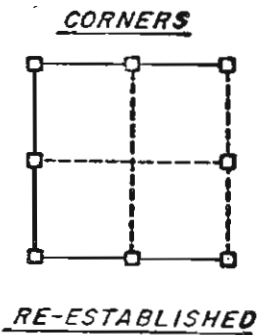
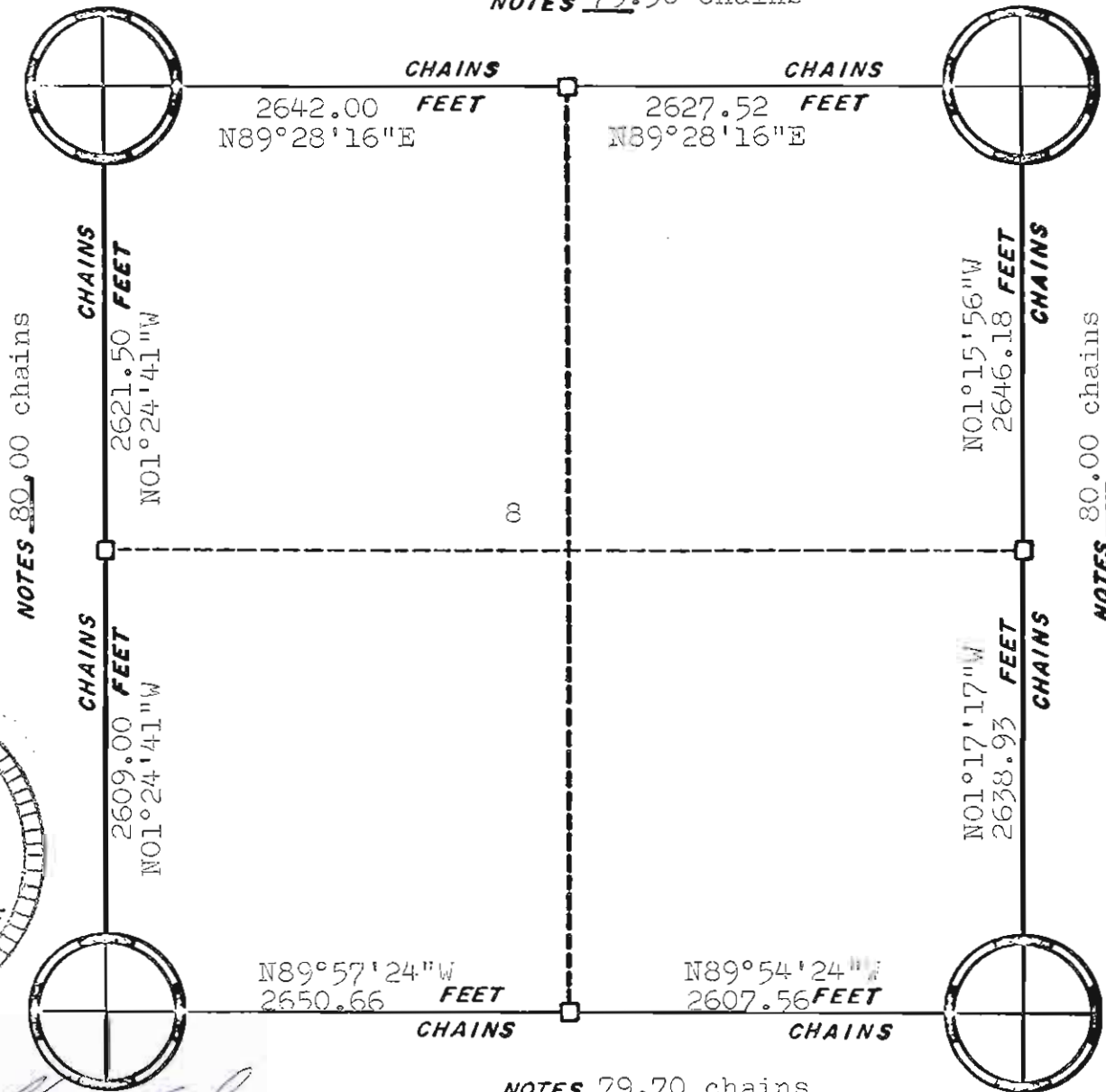
NOTES 82.20 chains

ORIGINAL SURVEY DATA

BY _____
 DATE 1/26/76

SURVEYED BY <i>W.C. Jung</i>	CONTRACT DATE 1975 - 1976	COUNTY MONROE	TOWN-VILLAGE-CITY Sparta	SECTION 7	TOWNSHIP T17N	RANGE R4W
------------------------------	------------------------------	---------------	-----------------------------	--------------	------------------	--------------

NOTES 79.30 chains



Harley A. Sime

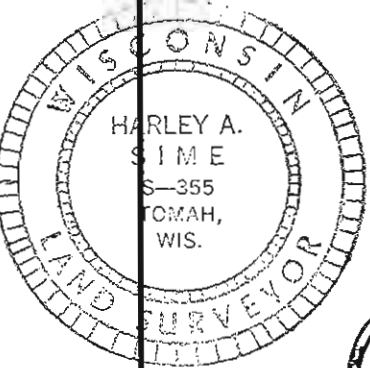
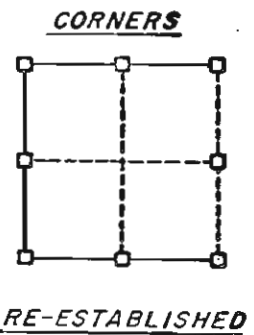
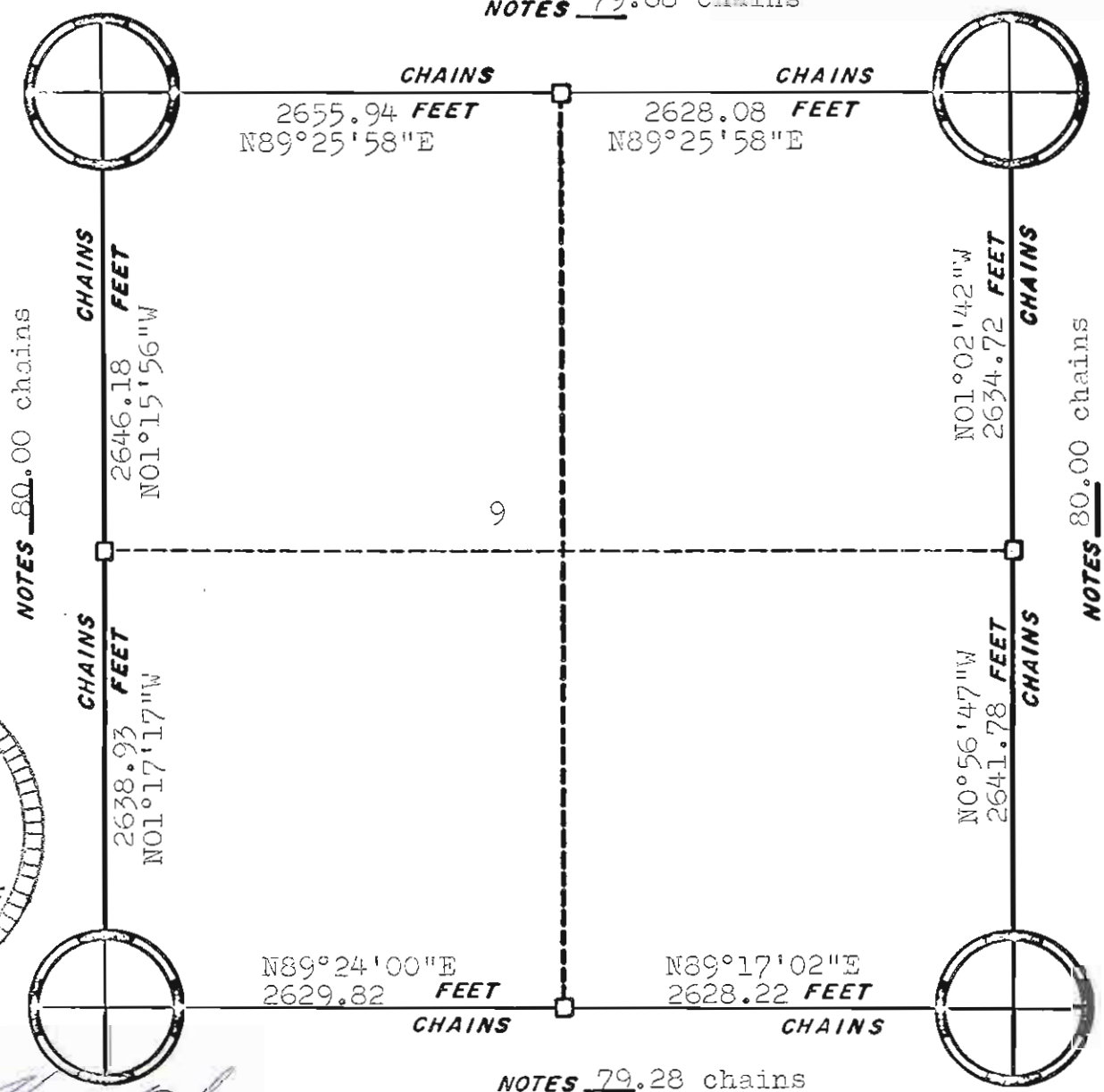
 Harley A. Sime
 Monroe County Surveyor

ORIGINAL SURVEY DATA

BY _____
 DATE 1/26/76

SURVEYED BY	CONTRACT DATE	COUNTY	TOWN-VILLAGE-CITY	SECTION	TOWNSHIP	RANGE
W.C. Jung	1975 - 1976	MONROE	Sparta	8	T17N	R4W

NOTES 79.68 chains



Harley A. Sime

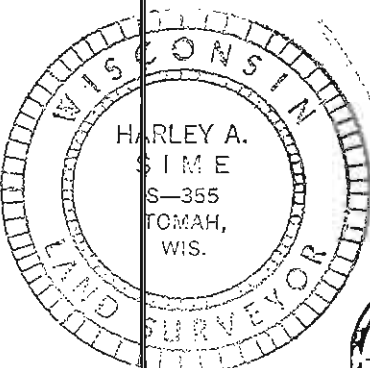
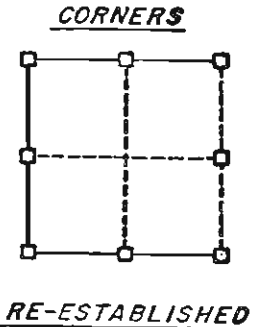
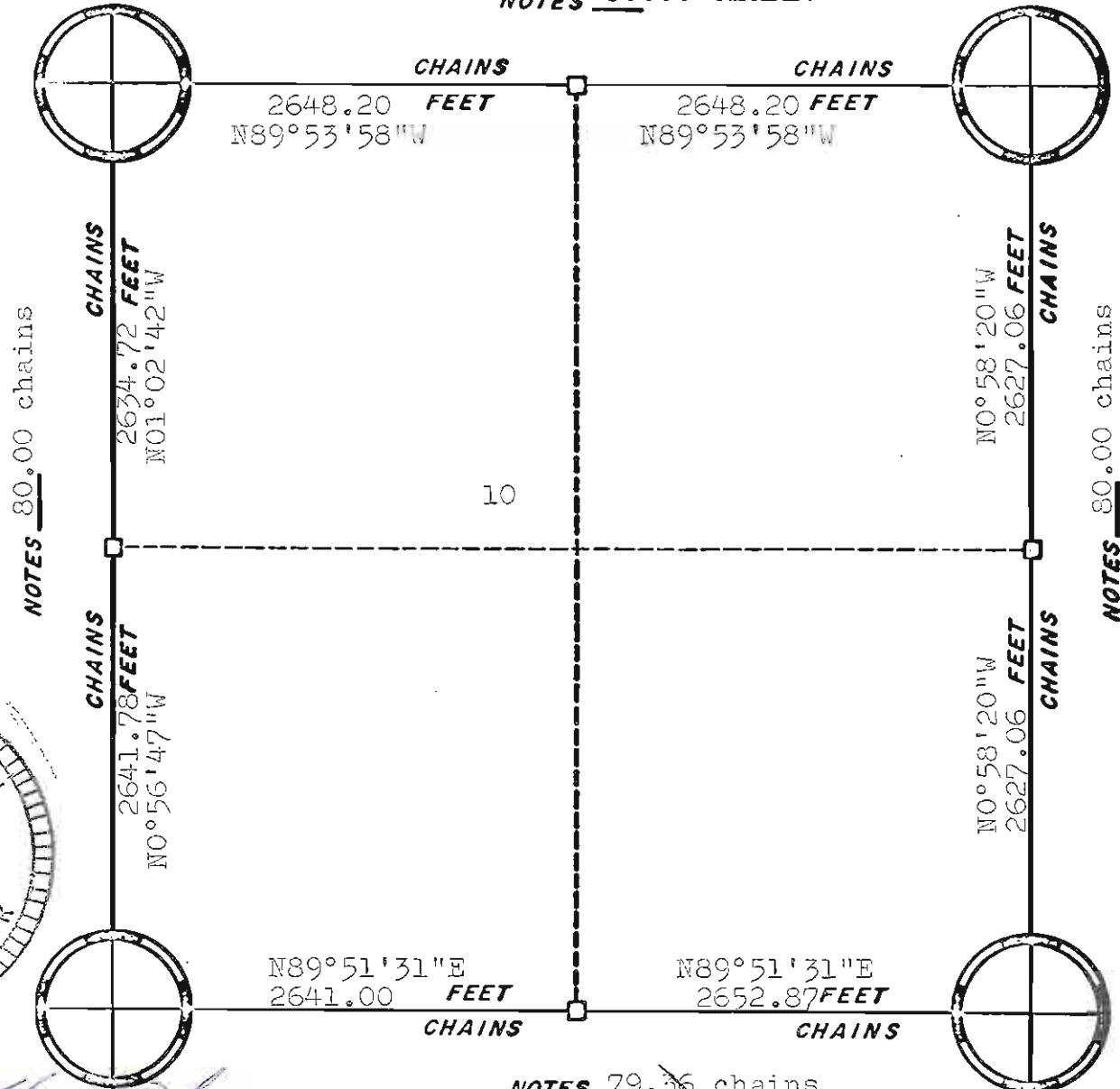
Harley A. Sime
Monroe County Surveyor

ORIGINAL SURVEY DATA

BY _____
DATE 1/26/76

SURVEYED BY	CONTRACT DATE	COUNTY	MONROE	TOWN-VILLAGE-CITY	SECTION	TOWNSHIP	RANGE
W.C. Jung <i>W.C.J.</i>	1975 - 1976			Sparta	9	T17N	R4W

NOTES 80.00 chains



Harley A. Sime

Harley A. Sime
Monroe County Surveyor

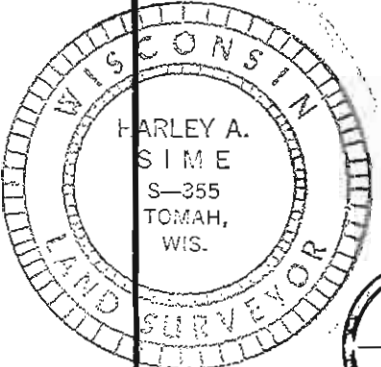
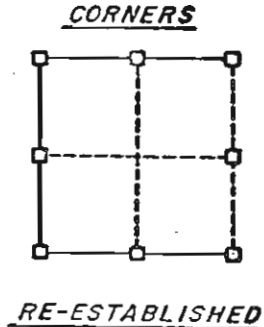
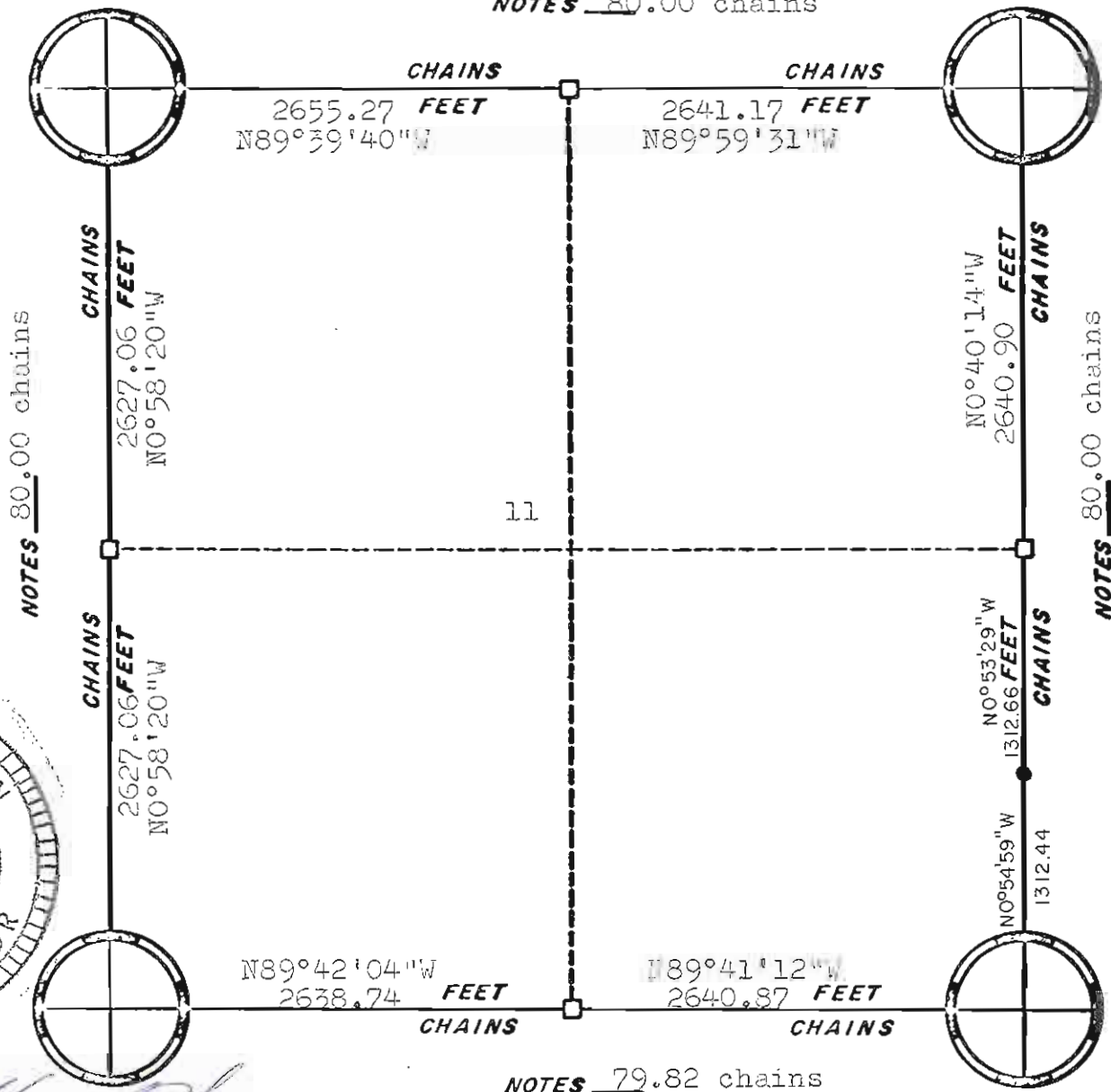
NOTES 79.36 chains

ORIGINAL SURVEY DATA

BY _____
DATE 1/26/78

SURVEYED BY <u>W.C. Jung</u>	CONTRACT DATE 1975 - 1976	COUNTY <u>MONROE</u>	TOWN-VILLAGE-CITY <u>Sparta</u>	SECTION 10	TOWNSHIP T17N	RANGE R4W
------------------------------	------------------------------	----------------------	------------------------------------	---------------	------------------	--------------

NOTES 80.00 chains



Harley A. Sime

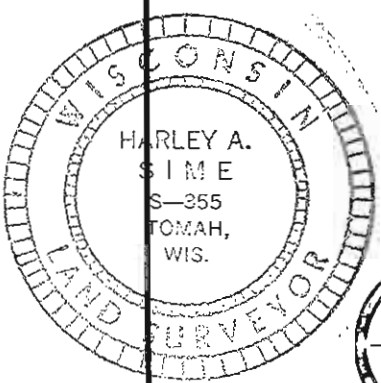
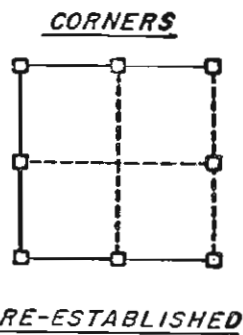
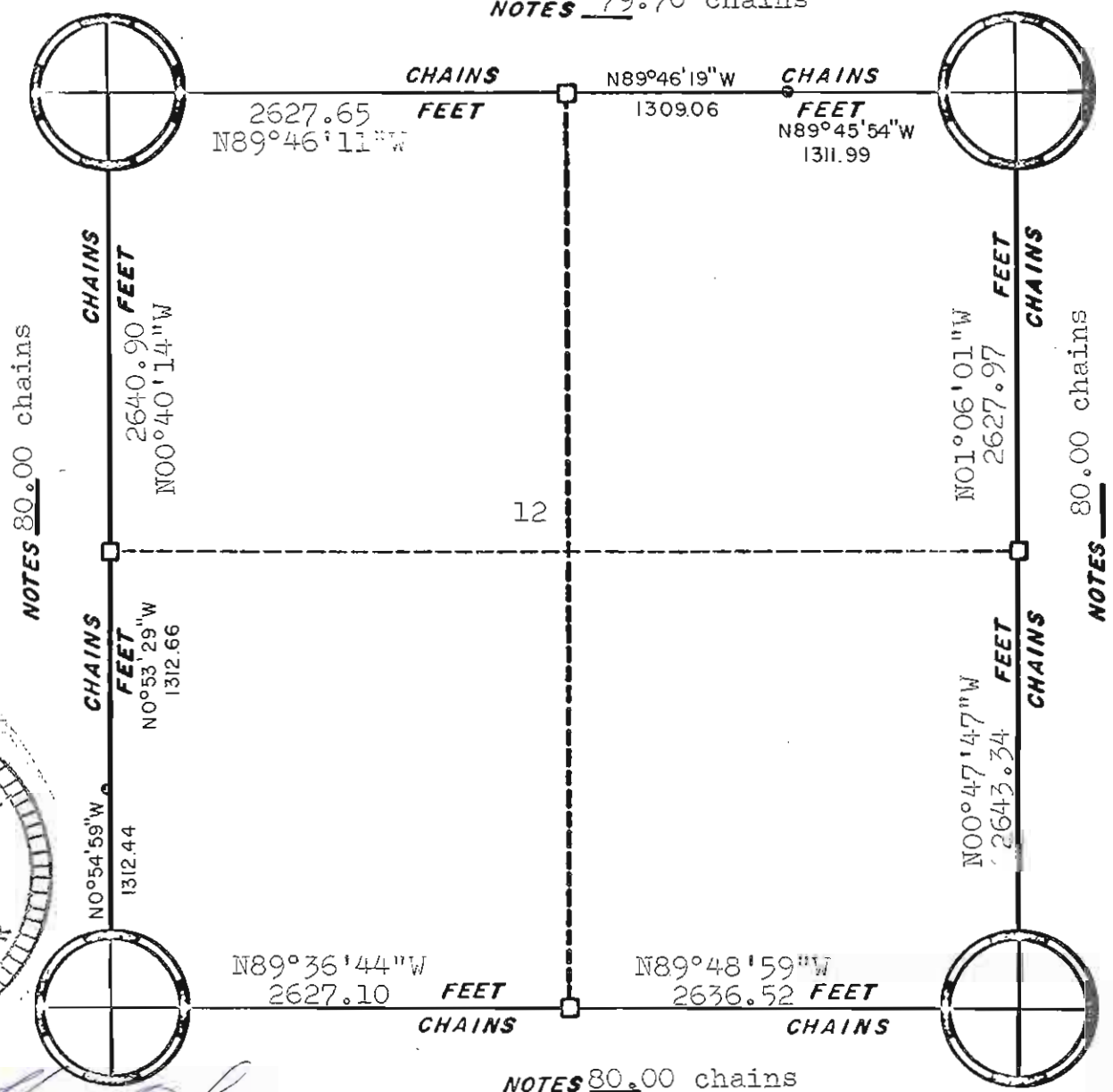
Harley A. Sime
Monroe County Surveyor

ORIGINAL SURVEY DATA

BY _____
DATE 1/26/76

SURVEYED BY <u>W.C. Jung</u>	CONTRACT DATE 1975 - 1976	COUNTY <u>MONROE</u>	TOWN-VILLAGE-CITY <u>Sparta</u>	SECTION <u>11</u>	TOWNSHIP <u>T17N</u>	RANGE <u>R4W</u>
------------------------------	------------------------------	----------------------	------------------------------------	----------------------	-------------------------	---------------------

NOTES 79.70 chains



Harley A. Sime

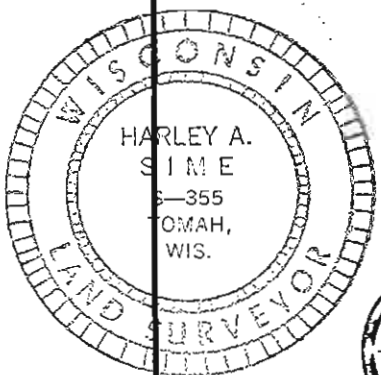
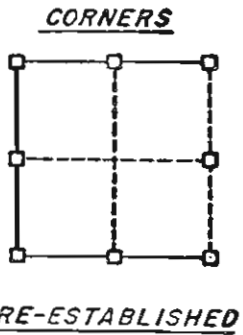
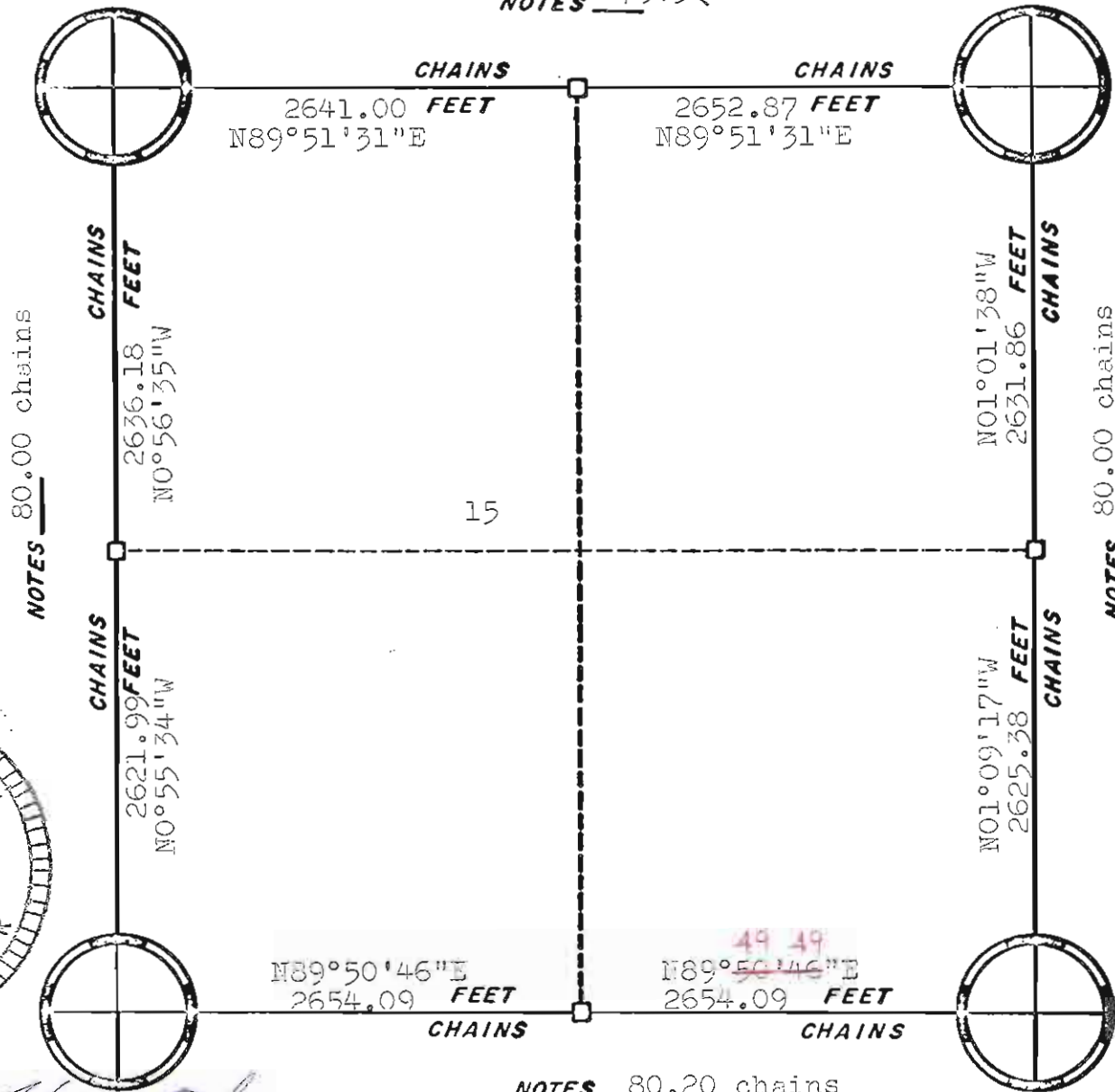
Harley A. Sime
Monroe County Surveyor

ORIGINAL SURVEY DATA

BY
DATE 1/26/76

SURVEYED BY W.C. Jung <i>ad.j.</i>	CONTRACT DATE 1975-1976	COUNTY MONROE	TOWN-VILLAGE-CITY Sparta	SECTION 12	TOWNSHIP T17N	RANGE R4W
---------------------------------------	----------------------------	---------------	-----------------------------	---------------	------------------	--------------

88
 NOTES 79.36 chains



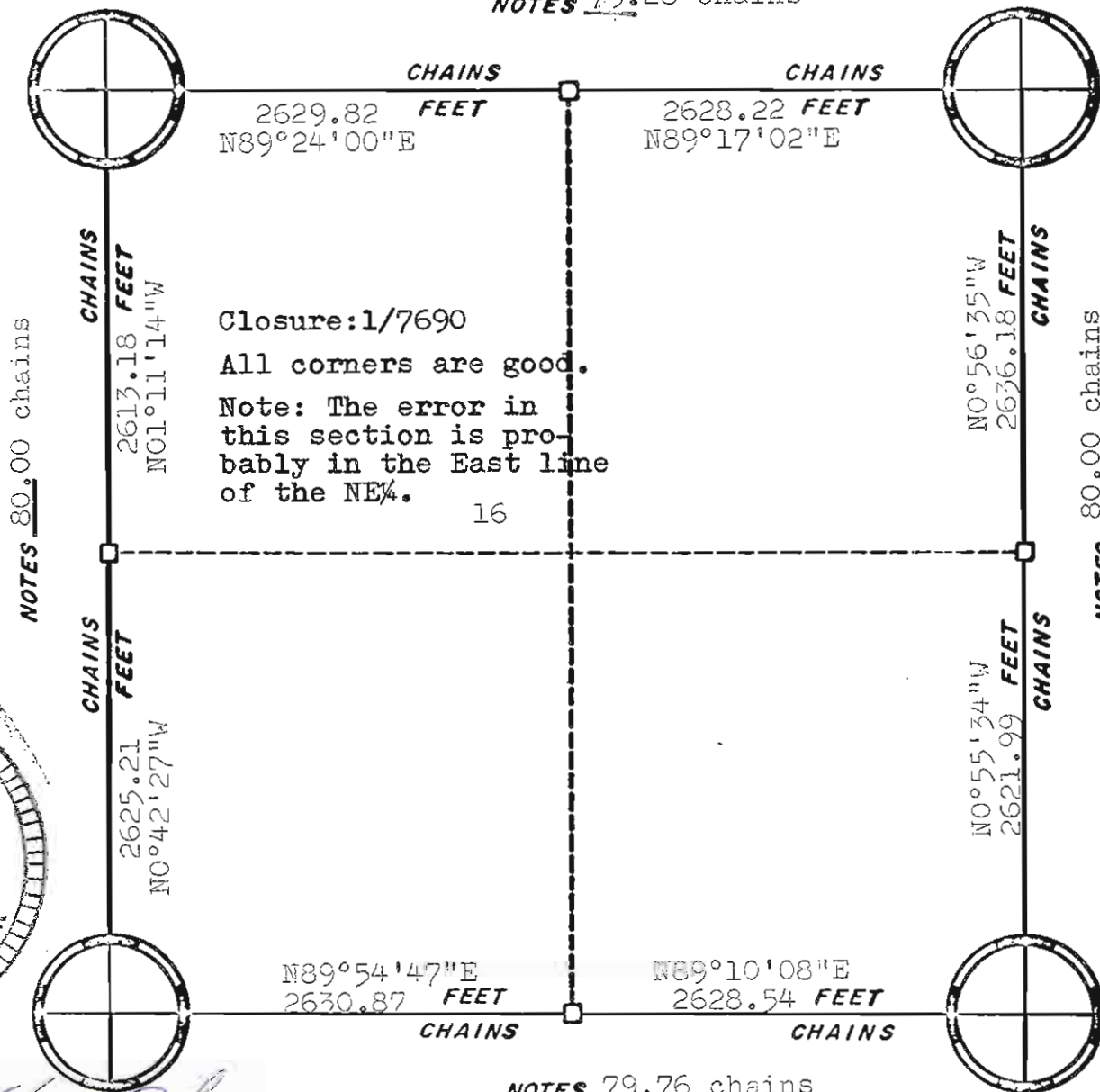
Harley A. Sime
 Harley A. Sime
 Monroe County Surveyor

NOTES 80.20 chains
ORIGINAL SURVEY DATA

BY _____
 DATE 1/26/76

SURVEYED BY <u>W.C. Jung</u>	CONTRACT DATE <u>1975 - 1976</u>	COUNTY <u>MONROE</u>	TOWN-VILLAGE-CITY <u>Sparta</u>	SECTION <u>15</u>	TOWNSHIP <u>T17N</u>	RANGE <u>R4W</u>
------------------------------	----------------------------------	----------------------	---------------------------------	-------------------	----------------------	------------------

NOTES 79.28 chains

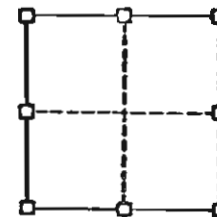


Closure: 1/7690
 All corners are good.
 Note: The error in this section is probably in the East line of the NE $\frac{1}{4}$.

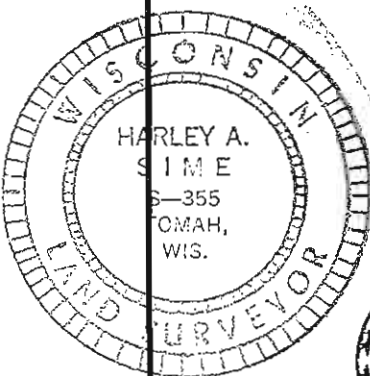
16



CORNERS



RE-ESTABLISHED



Harley A. Sime

Harley A. Sime
 Monroe County Surveyor

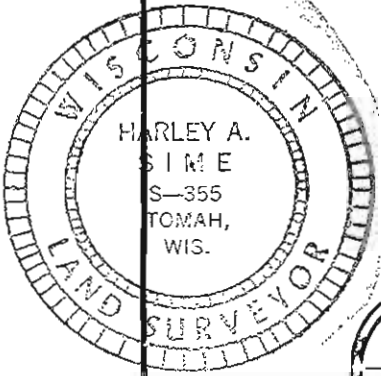
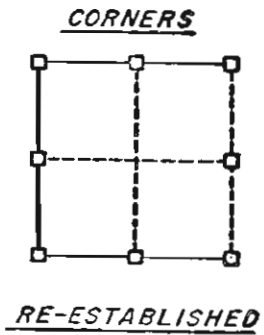
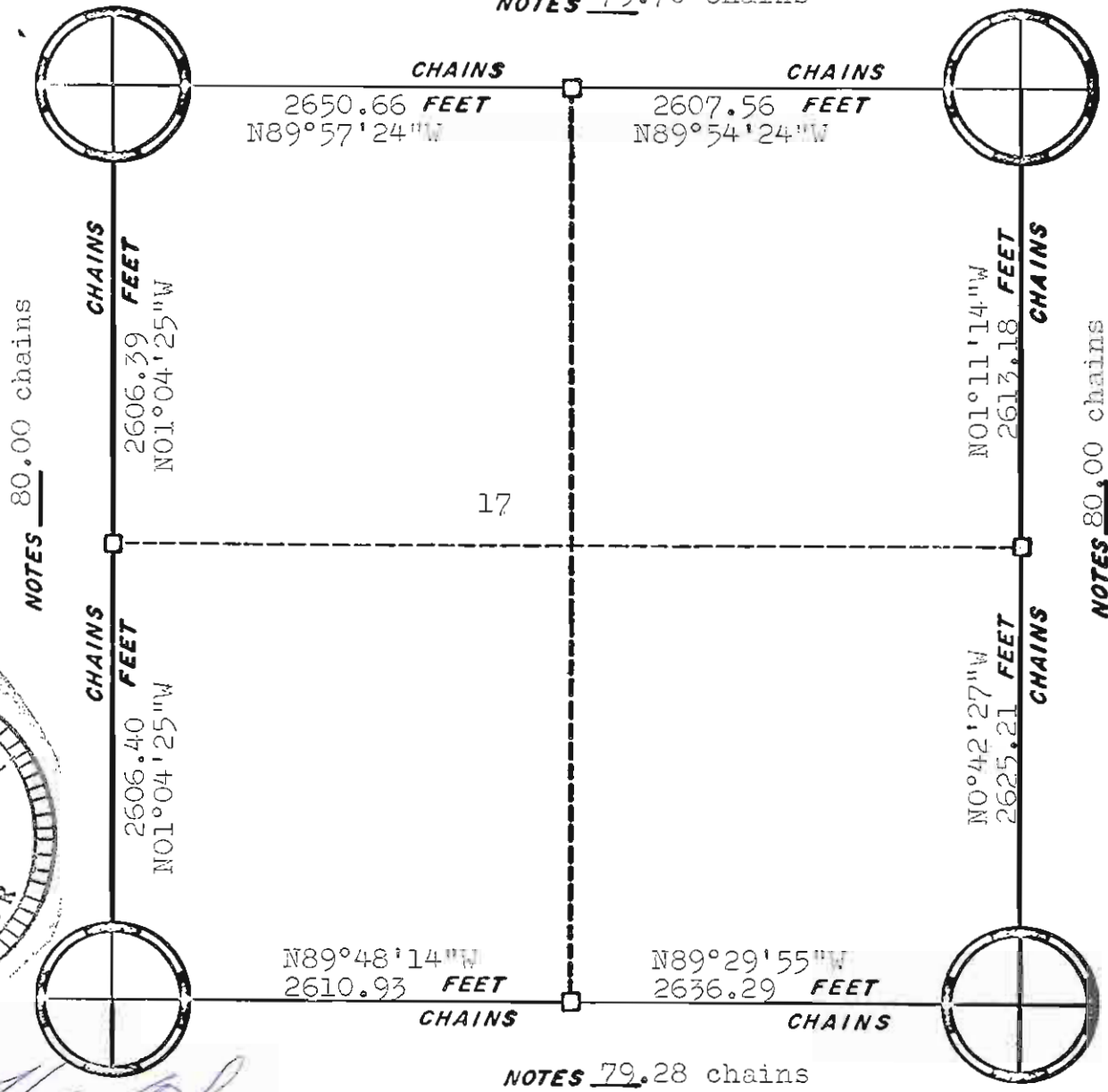
ORIGINAL SURVEY DATA

BY

DATE 1/26/76

SURVEYED BY W.C. Jung	CONTRACT DATE 1975 - 1976	COUNTY MONROE	TOWN-VILLAGE-CITY Sparta	SECTION 16	TOWNSHIP T17N	RANGE R4W
--------------------------	------------------------------	------------------	-----------------------------	---------------	------------------	--------------

NOTES 79.70 chains



Harley A. Sime

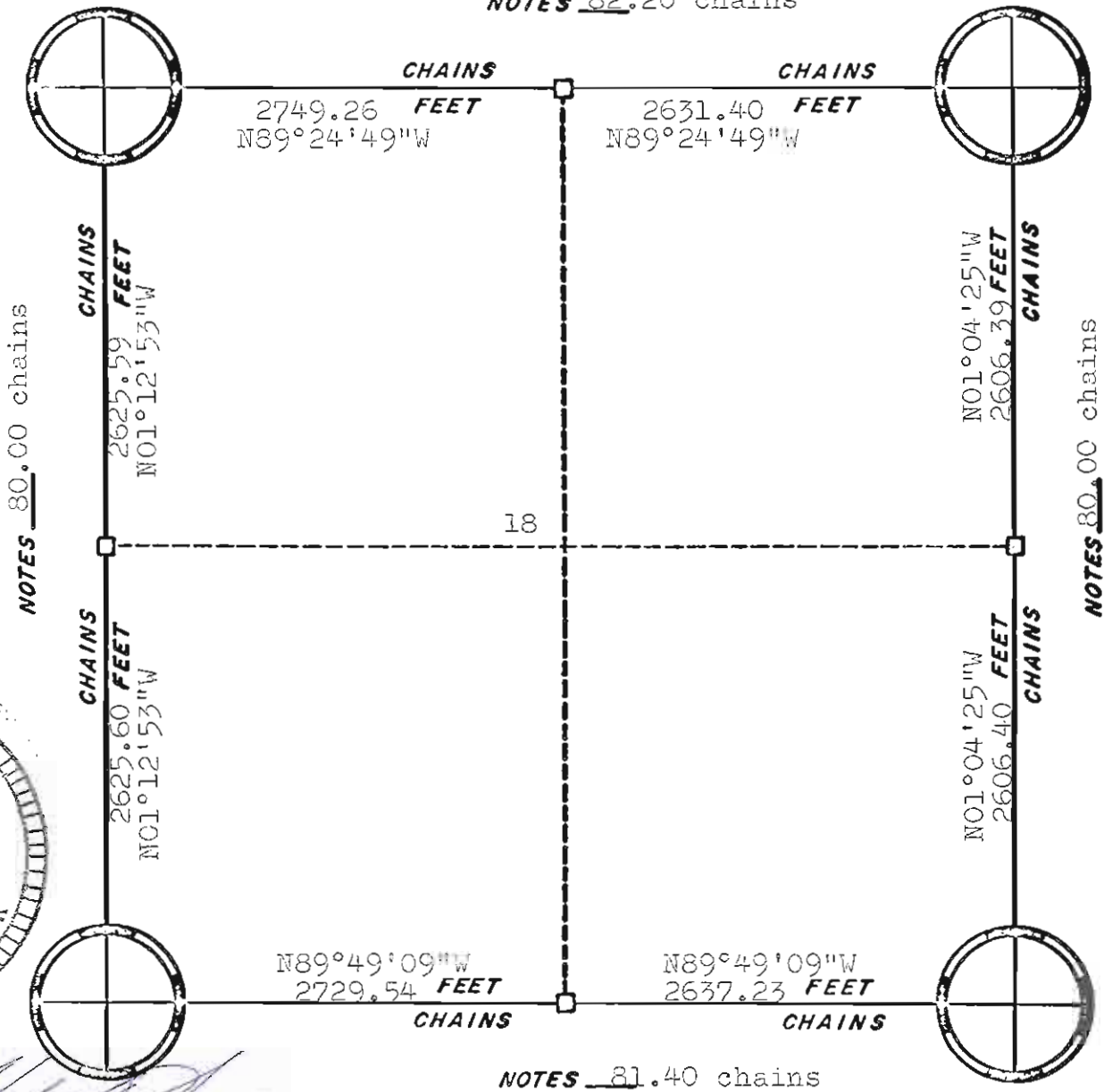
Harley A. Sime
Monroe County Surveyor

ORIGINAL SURVEY DATA

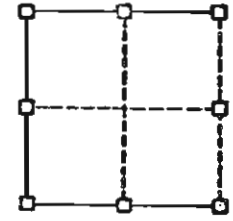
BY
DATE 1/26/76

SURVEYED BY <u>W.C. Jung</u>	CONTRACT DATE 1975 - 1976	COUNTY <u>MONROE</u>	TOWN-VILLAGE-CITY <u>Sparta</u>	SECTION <u>17</u>	TOWNSHIP <u>T17N</u>	RANGE <u>R4W</u>
------------------------------	------------------------------	----------------------	------------------------------------	----------------------	-------------------------	---------------------

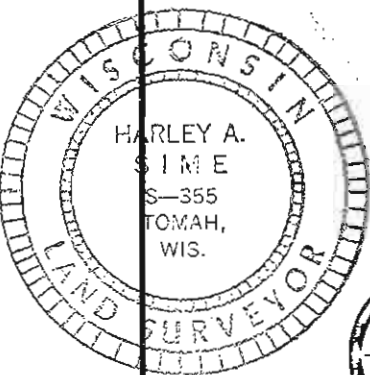
NOTES 82.20 chains



CORNERS



RE-ESTABLISHED



Harley A. Sime
 Harley A. Sime
 Monroe County Surveyor

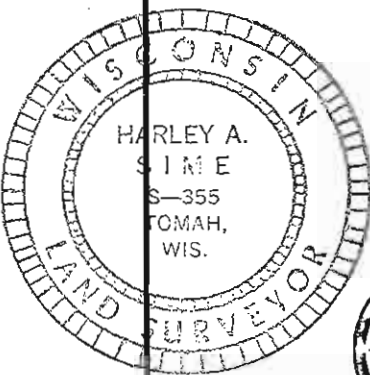
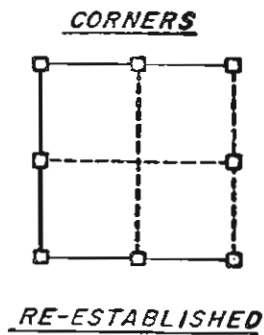
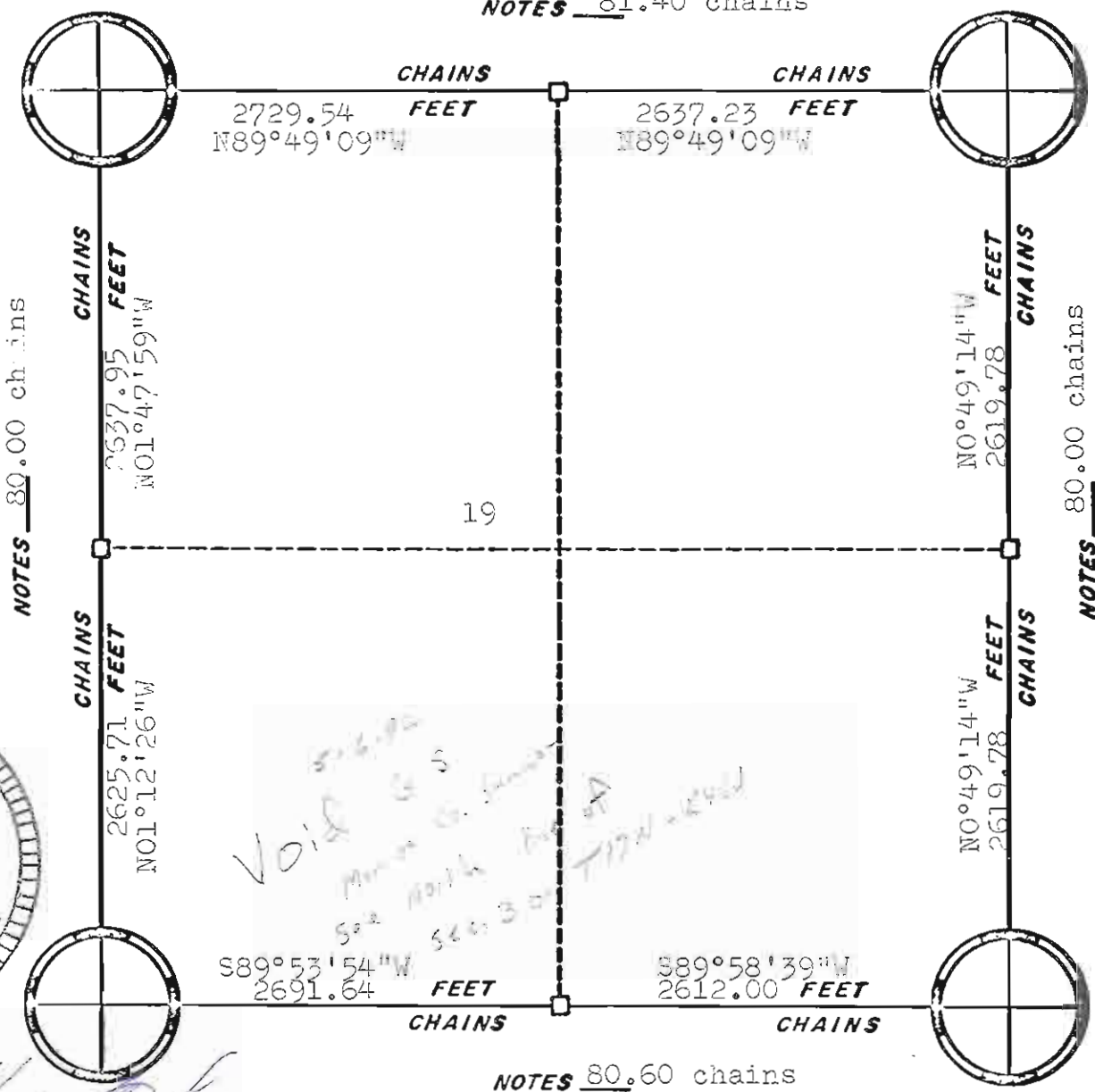
NOTES 81.40 chains

ORIGINAL SURVEY DATA

BY _____
 DATE 1/26/76

SURVEYED BY <i>W.C. Jung</i>	CONTRACT DATE 1975 - 1976	COUNTY MONROE	TOWN-VILLAGE-CITY Sparta	SECTION 18	TOWNSHIP T17N	RANGE R4W
------------------------------	------------------------------	---------------	-----------------------------	---------------	------------------	--------------

NOTES 81.40 chains



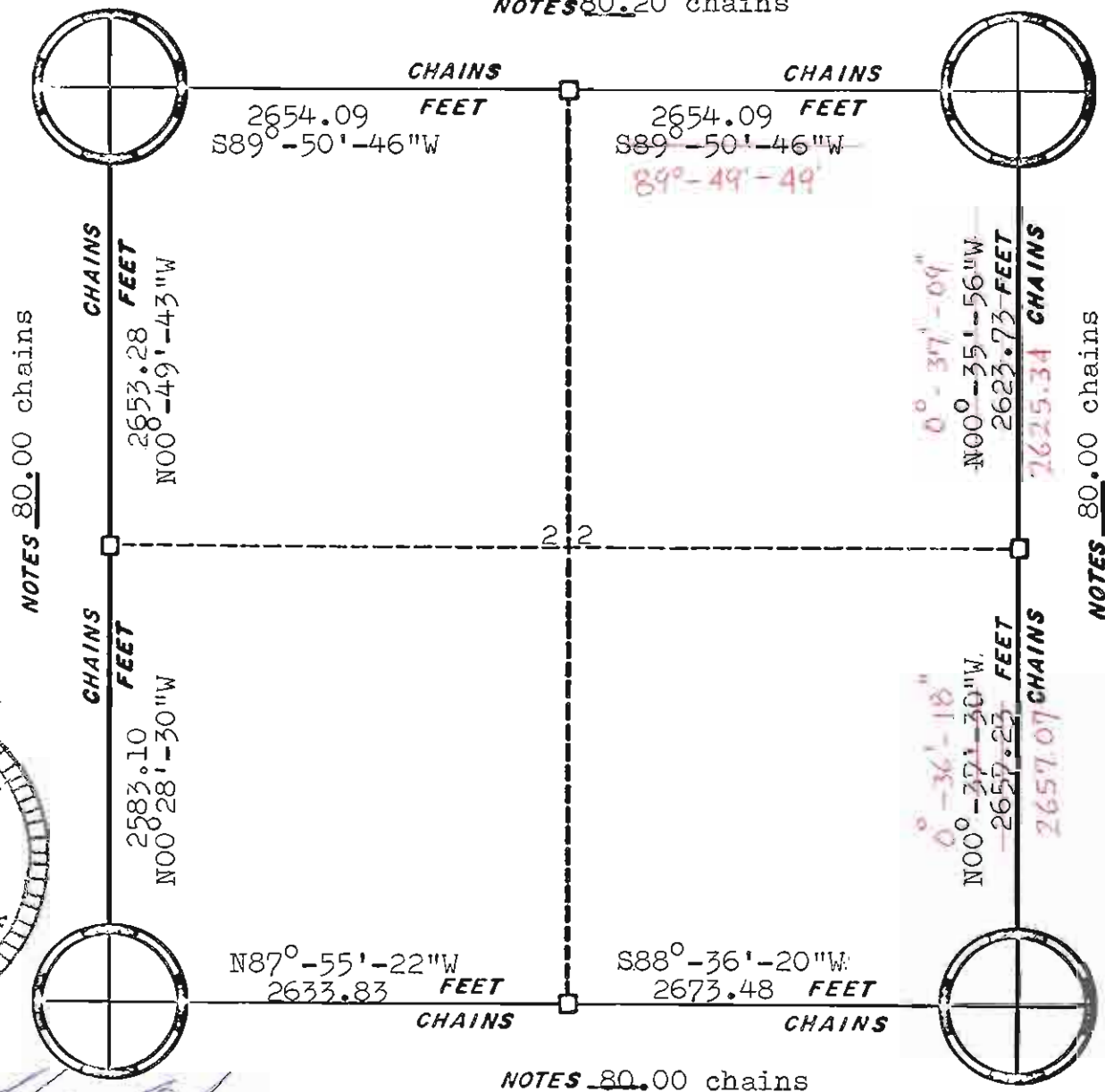
Harley A. Sime
 Harley A. Sime
 Monroe County Surveyor

ORIGINAL SURVEY DATA

BY
 DATE 1/26/76

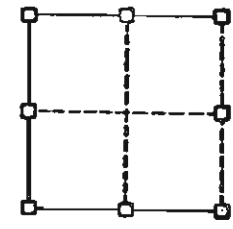
SURVEYED BY W.C. Jung	CONTRACT DATE 1975 - 1976	COUNTY MONROE	TOWN-VILLAGE-CITY Sparta	SECTION 19	TOWNSHIP T17N	RANGE R4W
--------------------------	------------------------------	------------------	-----------------------------	---------------	------------------	--------------

NOTES 80.20 chains



Closure = $\frac{1}{30,192}$

CORNERS

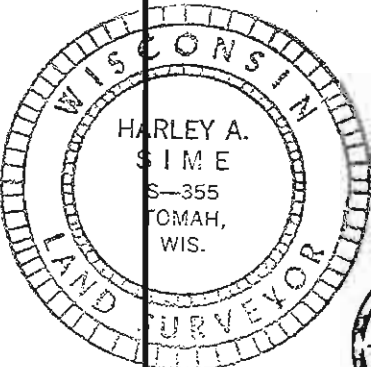


RE-ESTABLISHED

Revised 4/14/78

BY

DATE 7 July 1976



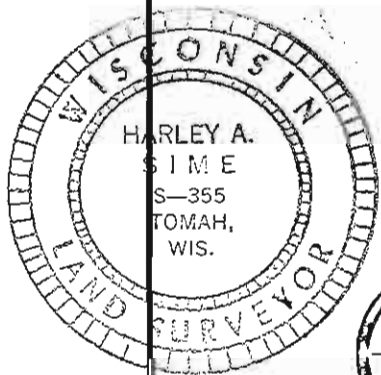
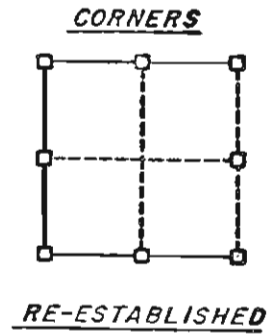
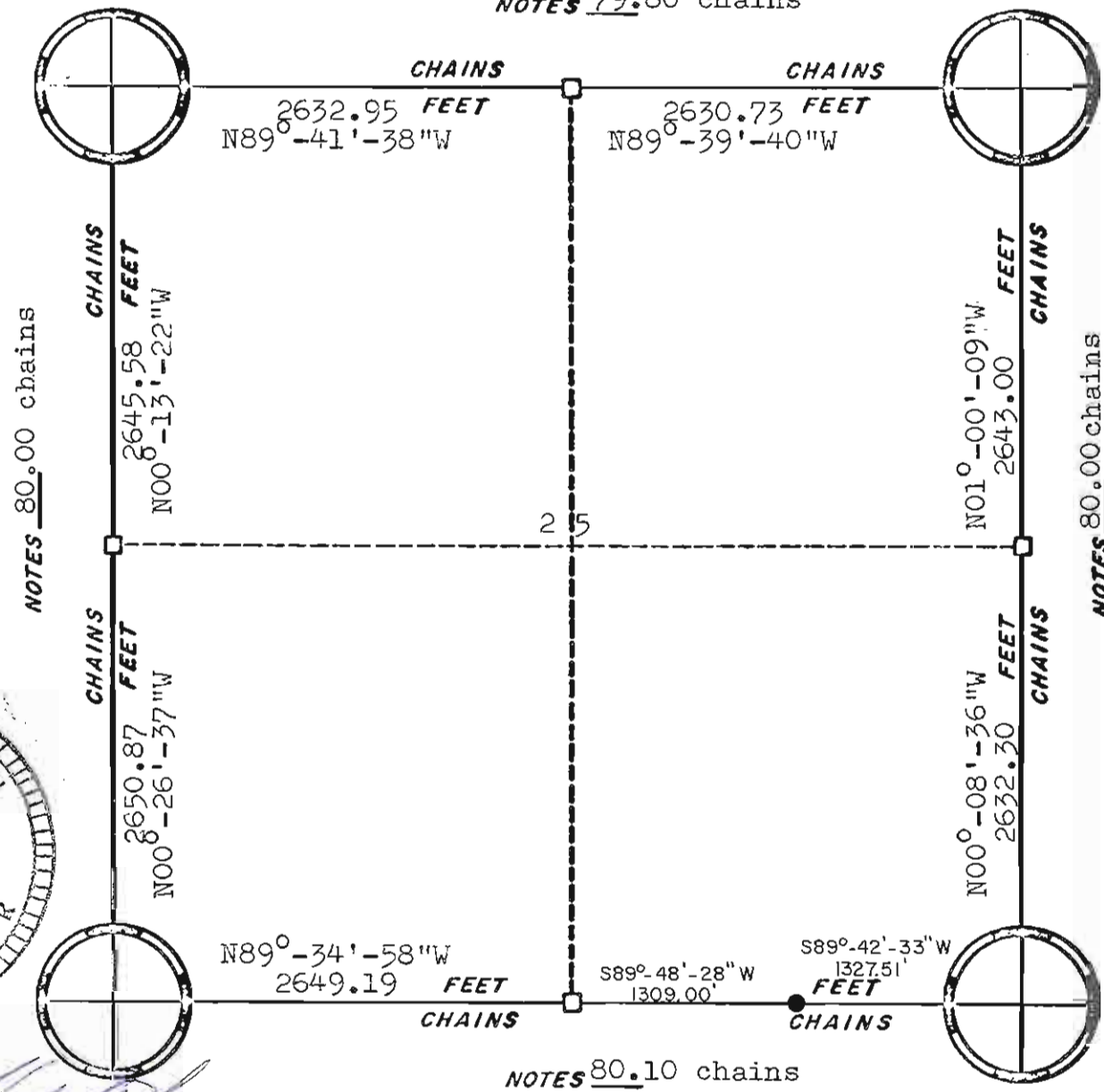
Harley A. Sime

Harley A. Sime
Monroe County Surveyor

ORIGINAL SURVEY DATA

SURVEYED BY D. J. Malliet	CONTRACT DATE 1975-1976	COUNTY MONROE	TOWN/VILLAGE/CITY Sparta	SECTION 22	TOWNSHIP 17N	RANGE 4W
------------------------------	----------------------------	---------------	-----------------------------	---------------	-----------------	-------------

NOTES 79.80 chains



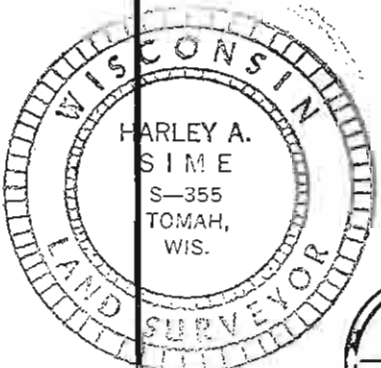
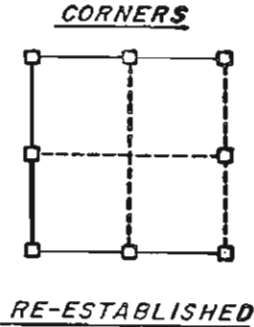
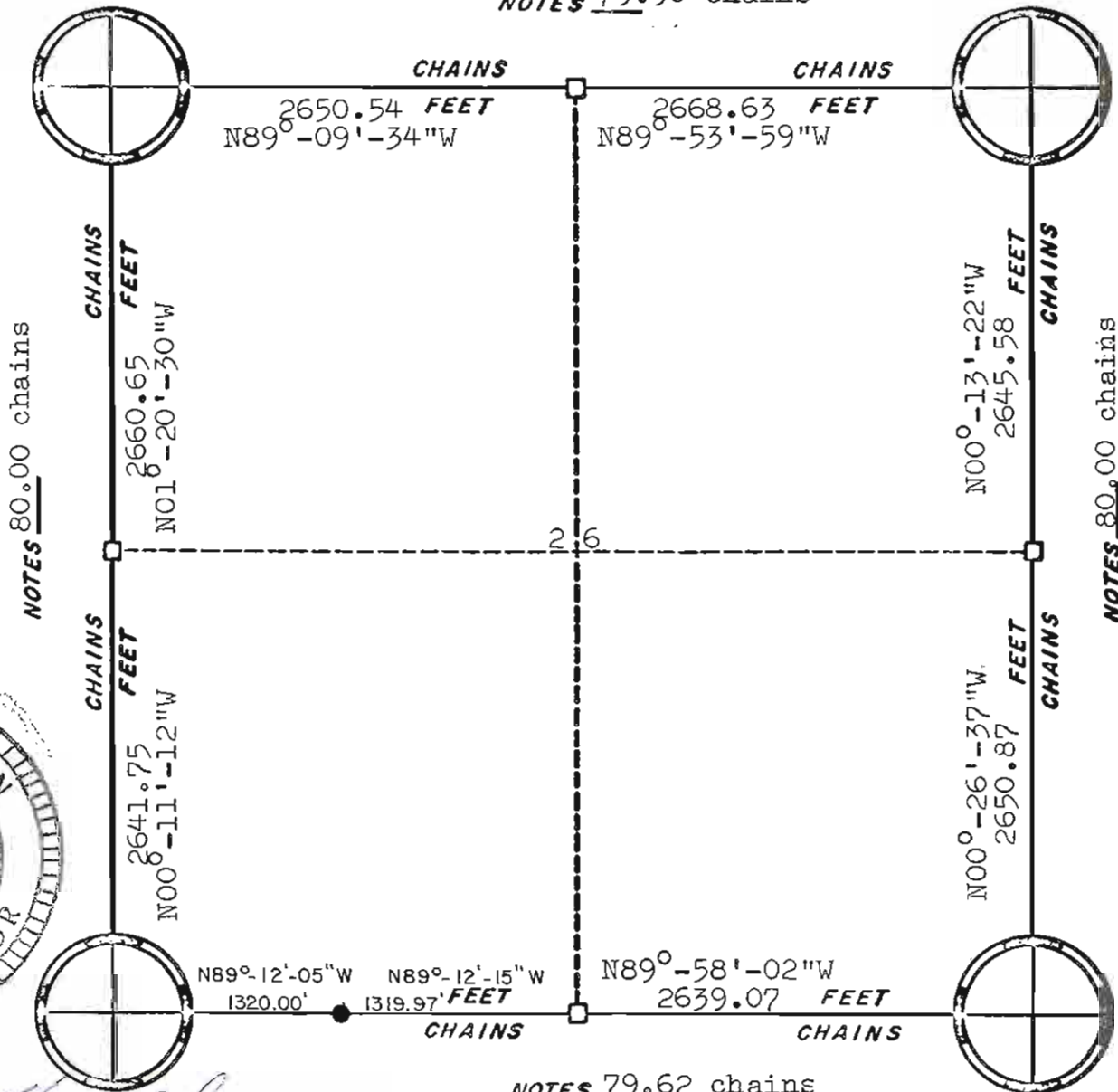
Harley A. Sime
 Harley A. Sime
 Monroe County Surveyor

ORIGINAL SURVEY DATA

BY
 DATE 7 July 1976

SURVEYED BY D.J. Malliet	CONTRACT DATE 1975-1976	COUNTY MONROE <u> </u>	TOWN- VILLAGE -CITY Sparta	SECTION 25	TOWNSHIP 17N	RANGE 4W
-----------------------------	----------------------------	------------------------------------	--	---------------	-----------------	-------------

NOTES 79.90 chains



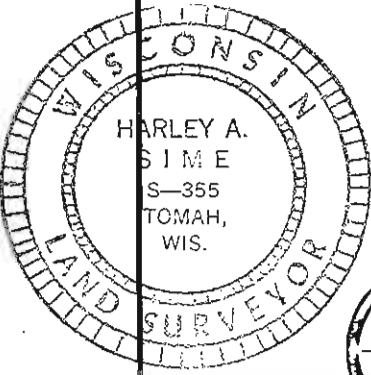
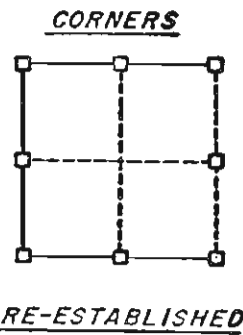
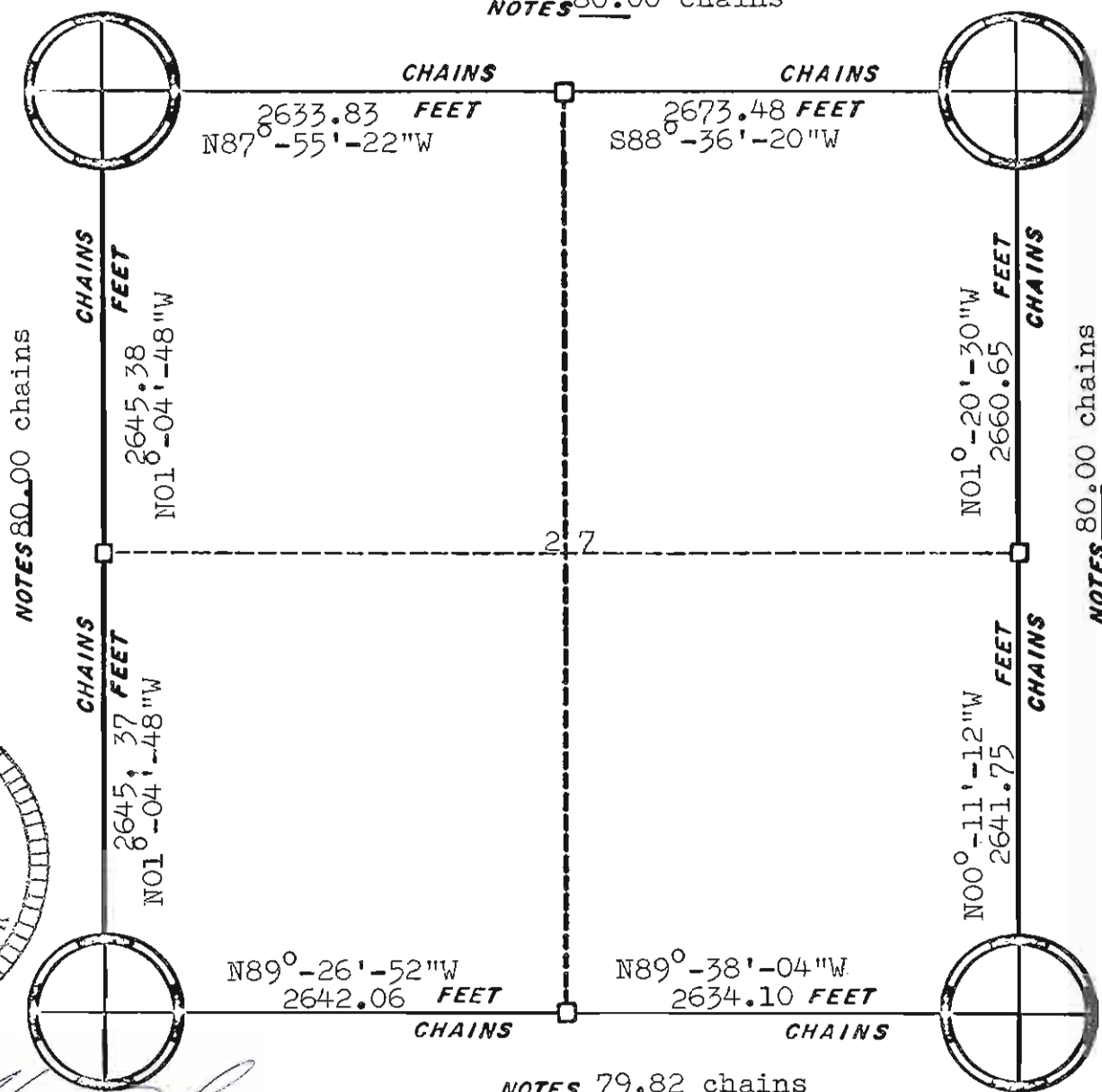
Harley A. Sime
 Harley A. Sime
 Monroe County Surveyor

ORIGINAL SURVEY DATA

BY
 DATE 7 July 1976

SURVEYED BY D.J. Malliet	CONTRACT DATE 1975-1976	COUNTY MONROE <u> </u>	TOWN-VILLAGE/CITY Sparta	SECTION 26	TOWNSHIP 17N	RANGE 4W
-----------------------------	----------------------------	------------------------------------	-----------------------------	---------------	-----------------	-------------

NOTES 80.00 chains



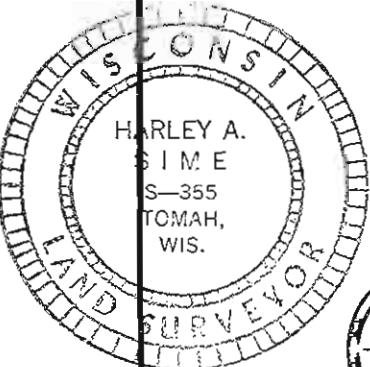
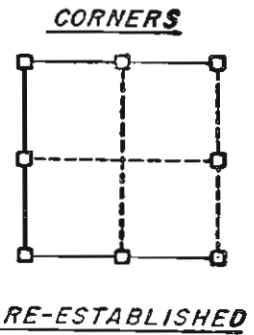
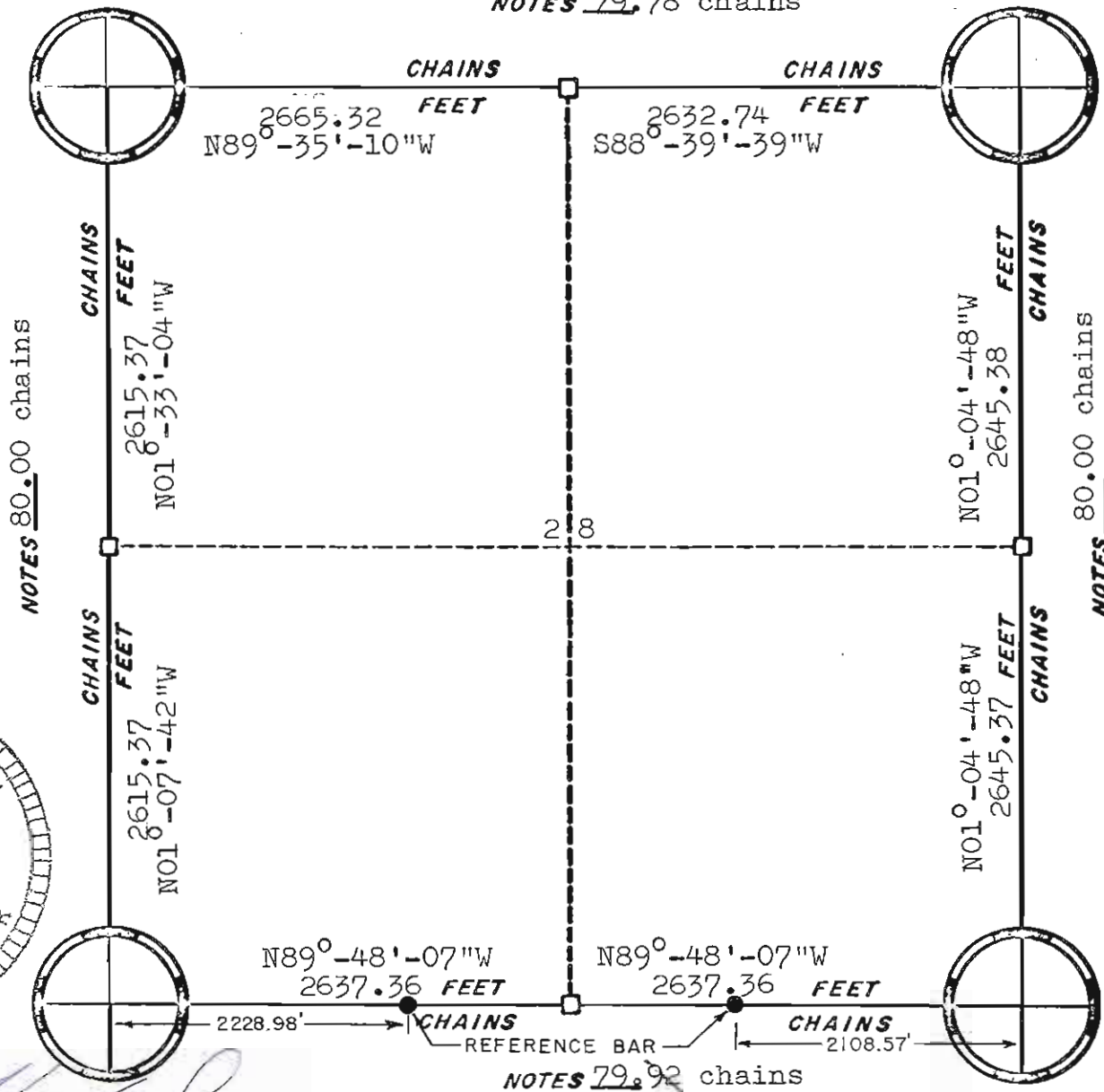
Harley A. Sime
Harley A. Sime
Monroe County Surveyor

ORIGINAL SURVEY DATA

BY
DATE 7 July 1976

SURVEYED BY	CONTRACT DATE	COUNTY MONROE	TOWN-VILLAGE-CITY	SECTION	TOWNSHIP	RANGE
D.J. Malliet	1975-1976	<u> </u>	parta	27	17N	4W

NOTES 79.78 chains



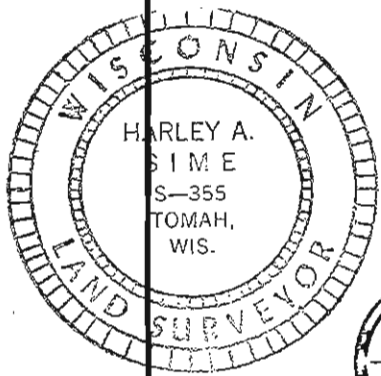
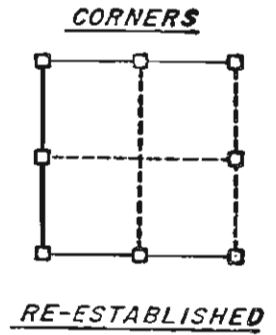
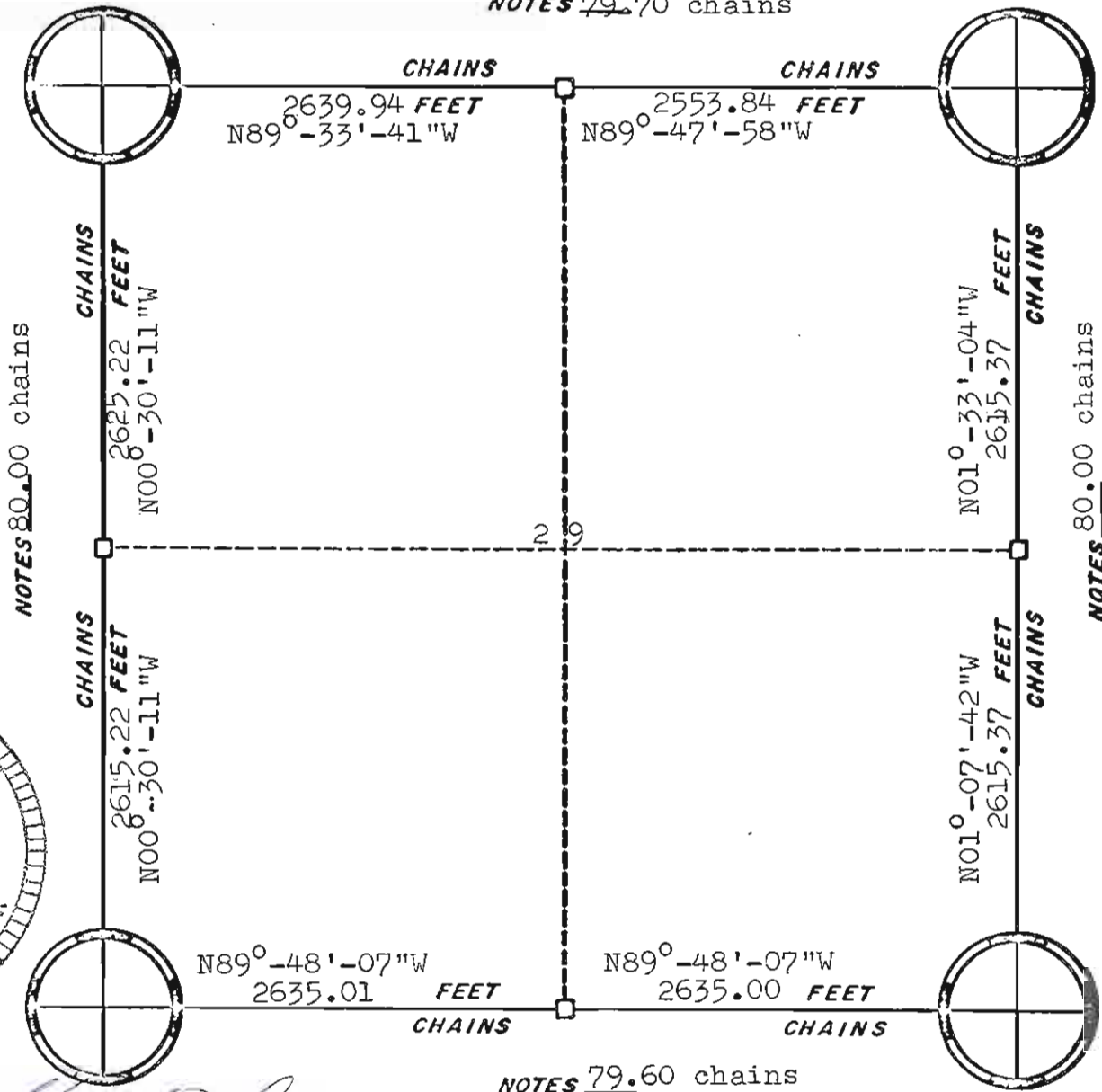
Harley A. Sime
 Harley A. Sime
 Monroe County Surveyor

ORIGINAL SURVEY DATA

BY
 DATE July 1976

SURVEYED BY D.J. Malliet	CONTRACT DATE 1975-1976	COUNTY MONROE	TOWN-VILLAGE/TOWNSHIP Sparta	SECTION 28	TOWNSHIP 17N-	RANGE 4W
-----------------------------	----------------------------	---------------	---------------------------------	---------------	------------------	-------------

NOTES 79.70 chains



Harley A. Sime

Harley A. Sime
Monroe County Surveyor

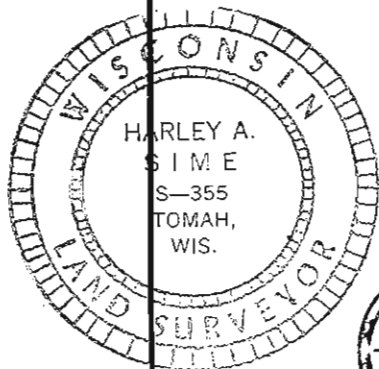
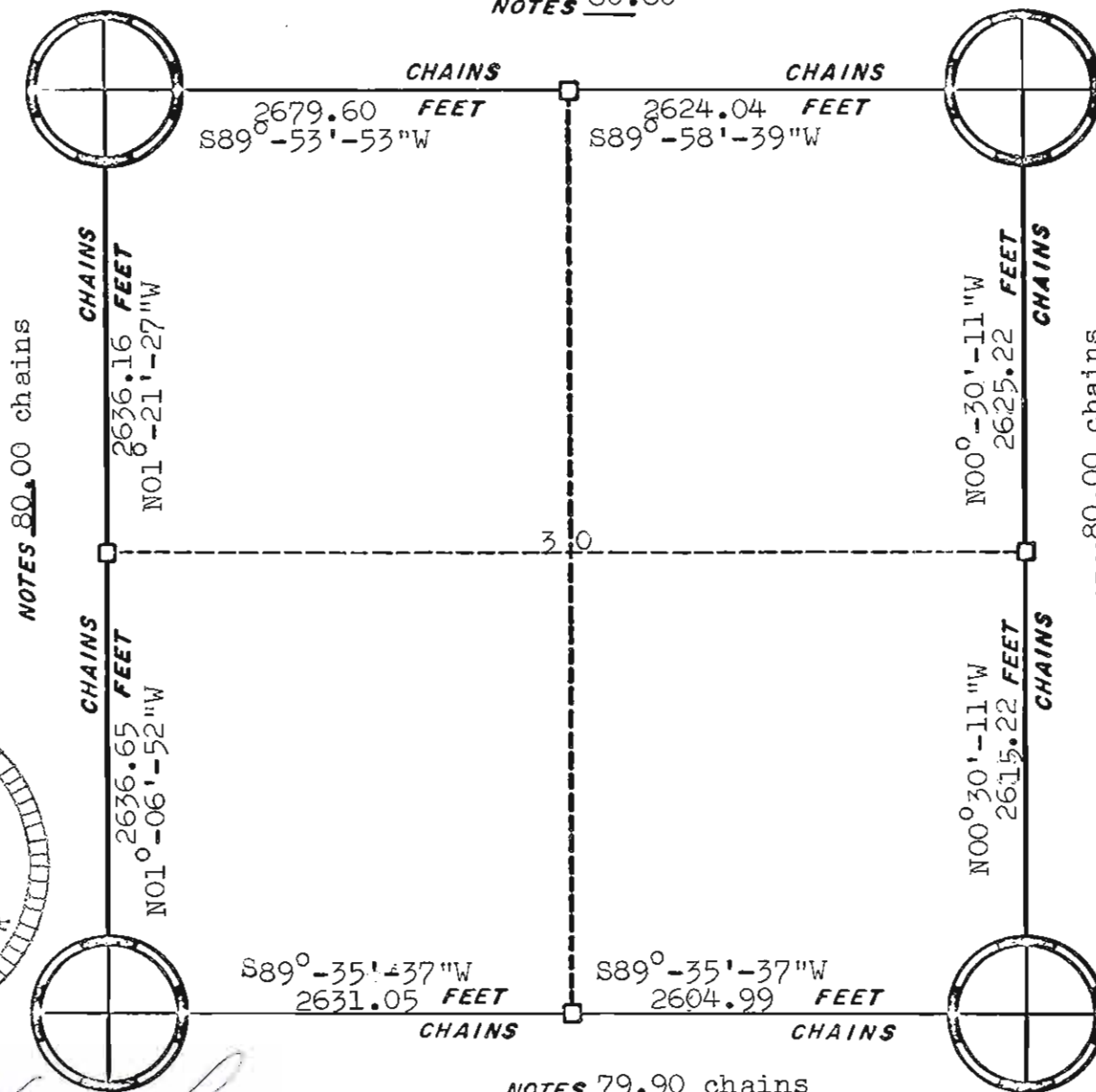
ORIGINAL SURVEY DATA

BY

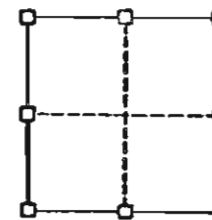
DATE 7 July 1976

SURVEYED BY	CONTRACT DATE	COUNTY MONROE	TOWN- MILLABE SPARTA	SECTION	TOWNSHIP	RANGE
D.J. Malliet	1975-1976		Sparta	29	17N	4W

NOTES 80.60



CORNERS



RE-ESTABLISHED

Harley A. Sime
 Harley A. Sime
 Monroe County Surveyor

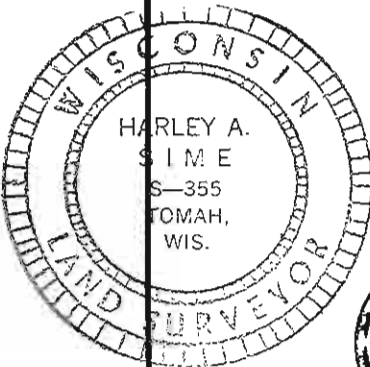
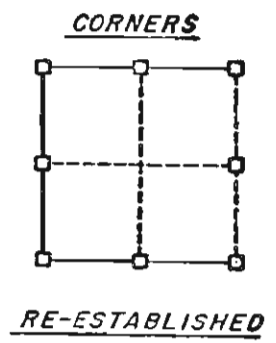
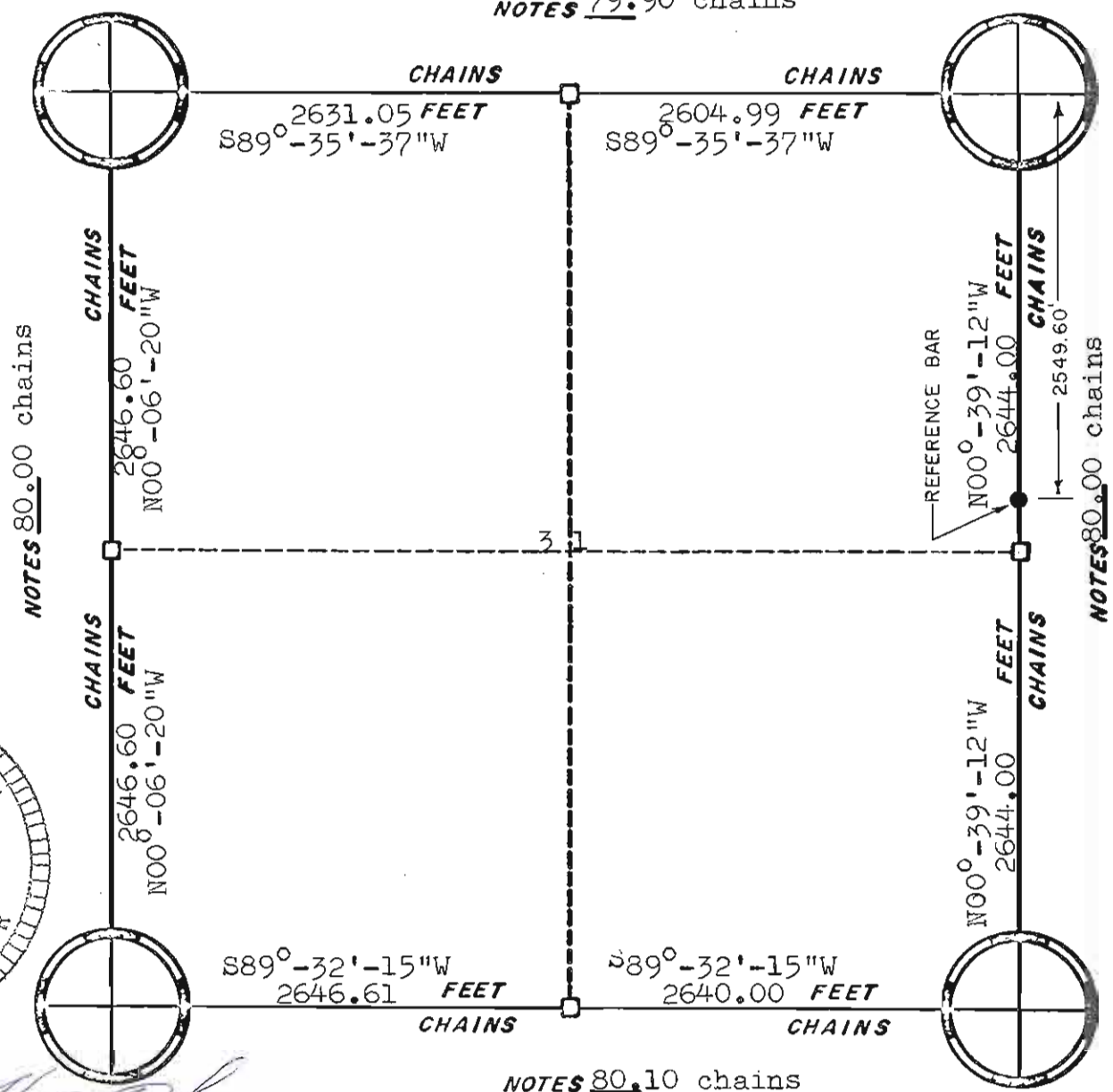
ORIGINAL SURVEY DATA

BY

DATE 7 July 1976

SURVEYED BY	CONTRACT DATE	COUNTY MONROE	TOWN-MILLAGE/CITY	SECTION	TOWNSHIP	RANGE
D.J. Malliet	1975-1976		Sparta	30	17N	4W

NOTES 79.90 chains



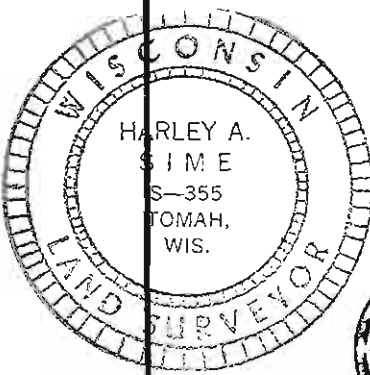
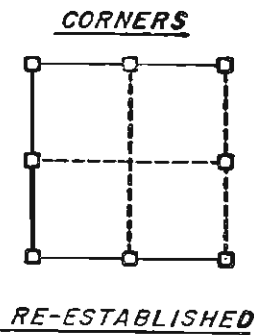
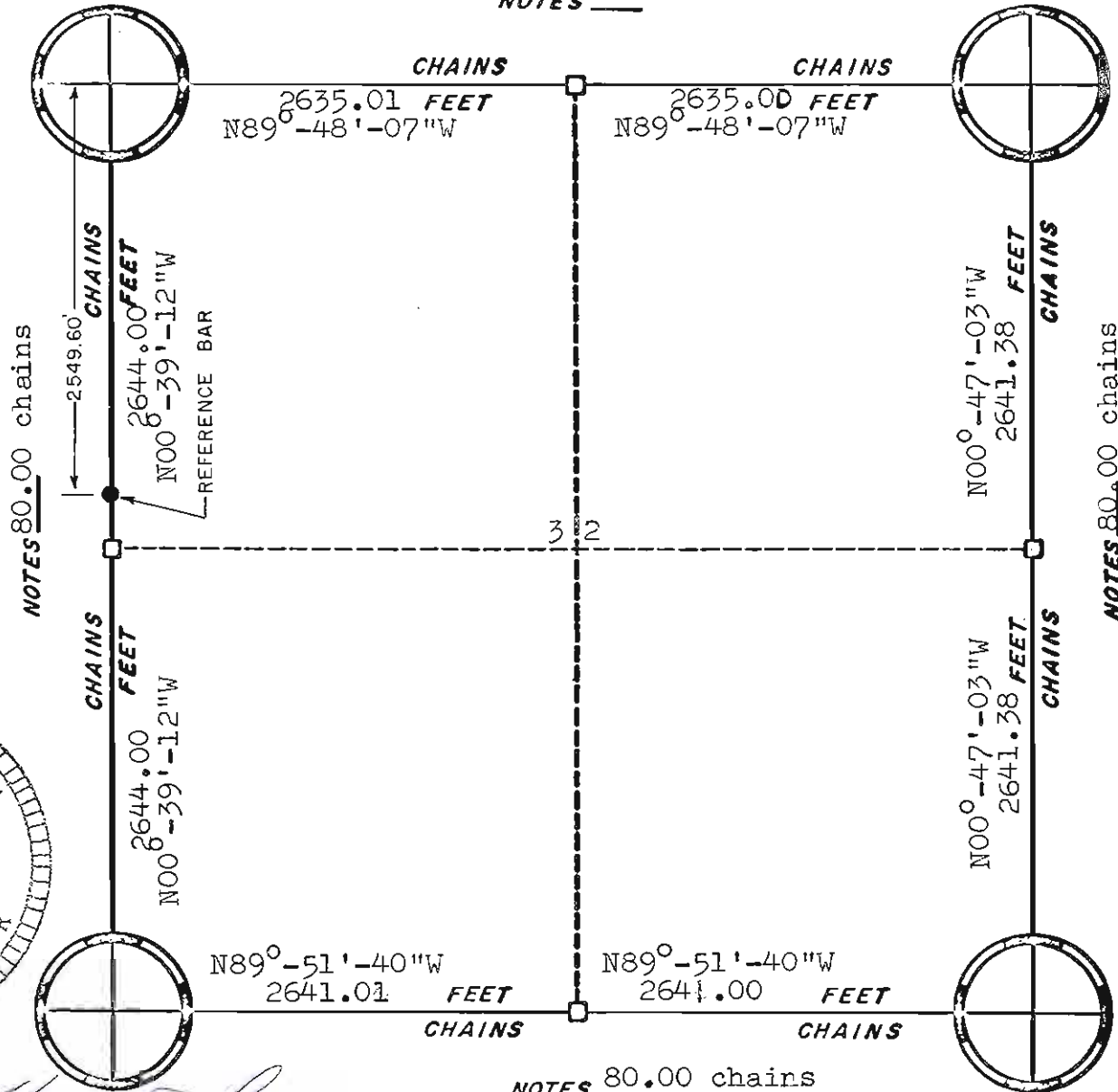
Harley A. Sime
 Harley A. Sime
 Monroe County Surveyor

ORIGINAL SURVEY DATA

BY
 DATE 7 July 1976

SURVEYED BY D.J. Malliet	CONTRACT DATE 1975-1976	COUNTY MONROE <u> </u>	TOWN-VILLAGE / CITY Sparta	SECTION 31	TOWNSHIP 17N	RANGE 4W
-----------------------------	----------------------------	------------------------------------	-------------------------------	---------------	-----------------	-------------

NOTES 79.60 chains



Harley A. Sime

Harley A. Sime
Monroe County Surveyor

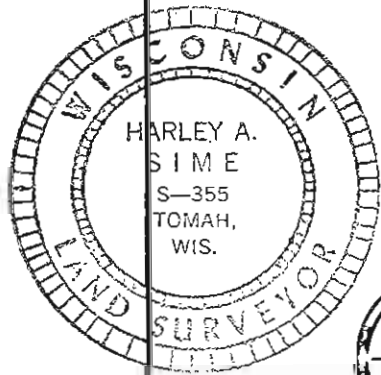
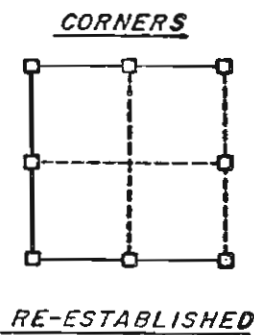
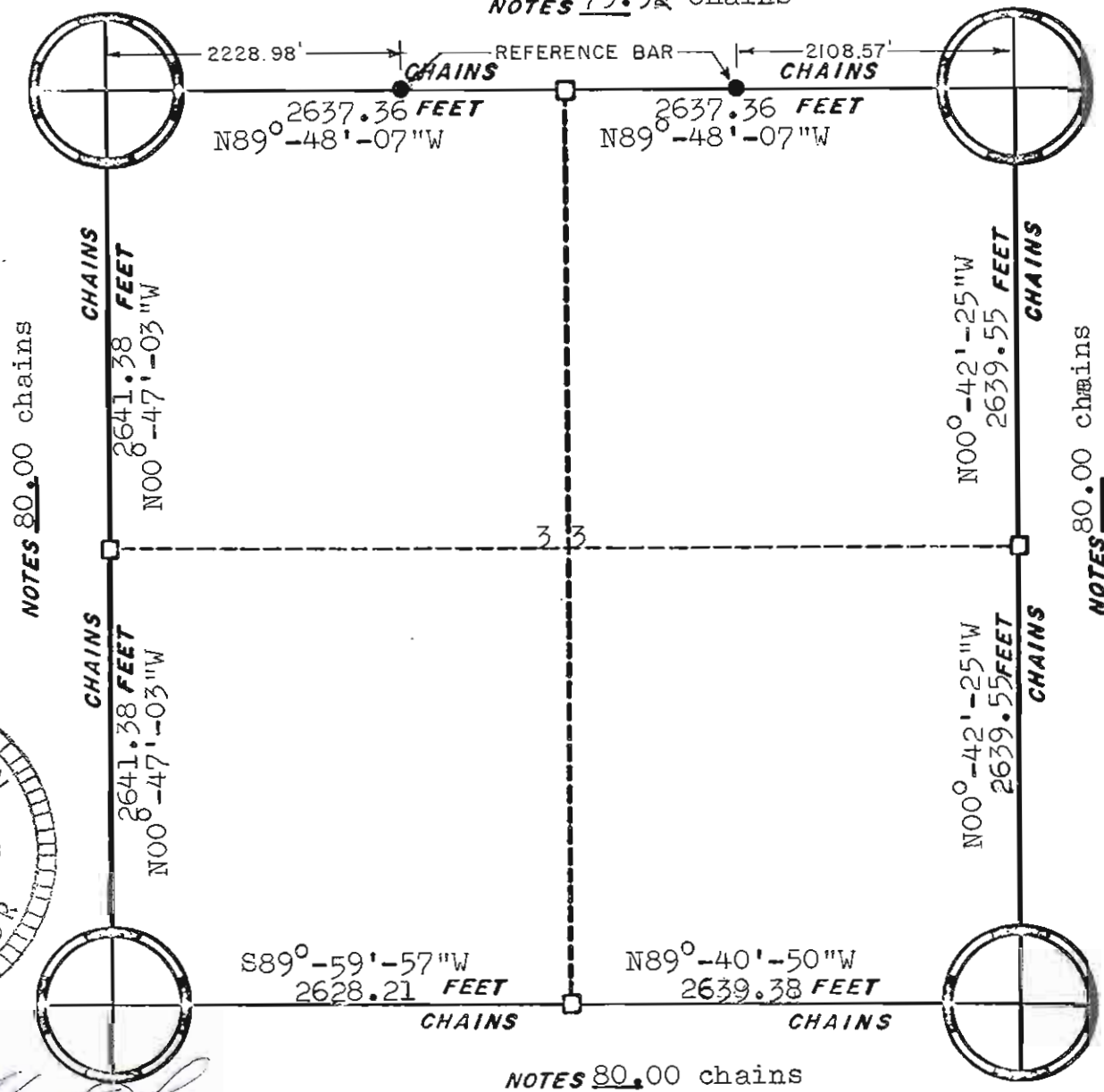
ORIGINAL SURVEY DATA

BY

DATE 7 July 1976

SURVEYED BY D.J.Malliet	CONTRACT DATE 1975-1976	COUNTY MONROE	TOWN-VILLAGE/CITY Sparta	SECTION 32	TOWNSHIP 17N	RANGE 4W
----------------------------	----------------------------	---------------	-----------------------------	---------------	-----------------	-------------

NOTES ⁷²~~79.92~~ chains



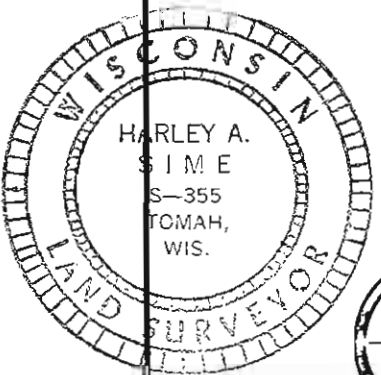
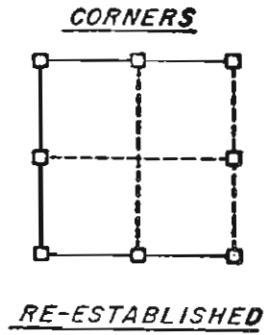
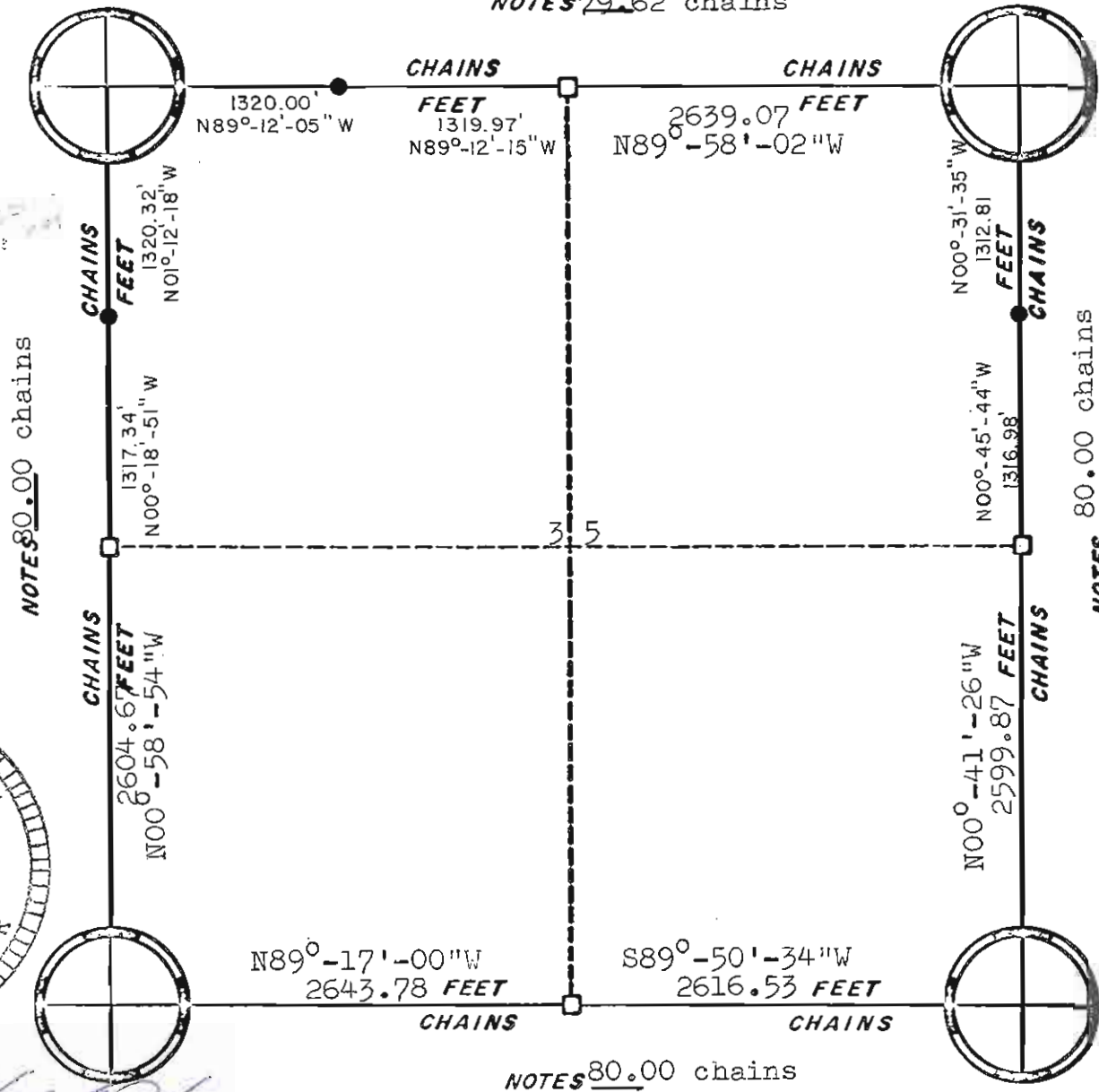
Harley A. Sime
 Harley A. Sime
 Monroe County Surveyor

ORIGINAL SURVEY DATA

BY _____
 DATE 7 July 1976

SURVEYED BY D.J. Malliet	CONTRACT DATE 1975-1976	COUNTY MONROE [REDACTED]	TOWN-VILLAGE & CITY Sparta	SECTION 33	TOWNSHIP 17N	RANGE 4W
-----------------------------	----------------------------	-----------------------------	-------------------------------	---------------	-----------------	-------------

NOTES 79.62 chains



Harley A. Sime

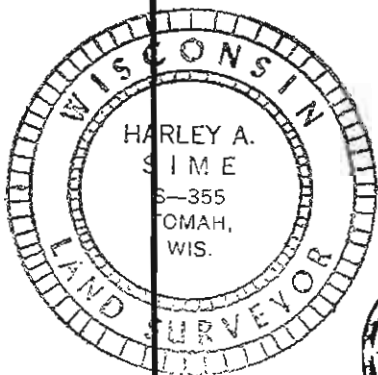
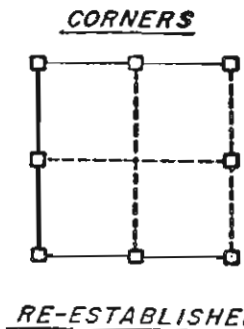
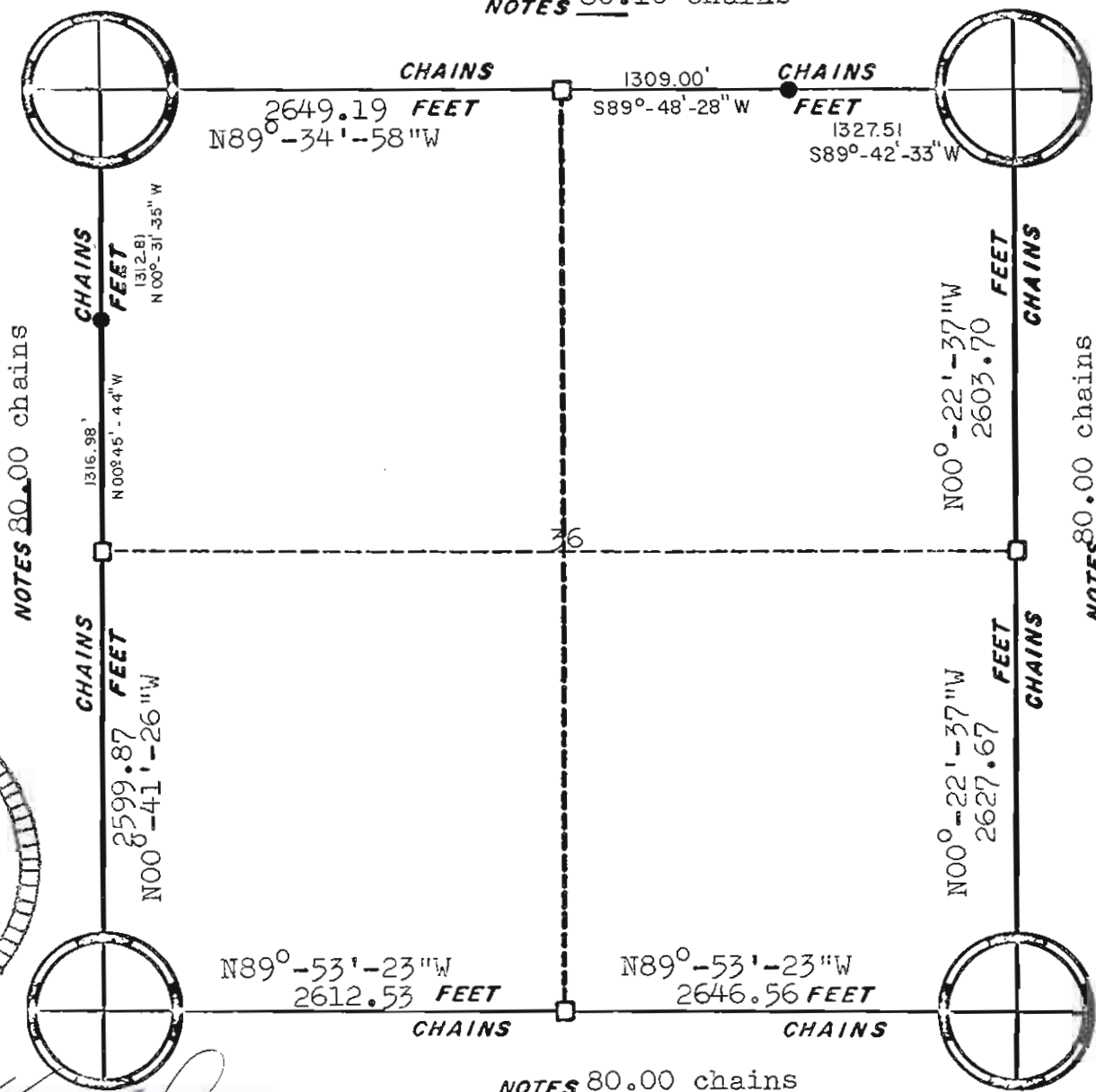
Harley A. Sime
Monroe County Surveyor

ORIGINAL SURVEY DATA

BY _____
DATE 7 July 1976

SURVEYED BY D.J. Malliet	CONTRACT DATE 1975-1976	COUNTY MONROE [REDACTED]	TOWN-VILLAGE/CITY Sparta	SECTION 35	TOWNSHIP 17N	RANGE 4W
-----------------------------	----------------------------	-----------------------------	-----------------------------	---------------	-----------------	-------------

NOTES 80.10 chains



Harley A. Sime
 Harley A. Sime
 Monroe County Surveyor

ORIGINAL SURVEY DATA

BY _____
 DATE 7 July 1976

SURVEYED BY D.J. Malliet	CONTRACT DATE 1975-1976	COUNTY MONROE	TOWN-VILLAGE/CITY Sparta	SECTION 36	TOWNSHIP 17N	RANGE 4W
-----------------------------	----------------------------	---------------	-----------------------------	---------------	-----------------	-------------