

CERTIFICATE

CERTIFIED LAND CORNER

No. 120

21704362000

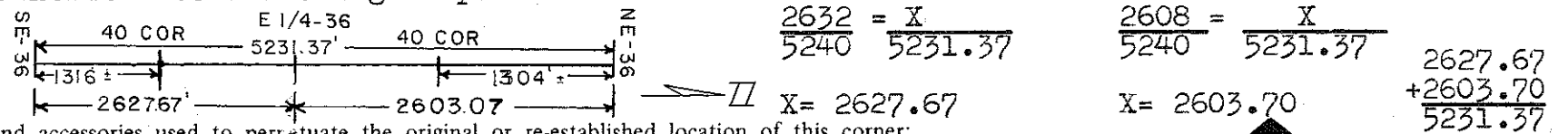
I, Harley A. Sime, do hereby certify that on the 22 day of June 19 76, I found ~~(evidence)~~ (no evidence) of the E 1/4 corner of Sec. 36, T. 17 N, R. 4 W Fourth Principal Meridian, and I re-established said corner according to the Wisconsin Statutes as shown and described hereon.

Dated this 8 day of July 19 76.

Harley A. Sime
 COUNTY SURVEYOR
Title

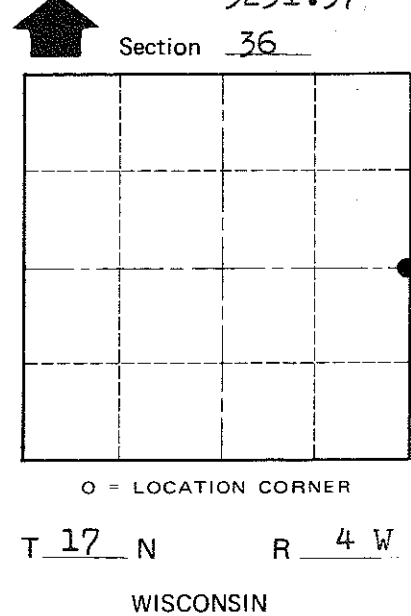
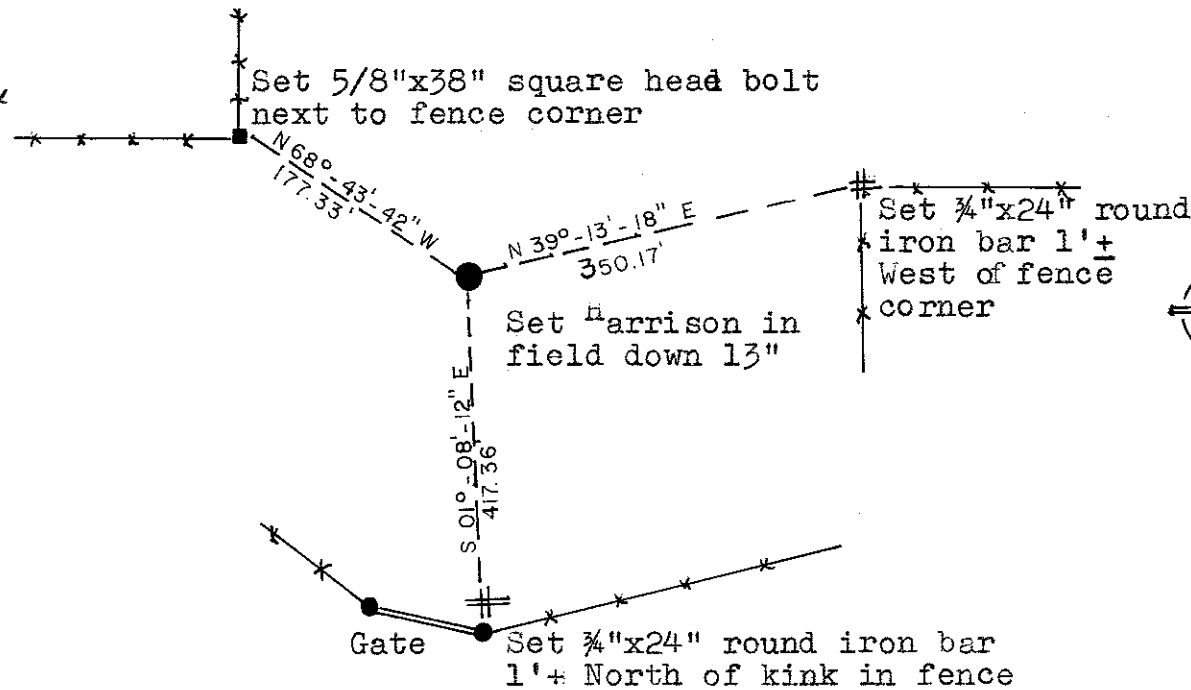
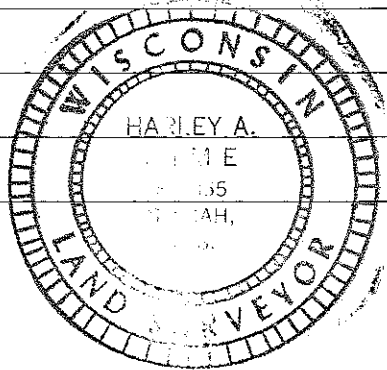
History of original corner establishment:

Description of corner evidence found: I accepted the stone at the NE corner of Sec. 36 and the stone & fence corner at the Se corner of Sec. 36. There were no existing fences at this corner. I measured (roughly) the east line of the SE 1/4-SE 1/4 and the east line of the NE 1/4-NE 1/4 and doubling and adding the forty distances produced a line longer than the computed distance between the section corners. I then proportionally reduced each doubled forty distance to fit the computed distance and placed the corner on line between the section corners. See following computations:



Description of corner and witness monuments, references and accessories used to perpetuate the original or re-established location of this corner:

Witnesses to corner location: Douglas J. Malliet
D.J. Malliet Crew Chief, R.L.S.
C. Pietz



COUNTY SURVEYOR FORM NO. 1

SURVEY CONTROL ORDER

| | |
|------------|-------|
| Horizontal | _____ |
| Vertical | _____ |

WISCONSIN COORDINATE SYSTEM

| Corner | East (X) | North (Y) | Elevation (Z) | Zone |
|-------------------|----------|-----------|---------------|------|
| Control Sta. Name | | | | |

City, Village or Town of Sparta
 County of Monroe