

CERTIFICATE

CERTIFIED LAND CORNER

No. 122

**21704360020**

I, Harley A. Sime do hereby certify that on the 16 day of June 1976, I found ~~(stone)~~ (no evidence) of the S $\frac{1}{4}$  corner of Sec. 36, T 17 N, R 4 W, Fourth Principal Meridian, and I re-established said corner according to the Wisconsin Statutes as shown and described hereon.

Dated this 9 day of July 19 76

Harley A. Sime  
 COUNTY SURVEYOR  
 Title

History of original corner establishment:

Description of corner evidence found:

I accepted the stone and fence corner at the SE corner of Sec. 36 and the existing fence corner at the SW corner of Sec. 36. The North-South fence at this corner is in good condition and it's computed bearing matched well with the East and West section lines. The corner was placed at the intersection on the computed fence line bearing and a straight line between the SE and SW section corners.

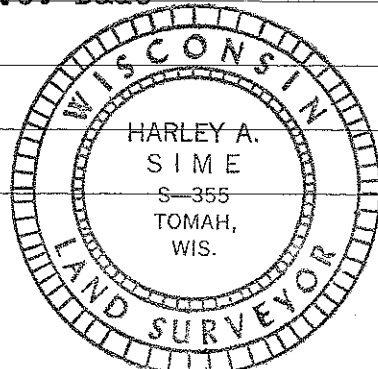
COUNTY SURVEYOR FORM NO. 1

Description of corner and witness monuments, references and accessories used to perpetuate the original or re-established location of this corner:

Witnesses to corner location:

Darius J. Malliet  
 D.J. Malliet, Crew chief, R.L.S.

D.C. Dade



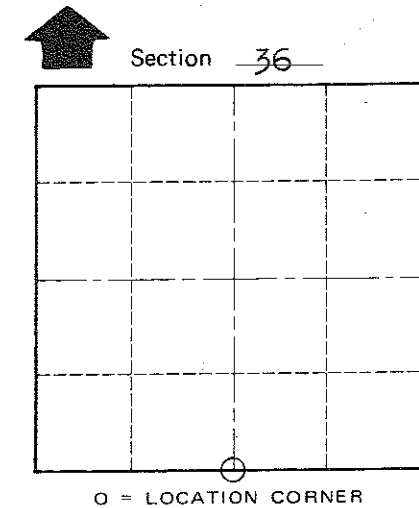
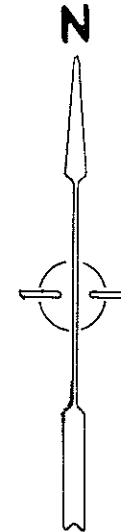
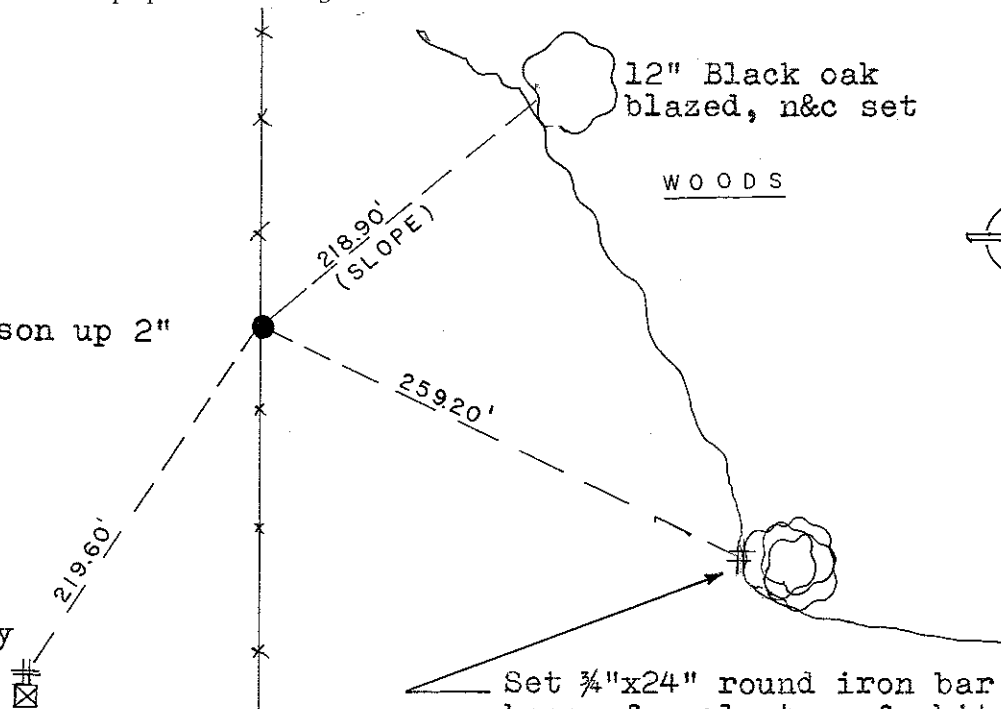
SURVEY CONTROL ORDER

Horizontal	_____
Vertical	_____

Set iron monument 1'± North of utility box

Set Harrison up 2" in fence

WISCONSIN COORDINATE SYSTEM



Corner	East (X)	North (Y)	Elevation (Z)	Zone
Control Sta. Name				

City, Village or Town of Sparta  
 County of Monroe