

CERTIFICATE

CERTIFIED LAND CORNER

No. 124

21704350020

I, Harley A. Sime, do hereby certify that on the 30 day of June 1976, I found ~~(evidence)~~ (no evidence) of the S 1/4 corner of Sec. 35, T 17N, R 4 W, Fourth Principal Meridian, and I re-established said corner according to the Wisconsin Statutes as shown and described hereon.

Dated this 13 day of July 1976.

Harley A. Sime
County Surveyor
Title

History of original corner establishment:

Fred Holden set a stake at this corner in March 1903; and in Nov. 1909 he again visited this corner and set a iron rod.

Description of corner evidence found:

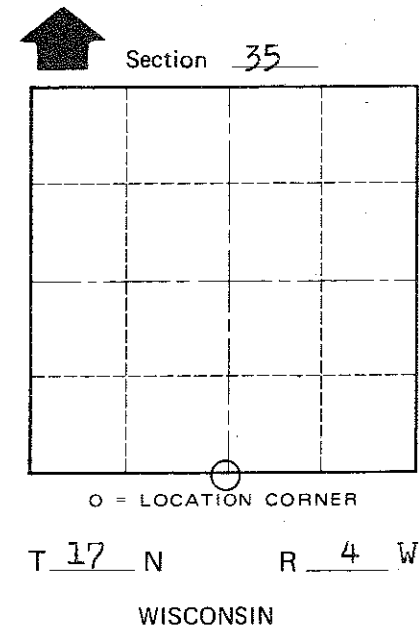
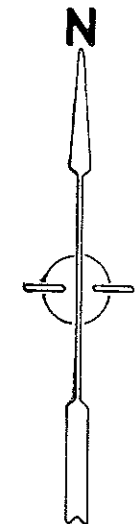
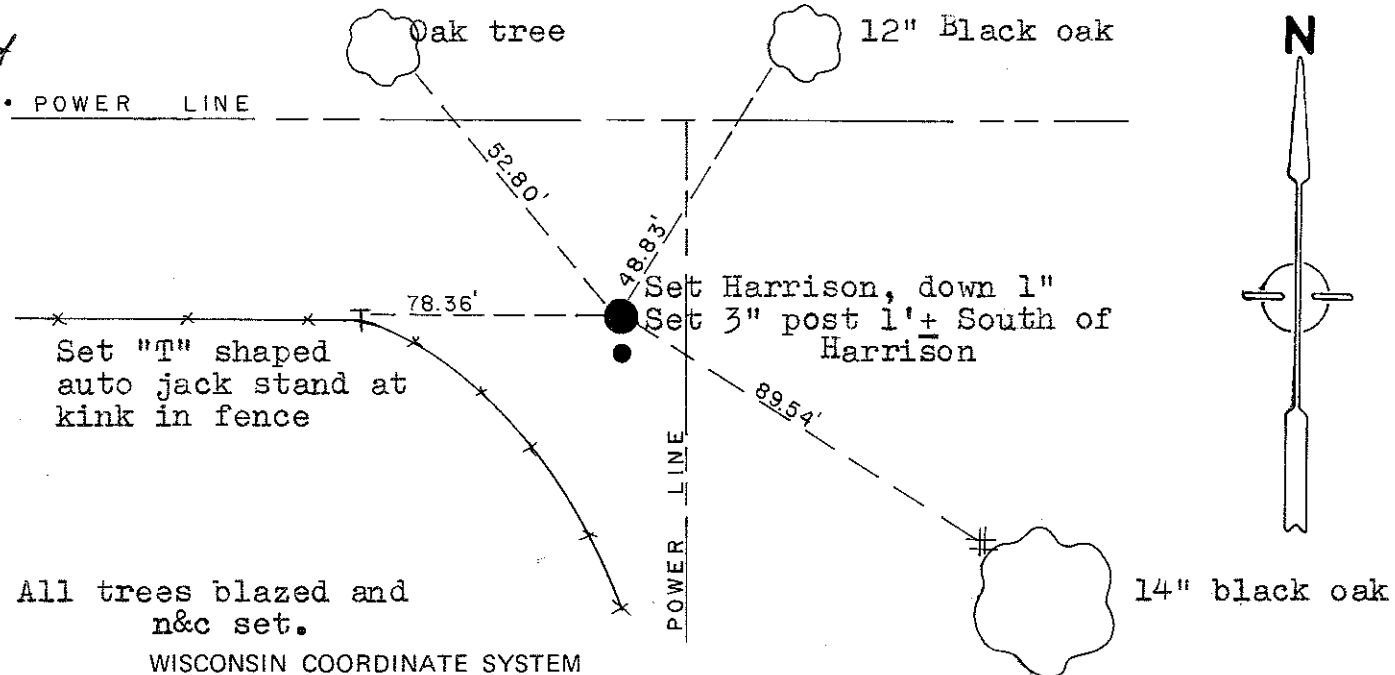
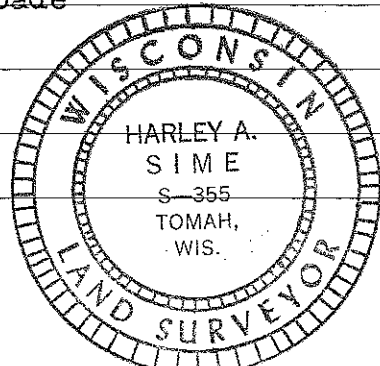
Did not find the iron rod on record. This corner was computed to be set proportionately, using record, field and computed distances for the 1/2 mile to the North and South. This computed location fit the existing fence fairly well even though this fence takes off to the South in it's alignment coming from the West.

See back of sheet for computations.

Description of corner and witness monuments, references and accessories used to perpetuate the original or re-established location of this corner:

Witnesses to corner location:

Douglas J. Malliet
D.J. Malliet, Crew chief, R.L.S.
D.C. Dade



COUNTY SURVEYOR FORM NO. 1

SURVEY CONTROL ORDER

Horizontal	_____
Vertical	_____

Corner	East (X)	North (Y)	Elevation (Z)	Zone
Control Sta. Name				

City, Village or Town of Sparta

County of Monroe