

CERTIFICATE

CERTIFIED LAND CORNER

No. 126

21704340020

I, Harley A. Sime do hereby certify that on the 15 day of June 1976, I found ~~(evidence)~~ (no evidence) of the S¹/₄ corner of Sec. 34, T 17 N, R 4 W, Fourth Principal Meridian, and I re-established said corner according to the Wisconsin Statutes as shown and described hereon.

Dated this 13 day of July 19 76.

Harley A. Sime
County Surveyor
Title

History of original corner establishment:

Description of corner evidence found:

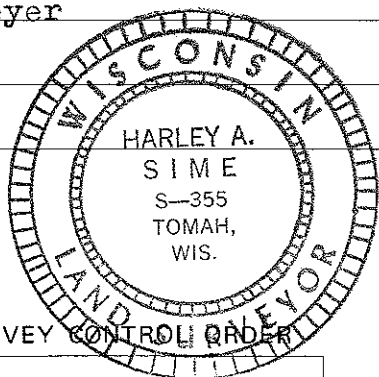
I accepted the position of the section corners to the East and West and the existing North-South fence and it's computed bearing. Placing the corner on line and equidistant between the corners would not agree with the North-South fence. Placing the corner on a straight line between the section corners and at it's intersection with the North-South fence, agreed with the existing field conditions very well.

COUNTY SURVEYOR FORM NO. 1

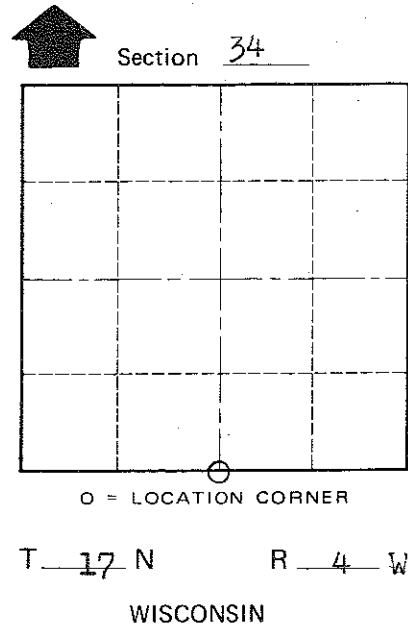
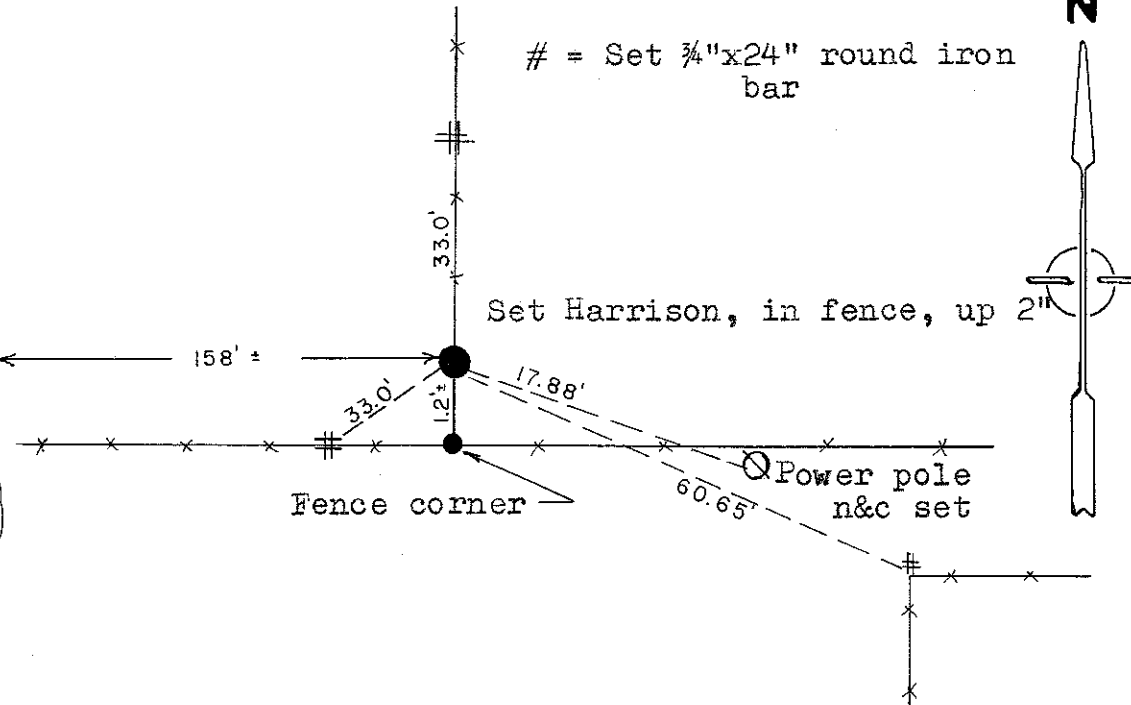
Description of corner and witness monuments, references and accessories used to perpetuate the original or re-established location of this corner:

Witnesses to corner location:

D.J. Malliet, Crew chief, R.L.S.
A.L. Lueck
B. Meyer



EAST EDGE OF LACROSSE RIVER



Horizontal	
Vertical	

WISCONSIN COORDINATE SYSTEM

Corner	East (X)	North (Y)	Elevation (Z)	Zone
Control Sta. Name				

City, Village or Town of Sparta

County of Monroe