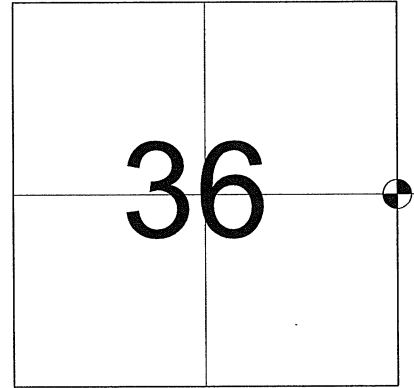


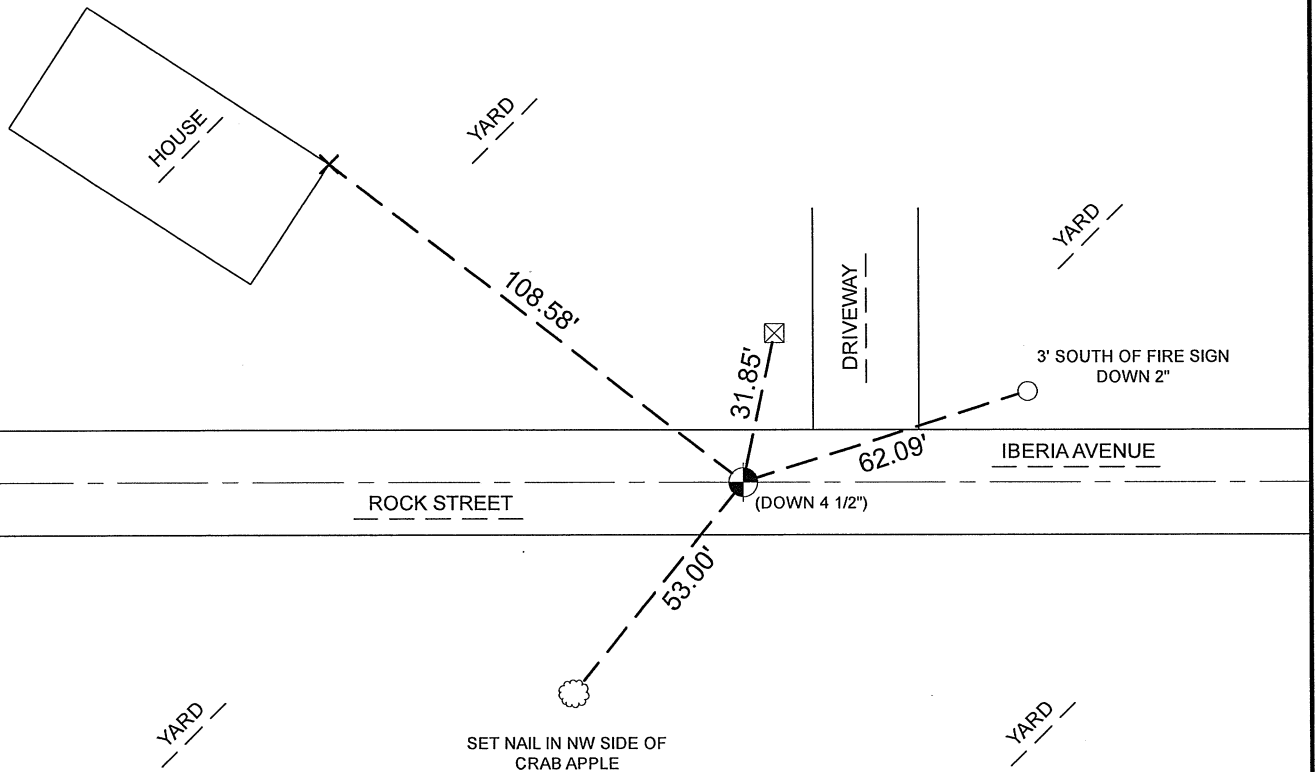
# MAINTENANCE- PUBLIC LAND SURVEY MONUMENT RECORD

TIE SHEET UPDATE-21705362000 (LA CROSSE COUNTY INDEX 156H)



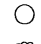


Pete Follansbee and I performed maintenance work on this corner on August 15, 2011. We found the Harrison marker of record at the corner in the centerline. We didn't find any of H. Sime's ties and established 4 new ties as shown below.

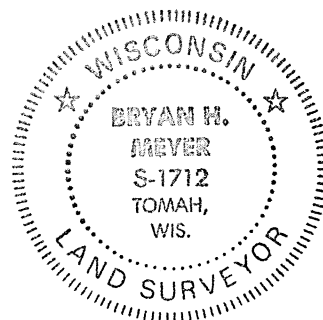


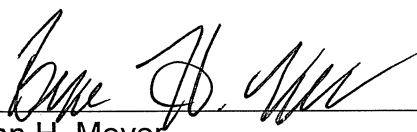
LOCATION OF LANDMARK



### LEGEND

-  HARRISON MARKER
-  GAS VALVE
-  SET 3/4"X24" IRON REBAR (1.50lbs/ft)
-  TREE AS DESCRIBED
-  CONCRETE FOUNDATION CORNER



  
Bryan H. Meyer  
La Crosse County Surveyor

10/5/2011  
Date

CORNER ID:  
21705362000

CERTIFICATE

CERTIFIED LAND CORNER

No. 114

**21705362000**

I, Harley A. Sime, do hereby certify that on the 22 day of October 1975, I found ~~(evidence)~~ (no evidence) of the W 1/4 corner of Section 31, T 17 N, R 4W, Fourth Principal Meridian, and I re-established said corner according to the Wisconsin Statutes as shown and described hereon.

Dated this 5 day of March 1976.

Harley A. Sime  
County Surveyor  
Title

History of original corner establishment:

Description of corner evidence found:

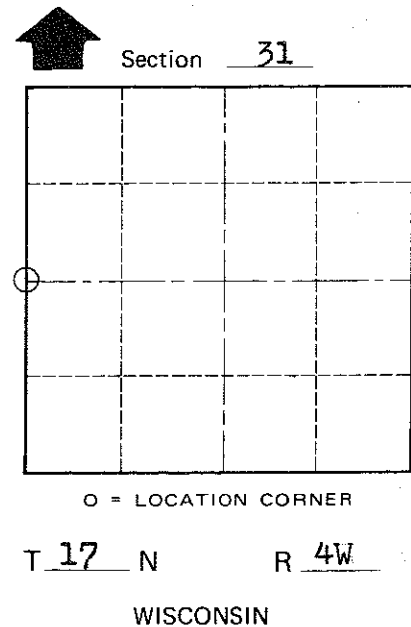
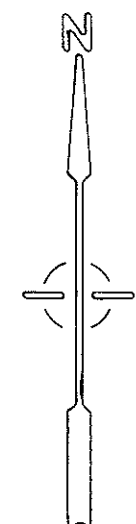
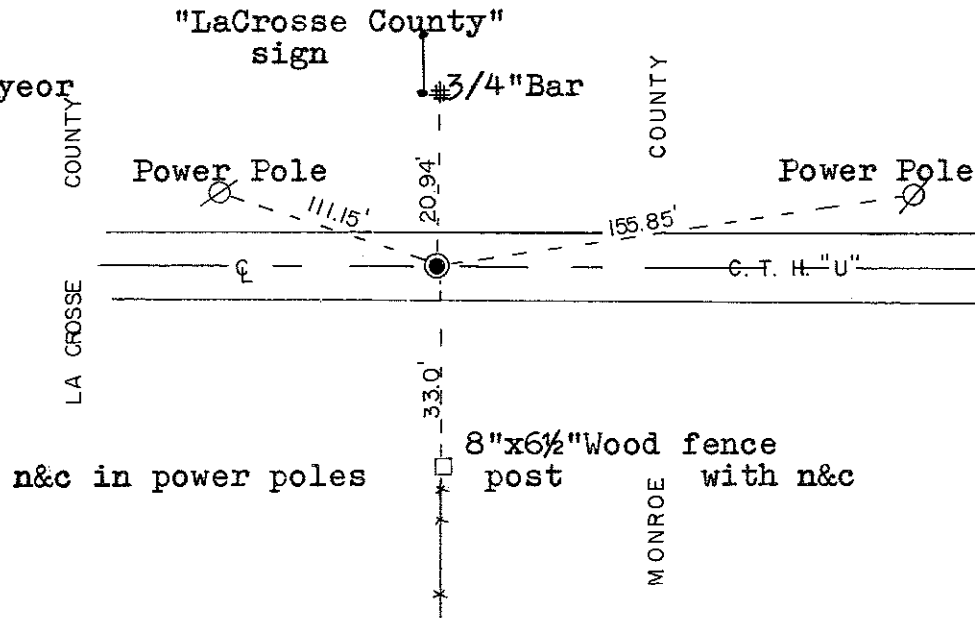
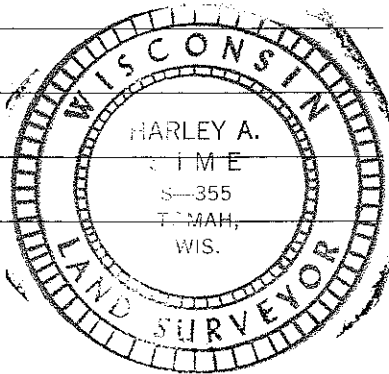
Accepted the existing field conditions. By the aerial photo, the centerline of the road at this location matched well with the quarterline fence to the East. The 1/2 mile distance to the C 1/4 corner, Sec. 36, T17N-R5W (existing 2" iron pipe) fit reasonably well. The North-South fence at the corner is in fair condition. I placed the corner at the intersection of the fence extended and the centerline of the road.

Description of corner and witness monuments, references and accessories used to perpetuate the original or re-established location of this corner:

Set Harrison monument, down 2"

Witnesses to corner location:

Douglas J. Malliet  
D.J. Malliet - Crew Chief, Reg. Surveyor  
A. Ineck



COUNTY SURVEYOR FORM NO. 1

SURVEY CONTROL ORDER

Horizontal	_____
Vertical	_____

WISCONSIN COORDINATE SYSTEM

Corner	East (X)	North (Y)	Elevation (Z)	Zone
Control Sta. Name				

City, Village or Town Sparta

County of Monroe