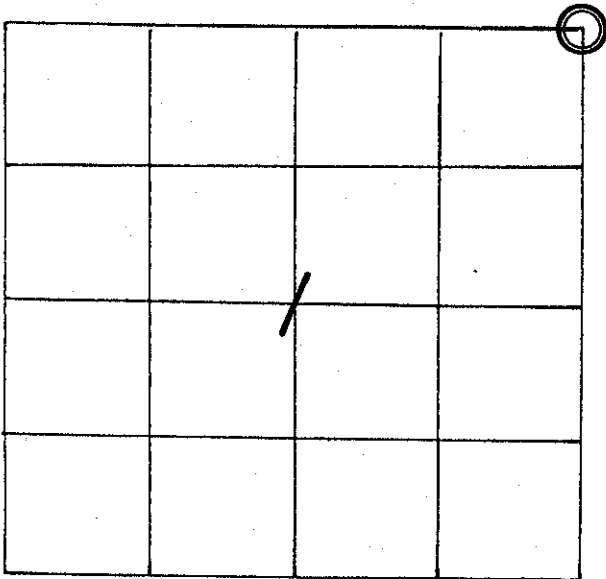


**2170536000**

U. S. PUBLIC LAND SURVEY MONUMENT RECORD

SECTION 1 T 16 N, R 5 W, TOWN OF BANGOR  
 LA CROSSE COUNTY



LOCATION OF LANDMARK

CREW: **WILLIAM C. JUNG**  
**PETER F. FOLLANSBEE**  
 DATE: **6/14/2005**

WISCONSIN COORDINATE SYSTEM	
North	693,549.144
East	1,728,625.215
Theta Angle	
Horiz. Order	
Vert. Order	
DATUM:	1983('91)
TYPE OF LANDMARK	
BOLT OVER HARRISON MARKER IN ROAD.	
BEARINGS ARE REFERENCED TO	
GRID NORTH AS PER SECTION DATA.	

Describe any record evidence, monument evidence, testimonial evidence or any other material evidence you considered and whether the monument was found or restored through acceptance of an obliterated evidence location.

Doug Malliet set a Harrison marker at this corner in 1975. The Harrison is now down 5" in the pavement. I set a bolt over the Harrison and took new ties. There are also four mag nail offsets, all set at 6". These nails were set by someone else.

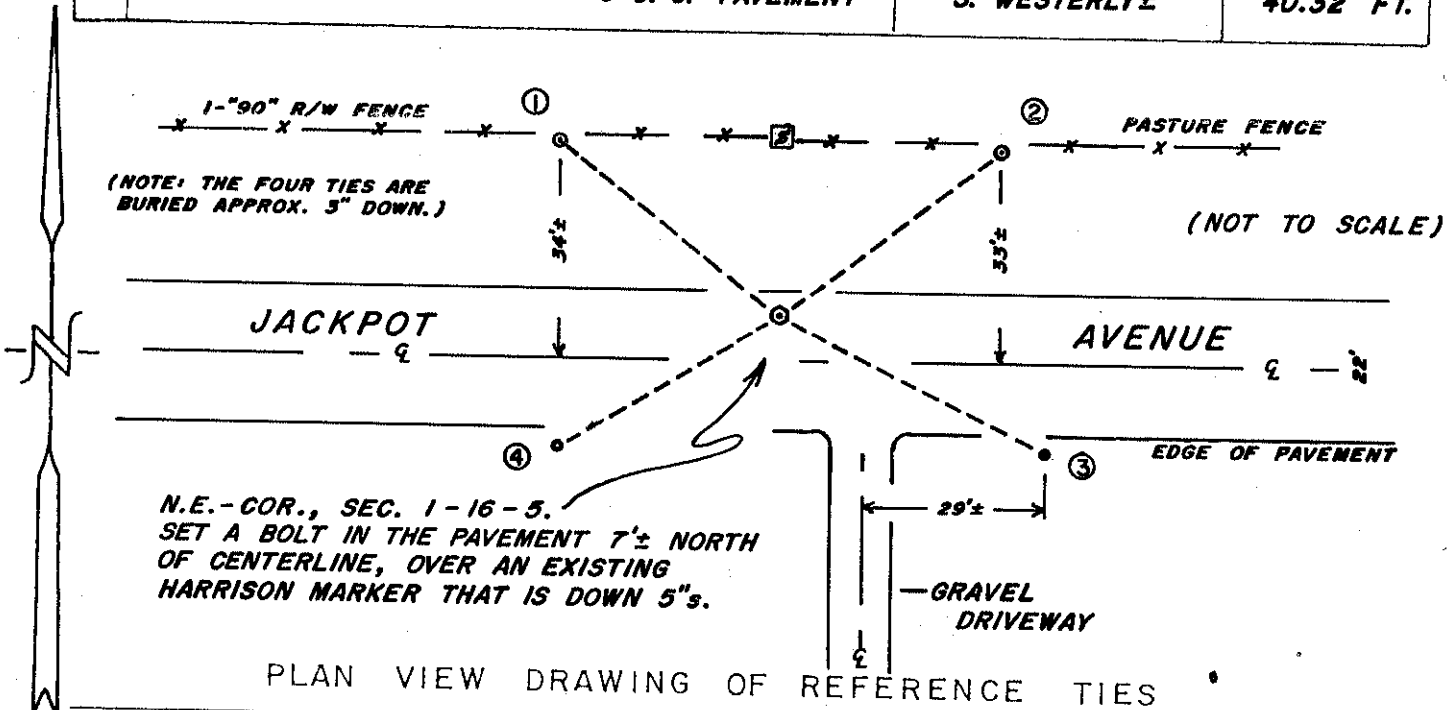
Describe or show any material discrepancy between the location of the restored corner and that of the corner previously restored or reestablished.

**NONE KNOWN.**

Pg 2  
 133  
 17-40  
 16-40

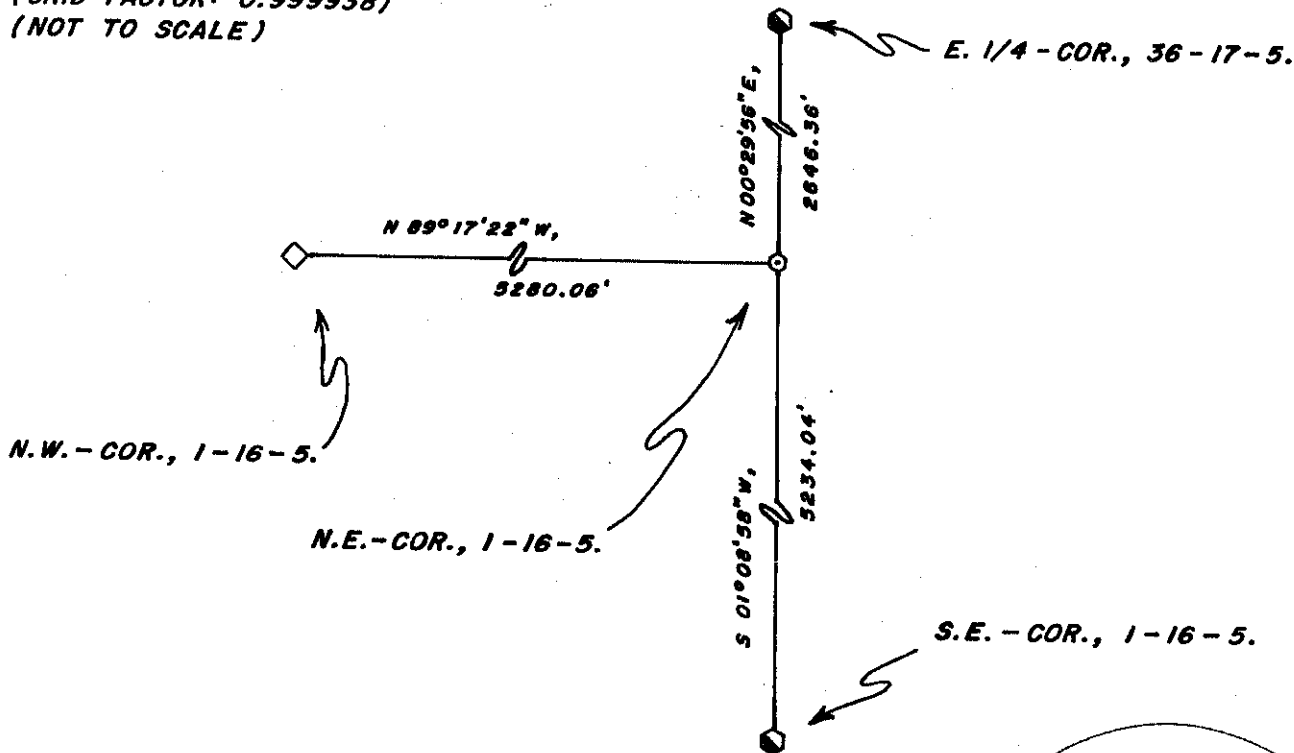
RECORD OF DURABLE WITNESS MONUMENTS

NO	DESCRIPTION	BEARING	DISTANCE
1	SET A 3/4"x30" I.BAR WITH RED CAP 20" S. OF FENCE	N.' WESTERLY ±	43.16 FT.
2	SET A 3/4"x30" I.BAR WITH RED CAP 20" S. OF FENCE	N.' EASTERLY ±	42.85 FT.
3	SET A 1/2"x36" REBAR 3' SOUTH OF EDGE OF PAVEMENT	S.' EASTERLY ±	47.42 FT.
4	SET A 1/2"x26" ICE SPUD SHAFT 3' S. OF PAVEMENT	S.' WESTERLY ±	40.32 FT.



MAP SHOWING DISTANCE AND DIRECTION TO OTHER PUBLIC LAND SURVEY CORNERS USED FOR REESTABLISHING THE CORNER

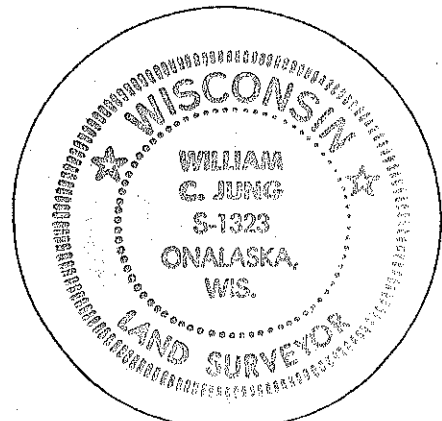
(GRID BEARINGS AND DISTANCES)  
(GRID FACTOR: 0.999938)  
(NOT TO SCALE)



I, WILLIAM C. JUNG, COUNTY SURVEYOR  
HEREBY CERTIFY THAT THE CORNER LOCATION SHOWN ON THIS RECORD WAS DETERMINED BY ME OR UNDER MY DIRECTION AND CONTROL AND THAT THIS U. S. PUBLIC LAND SURVEY MONUMENT RECORD IS CORRECT AND COMPLETE TO THE BEST OF MY KNOWLEDGE AND BELIEF.

William C. Jung  
Signature

11/18/05  
Date



CERTIFICATE

CERTIFIED LAND CORNER

No. 133

I, Harley A. Sime, do hereby certify that on the 22 day of October 1975, I found (evidence) (no evidence) of the S W corner of Section 31, T17 N, R4W Fourth Principal Meridian, and I re-established said corner according to the Wisconsin Statutes as shown and described hereon.

Dated this 5 day of March 1976.

Harley A. Sime  
County Surveyor  
Title

History of original corner establishment:

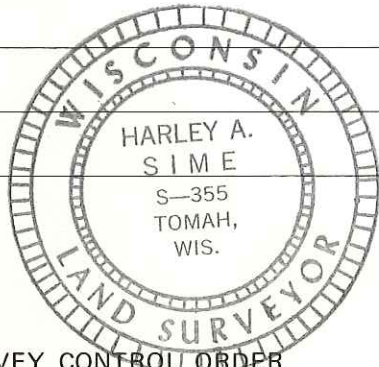
Description of corner evidence found: The direction to the partial fence extending south from the W<sup>1</sup>/<sub>4</sub> corner of Sec. 31 matched fairly well with the direction of the fence extending North from the W<sup>1</sup>/<sub>4</sub> corner, Sec. 6, T16N-R4W. However, it is difficult to determine the North-South location to the South line of the section from the general winding route of the existing town road. By doubling the length of the west line of the NW<sup>1</sup>/<sub>4</sub>, and extending the bearing of the same south to the SW corner, the corner fell within the traveled way; the bearing of the south line of the section matched the bearing of the north line; and the length of the south line nearly matches the record distance exactly.

Description of corner and witness monuments, references and accessories used to perpetuate the original or re-established location of this corner:

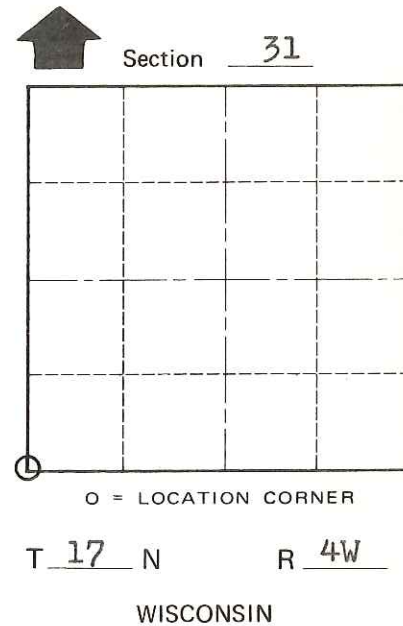
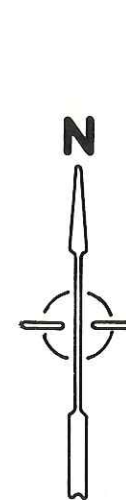
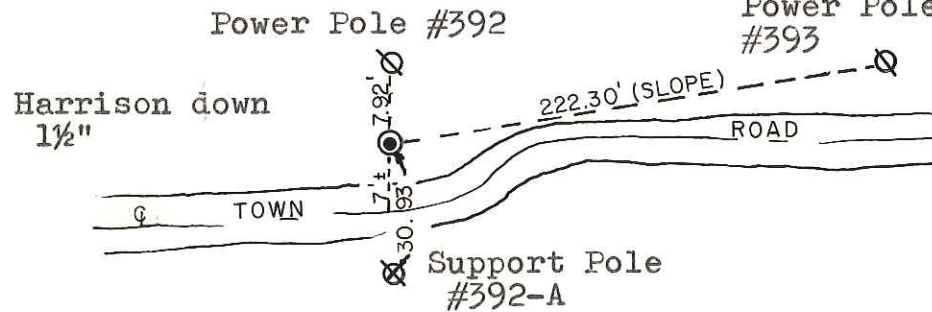
Witnesses to corner location:

Douglas J. Malliet  
Douglas J. Malliet - Reg. Surveyor

A. Ineck



n&c in ~~####~~ Poles



COUNTY SURVEYOR FORM NO. 1

SURVEY CONTROL ORDER

Horizontal \_\_\_\_\_  
Vertical \_\_\_\_\_

WISCONSIN COORDINATE SYSTEM

Corner	East (X)	North (Y)	Elevation (Z)	Zone
Control Sta. Name				

City, Village or Town Sparta

County of Monroe