

US PUBLIC LAND SURVEY MONUMENT RECORD-ADDENDUM

2018-30

TIE SHEET ADDENDUM-21705252000 (LA CROSSE COUNTY INDEX 130H)

SECTION 25 T. 17 N., R. 5 W.

TOWN OF BURNS

LA CROSSE COUNTY, WI.

WISCONSIN COORDINATE SYSTEM

DATUM: SPC- WI SOUTH NAD83(91)

NORTH: 701,476.652'

EAST: 1,728,646.114'

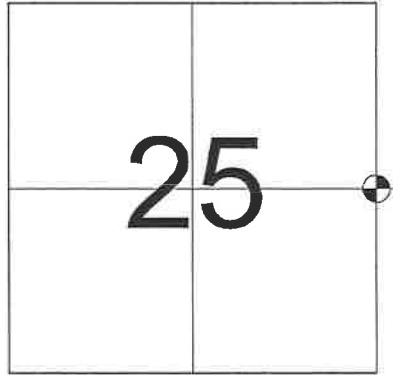
ELEVATION: 763.32'

TYPE OF MONUMENT: HARRISON MARKER

CREW: BRYAN MEYER, COREY HUGHES

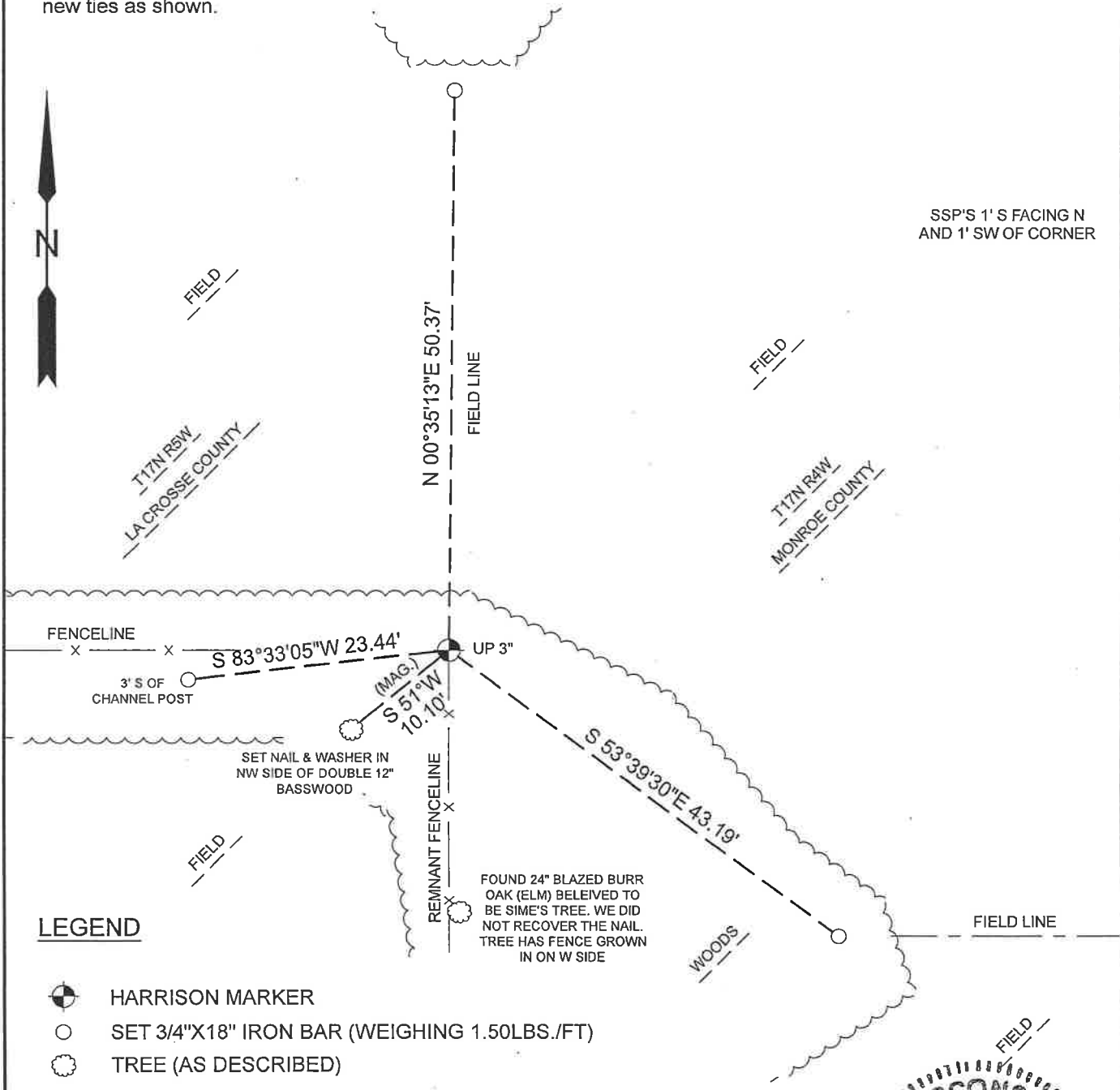
DATE: JUNE 12, 2018

WEATHER: CLOUDY 75°



LOCATION OF LANDMARK

Bryan Meyer and I performed maintenance on this corner on June 12, 2018. We found the Harrison marker of record at the corner at a fence intersection. We found 1 of H. Sime's ties still standing and established 4 new ties as shown.



LEGEND

- HARRISON MARKER
- SET 3/4"X18" IRON BAR (WEIGHING 1.50LBS./FT)
- TREE (AS DESCRIBED)

Corey M Hughes
 Corey M. Hughes S-3147

7-30-2018
 Date



I, Corey M. Hughes, hereby certify that the corner location shown on this record was determined by me or under my direction and control and that this U.S. Public Land Survey Monument Record Addendum is correct and complete to the best of my knowledge and belief.

CORNER ID:
 21705252000

CERTIFICATE

CERTIFIED LAND CORNER

No. 94

21705252000

I, Harley A. Sime, do hereby certify that on the 25 day of September 19 75, I found (evidence) (no evidence) of the W¹/₄ corner of Sec. 30, T 17 N, R 4 W, Fourth Principal Meridian, and I re-established said corner according to the Wisconsin Statutes as shown and described hereon.

Dated this 5 day of March 19 76.

Harley A. Sime

COUNTY SURVEYOR

Title

History of original corner establishment:

Description of corner evidence found:

Accepted the existing field conditions, a strong 4-way fence corner as the best available field evidence. This location matched the remainder to the section well.

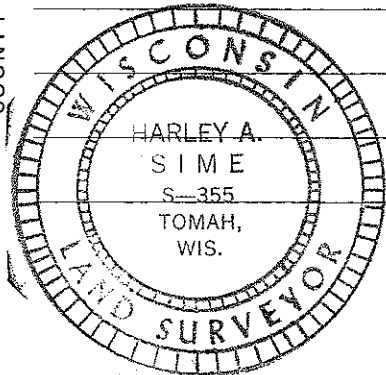
Description of corner and witness monuments, references and accessories used to perpetuate the original or re-established location of this corner:

Set Harrison, up 3"

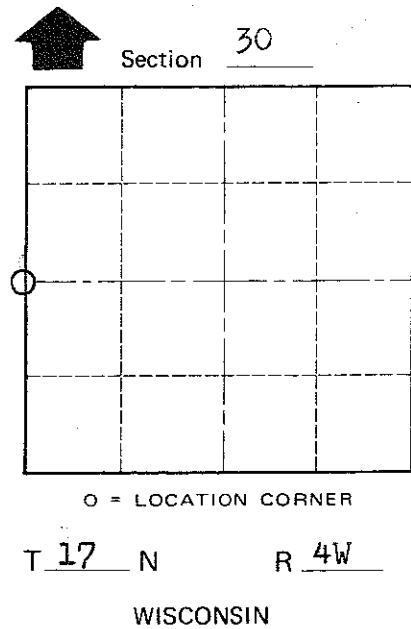
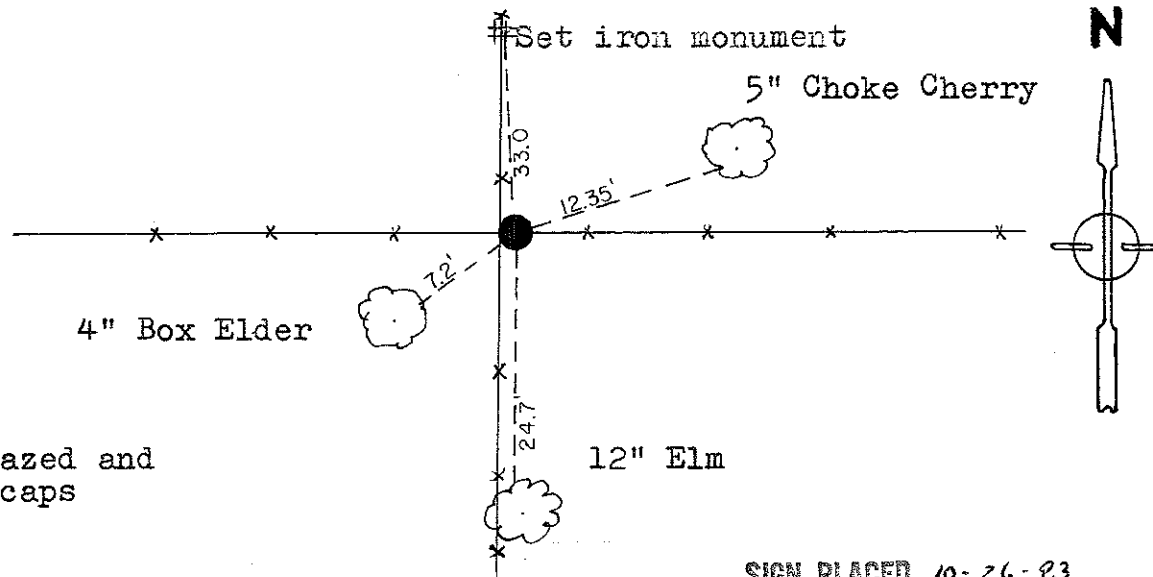
Witnesses to corner location:

Douglas A. Malliet
D. J. Malliet - Crew Chief RLS

A. Lueck



NOTE: All trees blazed and with nail & caps



SIGN PLACED 10-26-93

COUNTY SURVEYOR FORM NO. 1

SURVEY CONTROL ORDER

Horizontal _____
Vertical _____

WISCONSIN COORDINATE SYSTEM

Corner	East (X)	North (Y)	Elevation (Z)	Zone
Control Sta. Name				

City, Village or Town Sparta

County of Monroe