

CERTIFICATE

CERTIFIED LAND CORNER

No. 125

21704340000

I, Harley A. Sime do hereby certify that on the 15 day of June 1976, I found (evidence) (~~no evidence~~) of the SE corner of Sec. 34, T 17 N, R 4 W, Fourth Principal Meridian, and I re-established said corner according to the Wisconsin Statutes as shown and described hereon.

History of original corner establishment:

Fred Holden visited this corner 23-24 Nov. 1909.

Description of corner evidence found:

I found a PK nail at this location, but could not find any record of it. It agreed well with centerline of old "27", the existing East-West section fence, and the highway commission's ties to this corner from their map. I accepted the location of the PK nail.

Dated this 9 day of July 1976.

Harley A. Sime

COUNTY SURVEYOR
Title

Description of corner and witness monuments, references and accessories used to perpetuate the original or re-established location of this corner:

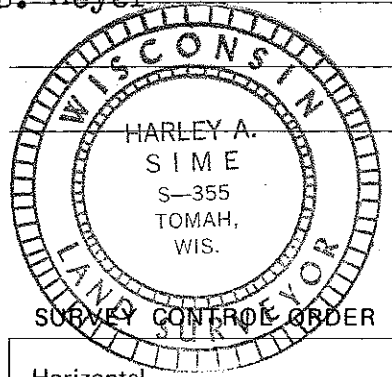
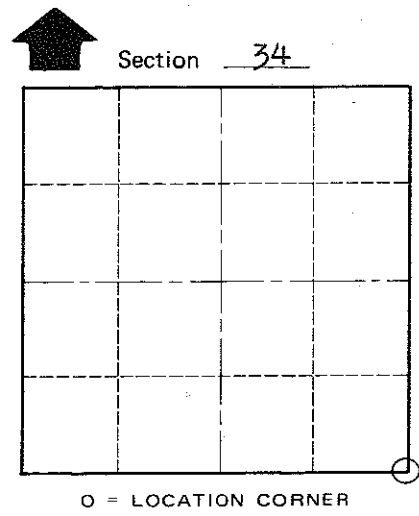
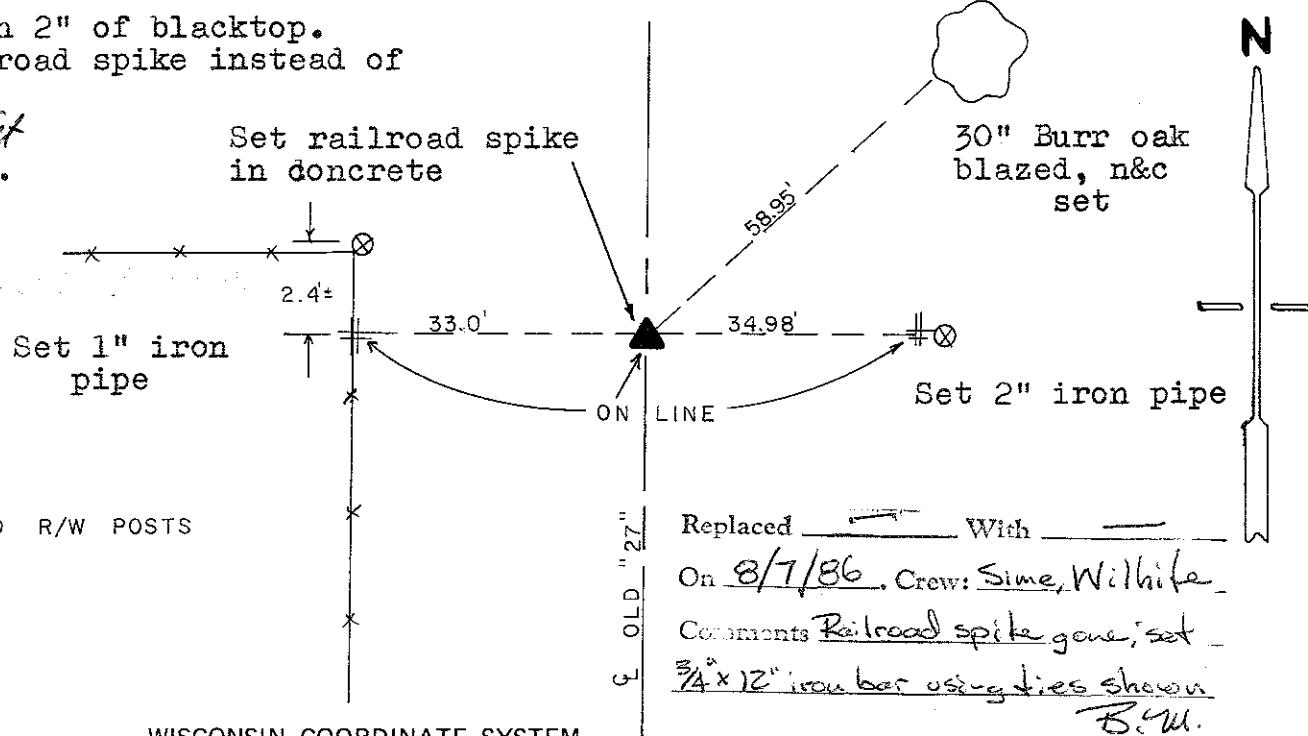
There is concrete lying beneath 2" of blacktop. It was decided to place a railroad spike instead of a Harrison.

Witnesses to corner location:

Douglas J. Malliet
D.J. Malliet, Crew chief, R.L.S.

A.L. Lueck

B. Meyer



⊗ = WOOD R/W POSTS

Replaced With
On 8/7/86. Crew: Sime, Wilhite
Comments Railroad spike gone, set 3/4 x 12 inch iron bar using ties shown B.M.

Horizontal	_____
Vertical	_____

WISCONSIN COORDINATE SYSTEM

Corner	East (X)	North (Y)	Elevation (Z)	Zone
Control Sta. Name				

City, Village or Town of Sparta

County of Monroe

COUNTY SURVEYOR FORM NO. 1