

I, Harley A. Sime, do hereby certify that on the 14 day of June 19 76, I found ~~no evidence~~ (no evidence) of the E/4 corner of Sec. 33, T 17 N, R 4 W Fourth Principal Meridian, and I re-established said corner according to the Wisconsin Statutes as shown and described hereon.

Dated this 9 day of July 1976.

[Signature]

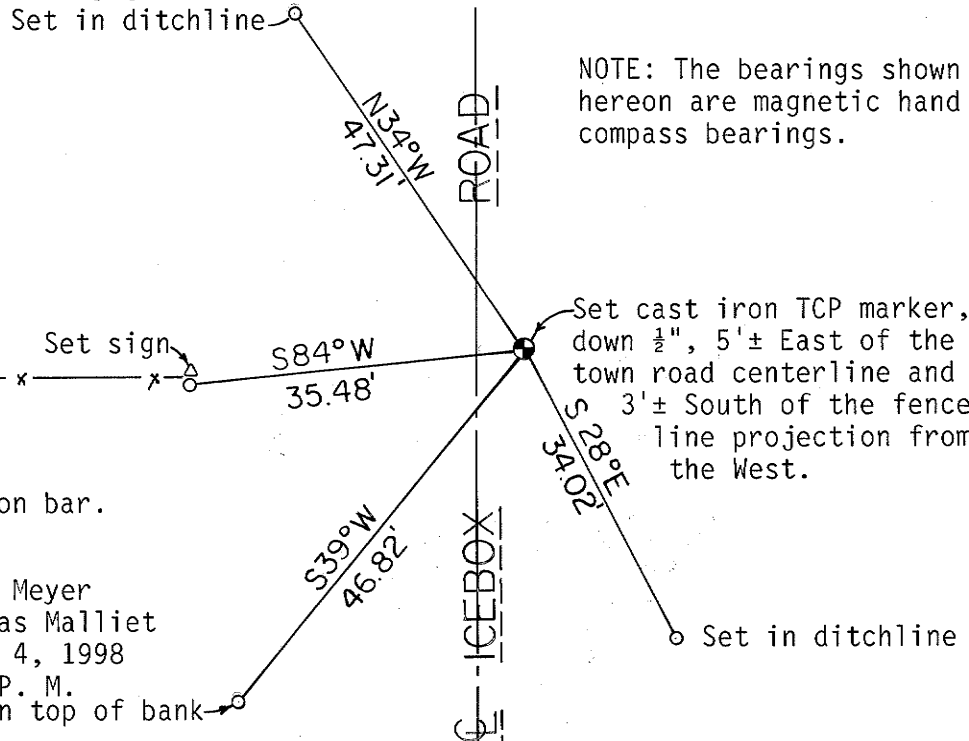
COUNTY SURVEYOR
Title

History of original corner establishment:

Description of corner evidence found:
Accepted the existing field conditions as the best available evidence. The distance between the section corners to the North & South is nearly a mile. By splitting the distance and placing the corner on line between the section corners, it matched the existing conditions well and agreed with the rest of the section.

UPDATE: While performing work to the Southwest, I found the ties to this corner were gone. I also found a railroad spike where the Harrison should be! The railroad spike fit the corner location exactly so I replaced it with a True Cast Products (TCP) marker. While digging to set the TCP, I found the bottom portion of the old Harrison. I removed this portion and set the TCP. Established new ties as shown below.

Description of corner and witness monuments, references and accessories used to perpetuate the original or re-established location of this corner:



NOTE: The bearings shown hereon are magnetic hand compass bearings.

o = Set 3/4" x 24" round iron bar.

1998 UPDATE CREW: Bryan Meyer
Douglas Malliet
March 4, 1998
2:30 P. M.
Set on top of bank

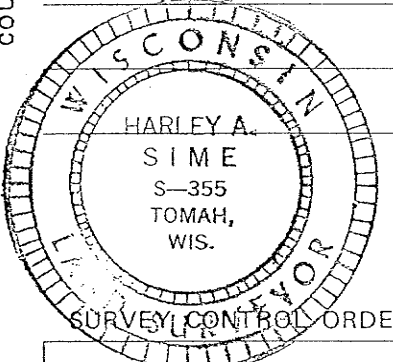
[Signature]

COUNTY SURVEYOR FORM NO. 1

Witnesses to corner location:
D. J. Malliet, Crew chief, R.L.S.

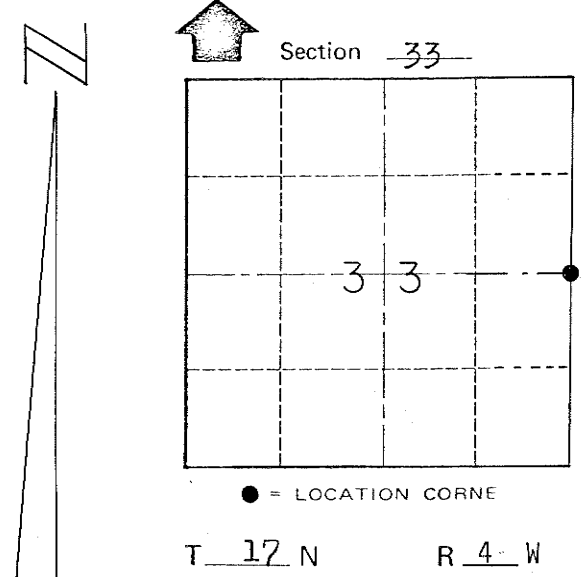
A. L. Eueck

B. Meyer



SURVEY CONTROL ORDER
Horizontal _____
Vertical _____

Corner	East (X)	North (Y)	Elevation (Z)	Zone
Control Sta. Name				



H. A. Sime and Associates
P. O. Box 50
Tomah, Wisconsin 54660
Phone: (608)-372-5392

~~City, Village~~ Town of Sparta

County of Monroe

Reference file number 4565