

CERTIFICATE

CERTIFIED LAND CORNER

No. 7

21704330000

I, William C. Jung, do hereby certify that on the 1st day of July 1975, I found (evidence) (~~no evidence~~) of the NW corner of Section 3, T16 N, R 4 W, Fourth Principal Meridian, and I re-established said corner according to the Wisconsin Statutes as shown and described hereon.

History of original corner establishment:

No known history recorded since the original survey.

Description of corner evidence found:

Found 3/4" iron bar, corner on record, removed bar and set Harrison Monument.



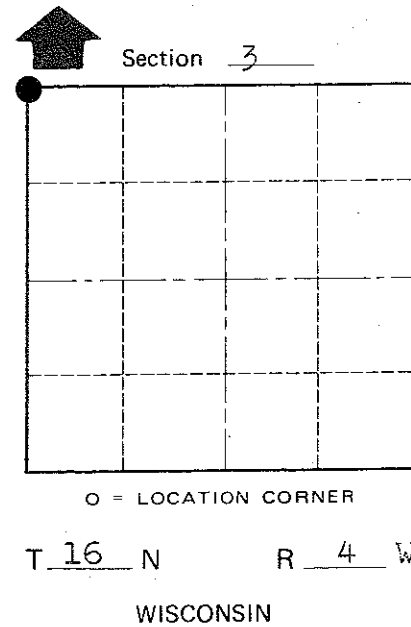
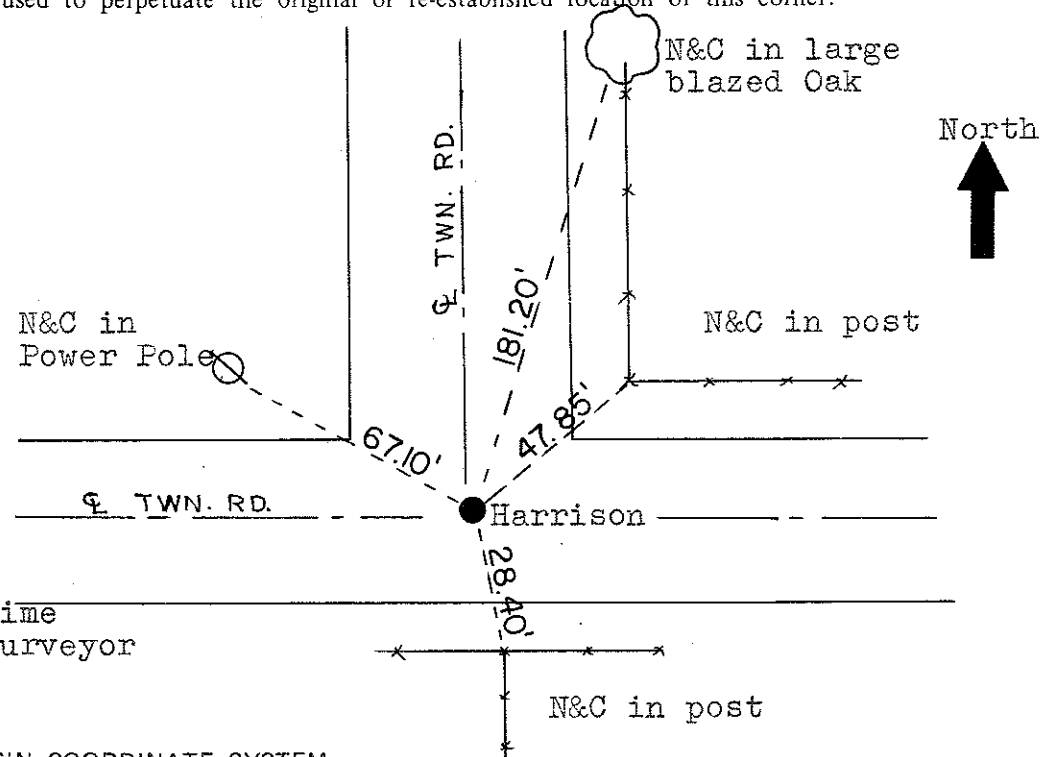
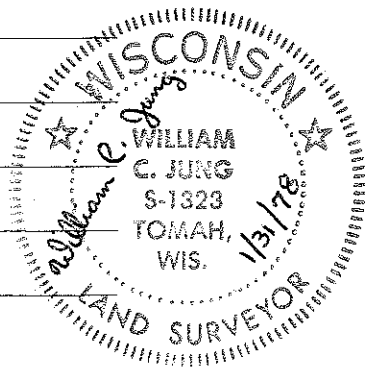
Dated this 5th day of Dec. 1977.

William C. Jung, R.L.S. 1323
Crew Chief, County Surveyor's Office

Description of corner and witness monuments, references and accessories used to perpetuate the original or re-established location of this corner:

Removed 3/4" iron bar, Set Harrison down 1" in road intersection.
Witnesses to corner location:

- W. Jung
- G. Dechant
- D. Dade
- D. Malliet
- T. Jeatran, A. Lueck



Approved: Harley Sime
County Surveyor

SURVEY CONTROL ORDER

Horizontal	_____
Vertical	_____

WISCONSIN COORDINATE SYSTEM

Corner	East (X)	North (Y)	Elevation (Z)	Zone
Control Sta. Name				

City, Village or Town Leon
County of Monroe

COUNTY SURVEYOR FORM NO. 1

O.K.