

CERTIFICATE

I, Harley A. Sime, do hereby certify that on the 16 day of June 19 76, I found ~~(evidence)~~ (no evidence) of the SE corner of Sec. 32, T 17 N, R 4 W, Fourth Principal Meridian, and I re-established said corner according to the Wisconsin Statutes as shown and described hereon.

Dated this 9 day of July 19 76.

Harley A. Sime
 COUNTY SURVEYOR
 Title

CERTIFIED LAND CORNER

No. 129

21704320000

History of original corner establishment:

Fred Holden set a stone with "+" at this corner 10-11 April 1902.

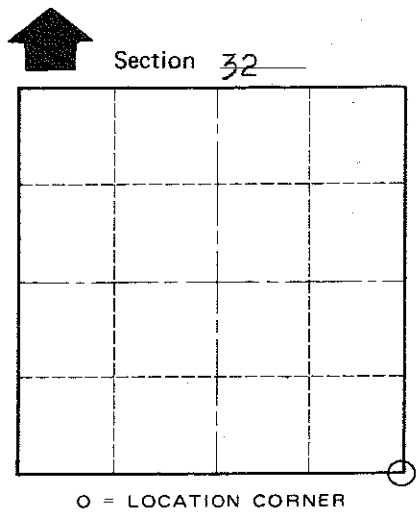
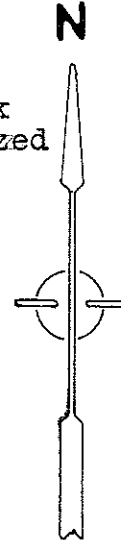
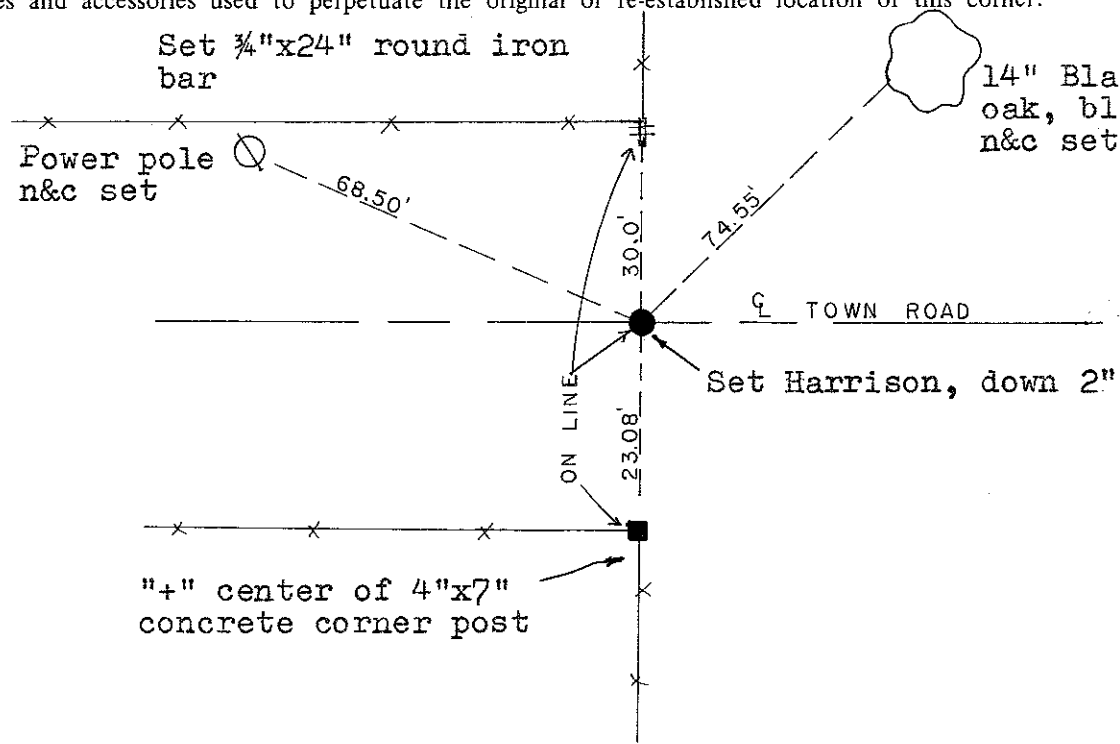
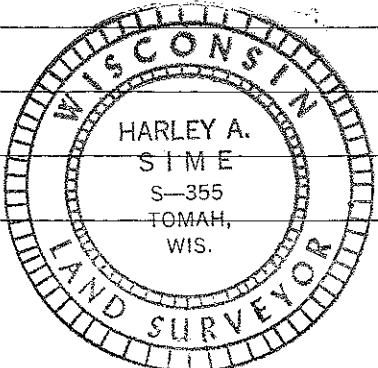
Description of corner evidence found:

Excavated for the stone on record at this location with a backhoe, but could not locate it. I talked to Mr. Waltermann and his son who said they were told that the stone had been dug up and then replaced with a grindstone when the town had regraded the roadway. I set the corner on line with the North-South fence and the centerline of the road, which is where the Waltermans said the corner was supposed to be.

COUNTY SURVEYOR FORM NO. 1

Description of corner and witness monuments, references and accessories used to perpetuate the original or re-established location of this corner:

Witnesses to corner location:
Douglas J. Malliet
 D.J. Malliet, Crew chief, R.L.S.
D.C. Dade



T 17 N R 4 W
 WISCONSIN

SURVEY CONTROL ORDER

Horizontal	_____
Vertical	_____

WISCONSIN COORDINATE SYSTEM

Corner	East (X)	North (Y)	Elevation (Z)	Zone
Control Sta. Name				

City, Village or Town of Sparta

County of Monroe