

**U.S. PUBLIC LAND CORNER
MAINTENANCE**

115

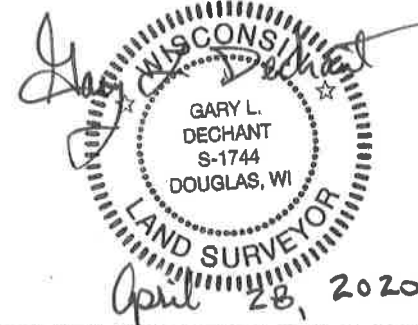
Corner ID: E1/4 Sec. 31, T17N-R4W
21704312000

<u>DATE</u>	<u>CREW</u>	<u>MONUMENT INFO</u>	<u>Compass Bearing</u>	<u>Distance</u>
April 24, 2020	Zachariah P. Dechant Gary L. Dechant	Existing 1/4" round iron bar REFERENCE MARKER , Actual corner falls 90.06 feet south in interstate 90. Iron bar is 2' north of I-90 r/w fence and 30' west of creek.		
1)	Set 3/4"x24" round iron bar		N30E	61.81'
2)	Set 3/4"x24" round iron bar, 6' north of r/w fence		N60E	56.69'
3)	Set 3/4"x24" round iron bar		S87W	39.31'
4)	Set 3/4"x24" round iron bar		N41W	77.16'

NE corner 31 to reference marker N0°28'02"W, 2554.14' (Malliet =2549.60') (Hurlburt = 2554.20')

NE corner 31 to actual corner E1/4 N0°28'02"W, 2644.20'

SE corner 31 to actual corner E1/4 N0°29'42"W, 2644.20'



I, Harley A. Sime, do hereby certify that on the 9 day of February 1976, I found ~~(evidence)~~ (no evidence) of the E/4 corner of Sec. 31, T 17 N, R 4 W, Fourth Principal Meridian, and I re-established said corner according to the Wisconsin Statutes as shown and described hereon.

Dated this 9 day of July 1976.

Harley A. Sime
 COUNTY SURVEYOR

History of original corner establishment:

Description of corner evidence found:

I established this corner location on line and Equidistant between the section corners to the North and South. The corner fell within the I-90 R/W. I then set one reference marker to the North of I-90 R/W.

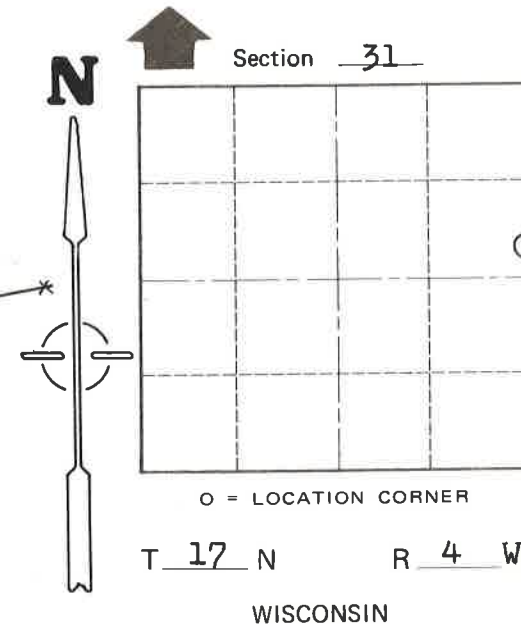
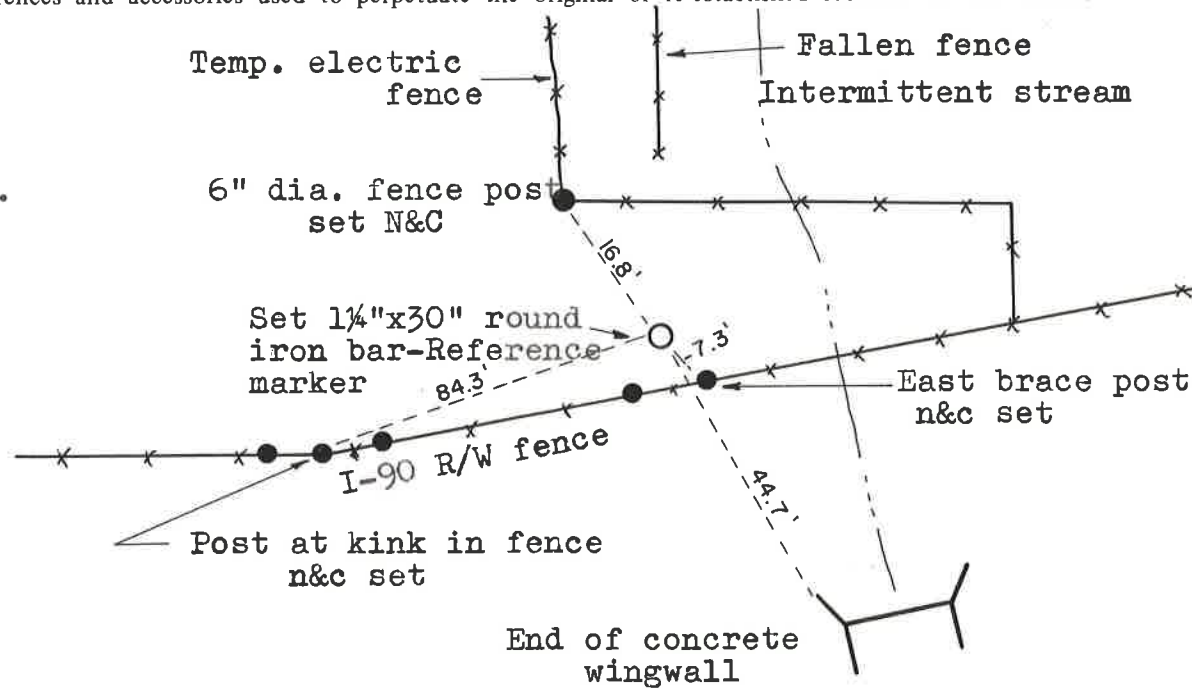
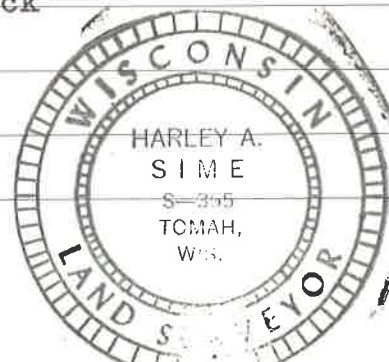
**See Reverse Side
For Maintenance**

Description of corner and witness monuments, references and accessories used to perpetuate the original or re-established location of this corner:

Witnesses to corner location:

D.J. Malliet, Crew chief, R.L.S.

A.L. Lueck



SURVEY CONTROL ORDER

Horizontal	_____
Vertical	_____

WISCONSIN COORDINATE SYSTEM

Corner	East (X)	North (Y)	Elevation (Z)	Zone
Control Sta. Name				

City, Village or Town of Sparta

County of Monroe

COUNTY SURVEYOR FORM NO. 1