

CERTIFICATE

CERTIFIED LAND CORNER

No. 132

21704310020

I, Harley A. Sime, do hereby certify that on the 3 day of February 19 76, I found ~~(evidence)~~ (no evidence) of the S¹/₄ corner of Sec. 31, T 17 N, R 4 W, Fourth Principal Meridian, and I re-established said corner according to the Wisconsin Statutes as shown and described hereon.

Dated this 8 day of July 19 76

Harley A. Sime

COUNTY SURVEYOR

Title

History of original corner establishment:

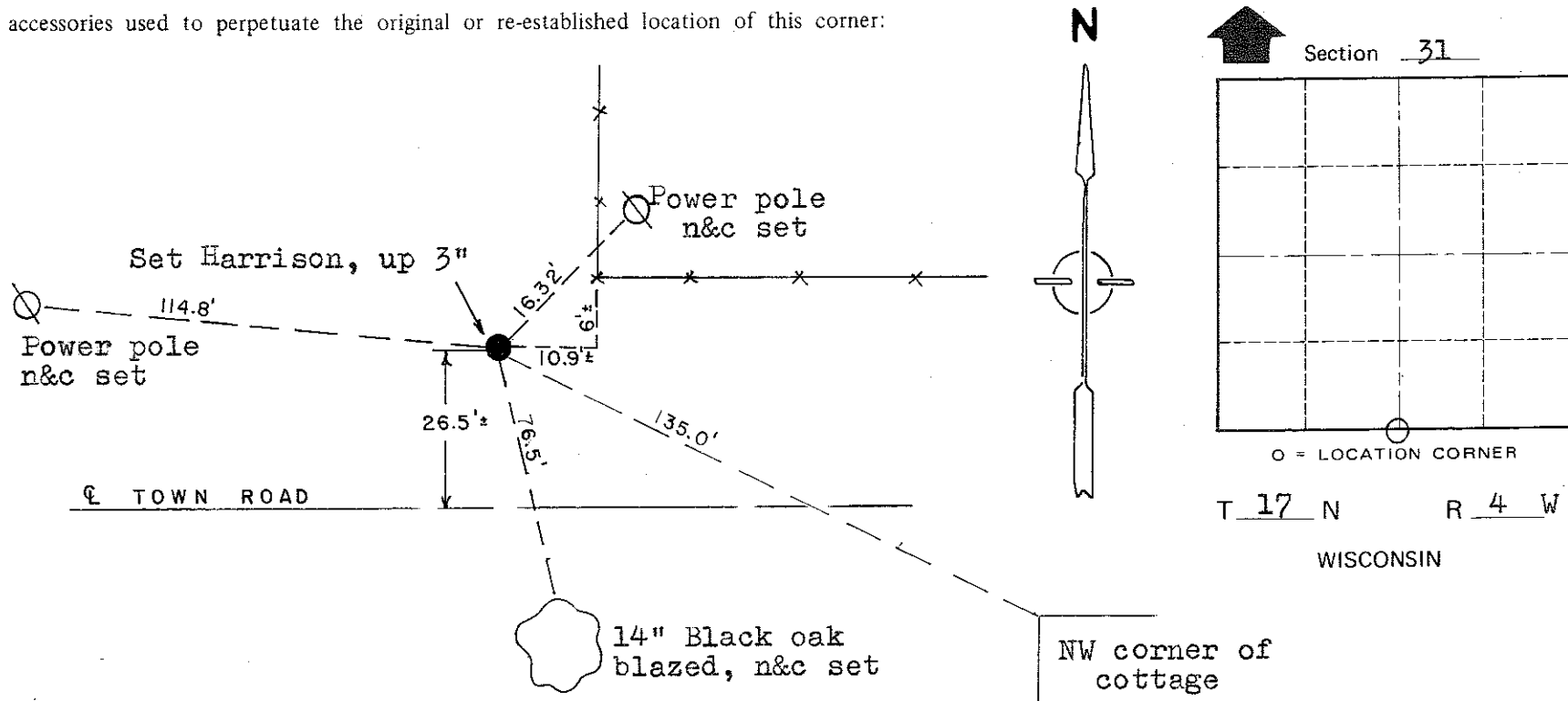
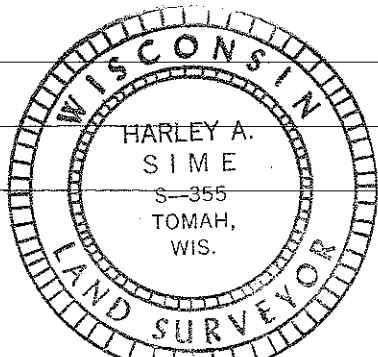
Description of corner evidence found:

It was difficult to determine whether the road actually followed the section line; by aerial photo it appears that it doesn't. In the field, the road meanders around several hills. The computed distance between the SE & SW corners of Sec. 31 was within a 0.01' of agreeing with the record distance. I set the corner on line and at a proportional between the section corners. This place the corner 11' $\frac{1}{2}$ West of the existing fence. I feel my data is strong enough to place the corner at my computed location.

Description of corner and witness monuments, references and accessories used to perpetuate the original or re-established location of this corner:

Witnesses to corner location: *Douglas G. Malliet*
D.J. Malliet, Crew chief, R.L.S.

A.L. Lueck



SURVEY CONTROL ORDER

Horizontal	_____
Vertical	_____

WISCONSIN COORDINATE SYSTEM

Corner	East (X)	North (Y)	Elevation (Z)	Zone
Control Sta. Name				

City, Village or Town of Sparta

County of Monroe

COUNTY SURVEYOR FORM NO. 1