

112

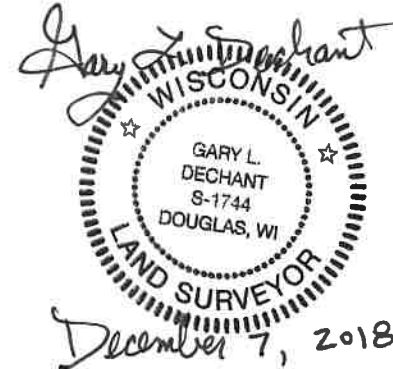
**U.S. PUBLIC LAND CORNER
MAINTENANCE**

**Corner ID : N1/4 Sec.31, T17N-R4W
21704300020**

<u>DATE</u>	<u>CREW</u>	<u>MONUMENT TYPE -----</u>
November 28, 2018	Zachariah P. Dechant Gary L. Dechant	Harrison intact, 16' south of center of Iberia Avenue.

<u>References:</u>	<u>Bearing</u>	<u>Distance</u>
1) Set 3/4"x24" round iron bar, down 4", 4' SW of double 6"-8" Black Oak	N20E	93.73
2) Set 3/4"x24" round iron bar, down 4"	S15E	29.70'
3) Set 3/4"x24" round iron bar, down 4", 6' east of clump (sextuplet) of 8" Box Elders	S20W	27.02'
4) Set 3/4"x24" round iron bar, down 4", 5' SE of 24" Black Oak	N15W	64.38'

Corner and reference markers set on straight lines.



I, Harley A. Sime, do hereby certify that on the 30 day of January 1976, I found ~~(evidence)~~ (no evidence) of the N¹/₄ corner of Sec. 31, T 17 N, R 4 W, Fourth Principal Meridian, and I re-established said corner according to the Wisconsin Statutes as shown and described hereon.

Dated this 9 day of July 1976.

Harley A. Sime
COUNTY SURVEYOR

History of original corner establishment:

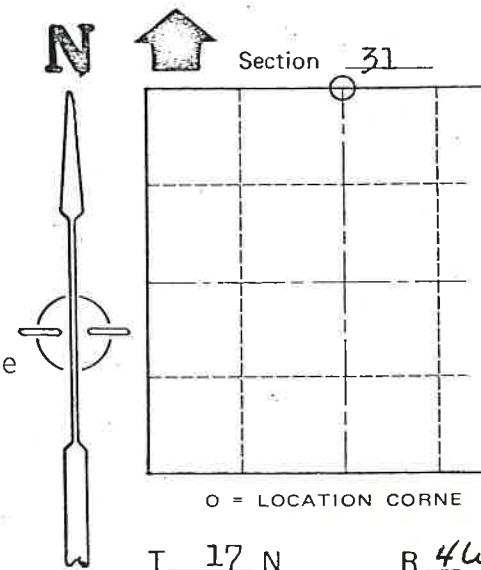
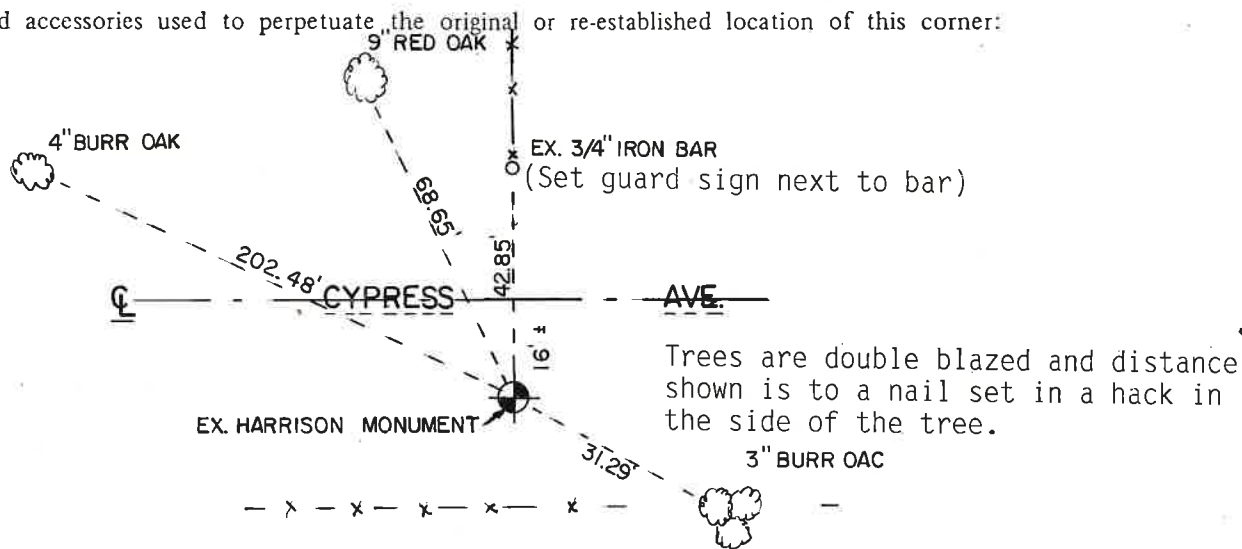
No History of corner location recorded since the Original Government Survey

Description of corner evidence found: The extension of the Section line fence East from the NW corner of Sec. 31 placed the line North of the road centerline. By the aerial photo, it looks like the line would fall south of the road centerline. The North-South fence at this corner is in good condition. The computed distance between the NW corner and the fence is 2631.05', matching the record closing distance very close. The computed distance between the fence and the NE corner is 2604.99', which was verified by field measurement of that 1/2 mile. I placed the corner at the intersection of the computed fence bearing and a straight line between the NE&NW corners. The bearing of the North line of the section closely paralleled the South line when the rest of the section was computed

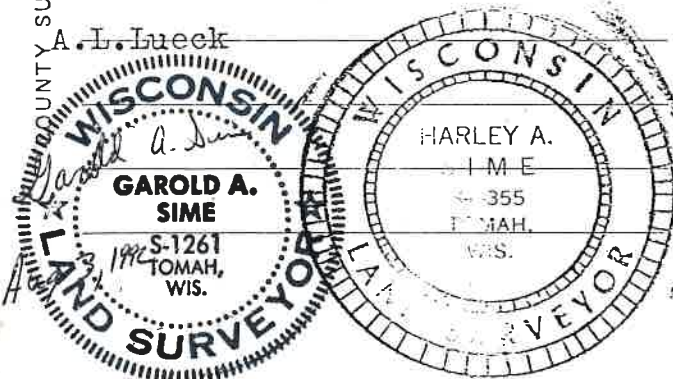
Description of corner and witness monuments, references and accessories used to perpetuate the original or re-established location of this corner:

Witnesses to corner location:

Douglas J. Malliet
D. J. Malliet, Crew chief, R.L.S.
A. L. Lueck



COUNTY SURVEYOR FORM NO. 1



Updated: August 3rd, 1992
Corner in good condition, obtained additional ties as shown above.
Crew: Garold A. Sime, R.L.S.
John Kenworthy
Brent Kostka

**See Reverse Side
For Maintenance**

SURVEY CONTROL ORDER

Horizontal _____
Vertical _____

WISCONSIN COORDINATE SYSTEM				
Corner	East (X)	North (Y)	Elevation (Z)	Zone
Control Sta. Name				

City, Village or Town of Sparta

County of Monroe

CERTIFICATE

I, Harley A. Sime, do hereby certify that on the 30 day of January 1976, I found ~~(evidence)~~ (no evidence) of the N¹/₄ corner of Sec. 31, T. 17 N, R. 4 W, Fourth Principal Meridian, and I re-established said corner according to the Wisconsin Statutes as shown and described hereon.

Dated this 9 day of July 1976.

Harley A. Sime
 COUNTY SURVEYOR

CERTIFIED LAND CORNER

History of original corner establishment:

**See Reverse Side
 For Maintenance**

No. 112

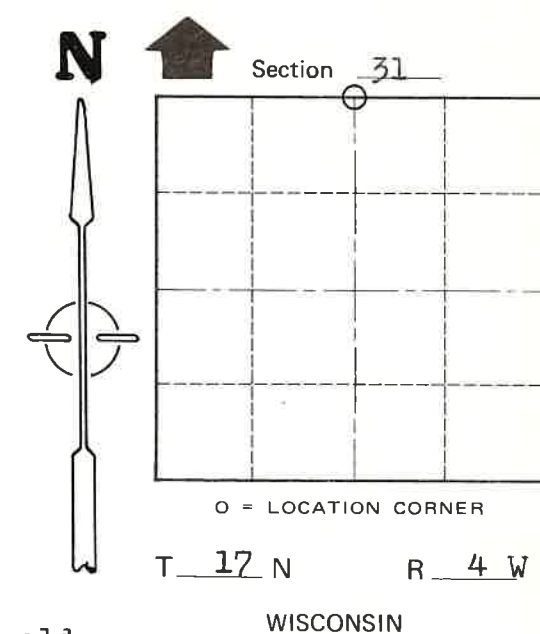
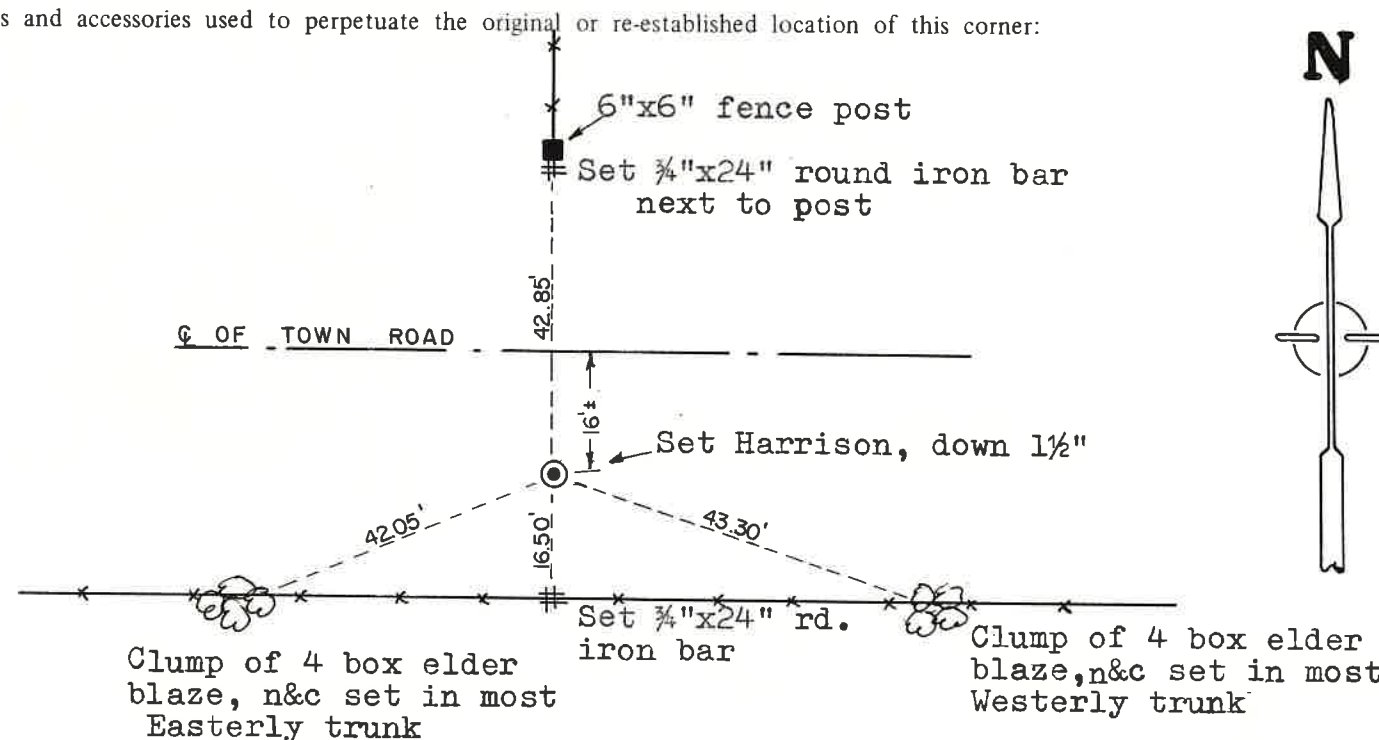
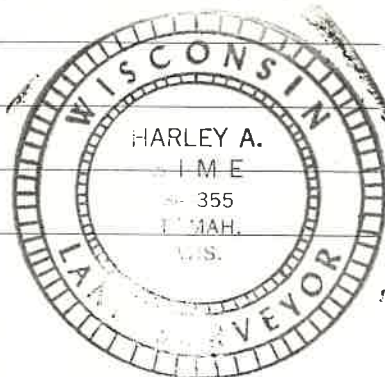
See New sheet

Description of corner evidence found: The extension of the Section line fence East from the NW corner of Sec. 31 placed the line North of the road centerline. By the aerial photo, it looks like the line would fall south of the road centerline. The North-South fence at this corner is in good condition. The computed distance between the NW corner and the fence is 2631.05', matching the record closing distance very close. The computed distance between the fence and the NE corner is 2604.99', which was verified by field measurement of that 1/2 mile. I placed the corner at the intersection of the computed fence bearing and a straight line between the NE&NW corners. The bearing of the North line of the section closely paralleled the South line when the rest of the section was computed.

Description of corner and witness monuments, references and accessories used to perpetuate the original or re-established location of this corner:

Witnesses to corner location:

D. J. Malliet, Crew chief, R.L.S.
A. L. Lueck



SURVEY CONTROL ORDER

Horizontal	_____
Vertical	_____

WISCONSIN COORDINATE SYSTEM

Corner	East (X)	North (Y)	Elevation (Z)	Zone
Control Sta. Name				

City, Village or Town of Sparta
 County of Monroe

COUNTY SURVEYOR FORM NO. 1