

CERTIFICATE

CERTIFIED LAND CORNER

No. 111

2170430000

I, Harley A. Sime, do hereby certify that on the 22 day of Oct. 19 76, I found (evidence) (no evidence) of the SE corner of Sec. 30, T 17 N, R 4 W, Fourth Principal Meridian, and I re-established said corner according to the Wisconsin Statutes as shown and described hereon.

History of original corner establishment:

Schroeder set a flint stone with "+" (8"x6"x12") 2 Sept. 1884.

Description of corner evidence found:

We did not excavate for the stone on record at this corner. It is my opinion that the roadway had been cut down several feet since the stone was set, and that it is very likely that the stone would not be there. The intersection of the road centerlines at this location matched well with the surrounding sections, I therefore accepted this location.

Dated this 9 day of July 19 76

Harley A. Sime
 COUNTY SURVEYOR
 Title

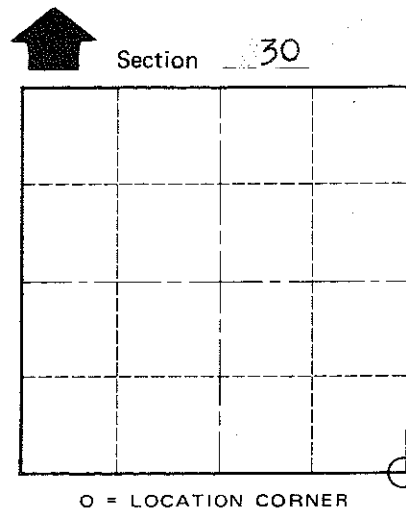
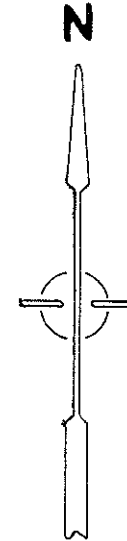
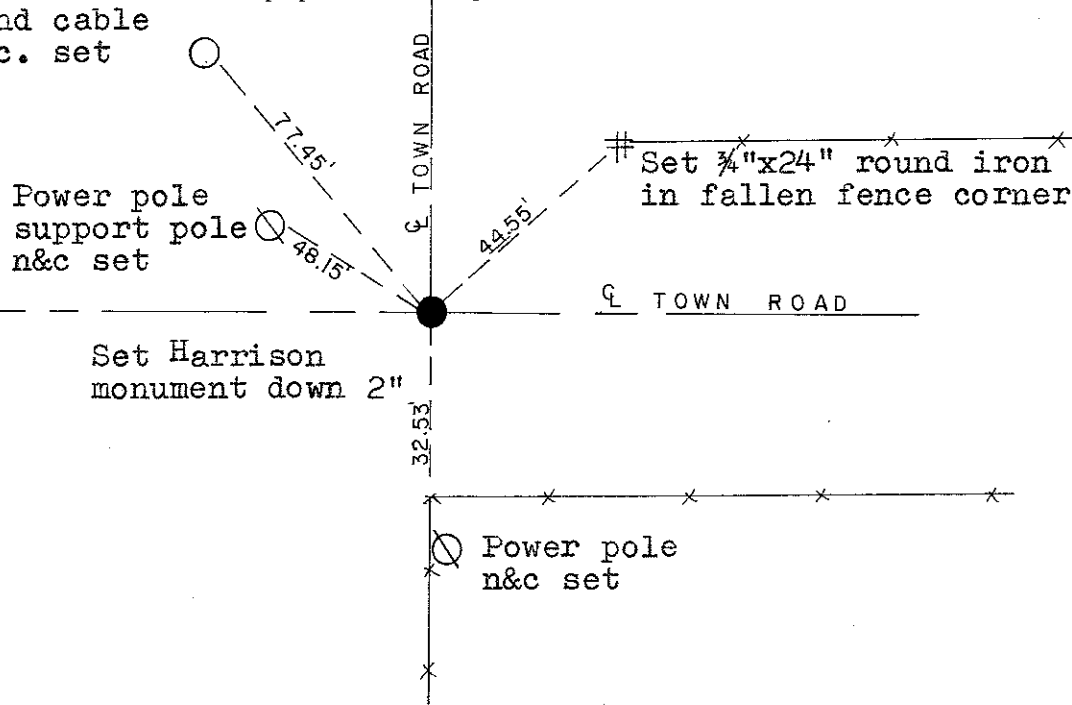
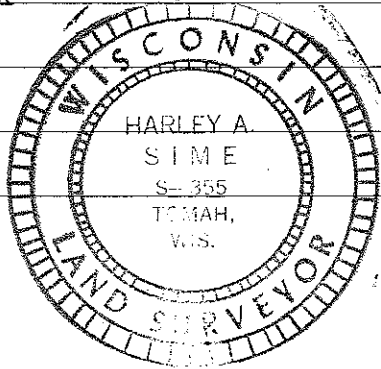
Description of corner and witness monuments, references and accessories used to perpetuate the original or re-established location of this corner:

Underground cable posts, n&c. set

Witnesses to corner location:

D.J. Malliet, Crew chief, R.L.S.

A.L. Lueck



T 17 N R 4 W
 WISCONSIN

COUNTY SURVEYOR FORM NO. 1

SURVEY CONTROL ORDER

Horizontal	_____
Vertical	_____

WISCONSIN COORDINATE SYSTEM

Corner	East (X)	North (Y)	Elevation (Z)	Zone
Control Sta. Name				

City, Village or Town of Sparta

County of Monroe