

109

**U.S. PUBLIC LAND CORNER
MAINTENANCE**

Corner ID : NE Sec. 32, T17N-R4W

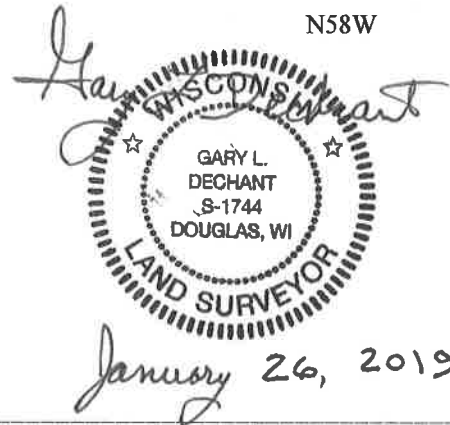
21704290000

<u>DATE</u>	<u>CREW</u>	<u>MONUMENT TYPE</u> -----
January 22, 2019	Zachariah P. Dechant Gary L. Dechant	Found Harrison Monument intact 11' south of center of Iberia Avenue. On line with fence running south. Down 8".

References:

	<u>Bearing</u>	<u>Distance</u>
1) Set 3/4"x24" round iron bar, down 10" in field	N18E	52.22'
2) Set 3/4"x24" round iron bar, down 6" in pasture	S58E	50.82'
3) Set 3/4"x24" round iron bar, down 10" in field	S18W	36.92'
4) Set 3/4"x24" round iron bar, down 10" in field	N58W	54.58"

Harrison and reference markers set on straight lines.



I, Harley A. Sime, do hereby certify that on the 14 day of June 1976, I found ~~(evidence)~~ (no evidence) of the NE corner of Sec. 32, T 17 N, R 4 W, Fourth Principal Meridian, and I re-established said corner according to the Wisconsin Statutes as shown and described hereon.

Dated this 13 day of July 1976.

Harley A. Sime

COUNTY SURVEYOR

History of original corner establishment:

Fred Holden visited this corner Nov. 16, 1899, under the direction of Hamilton LaRue

Description of corner evidence found:

By observing the aerial photos and the field conditions it is evident that the road shifts North and South on the section lines. Placing the corner on line between the section corners to the East and West and accepting the location of the North-South fence at this corner, matched the existing field conditions well and matched the record mile to the East very well.

See Reverse Side For Maintenance

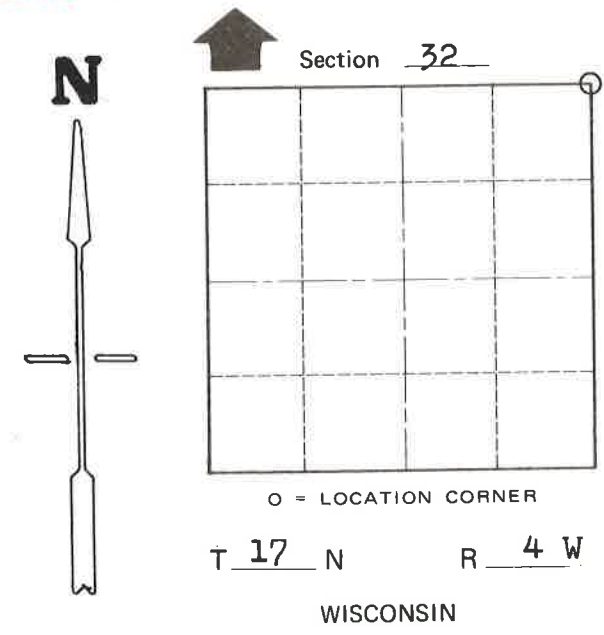
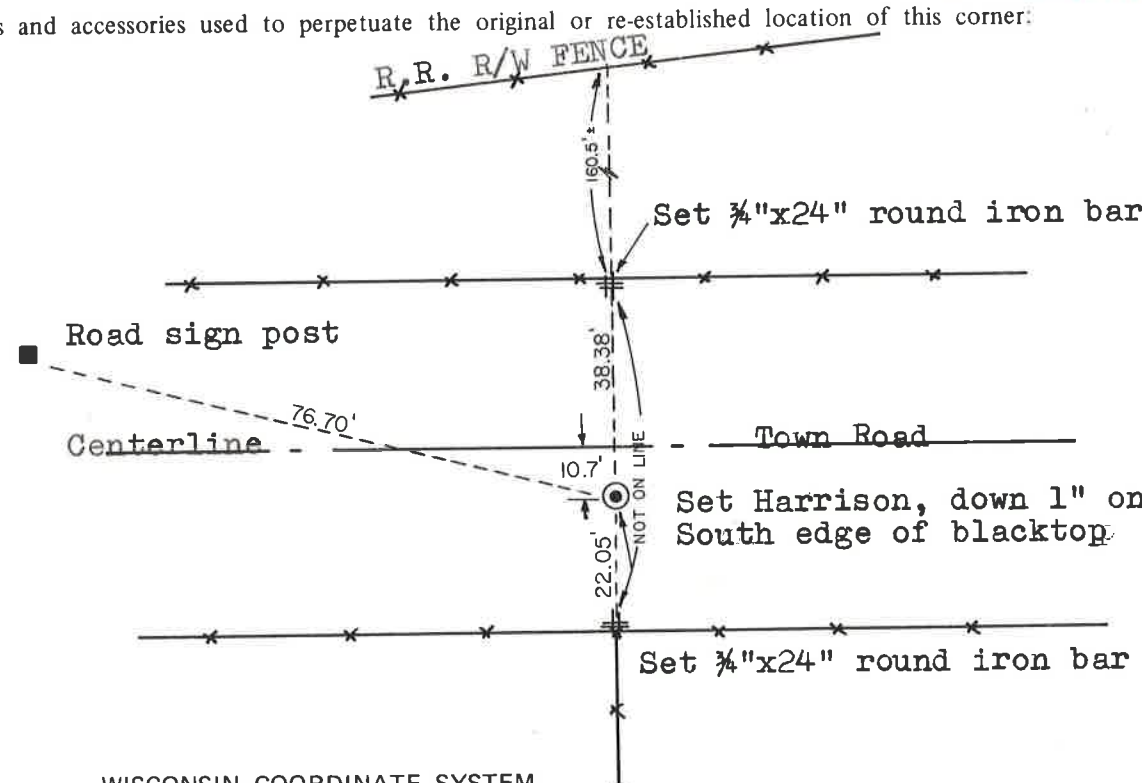
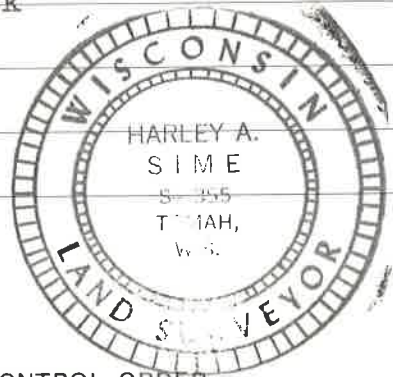
Description of corner and witness monuments, references and accessories used to perpetuate the original or re-established location of this corner:

Witnesses to corner location:

Douglas J. Malliet
D.J. Malliet, Crew chief, R.L.S.

A.L. Lueck

B. Meyer



SURVEY CONTROL ORDER

Horizontal	_____
Vertical	_____

WISCONSIN COORDINATE SYSTEM

Corner	East (X)	North (Y)	Elevation (Z)	Zone
Control Sta. Name				

City, Village or Town of Sparta

County of Monroe

COUNTY SURVEYOR FORM NO. 1