

#108

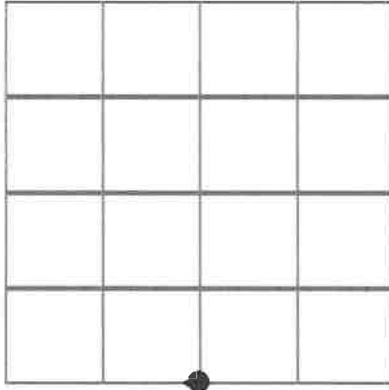
U.S. Public Land Survey Monument Record

Corner ID: S1/4 Sec. 28, T17N-R4W

21704280020

Type of Monument: No monument set, falls in Interstate r/w

Sec. 28, T17N-R4W



County Coordinates:

Witnesses: Zachariah P. Dechant, Al Hoff
Gary L. Dechant



March 19, 2019

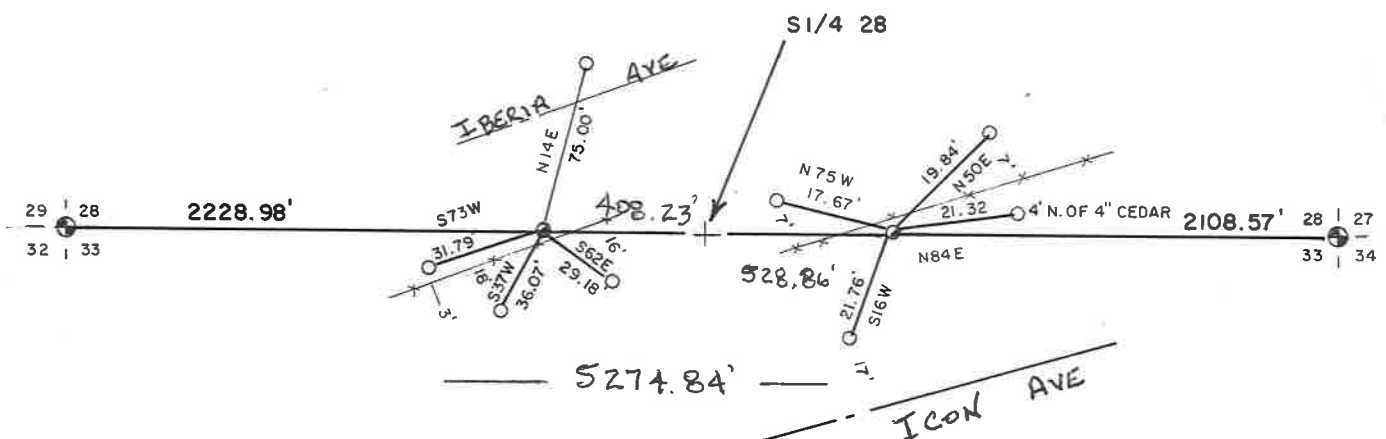
Basis For Monument Location:

(Show info such as history, evidence, testimony, found or method of relocation)

Original Government Survey performed by Uriah Biggs in 1845.

Douglas Malliet, under the direction of Harley A. Sime, in February 1976 established a computed corner for the S1/4 of Section 28, on line and half-way between section corners. They did not set the actual corner as it fell within the Interstate – 90 right of way. They set two reference markers, which we found, east and west of the r/w fence.

- =Set 24" section of steel fence post (T-post)
- =Existing 1.25" round iron bar. Set survey sign.



CERTIFICATE

CERTIFIED LAND CORNER

No. 108 A

21704280020

I, Harley A. Sime, do hereby certify that on the 5 day of February 1976, I found ~~(evidence)~~ (no evidence) of the N¹/₄ corner of Sec. 33, T 17 N, R 4 W, Fourth Principal Meridian, and I re-established said corner according to the Wisconsin Statutes as shown and described hereon.

Dated this 5 day of March 1976.

Harley A. Sime

COUNTY SURVEYOR
Title

History of original corner establishment:

Description of corner evidence found:

The distance between the NW corner and NE corner of Sec. 33 as I had set as survey points computed out to be within 0.22' of the record distance. I accepted the location of the North-South fence at the NW corner and placed the NE corner at the record distance from the NW corner. The N¹/₄ corner was placed on a straight line and equidistant from the section corners. However, the corner fell within the right of way of I-90; reference bars were set to the East & West.

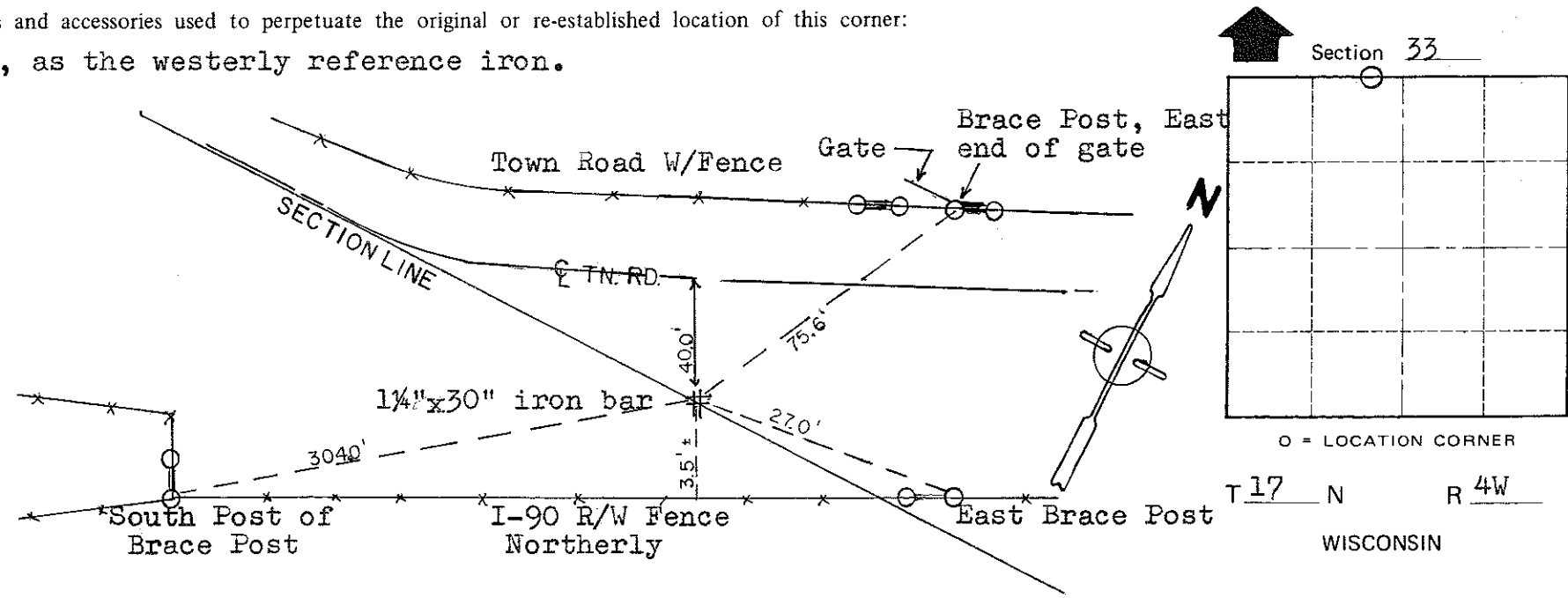
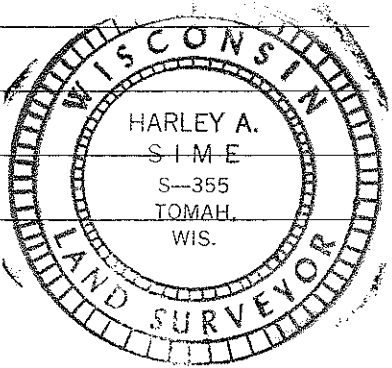
Description of corner and witness monuments, references and accessories used to perpetuate the original or re-established location of this corner:

Set 1 1/4" x 30" round iron bar, up 1", as the westerly reference iron.

Witnesses to corner location:

Douglas J. Malliet
D.J. Malliet-Crew Chief RLS

A. Lueck



COUNTY SURVEYOR FORM NO. 1

SURVEY CONTROL ORDER

Horizontal	_____
Vertical	_____

WISCONSIN COORDINATE SYSTEM

Corner	East (X)	North (Y)	Elevation (Z)	Zone
Control Sta. Name				

City, Village or Town Sparta
County of Monroe

CERTIFICATE

CERTIFIED LAND CORNER

No. 108B

21704280020

I, Harley A. Sime, do hereby certify that on the 4 day of February 1976, I found ~~(evidence)~~ (no evidence) of the N $\frac{1}{4}$ corner of Sec. 33, T17 N, R 4 W, Fourth Principal Meridian, and I re-established said corner according to the Wisconsin Statutes as shown and described hereon.

Dated this 9 day of July 1976.

Harley A. Sime
 COUNTY SURVEYOR
Title

History of original corner establishment:

Description of corner evidence found:

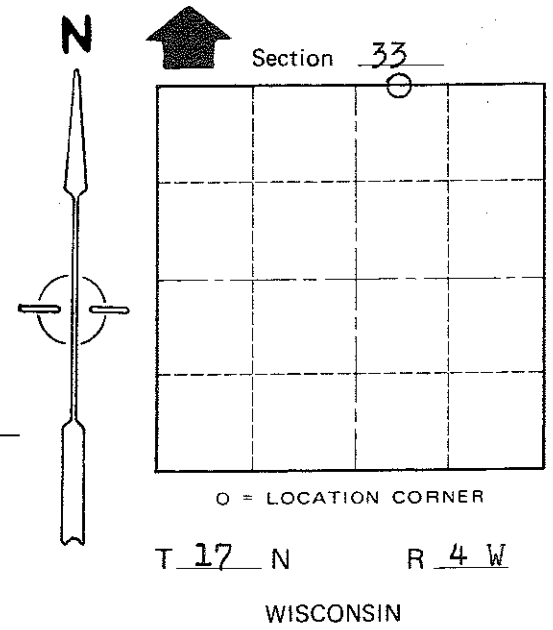
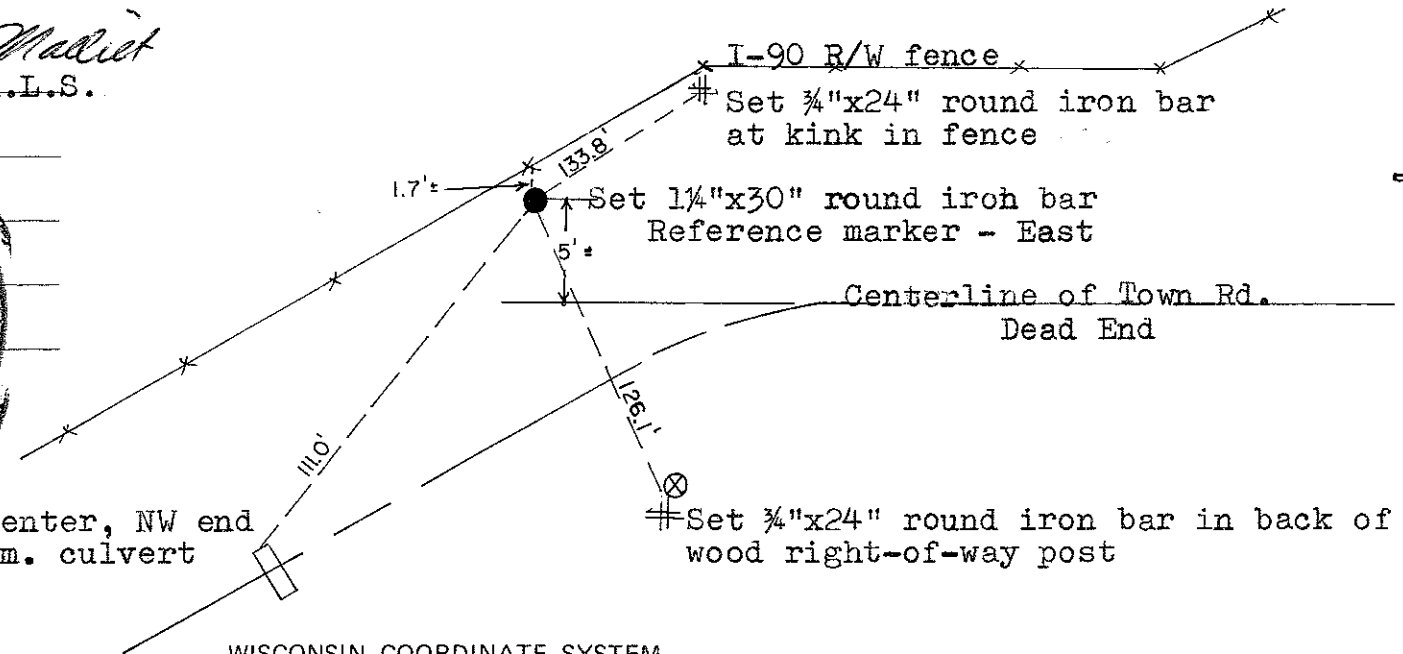
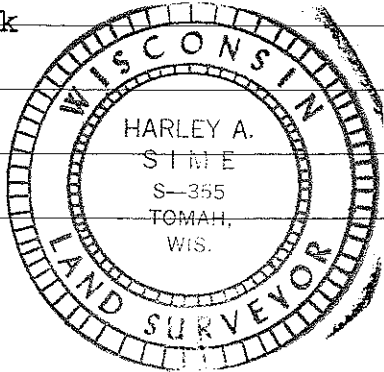
The distance between the NW corner and the NE corner of Sec. 33 as I had set as survey points computed out to be within 0.22' of the record distance. I accepted the location of the North-South fence at the NW corner and I placed the NE corner at the record distance from the NW corner. The N $\frac{1}{4}$ corner was placed on a straight line and equidistant from the Section corners. However, the corner fell within the right-of-way of I-90; reference bars were set to the East and West.

Description of corner and witness monuments, references and accessories used to perpetuate the original or re-established location of this corner:

Witnesses to corner location:

D.J. Malliet, Crew chief, R.L.S.

A.L. Lueck



COUNTY SURVEYOR FORM NO. 1

SURVEY CONTROL ORDER

Horizontal	_____
Vertical	_____

Top-center, NW end of c.m. culvert

WISCONSIN COORDINATE SYSTEM

Corner	East (X)	North (Y)	Elevation (Z)	Zone
Control Sta. Name				

City, Village or Town of Sparta
 County of Monroe