

# 107

**U.S. PUBLIC LAND CORNER  
MAINTENANCE**

**Corner ID : SE Sec.28, T17N-R4W**

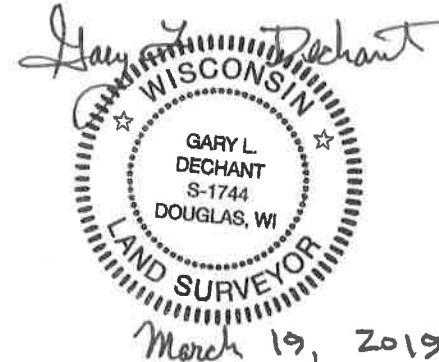
**21704280000**

<u>DATE</u>	<u>CREW</u>	<u>MONUMENT TYPE</u> -----
March 19, 2019	Zachariah P.Dechant Gary L. Dechant	Existing Railroad spike over Harrison at Icon Avenue/Ice Box Road intersection. Set bolt 1' west & 1' south.

References:

	<u>Bearing</u>	<u>Distance</u>
1) Set 3/4"x24" round iron bar in east shoulder of road 6' north of mail boxes	N57E	28.04'
2) Set 3/4"x24" iron pipe in east shoulder of road	S44E	20.13'
3) Set 3/4"x24" round iron bar 3' NE of 3" Jack Pine	S57W	119.94'
4) Set 3/4"x24" round iron bar 4' north of power pole north of Icon Ave	N44W	102.72'

Corner and reference markers set on straight lines.



I, Harley A. Sime, do hereby certify that on the 16 day of June 1976, I found ~~(evidence)~~ (no evidence) of the NE corner of Sec. 33, T 17 N, R 4 W, Fourth Principal Meridian, and I re-established said corner according to the Wisconsin Statutes as shown and described hereon.

Dated this 9 day of July 1976.

Harley A. Sime  
 COUNTY SURVEYOR  
 Title

History of original corner establishment:

Fred Holden, under the direction of Hamilton La Rue, visited this corner on 16 Nov. 1899. He states in his field notes that he indentified a stone placed by a former surveyor while the trees were still standing.

Description of corner evidence found:

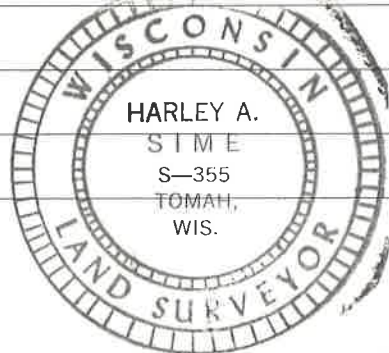
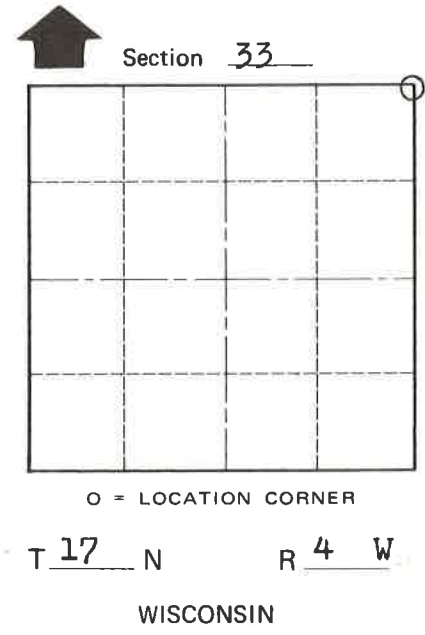
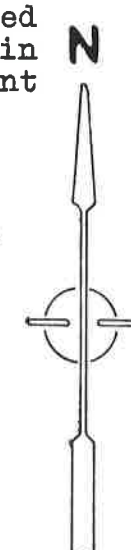
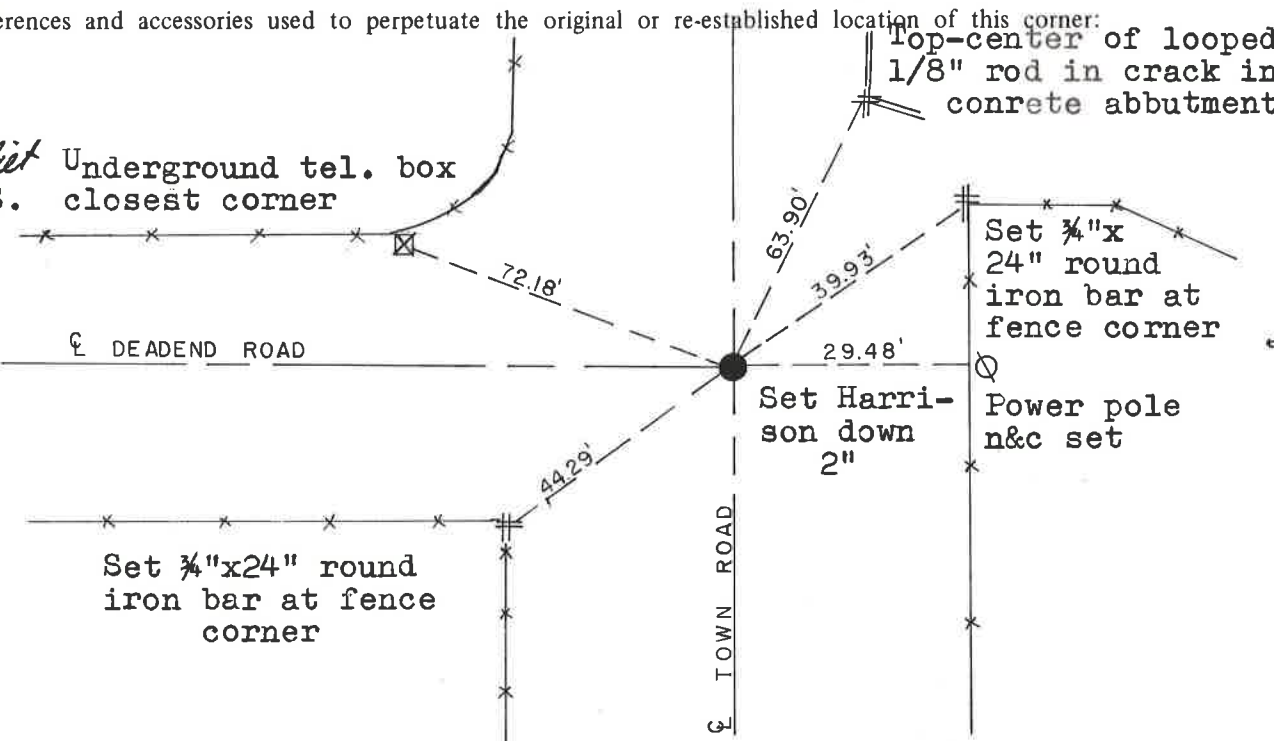
I dug for the stone on record at this corner location. Dug quite a large hole down to about 8', but could not locate the stone. Accepting the centerlines of the roads placed the corner within 0.22' of the record distance from the NW corner of Sec. 33, and at nearly the record mile from the SE corner of Sec. 33. I set the corner at the record distance from the NW corner of Sec. 33 and on the East-West road centerline.

**See Reverse Side  
For Maintenance**

Description of corner and witness monuments, references and accessories used to perpetuate the original or re-established location of this corner:

Witnesses to corner location:

D.J. Malliet, Crew chief, R.L.S.  
D.C. Dade



COUNTY SURVEYOR FORM NO. 1

SURVEY CONTROL ORDER

Horizontal	_____
Vertical	_____

WISCONSIN COORDINATE SYSTEM

Corner	East (X)	North (Y)	Elevation (Z)	Zone
Control Sta. Name				

City, Village or Town of Sparta

County of Monroe