

CERTIFICATE

CERTIFIED LAND CORNER

No. 98

21704272000

I, Harley A. Sime, do hereby certify that on the 18 day of August 19 75, I found (evidence) (~~no evidence~~) of the E¹/₄ corner of Sec. 27, T 17 N, R 4W, Fourth Principal Meridian, and I re-established said corner according to the Wisconsin Statutes as shown and described hereon.

Dated this 5 day of March 19 76.

Harley A. Sime
 COUNTY SURVEYOR
 Title

History of original corner establishment:

Description of corner evidence found:

Found 1/4" round iron bar set by D.L. Mulock in March of 1964, and used in subsequent surveys; replaced with Harrison Monument.

COUNTY SURVEYOR FORM NO. 1

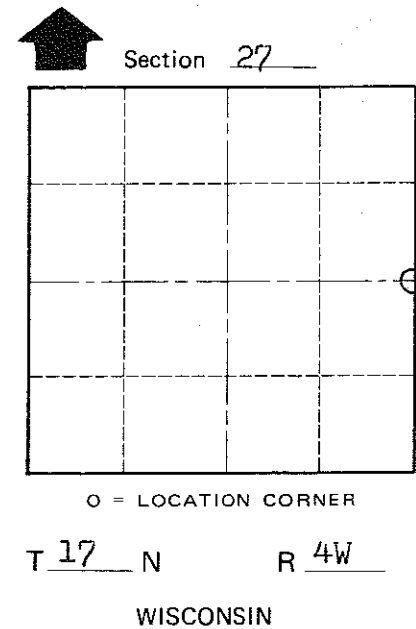
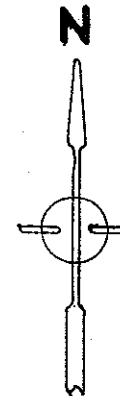
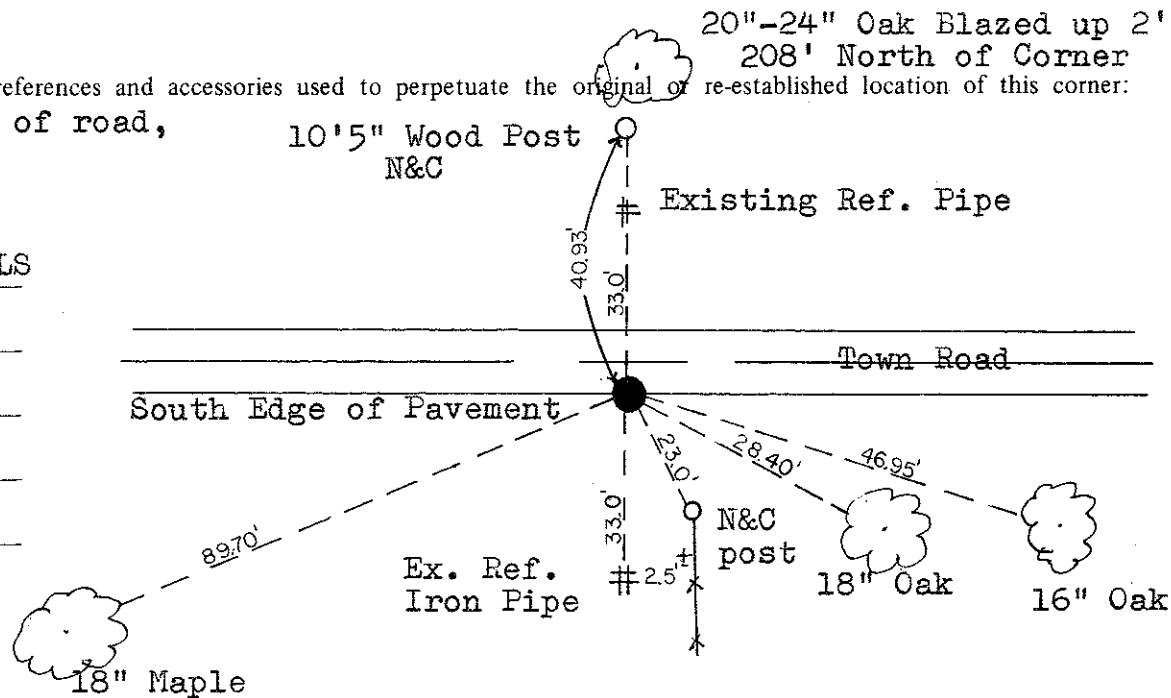
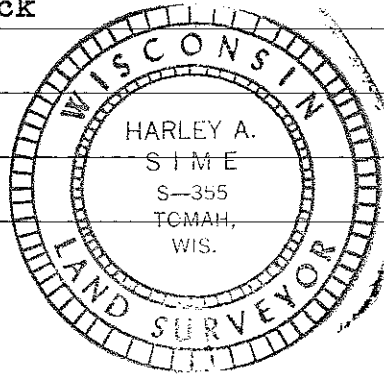
Description of corner and witness monuments, references and accessories used to perpetuate the original or re-established location of this corner:

Set Harrison on South edge of road,
 Down 2.5"

Witnesses to corner location:

D.J. Malliet - Crew Chief RLS

A. Lueck



SURVEY CONTROL ORDER

Horizontal	_____
Vertical	_____

WISCONSIN COORDINATE SYSTEM

Corner	East (X)	North (Y)	Elevation (Z)	Zone
Control Sta. Name				

City, Village or Town Sparta

County of Monroe