

99

**U.S. PUBLIC LAND CORNER
MAINTENANCE**

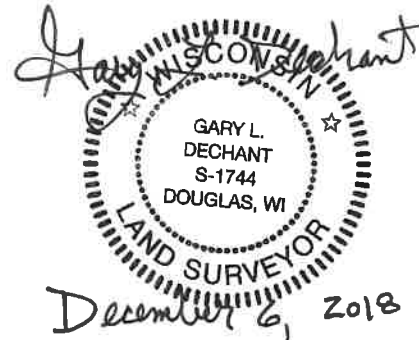
**Corner ID : W1/4 Sec.25, T17N-R4W
21704262000**

<u>DATE</u>	<u>CREW</u>	<u>MONUMENT TYPE</u> -----
November 28, 2018	Zachariah P. Dechant Gary L. Dechant	Existing Nail center line of Ideal Road./north side St. Patrick's Catholic Cemetery. Fits 1976 ties to culverts.

References:

	<u>Bearing</u>	<u>Distance</u>
1) Existing 3/4" round iron bar, at NW corner post of cemetery	East	33.08'
2) Set 3/4"x24" round iron bar, down 2", 8' north of NW corner of "Beau" monument in cemetery. 8' tall monument with cross on top.	S51E	57.99'
3) Set 3/4"x24" round iron bar, down 3", 2' east of fence post, 2' SE of 1 1/4" iron pipe	West	44.23'
4) Set 3/4"x24" round iron bar, down 2", 4' SE of 6" Cedar on south side of driveway 1700 Ideal	N51W	56.53'

Corner and reference markers set on straight lines.



CERTIFICATE

CERTIFIED LAND CORNER

No. 99

I, Harley A. Sime, do hereby certify that on the 15 day of June 1976, I found (evidence) ~~(no evidence)~~ of the E 1/4 corner of Sec. 25, T 17 N, R 4 W, Fourth Principal Meridian, and I re-established said corner according to the Wisconsin Statutes as shown and described hereon.

Dated this 8 day of July 1976.

Harley A. Sime
COUNTY SURVEYOR

History of original corner establishment:

Fred Holden set a stone with "+" at this corner, 27 Oct. 1902.

Description of corner evidence found:

Found stone set by Fred Holden and 1 1/2" iron pipe over stone, set by H.A. Sime. I accepted the stone and set a Harrison monument over the iron pipe and stone (stone down 6'±).

See Reverse Side For Maintenance

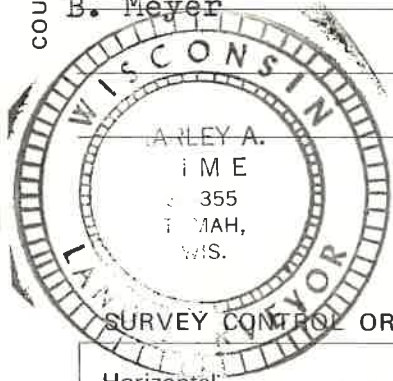
Description of corner and witness monuments, references and accessories used to perpetuate the original or re-established location of this corner:

Witnesses to corner location:

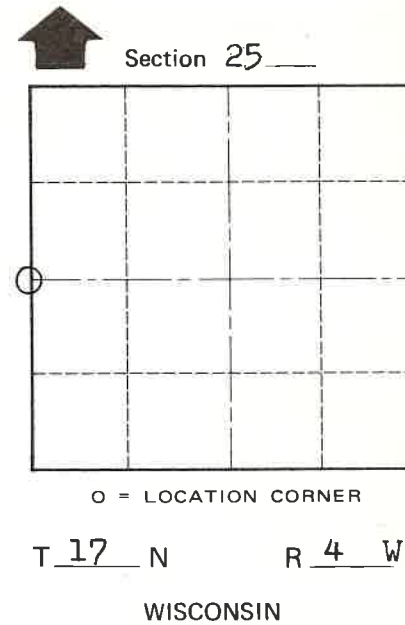
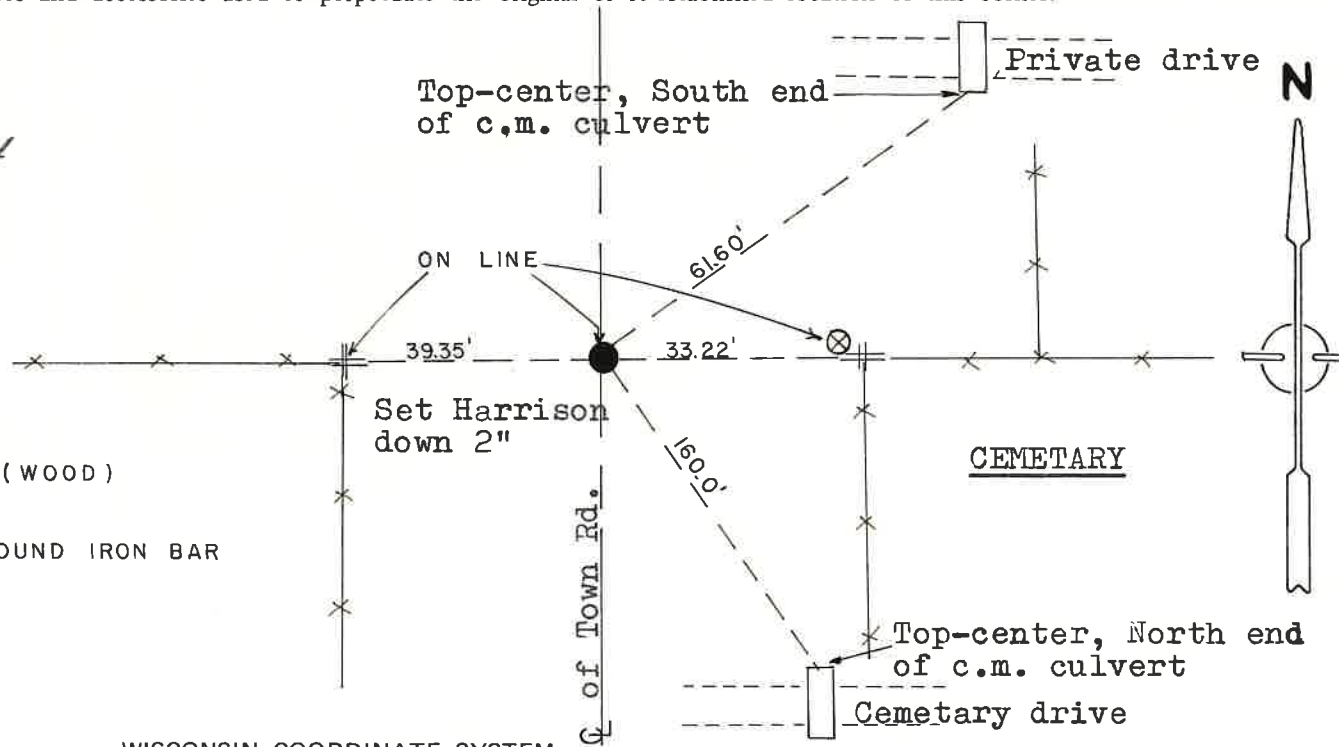
D.J. Malliet, Crew chief, R.L.S.

A.L. Lueck

B. Meyer



⊗ = R/W POSTS (WOOD)
= SET 3/4" ROUND IRON BAR



SURVEY CONTROL ORDER
Horizontal _____
Vertical _____

WISCONSIN COORDINATE SYSTEM				
Corner	East (X)	North (Y)	Elevation (Z)	Zone
Control Sta. Name				

City, Village or Town of Sparta

County of Monroe

COUNTY SURVEYOR FORM NO. 1