

CERTIFICATE

CERTIFIED LAND CORNER

No. 103

21704260000

I, Harley A. Sime, do hereby certify that on the 23 day of July 1975, I found (evidence) (~~no evidence~~) of the S.W. corner of Section 25, T17 N, R 4W, Fourth Principal Meridian, and I re-established said corner according to the Wisconsin Statutes as shown and described hereon.

History of original corner establishment:
County Surveyor Fred Holden set an iron pipe at this corner 10 August 1903.

Dated this 23 day of Jan. 1976.

Description of corner evidence found:
Found 1"x24" capped iron pipe with 3/8"x12" round head bolt next to pipe. Replaced pipe and bolt with a Harrison monument.

Harley A. Sime

County Surveyor

Title

COUNTY SURVEYOR FORM NO. 1

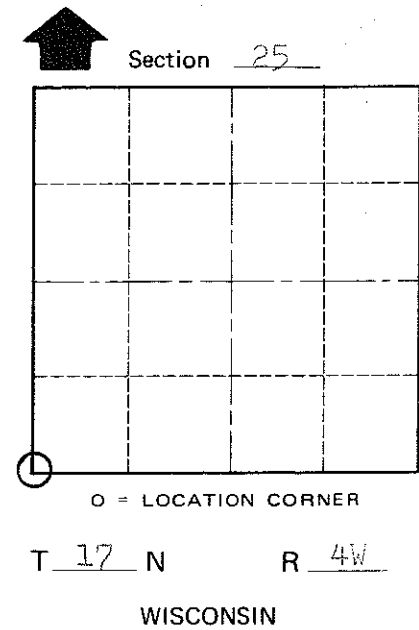
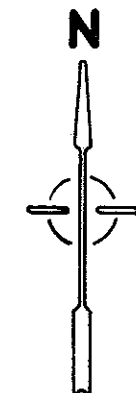
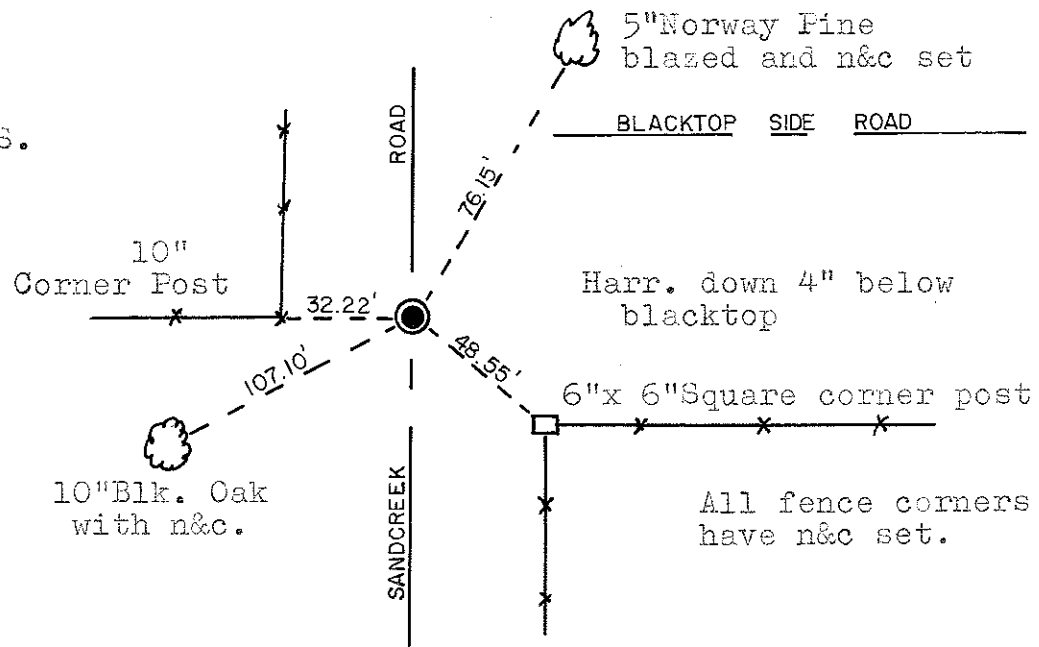
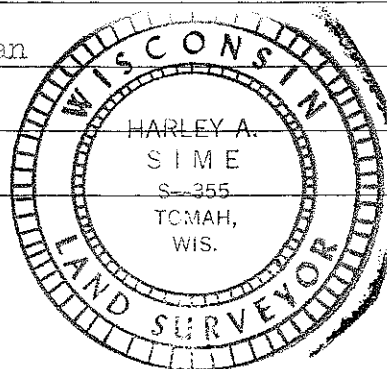
Description of corner and witness monuments, references and accessories used to perpetuate the original or re-established location of this corner:

Witnesses to corner location:

Darius P. Malliet
D. Malliet - Crew Chief, R.L.S.

D. Dade

T. Jeatran



SURVEY CONTROL ORDER

Horizontal	_____
Vertical	_____

WISCONSIN COORDINATE SYSTEM

Corner	East (X)	North (Y)	Elevation (Z)	Zone
Control Sta. Name				

City, Village or Town Sparta

County of Monroe