

CERTIFICATE

I, Harley A. Sime, do hereby certify that on the 8 day of August 1976, I found (evidence) (~~no evidence~~) of the Center 1/4 corner of Sec. 25, T 17 N, R 4 W, Fourth Principal Meridian, and I re-established said corner according to the Wisconsin Statutes as shown and described hereon.

Dated this 14 day of July 1976.

Harley A. Sime
 COUNTY SURVEYOR
 Title

CERTIFIED LAND CORNER

No. 99B

21704252020

History of original corner establishment:

Fred Holden set a stone at this corner 27 Oct. 1902. with "+"

Description of corner evidence found:

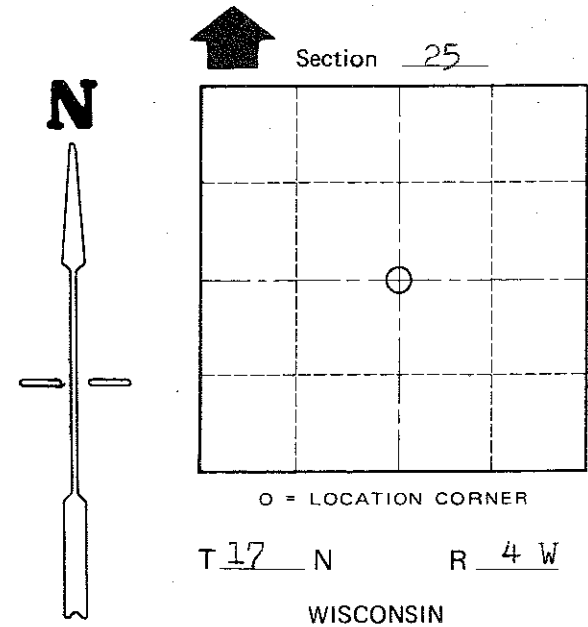
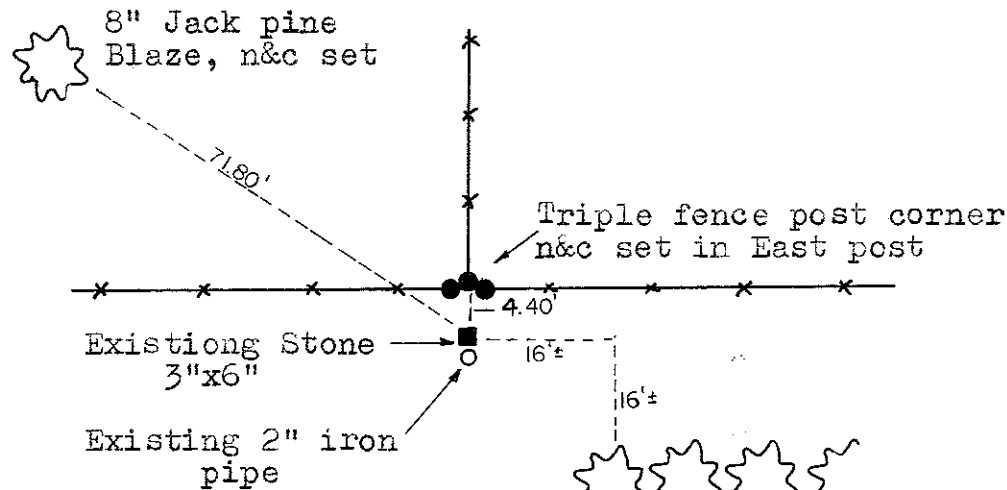
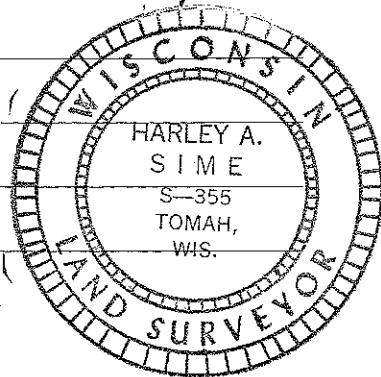
Found existing 3"x6" stone set by Fred Holden and a 2" iron pipe south of the stone; both being used in subsequent surveys.

COUNTY SURVEYOR FORM NO. 1

Description of corner and witness monuments, references and accessories used to perpetuate the original or re-established location of this corner:

Witnesses to corner location:

Douglas J. Malliet
 D.J. Malliet, Crew chief, R.L.S.
D.C. Dade



PLANATION

SURVEY CONTROL ORDER

Horizontal	_____
Vertical	_____

WISCONSIN COORDINATE SYSTEM

Corner	East (X)	North (Y)	Elevation (Z)	Zone
Control Sta. Name				

City, Village or Town of Sparta

County of Monroe