

CERTIFICATE

I, Harley A. Sime, do hereby certify that on the 23 day of July 19 75, I found (evidence) (~~no evidence~~) of the E 1/4 corner of Section 25, T 17 N, R 4W, Fourth Principal Meridian, and I re-established said corner according to the Wisconsin Statutes as shown and described hereon.

Dated this 23 day of Jan. 19 76.

Harley A. Sime
County Surveyor
Title

CERTIFIED LAND CORNER

No. 100

21704252000

History of original corner establishment:

Fred Holden set an iron bar at this corner 30 Jan. 1905.

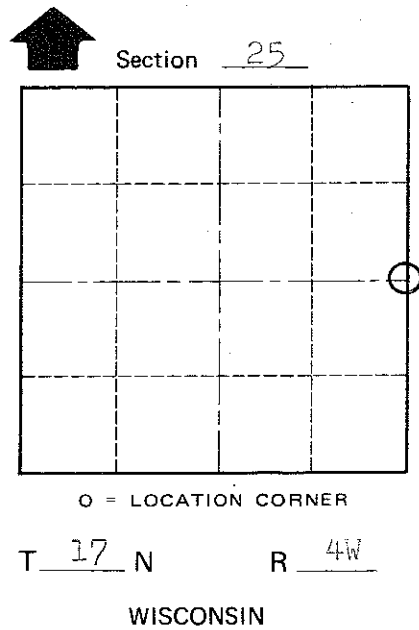
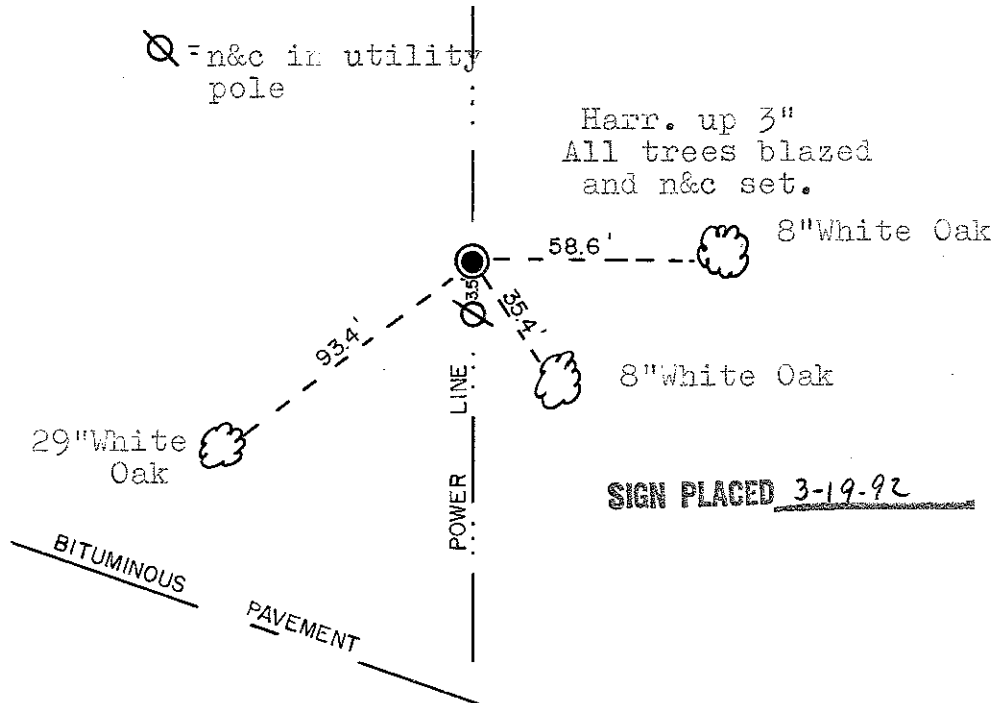
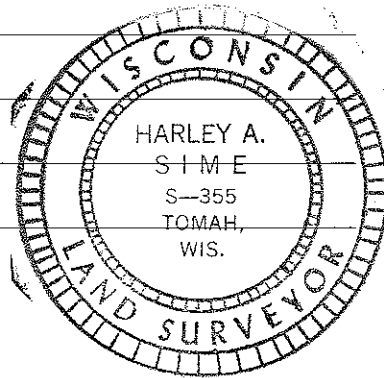
Description of corner evidence found:

Found an iron bar set by Fred Holden and used in subsequent surveys. I replaced the iron bar with a Harrison monument.

Description of corner and witness monuments, references and accessories used to perpetuate the original or re-established location of this corner:

Witnesses to corner location:

D.J. Malliet-Crew Chief, R.L.S.
D.C. Dade
T. Jeatran



COUNTY SURVEYOR FORM NO. 1

SURVEY CONTROL ORDER

Horizontal	_____
Vertical	_____

WISCONSIN COORDINATE SYSTEM

Corner	East (X)	North (Y)	Elevation (Z)	Zone
Control Sta. Name				

City, Village or Town Sparta

County of Monroe