

CERTIFICATE

CERTIFIED LAND CORNER

No. 101

21704250000

I, Harley A. Sime, do hereby certify that on the 9 day of September 1975, I found (evidence) (~~no evidence~~) of the N.E. corner of Section 36, T17 N, R 4W. Fourth Principal Meridian, and I re-established said corner according to the Wisconsin Statutes as shown and described hereon.

History of original corner establishment:

Fred Holden drove a well point at this corner 30 Jan. 1905, according to his field notes.

Description of corner evidence found:

Found an existing stone with "+" next to a 4-way fence corner and under a gate. D.A. Marten found this stone also in early 1973. I accepted this location for the corner and did not replace the stone with a Harrison monument

Dated this 23 day of Jan. 1976.

Harley A. Sime
County Surveyor
Title

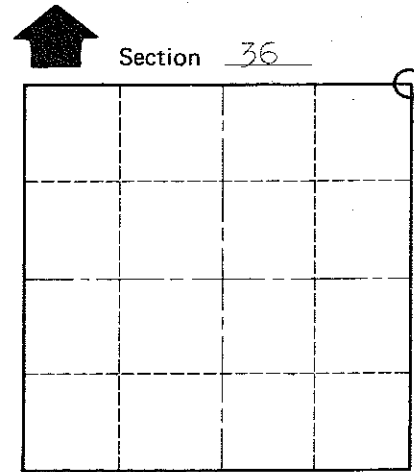
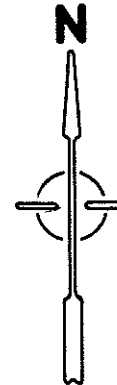
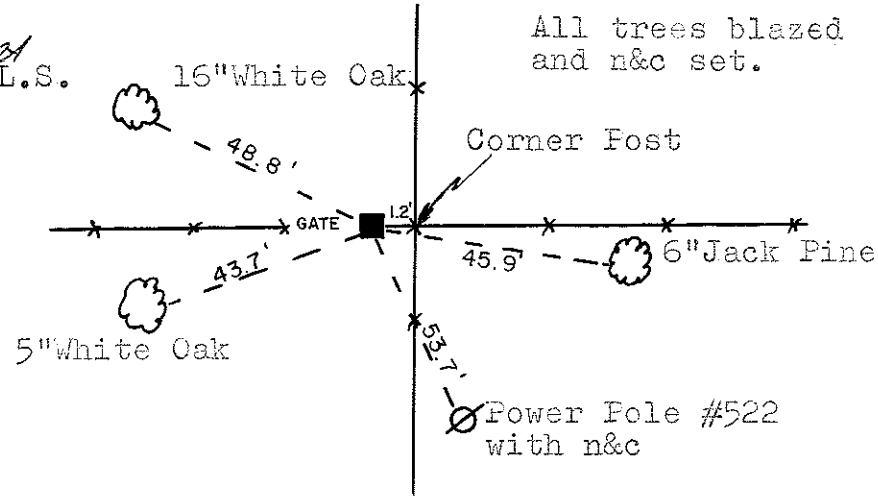
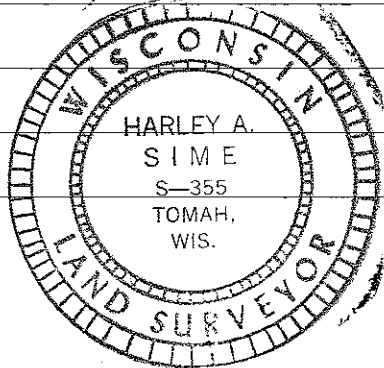
3/12/81
In an unrecorded survey it was found that Keach set this stone in May of 1908. weg

Description of corner and witness monuments, references and accessories used to perpetuate the original or re-established location of this corner:

Witnesses to corner location:

Douglas J. Malliet
D.Malliet - Crew Chief, R.L.S.

A. Lueck



O = LOCATION CORNER

T 17 N R 4W

WISCONSIN

COUNTY SURVEYOR FORM NO. 1

SURVEY CONTROL ORDER

Horizontal _____
Vertical _____

WISCONSIN COORDINATE SYSTEM

Corner	East (X)	North (Y)	Elevation (Z)	Zone
Control Sta. Name				

City, Village or Town Sparta

County of Monroe