

# 79 A

**U.S. PUBLIC LAND CORNER  
MAINTENANCE**


**Corner ID : C1/4 Sec.24, T17N-R4W  
21704242020**

<u>DATE</u>	<u>CREW</u>	<u>MONUMENT TYPE</u> -----
November 28, 2018	Zachariah P. Dechant Gary L. Dechant	Existing Railroad spike 2' south of manhole at intersection of Prairies Avenue & Douglas St. Fits 1981 tie, 1½" iron pipe to the south 24.96', which is just north of power pole guy wire anchor.

References:

	<u>Bearing</u>	<u>Distance</u>
1) Set 3/4"x24" round iron bar, down 2", 4' south of SW corner of house, 925 Douglas	N47E	64.51'
2) Set 3/4"x24" round iron bar, down 2", 36' north of NW corner garage, 675 Prairie Ave	S27E	43.31'
3) Set 3/4"x24" round iron bar, down 2" in lawn, 6' NE of 2'x2'x2' stone, 623 Prairie	S47W	53.23'
4) Set 3/4"x24" round iron bar, down 2", 3' west of 10" Maple, 16' east & 3' north of SE corner of house at 924 Douglas, ST.	N27W	60.66'

Corner and reference markers set on straight lines.

*Gary L. Dechant*  
  
*December 6, 2018*

I, William C. Jung, do hereby certify that on the fifteenth day of June 1981, I found (evidence) ~~(evidence)~~ of the Center 1/4 corner of Section 24, T 17 N, R 4 W Fourth Principal Meridian, and I re-established said corner according to the Wisconsin Statutes as shown and described hereon.

Dated this 2nd day of Sept. 1981.

William C. Jung  
Registered Land Surveyor 1323  
Title

History of original corner establishment:

Harley Sime used this point as the Center 1/4 Corner in July of 1959 and 1960. Duane Marten used this point as the Center 1/4 Corner while doing surveys in September of 1972 and March of 1974. Bill Badow used this same point in a survey done in June of 1975.

Description of corner evidence found:

Found a R.R. spike at a location used as the Center 1/4 Corner in several previous surveys. I accepted this point as the corner by "common report".

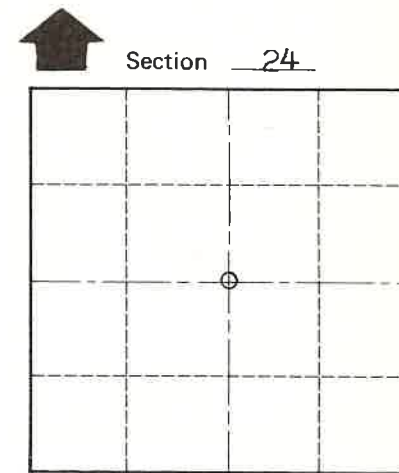
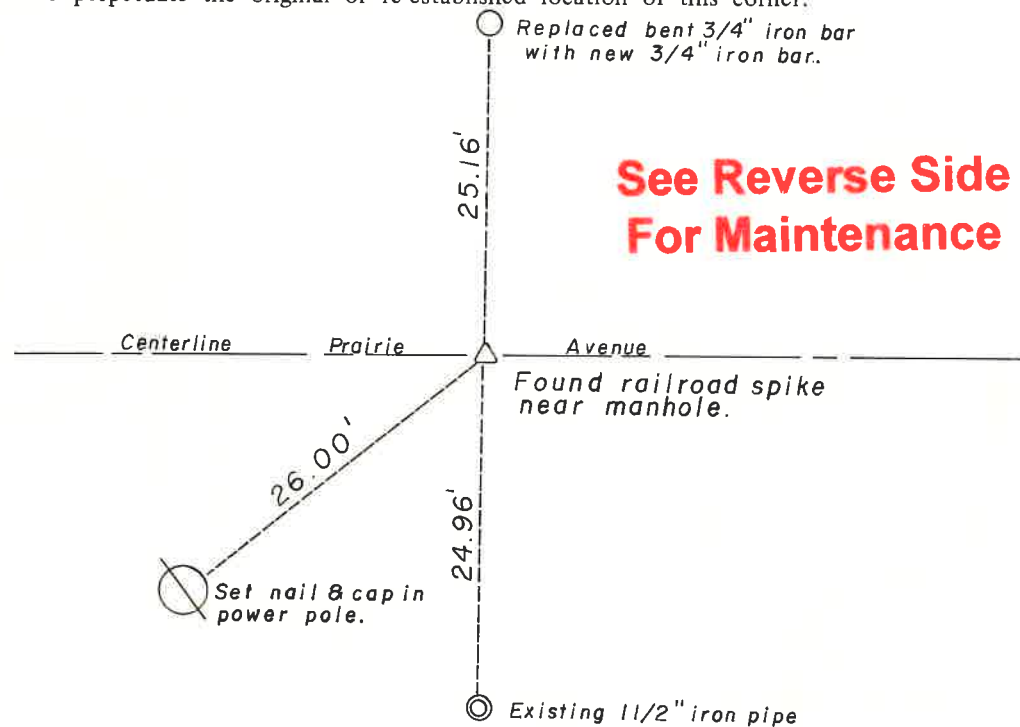
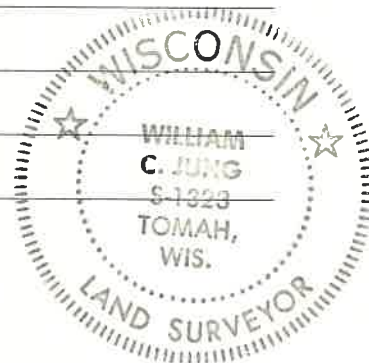
Approved: **HARLEY A. SIME**  
**MONROE CO. SURVEYOR**

Description of corner and witness monuments, references and accessories used to perpetuate the original or re-established location of this corner:

Witnesses to corner location:

William C. Jung

Gary L. Dechant



O = LOCATION CORNER  
 T 17 N R 4 W  
 WISCONSIN

SURVEY CONTROL ORDER

Horizontal	_____
Vertical	_____

WISCONSIN COORDINATE SYSTEM

Corner	East (X)	North (Y)	Elevation (Z)	Zone
Control Sta. Name				

City, ~~Village or Town~~ of Sparta

County of Monroe

COUNTY SURVEYOR FORM NO. 1