

CERTIFICATE

CERTIFIED LAND CORNER

No. 80

21704242000

I, Harley A. Sime, do hereby certify that on the 1 day of July 1976, I found (evidence) ~~(no evidence)~~ of the E 1/4 corner of Sec. 24, T 17 N, R 4 W, Fourth Principal Meridian, and I re-established said corner according to the Wisconsin Statutes as shown and described hereon.

Dated this 13 day of July 1976.

Harley A. Sime
 COUNTY SURVEYOR
Title

History of original corner establishment:

Fred Holden set a stone with a "+" at this corner Aug. 14, 1902. R.W. Hurlburt found the same stone with the top broken off; set a torque tube next to stone in July of 1940.

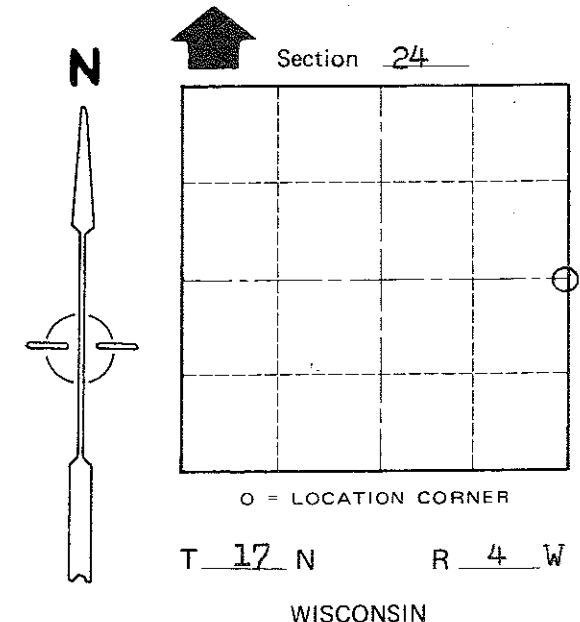
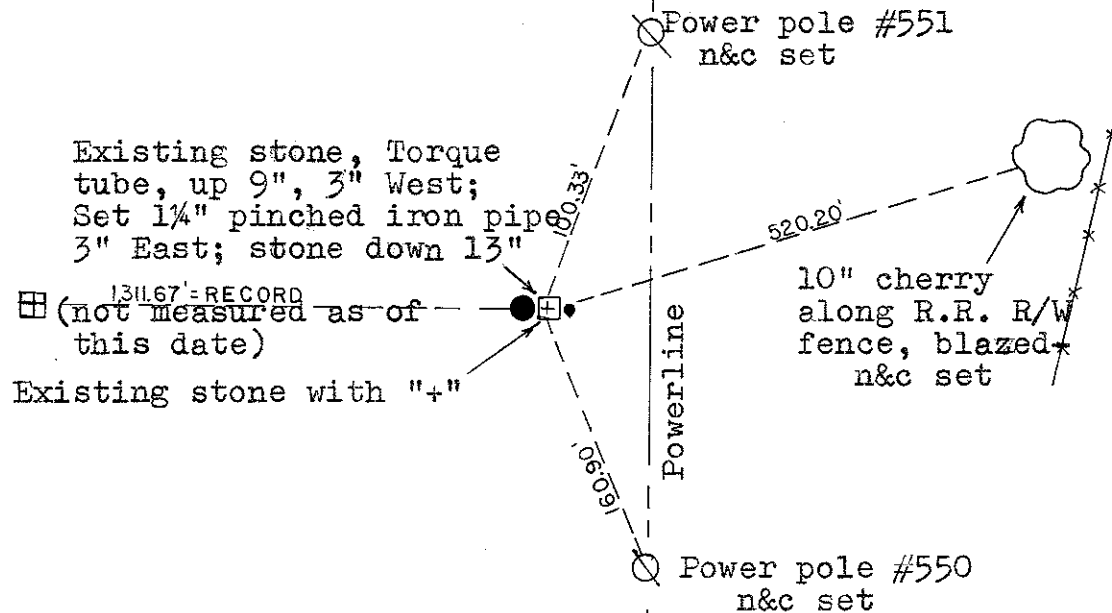
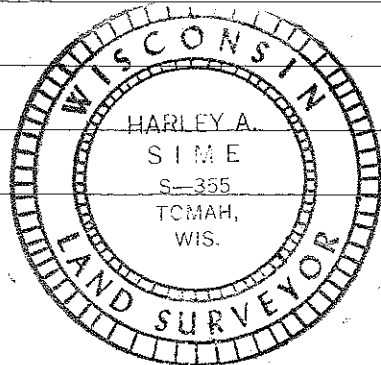
Description of corner evidence found:

Found stone and torque tube. Placed "+" on stone for centering and placed stone down 13" so as to be below plow depth. Stone in fair condition.

Description of corner and witness monuments, references and accessories used to perpetuate the original or re-established location of this corner:

Witnesses to corner location:

Douglas J. Mallitt
 D.J. Mallitt, Crew chief, R.L.S.
G. Dechant



COUNTY SURVEYOR FORM NO. 1

SURVEY CONTROL ORDER

Horizontal	_____
Vertical	_____

WISCONSIN COORDINATE SYSTEM

Corner	East (X)	North (Y)	Elevation (Z)	Zone
Control Sta. Name				

City, Village or Town of Sparta

County of Monroe