

82

**U.S. PUBLIC LAND CORNER
MAINTENANCE**

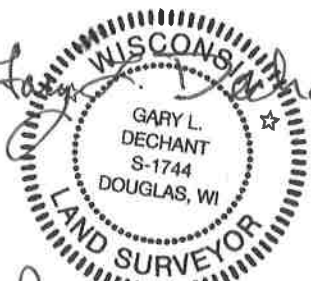
Corner ID : S1/4 Sec. 24, T17N-R4W

21704240020

<u>DATE</u>	<u>CREW</u>	<u>MONUMENT TYPE</u> -----
January 22, 2019	Zachariah P. Dechant Gary L. Dechant	Found Harrison Monument intact.

References:

	<u>Bearing</u>	<u>Distance</u>
1) Set 3/4"x24" round iron bar, down 6", 6' SW of Cedar sapling	N4E	43.50'
2) Set 3/4"x24" round iron bar, down 6" at PI of road in gravel pit	S56E	39.13'
3) Set 3/4"x24" round iron bar, down 6" in center of east-west power line	S18W	58.68'
4) Set 3/4"x24" round iron bar, down 6" in center of 3'x3' mound, 7' north of fence, 14' south of east-west ditch	N85W	56.71'

Gary L. Dechant

January 26, 2019

I, Harley A. Sime, do hereby certify that on the 9 day of September 1975, I found (evidence) (~~no evidence~~) of the N 1/4 corner of Section 25, T17 N, R 4W, Fourth Principal Meridian, and I re-established said corner according to the Wisconsin Statutes as shown and described hereon.

Dated this 22 day of Jan. 1975.

Harley A. Sime
County Surveyor
Title

History of original corner establishment:
Fred Holden set a stake at this corner on 15 August, 1902.

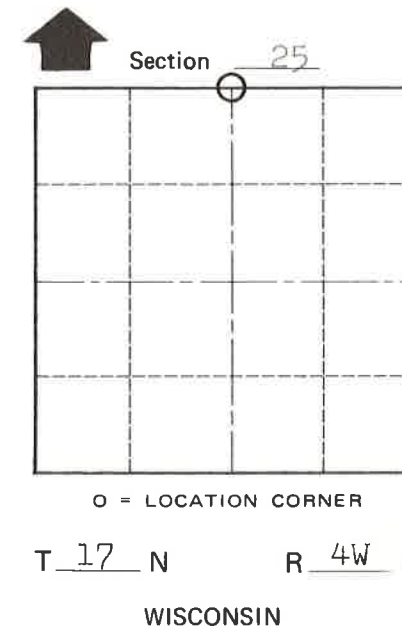
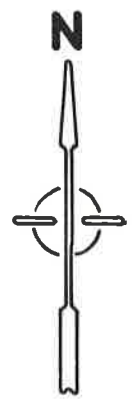
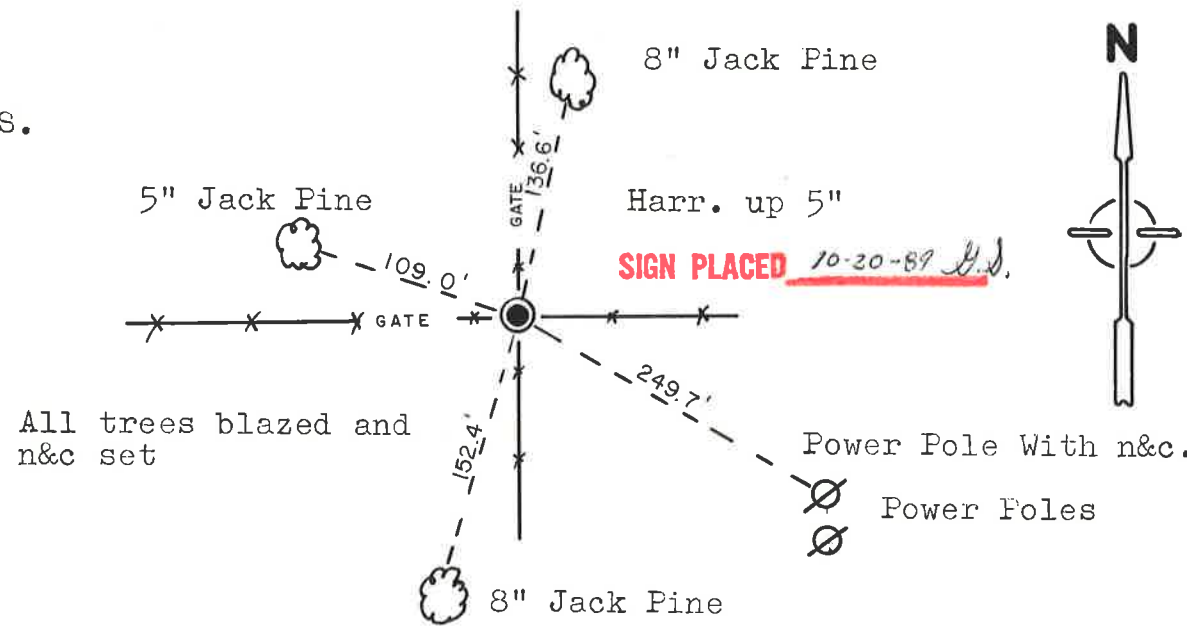
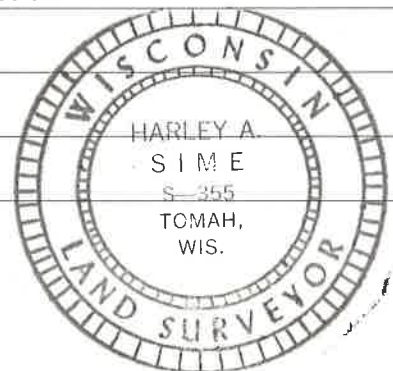
Description of corner evidence found:
Found 1" x 24" pinched iron pipe set by H.A. Sime 12 December, 1964, in 3-way fence corner. Set Harrison monument in place of iron pipe.

See Reverse Side For Maintenance

Description of corner and witness monuments, references and accessories used to perpetuate the original or re-established location of this corner:

Witnesses to corner location:
Douglas J. Malliet
D. Malliet - Crew Chief, R.L.S.

A. Lueck



SURVEY CONTROL ORDER

Horizontal	_____
Vertical	_____

WISCONSIN COORDINATE SYSTEM

Corner	East (X)	North (Y)	Elevation (Z)	Zone
Control Sta. Name				

City, Village or Town Sparta

County of Monroe

COUNTY SURVEYOR FORM NO. 1