

79

**U.S. PUBLIC LAND CORNER
MAINTENANCE**

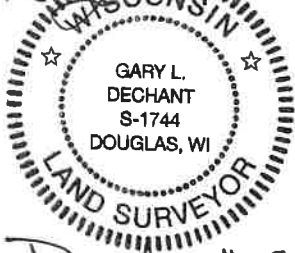
**Corner ID : W1/4 Sec.24, T17N-R4W
21704232000**

<u>DATE</u>	<u>CREW</u>	<u>MONUMENT TYPE</u>
November 28, 2018	Zachariah P. Dechant Gary L. Dechant	Existing chiselled cross center of Water Street. South of houses at 910 & 911 Water St.

References:

	<u>Bearing</u>	<u>Distance</u>
1) Set 3/4"x24" round iron bar in lawn	East	38.81'
2) Set 3/4"x24" round iron bar, in lawn, 15' west of NW corner of house at 915 Water Street	S54E	52.27'
3) Existing 1" pinched iron pipe	West	33.10'
4) Set 3/4"x24" round iron bar, flush in lawn, 7' east & 9' south of NE corner of house 910 Water St.	N54W	51.61'

Corner and reference markers set on straight lines.

Gary L. Dechant

December 11, 2018

I, Harley A. Sime, do hereby certify that on the 1st day of February 1977, I found (evidence) (~~no evidence~~) of the W^{1/4} corner of Section 24, T 17 N, R 4 W Fourth Principal Meridian, and I re-established said corner according to the Wisconsin Statutes as shown and described hereon.

Dated this 2nd day of Feb. 1977.

Harley A. Sime

County Surveyor

History of original corner establishment:

Henry Schroeder was at this corner on July 1, 1884. Also, there was a stone at this corner when Holden was at this corner in 1902. The stone was in the center of the highway.

Description of corner evidence found:

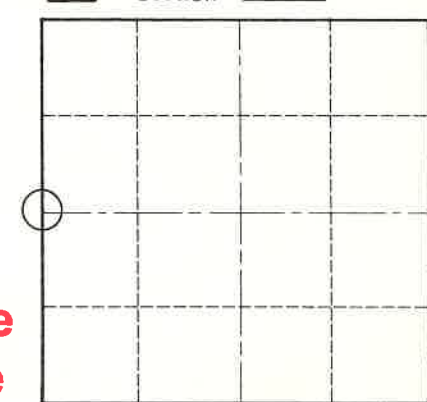
Set the corner using data from previous surveys done in 1959 and 1960. Set a P.K. nail for a temporary corner. The road was frozen too hard to allow digging for the stone or the placing of a permanent marker.

Note: 4/29/77, Jung and Radcliffe

Removed the P.K. and replaced it with a Harrison marker, down 4". Found no stone. Very hard digging. Found another P.K. nail 4.5' to the South.

Note: 2/20/81
Crew: Pietz, Meyer, Dechant
The corner is now a chiselled cross set by Feddersen. The ties are O.K. The Harrison was destroyed during road construction

Section 24



O = LOCATION CORNER
T 17 N R 4 W
WISCONSIN

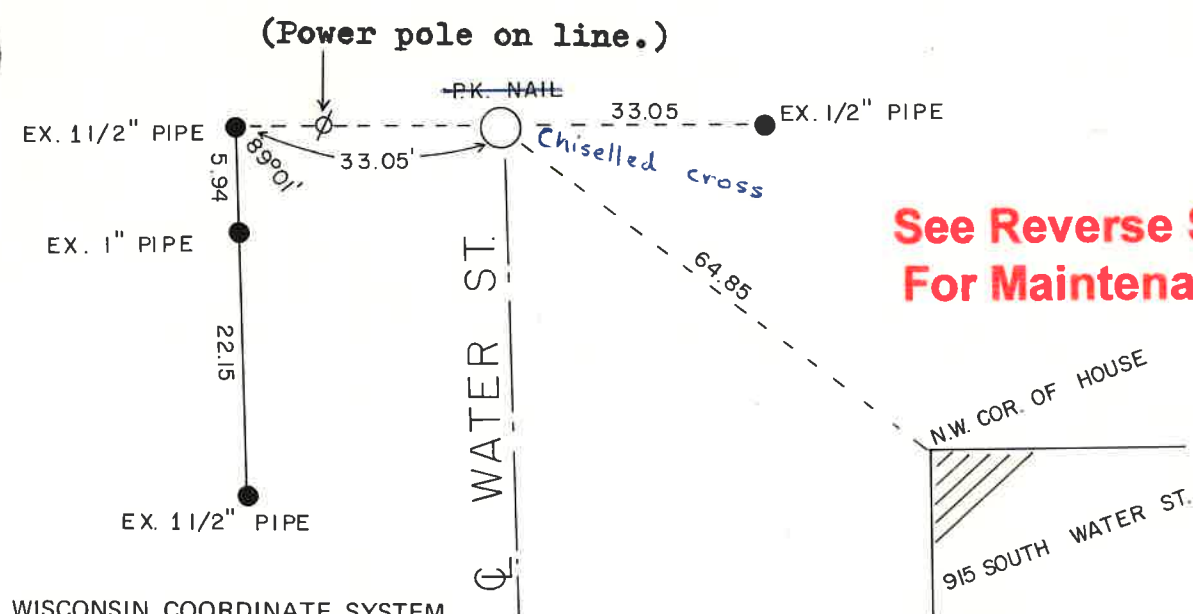
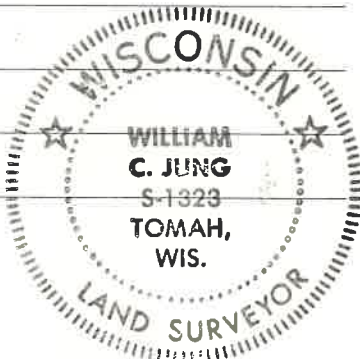
Description of corner and witness monuments, references and accessories used to perpetuate the original or re-established location of this corner:

Set a P.K. nail in the center of the highway. There is also another P.K. nail 0.66' East and 0.20' North of ours. This other P.K. was probably put in by Feddersen.

Witnesses to corner location:

W.C. Jung - Crew Chief *W.C. Jung*

C. Pietz



See Reverse Side For Maintenance

City, Village or Town Sparta
County of Monroe

COUNTY SURVEYOR FORM NO. 1

SURVEY CONTROL ORDER

Horizontal	_____
Vertical	_____

WISCONSIN COORDINATE SYSTEM				
Corner	East (X)	North (Y)	Elevation (Z)	Zone
Control Sta. Name				