

84

**U.S. PUBLIC LAND CORNER
MAINTENANCE**

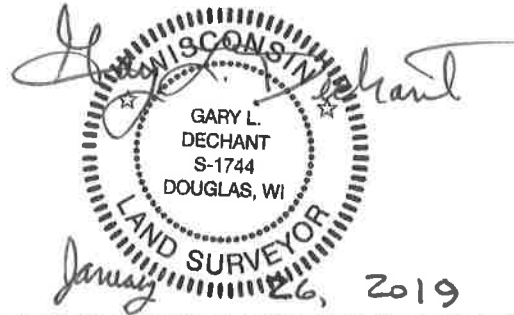
**Corner ID : S1/4 Sec. 23, T17N-R4W
21704230020**

DATE	CREW	MONUMENT TYPE -----
November 21, 2018	Zachariah P. Dechant Gary L. Dechant	No monument found. Did not reset monument because of heavy traffic.

References:

	<u>Bearing</u>	<u>Distance</u>
1) Existing 3/4" round iron bar, west of guard rail	N34°34'46"W	37.42' (37.42')
2) Existing 3/4" round iron bar, east of guard rail	N84°09'43"E	26.93' (26.78')
3) Set 3/4"x24" round iron bar, 12' west of center of power line, set sign 1' north	N84°09'43"E	84.52'
4) Existing 3/4" round iron bar west of guard rail	S84°09'43"W	21.23' (21.02)'
5) Set 3/4"x24" round iron bar in deer trail, 6' east of triple 6" Black Locust set sign 1' north	S84°09'43"W	67.41'

Corner coordinates: 373822.2433 NAD 83(2011)
623901.8254



I, Garold A. Sime, do hereby certify that on the 17 day of November 1986 I found (Evidence) (no evidence) of the S 1/4 corner of Sec. 23, T 17 N, R 4 W Fourth Principal Meridian, and I re-established said corner according to the Wisconsin Statutes as shown and described hereon.

Dated this 23 day of Dec. 1986

Garold A. Sime
Deputy County Surveyor
Title

History of corner establishment since Original Government Survey

Refer to attached tie sheet, July 1976.

Description of corner evidence found:

Monument and ties where destroyed during road reconstruction.
Set corner at previously computed location.

See Reverse Side
For Maintenance

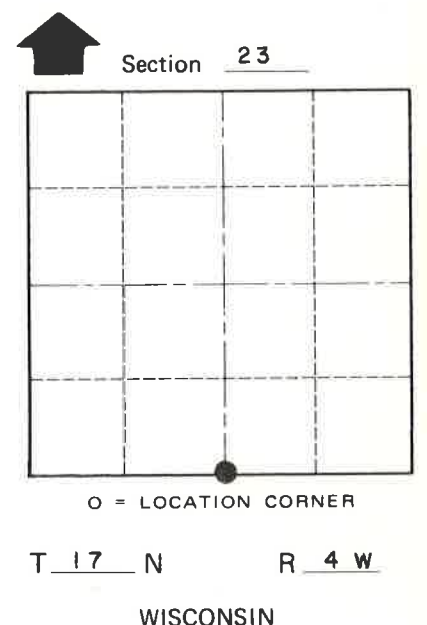
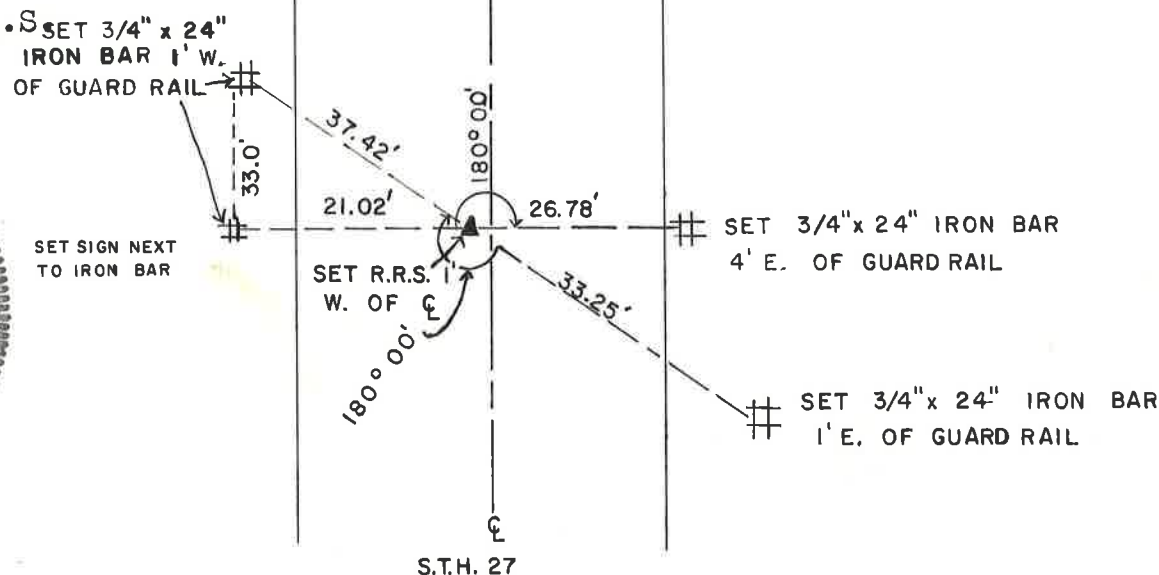
Description of corner and witness monuments, references and accessories used to perpetuate the original or re-established location of this corner:

A rail road spike was placed instead of a Harrison monument because of underlying concrete.

Witnesses to corner location:

Garold A. Sime, Crew chief, R.L.S.

Bryan Meyer



SURVEY CONTROL ORDER

Horizontal	
Vertical	

WISCONSIN COORDINATE SYSTEM

Corner	East (X)	North (Y)	Elevation (Z)	Zone
Control Sta. Name				

City, Village or Town Sparta
County of Monroe

COUNTY SURVEYOR FORM NO. 1

Pg 1

I, Harley A. Sime, do hereby certify that on the 19 day of July 19 76, I found ~~(evidence)~~ (no evidence) of the N¹/₄ corner of Sec. 26, T17 N, R 4 W, Fourth Principal Meridian, and I re-established said corner according to the Wisconsin Statutes as shown and described hereon.

Dated this 20 day of July 1976.

Harley A. Sime
COUNTY SURVEYOR

History of original corner establishment:

Fred Holden visited this corner 25 March 1903.

Description of corner evidence found:

Did not find the iron pipe described as being located at this corner. Re-set this corner by D.L. Mulock's ties to this corner from his plat of survey.

See Reverse Side For Maintenance

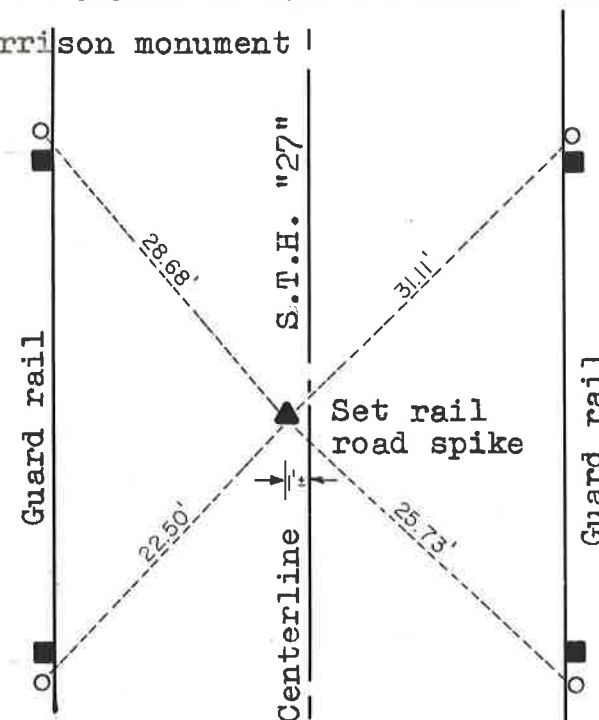
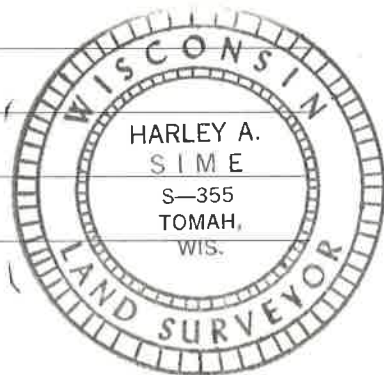
Description of corner and witness monuments, references and accessories used to perpetuate the original or re-established location of this corner:

A rail road spike was placed instead of a Harrison monument because of underlying concrete.

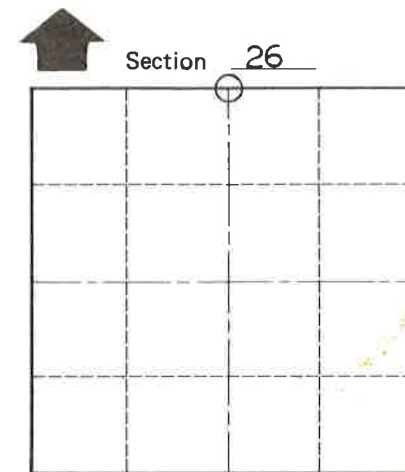
Witnesses to corner location:

Douglas J. Malliet
D.J. Malliet, Crew Chief, R.L.S.

G. Dechant



O = Set 3/4"x24" round iron bar
■ = Guard rail post 2'+ from iron bars



O = LOCATION CORNER
T 17 N R 4 W
WISCONSIN

COUNTY SURVEYOR FORM NO. 1

SURVEY CONTROL ORDER

Horizontal				
Vertical				
Corner	East (X)	North (Y)	Elevation (Z)	Zone
Control Sta. Name				

City, Village or Town of Sparta

County of Monroe