

# 83

**U.S. PUBLIC LAND CORNER  
MAINTENANCE**

**Corner ID : NW Sec.25, T17N-R4W  
21704230000**

<u>DATE</u>	<u>CREW</u>	<u>MONUMENT TYPE</u>
December 7, 2018	Zachariah P. Dechant Gary L. Dechant	Set Nail from 1986 ties; 2" angle iron in concrete to east 32.94' & 54.48' north of north rim of manhole. Measured 2642.36' to chiselled cross at E1/4 Sec. 23. Recorded as 2642.43' in Vol 14 CSM P 101.

References:

	<u>Bearing</u>	<u>Distance</u>
1) Existing 2" angle iron in concrete in fence running east	East	32.94'
2) Set 3/4"x24" round iron bar, down 6", 4' east of fence, 39.45' south of reference marker #1	S53E	54.27'
3) Set 3/4"x24" round iron bar, 1' east of chain link fence corner	West	48.38'
4) Set 3/4"x24" round iron bar, 5' east of chain link fence, 10' west of west edge sidewalk	N53W	65.42'

Corner and reference markers set on straight lines.



CERTIFICATE

I, Garold A. Sime, do hereby certify that on the 21st day of August 1986, I found (evidence) ~~(no evidence)~~ of the NW corner of Sec. 25, T 17 N, R 4W Fourth Principal Meridian, and I re-established said corner according to the Wisconsin Statutes as shown and described hereon.

Dated this 29th day of Dec 19 86.

Garold A. Sime

Deputy County Surveyor  
Title

CERTIFIED LAND CORNER

History of corner establishment since Original Government Survey

\*See previous land corner record

Description of corner evidence found:

#Found existing harrison monument down 5" and referenced same

No. 83

Pg. 3

**See Reverse Side For Maintenance**

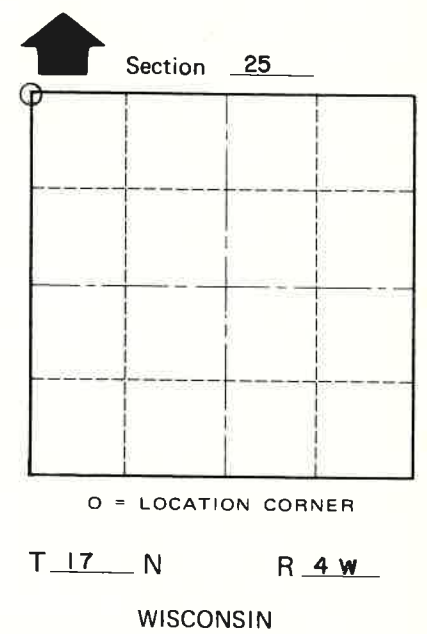
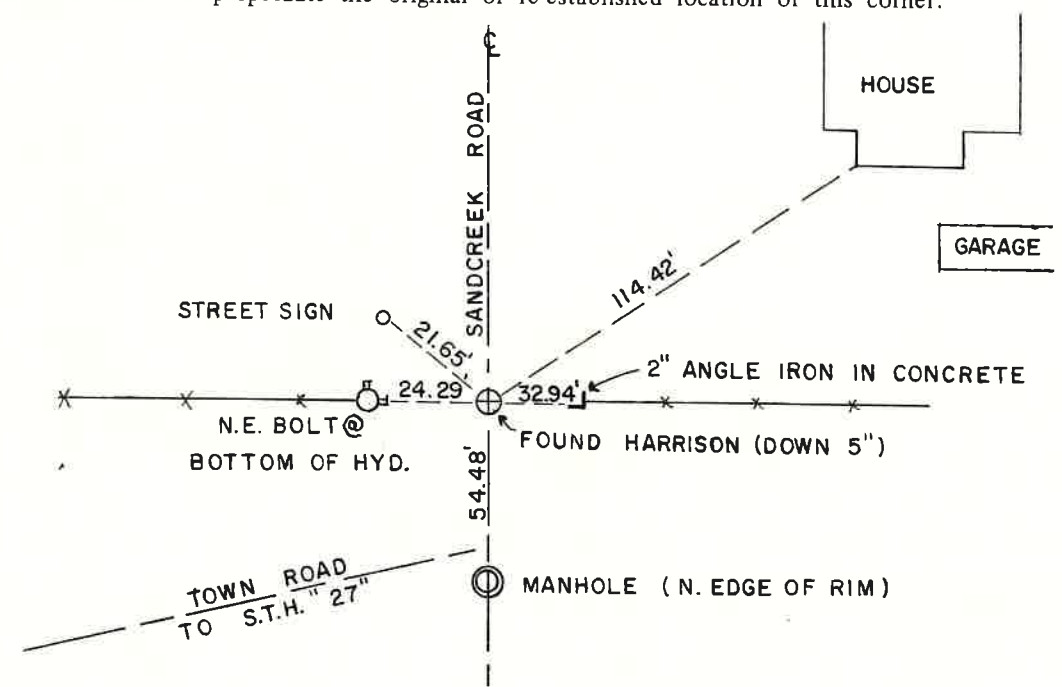
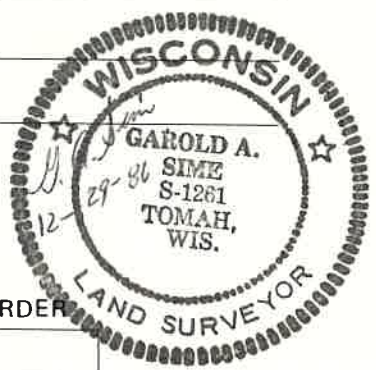
Description of corner and witness monuments, references and accessories used to perpetuate the original or re-established location of this corner:

Witnesses to corner location:

Garold A. Sime, R.L.S.

Dallas Wilhite

Joel Tralmer



SURVEY CONTROL ORDER

Horizontal	_____
Vertical	_____

WISCONSIN COORDINATE SYSTEM

Corner	East (X)	North (Y)	Elevation (Z)	Zone
Control Sta. Name				

~~City or Town~~ or Town Sparta  
County of Monroe

COUNTY SURVEYOR FORM NO. 1

CERTIFICATE

I, William C. Jung, do hereby certify that on the 6th day of July 1981, I found (evidence); ~~(no evidence)~~ of the SW corner of Section 24, T17 N, R 4 W Fourth Principal Meridian, and I re-established said corner according to the Wisconsin Statutes as shown and described hereon.

Dated this 8th day of July 1981.  
William C. Jung, R.L.S. 1323  
County Surveyor's Office  
Title

CERTIFIED LAND CORNER

No. 83  
P3 2

History of corner establishment since Original Government Survey

Fred Holden set a stake in the center of the highway on the 15<sup>th</sup> of August 1902.  
Fred Zietlow replaced an existing R.R. spike with a 3/4"x24" round iron bar on May 27, 1969.  
Douglas Malliet replaced an existing round iron bar with a Harrison monument on July 24, 1975.

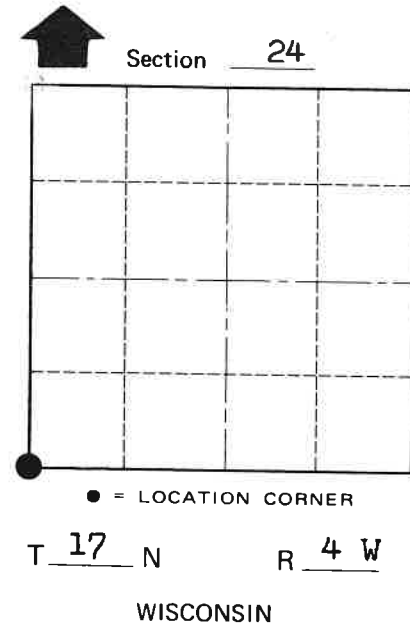
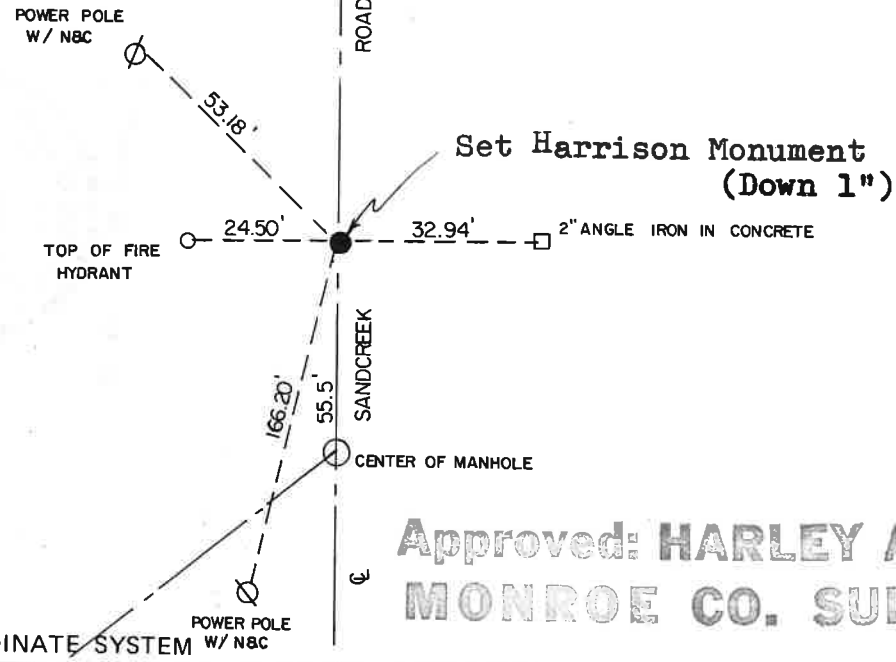
Description of corner evidence found:

The Harrison monument set by D. Malliet was destroyed due to road construction. We reset the corner from Malliet's old ties and some new ties were also taken. Greg Hofmeister used this corner in his Plat of Hoeschler's Greendale Manor in June of 1980.

Description of corner and witness monuments, references and accessories used to perpetuate the original or re-established location of this corner:

Witnesses to corner location:

W. Jung *William C. Jung*  
C. Pietz



SURVEY CONTROL ORDER

Horizontal \_\_\_\_\_  
Vertical \_\_\_\_\_

Corner	East (X)	North (Y)	Elevation (Z)	Zone
Control Sta. Name				

Approved: **HARLEY A. SIME**  
**MONROE CO. SURVEYOR**

City, ~~Village or Town~~ Sparta  
County of Monroe

COUNTY SURVEYOR FORM NO. 1

CERTIFICATE

I, Harley A. Sime, do hereby certify that on the 24 day of July 1975, I found (evidence) (~~no evidence~~) of the N.W. corner of Section 25, T17 N, R 4W, Fourth Principal Meridian, and I re-established said corner according to the Wisconsin Statutes as shown and described hereon.

Dated this 22 day of Jan. 1976.

Harley A. Sime  
County Surveyor  
Title

CERTIFIED LAND CORNER

No. 83  
Pg. 1

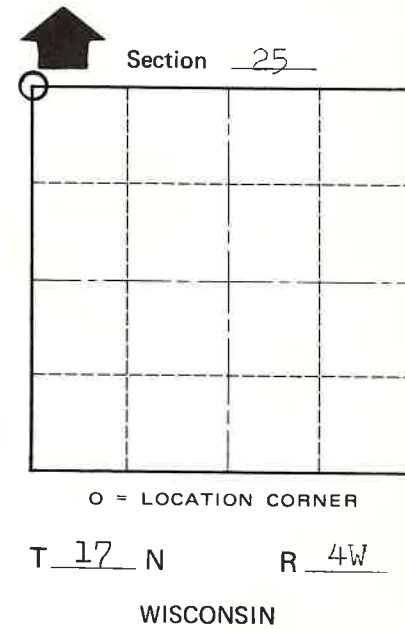
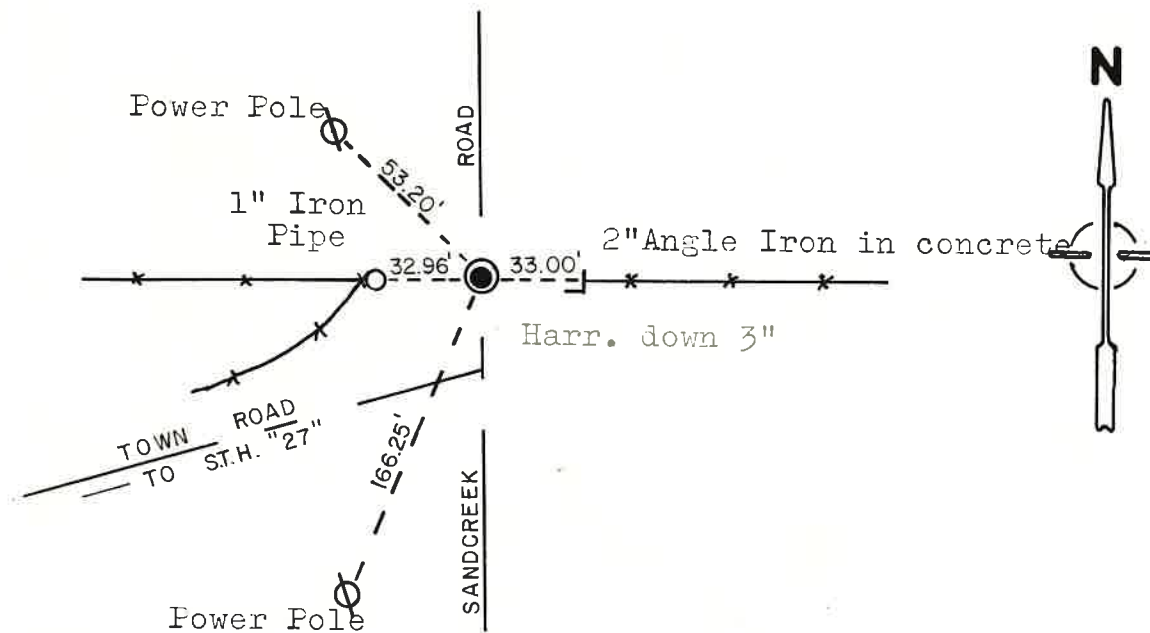
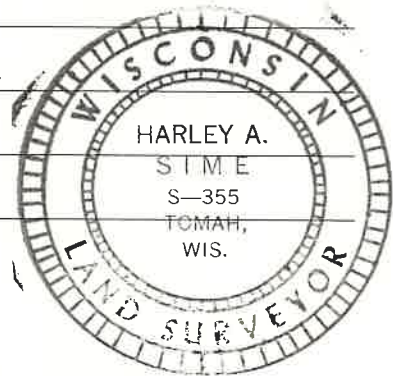
History of original corner establishment:  
Fred Holden set a stake in the center of the highway 15 Aug. 1902.

Description of corner evidence found:  
Fred Zietlow replaced an existing railroad spike with a 3/4"x24" round iron bar 27 May 1969. Set a Harrison monument in place of iron bar.

Description of corner and witness monuments, references and accessories used to perpetuate the original or re-established location of this corner:

Witnesses to corner location:  
D. Malliet - Crew Chief, R.L.S.

D. Dade  
T. Jeatran



SURVEY CONTROL ORDER

Horizontal	_____
Vertical	_____

WISCONSIN COORDINATE SYSTEM

Corner	East (X)	North (Y)	Elevation (Z)	Zone
Control Sta. Name				

City, Village or Town Sparta  
County of Monroe

COUNTY SURVEYOR FORM NO. 1