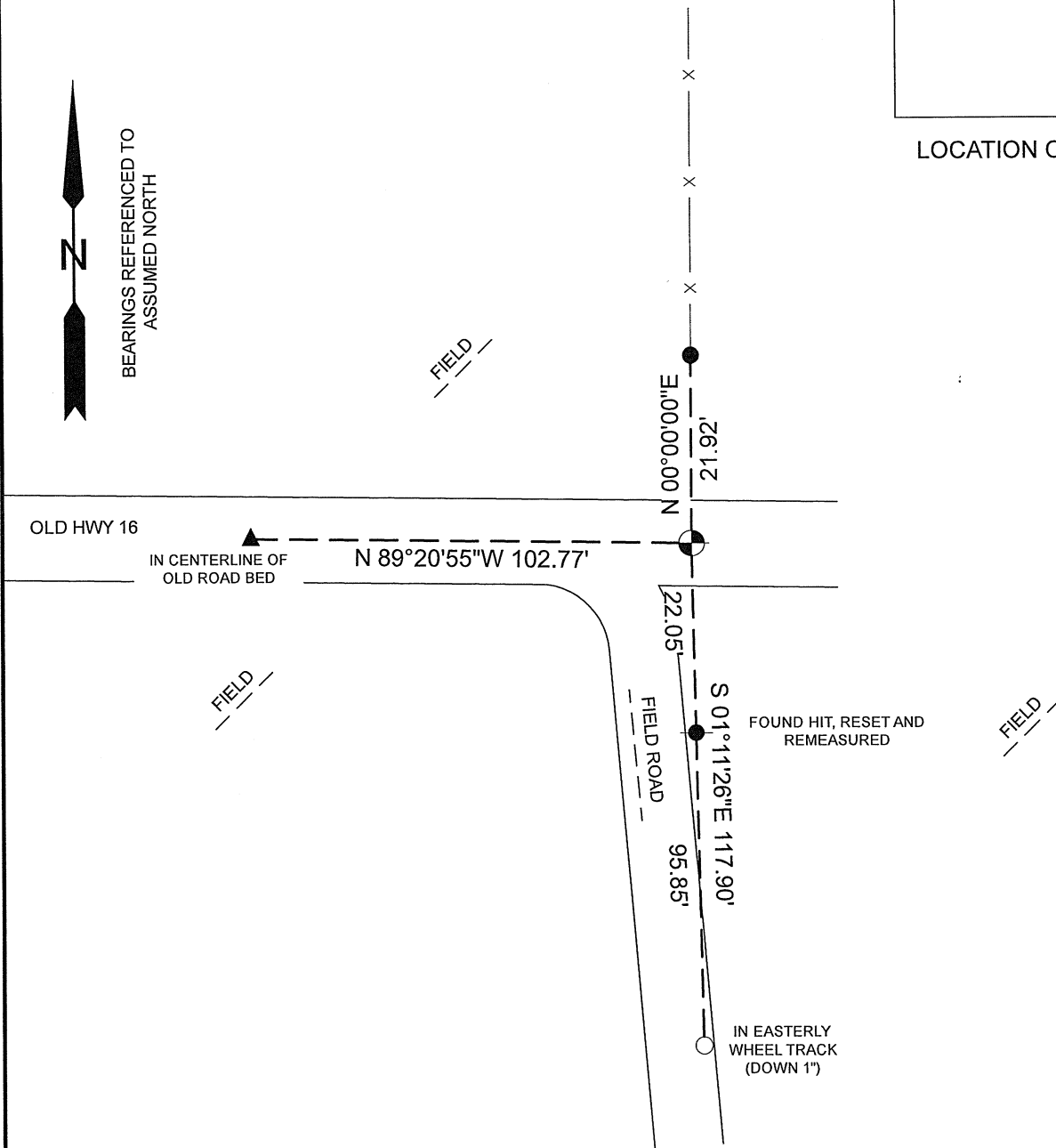
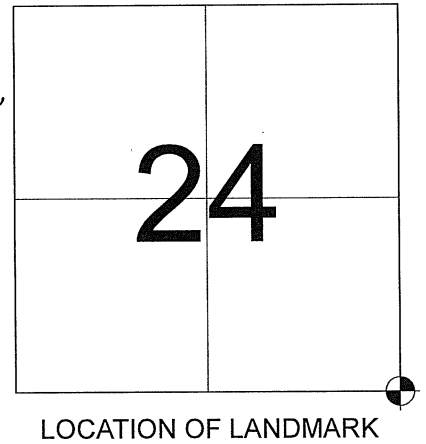


# MAINTENANCE- PUBLIC LAND SURVEY MONUMENT RECORD

## TIE SHEET UPDATE-21705240000 (LA CROSSE COUNTY INDEX 105H)

2011-40

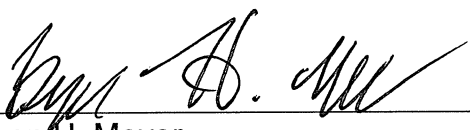
Pete Follansbee and I performed maintenance work on this corner on June 24, 2011. We found the Harrison marker of record at the corner in an old roadway. We did not find any of H. Sime's ties and established 4 new ties as shown below.



### LEGEND

- HARRISON MARKER
- SET 3/4"X24" IRON REBAR (1.50lbs/ft)
- FOUND 1" O.D. IRON PIPE (PINCHED)
- SET 2" MAG NAIL
- FOUND 3/4" IRON BAR



  
 Bryan H. Meyer  
 La Crosse County Surveyor

  
 Date

CORNER ID:  
 21705240000

CERTIFICATE

I, Harley A. Sime, do hereby certify that on the 25 day of September 19 75, I found (evidence) (no evidence) of the NW corner of Sec. 30, T 17 N, R 4 W, Fourth Principal Meridian, and I re-established said corner according to the Wisconsin Statutes as shown and described hereon.

Dated this 5 day of March 19 76.

Harley A. Sime  
COUNTY SURVEYOR  
Title

CERTIFIED LAND CORNER

No. 93

21705240000

History of original corner establishment:

Description of corner evidence found:

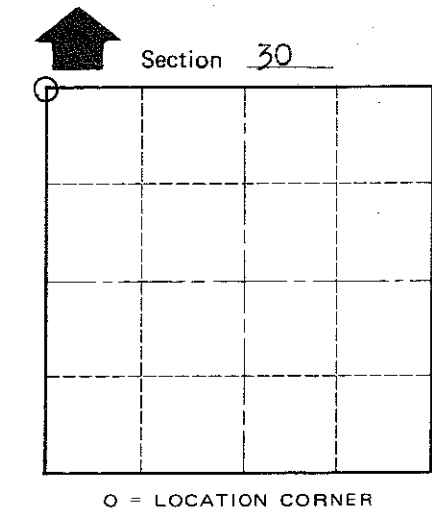
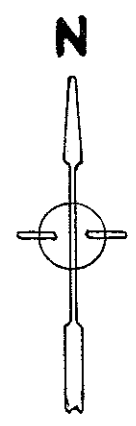
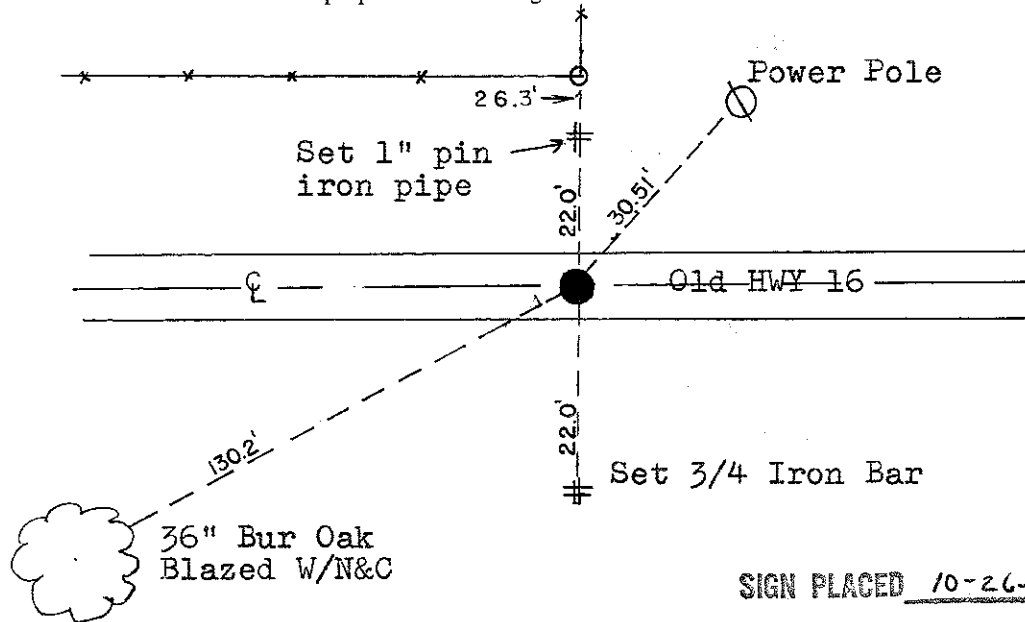
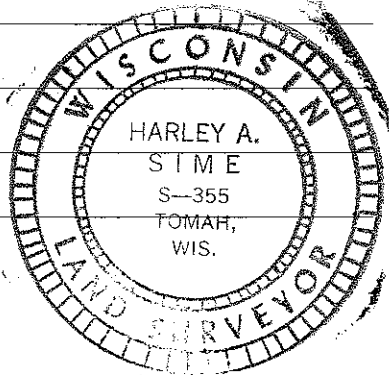
Accepted the existing field conditions. The aerial photo shows the remaining portion of old Hwy "16" to be on the section line. This location matches the rest of the section well.

Description of corner and witness monuments, references and accessories used to perpetuate the original or re-established location of this corner:

Set Harrison, Down 2"

Witnesses to corner location:

Douglas J. Malliet  
D.J. Malliet - Crew Chief RLS  
A. Lueck



T 17 N R 4 W

WISCONSIN

SIGN PLACED 10-26-93

COUNTY SURVEYOR FORM NO. 1

SURVEY CONTROL ORDER

Horizontal \_\_\_\_\_  
Vertical \_\_\_\_\_

WISCONSIN COORDINATE SYSTEM

Corner	East (X)	North (Y)	Elevation (Z)	Zone
Control Sta. Name				

City, Village or ~~Town~~ Sparta

County of Monroe