

CERTIFICATE

CERTIFIED LAND CORNER

No. 86

21704220020

I, Harley A. Sime, do hereby certify that on the 24 day of June 19 76, I found ~~(evidence)~~ (no evidence) of the S¹/₄ corner of Sec. 22, T 17 N, R 4 W, Fourth Principal Meridian, and I re-established said corner according to the Wisconsin Statutes as shown and described hereon.

Dated this 8 day of July 19 76.

Harley A. Sime
 COUNTY SURVEYOR
 Title

History of original corner establishment:

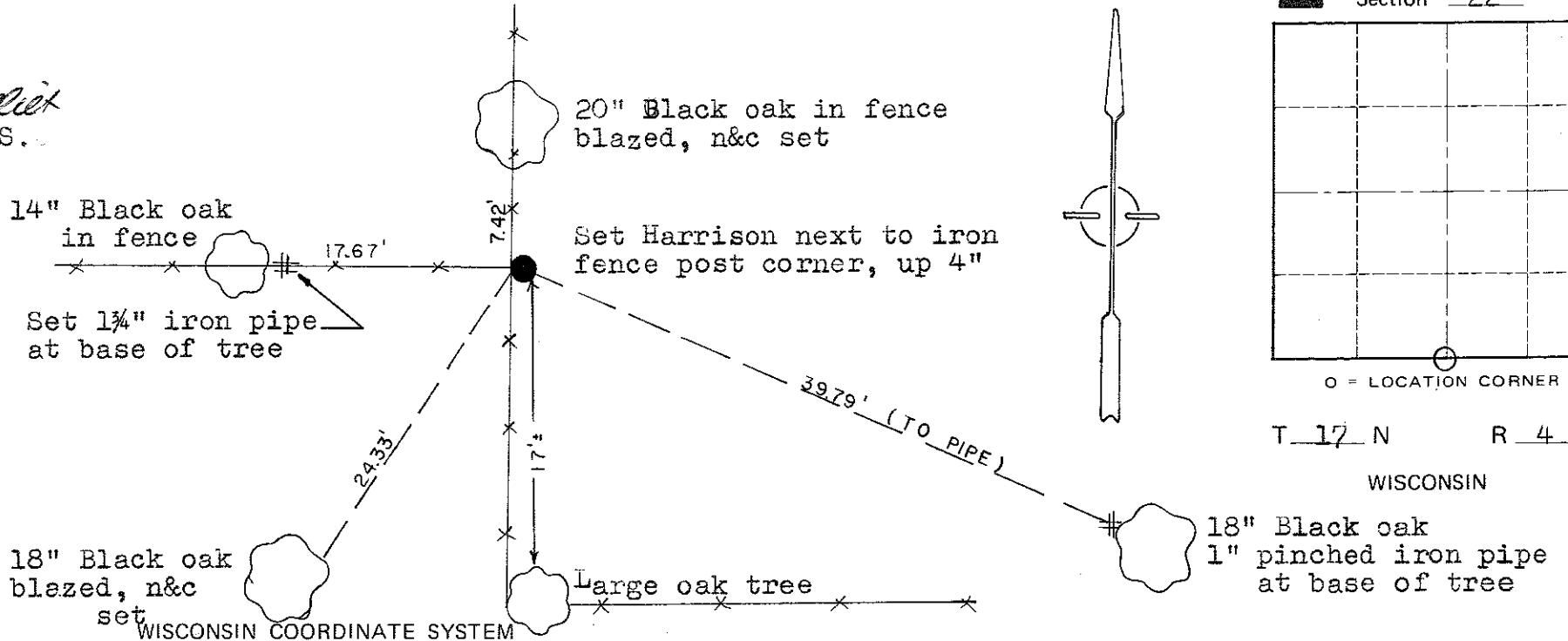
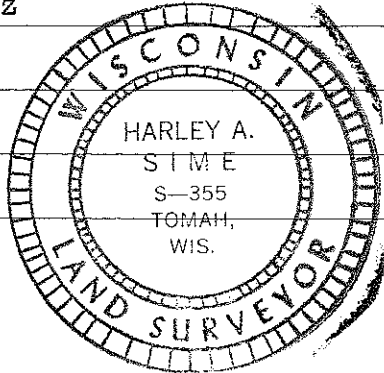
Description of corner evidence found:

Accepted existing field conditions. There is a 17'± jog in the East-West fence, however, where the fence corners at the iron fence post, is where the corner is according to the farmer who owns the land North & East of this corner. The corner was set at the iron fence post corner.

Description of corner and witness monuments, references and accessories used to perpetuate the original or re-established location of this corner:

Witnesses to corner location:

Douglas G. Malliet
 D.J. Malliet, Crew Chief, R.L.S.
 C. Pietz



SURVEY CONTROL ORDER

Horizontal	_____
Vertical	_____

Corner	East (X)	North (Y)	Elevation (Z)	Zone
Control Sta. Name				

City, Village or Town of Sparta
 County of Monroe

COUNTY SURVEYOR FORM NO. 1