

76 B

**U.S. PUBLIC LAND CORNER
MAINTENANCE**

**Corner ID : C1/4 Sec.21, T17N-R4W
21704212020**

<u>DATE</u>	<u>CREW</u>	<u>MONUMENT TYPE -----</u>
December 5, 2018	Zachariah P. Dechant Gary L. Dechant	Existing mag nail, 7' south & 2' west of intersection of Hamlet Avenue & Hammer Road, Fits 1976 ties.

<u>References:</u>	<u>Bearing</u>	<u>Distance</u>
1) Set 3/4"x24" round iron bar, down 10" in field	N41E	65.83'
2) Set 3/4"x24" round iron bar, down 3", 23.2' south of NW corner & 1' west of chain lk fence S35E		60.00'
3) Set 3/4"x24" round iron bar, down 10" in field	S41W	49.94'
4) Existing 3/4" round iron bar, down 4", 4' west of SE fence corner of pasture/cow yard.	N35W	48.85'

Corner and reference points set on straight lines.



CERTIFICATE

UPDATED
CERTIFIED LAND CORNER

No. 76B
970
page 2

I, Harley A. Sime, do hereby certify that on the 28th day of January 1976, I found (evidence) ~~(no evidence)~~ of the Center 1/4 corner of Section 21, T 17 N, R 4 W, Fourth Principal Meridian, and I re-established said corner according to the Wisconsin Statutes as shown and described hereon.

History of original corner establishment:

In April, 1895, Henry Schroeder surveyed the NW 1/4 of Section 21. In this survey he went from the N 1/4 cor. of Sec. 21 South to an existing post at the C 1/4 cor. of Sec. 21. He then placed a stone at this corner.

Description of corner evidence found:

After resurveying Section 21, and evaluating existing monuments, field occupation, Schroeder's notes, and aerial photos, it is the opinion of this surveyor that the Center 1/4 corner that Schroeder found had been established in an irregular manner, probably by one of the two methods set down by law in 1860 and 1862 and later change. Field measurements show this to have been highly probable. The C 1/4 cor. was thus established using Schroeder's notes and present field evidence. See the miscellaneous sheet following this corner sheet for more data concerning this matter.

Dated this 29th day of Jan. 1976.

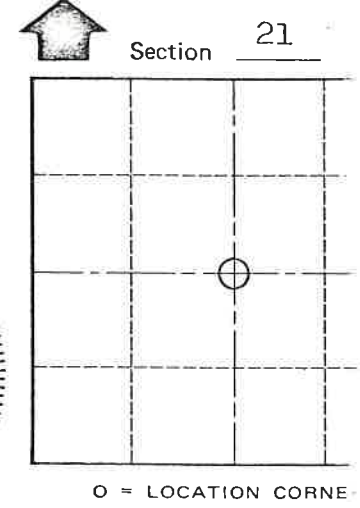
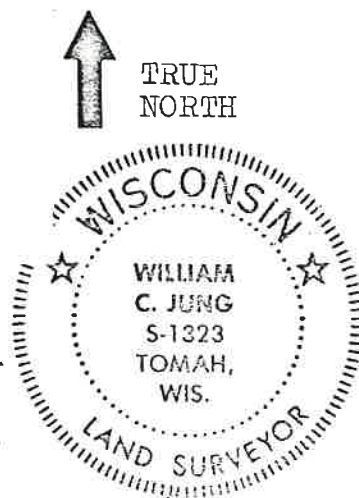
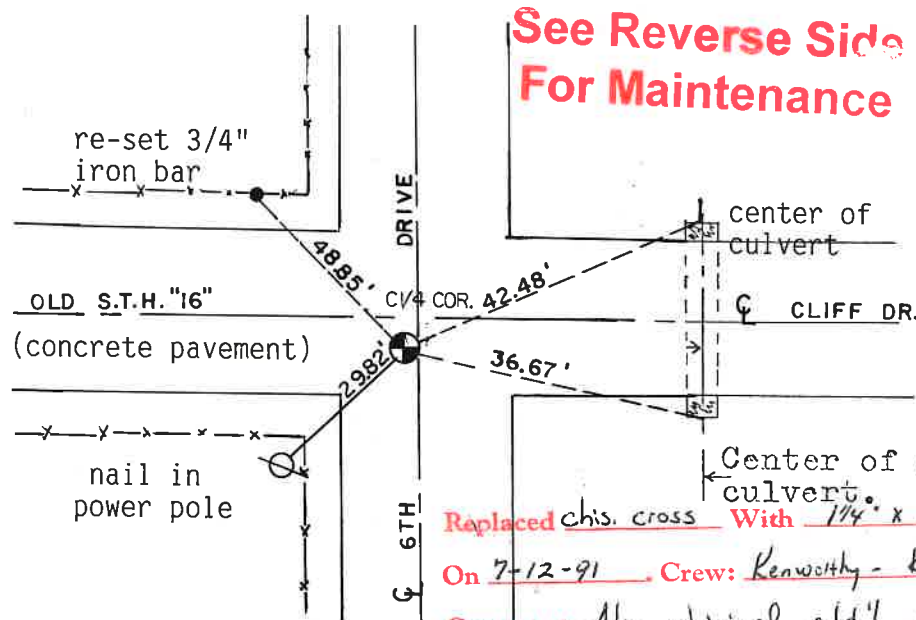
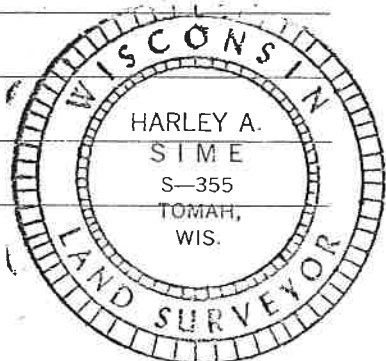
Harley A. Sime
County Surveyor
Title

Note: This corner falls under reinforced concrete, so no attempt was made to dig for the stone at this time. The corner as set however in our opinion is correct.

Description of corner and witness monuments, references and accessories used to perpetuate the original or re-established location of this corner:

The corner is a chiselled cross ("x") in the concrete.
There is a P.K. nail N16°14'15"E, 8.0 ft. from the cor.
The P.K. is merely a survey point.
Witnesses to corner location:

W.C. Jung - Crew Chief W.C. Jung
D. Malliet



T 17 N R 4 W
WISCONSIN

Replaced chis. cross With 1 1/4" x 12" Iron Bar
On 7-12-91 Crew: Kenworthy - Kostka
Comments Also obtained add'l ties as shown H. Sime

SURVEY CONTROL ORDER

Horizontal	_____
Vertical	_____

WISCONSIN COORDINATE SYSTEM

Corner	East (X)	North (Y)	Elevation (Z)	Zone
Control Sta. Name				

City, Village or Town Sparta
County of Monroe

COUNTY SURVEYOR FORM NO. 1

CERTIFICATE

CERTIFIED LAND CORNER

No. 76 B

I, Harley A. Sime, do hereby certify that on the 28th day of January 1976, I found (evidence) ~~(no evidence)~~ of the Center 1/4 corner of Section 21, T 17 N, R 4 W, Fourth Principal Meridian, and I re-established said corner according to the Wisconsin Statutes as shown and described hereon.

History of original corner establishment:

In April, 1895, Henry Schroeder surveyed the NW 1/4 of Section 21. In this survey he went from the N 1/4 cor. of Sec. 21 South to an existing post at the C 1/4 cor. of Sec. 21. He then placed a stone at this corner.

Description of corner evidence found:

After resurveying Section 21, and evaluating existing monuments, field occupation, Schroeder's notes, and aerial photos, it is the opinion of this surveyor that the Center 1/4 corner that Schroeder found had been established in an irregular manner, probably by one of the two methods set down by law in 1860 and 1862 and later changed. Field measurements show this to have been highly probable. The C 1/4 cor. was thus established using Schroeder's notes and present field evidence. See the miscellaneous sheet following this corner sheet for more data concerning this matter.

Dated this 29th day of Jan. 1976.

Harley A. Sime
County Surveyor
Title

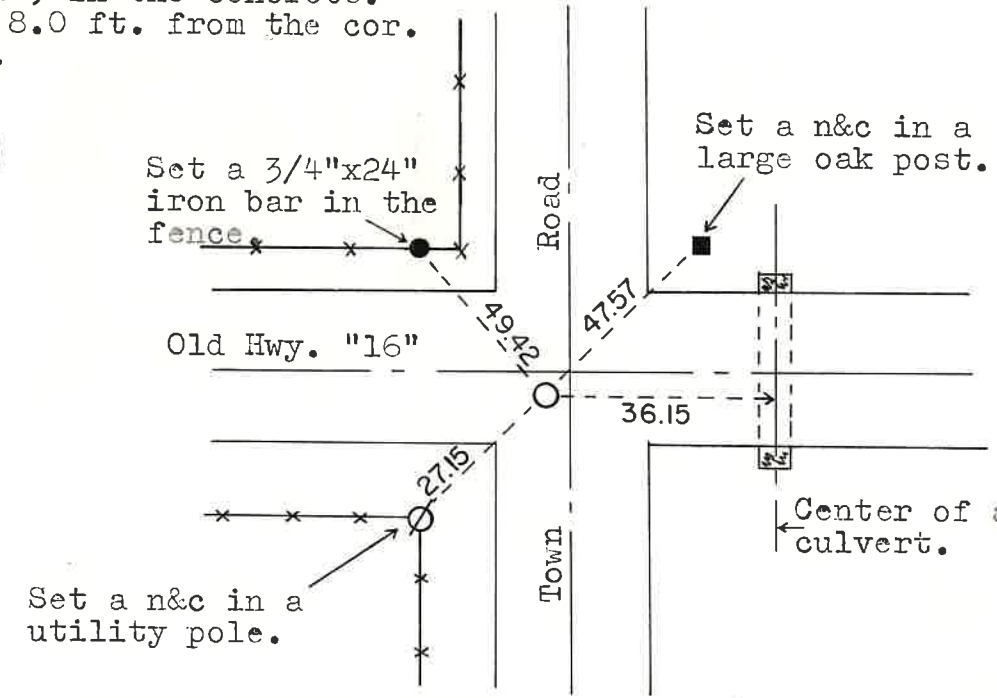
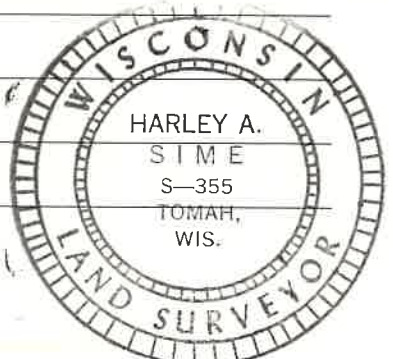
Note: This corner falls under reinforced concrete, so no attempt was made to dig for the stone at this time. The corner as set however in our opinion is correct.

Description of corner and witness monuments, references and accessories used to perpetuate the original or re-established location of this corner:

The corner is a chiselled cross("x") in the concrete.
There is a P.K. nail N16°14'15"E, 8.0 ft. from the cor.
The P.K. is merely a survey point.

Witnesses to corner location:

W.C. Jung - Crew Chief W.C. Jung
D. Malliet



Section 21

TRUE NORTH

O = LOCATION CORNER

T 17 N R 4 W

WISCONSIN

See Reverse Side For Maintenance

City, Village or Town Sparta
County of Monroe

COUNTY SURVEYOR FORM NO. 1

SURVEY CONTROL ORDER

Horizontal _____
Vertical _____

WISCONSIN COORDINATE SYSTEM

Corner	East (X)	North (Y)	Elevation (Z)	Zone
Control Sta. Name				