

CERTIFIED LAND CORNER

No. 88 (2)

21704210020

CERTIFICATE

I, Bryan H. Meyer, do hereby certify that on the 19th day of July, 2007, I found (evidence) ~~(no evidence)~~ of the North 1/4 corner of Section 28, T 17 N, R 4 W Fourth principle Meridian, and I re-established said corner according to the Wisconsin Statutes as shown and described hereon.

Dated this 19th day of July, 2007

Bryan H. Meyer
Registered Land Surveyor
Title

Description of corner and witness monuments, references and accessories used to perpetuate the original or re-established location of this corner:

Witnesses to corner location:

Bryan H. Meyer
Mitchell Sime

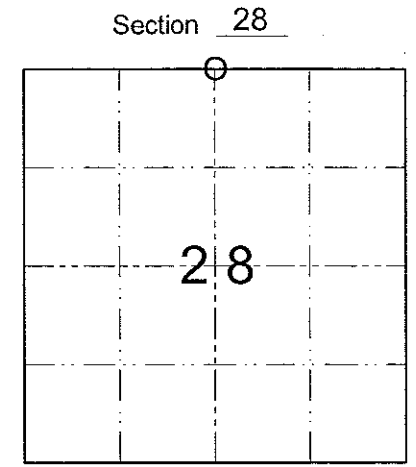
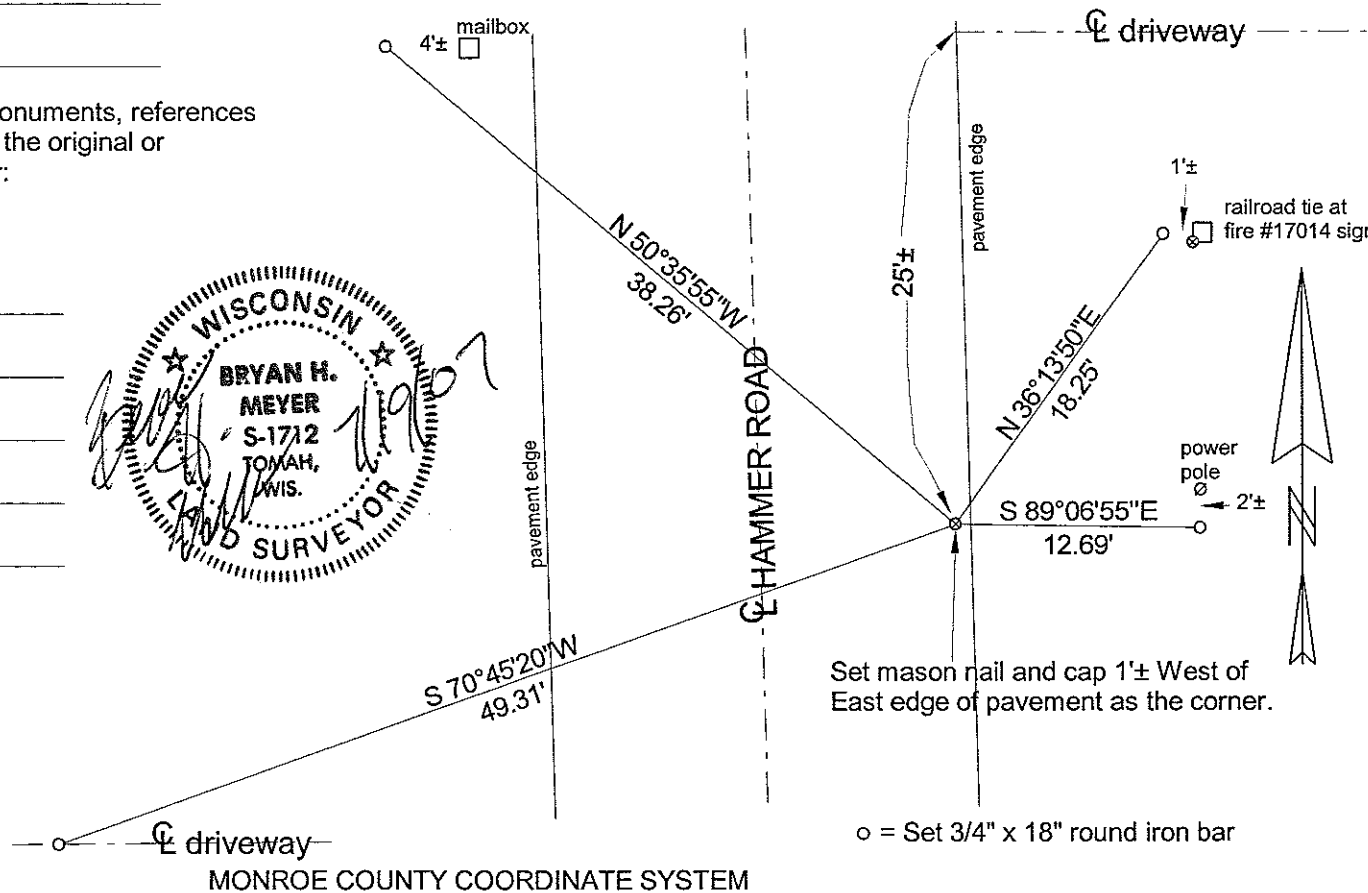


History of corner establishment since Original Government Survey

Fred Holden, under the direction of Hamilton LaRue, reestablished this corner in November of 1899. Bill Jung, under the direction of Harley Sime, reestablished this corner in January of 1976.

DESCRIPTION OF CORNER EVIDENCE FOUND:

Road construction destroyed this corner location sometime during 2006. Remnants of the Harrison marker may well be left buried well below the new road surface. It was decided not to dig through the new road surface to look. Instead, the corner location was reestablished using data shown on surveys to the West and South. A nail and cap were set and new ties taken as shown below.



O = Corner Location
T 17 N R 4 W
WISCONSIN

SURVEY CONTROL ORDER

Horizontal				
Vertical				
Corner	Northing	Easting	Elevation	
Control Station Name				

City, Village or Town of Sparta
County of Monroe

CERTIFICATE

CERTIFIED LAND CORNER

I, Harley A. Sime, do hereby certify that on the 28th day of January 19 76, I found (evidence) (~~no evidence~~) of the S 1/4 corner of Section 21, T 17 N, R 4 W Fourth Principal Meridian, and I re-established said corner according to the Wisconsin Statutes as shown and described hereon.

Dated this 29th day of Jan. 19 76.

Harley A. Sime
County Surveyor
Title

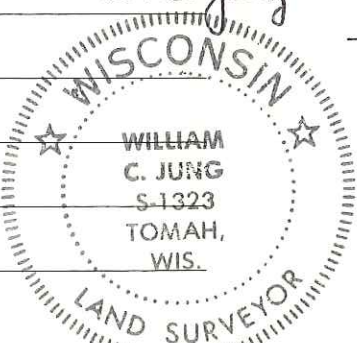
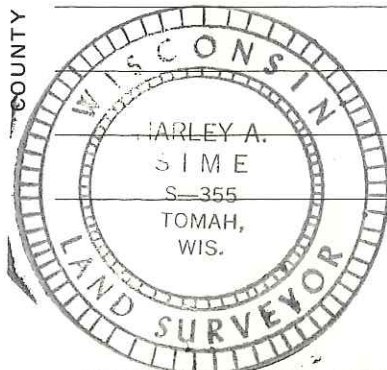
Note: See cor. sheet #77C for further information.

Description of corner and witness monuments, references and accessories used to perpetuate the original or re-established location of this corner:

Set a 3/4"x24" iron bar on the East edge of the road, 10 ft. East of the centerline.

Witnesses to corner location:

W.C. Jung - Crew Chief W.C. Jung
D. Malliet



Holden's bearing tree of 1899, 40" oak partially cut down. Measured from inside stump.

History of original corner establishment:

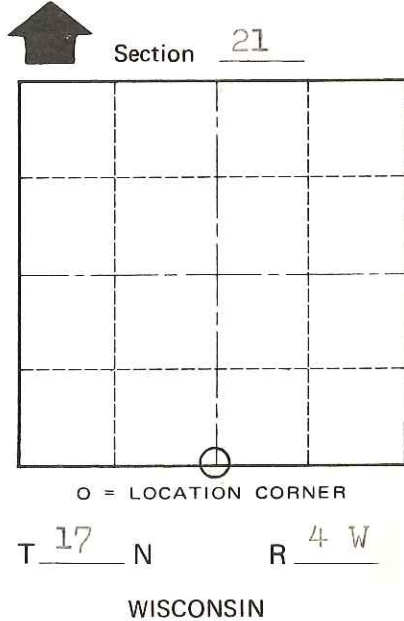
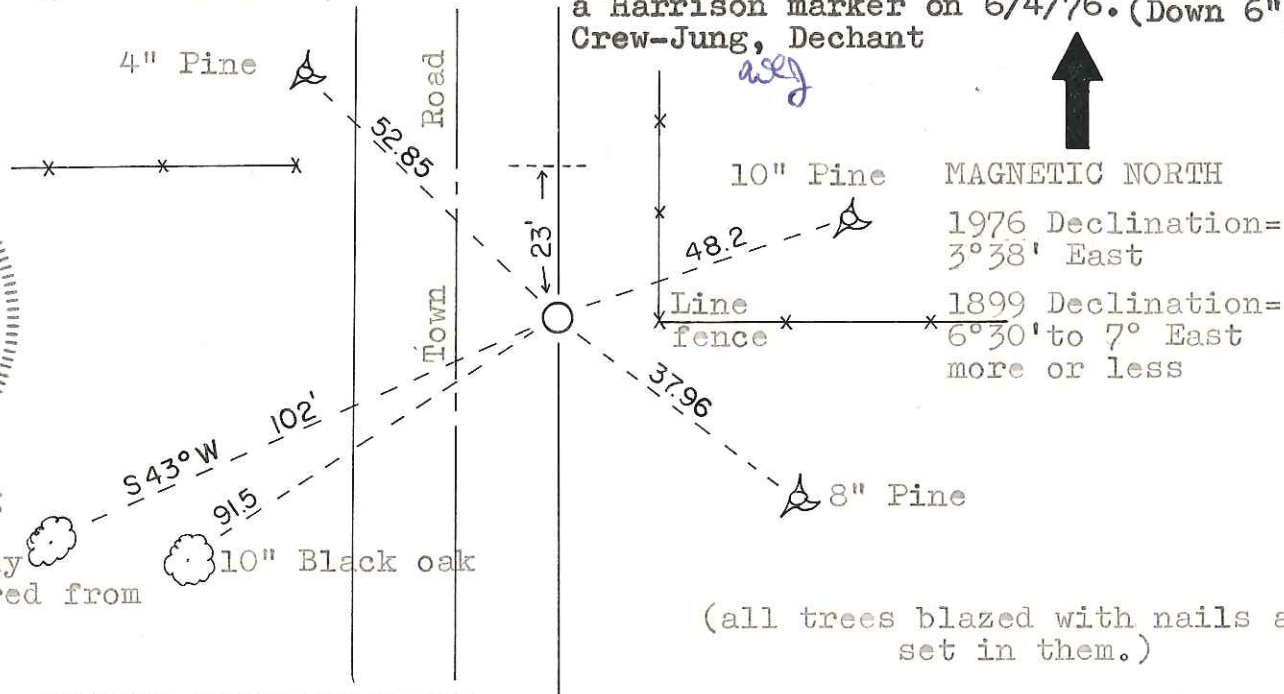
Fred Holden, under the direction of Hamilton La Rue, set this corner in November of 1899.

Description of corner evidence found:

Set the corner on line with the line fence to the East and at the record distance from the S.E. corner of Section 21. Found an old partially cut down oak, diameter of 40", to the S.W. that fits Holden's distance and bearing (after allowing for the difference in magnetic declination) of 1899. With the corner set as such, the bearing from the S1/4 cor. to the Center1/4 cor. of Sec. 21 is almost parallel to the bearing of the East line of the S.E.1/4 of Sec. 21.

Note: If there is ever found a nail in the center of the road with iron pipes 13.15' West and 22' East, disregard them as they are merely survey points used in a previous surveys. They would be about 8' North of the corner.

IMPORTANT! Replaced the 3/4" bar with a Harrison marker on 6/4/76. (Down 6") Crew-Jung, Dechant



(all trees blazed with nails and caps set in them.)

SURVEY CONTROL ORDER

Horizontal _____
Vertical _____

WISCONSIN COORDINATE SYSTEM

Corner	East (X)	North (Y)	Elevation (Z)	Zone
Control Sta. Name				

City, Village or Town Sparta

County of Monroe

COUNTY SURVEYOR FORM NO. 1