

CERTIFICATE

CERTIFIED LAND CORNER

No. 75E

21704203010

I, Harley A. Sime, do hereby certify that on the 1 day of July 19 75 I found (evidence) ~~(no evidence)~~ of the C1/16NE 1/4 corner of Section 20, T 17 N, R 4W, Fourth Principal Meridian, and I re-established said corner according to the Wisconsin Statutes as shown and described hereon.

History of original corner establishment:

Description of corner evidence found:

Dated this 22 day of Jan. 1976.

Found a 1" iron pipe that had been used in a previous survey.

Harley A. Sime  
County Surveyor  
Title

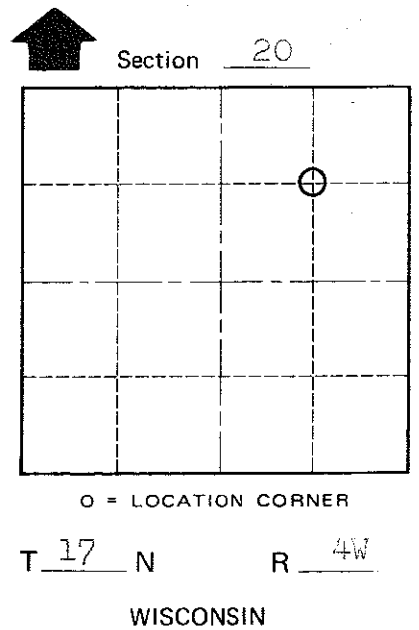
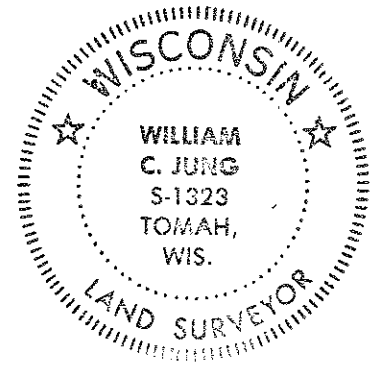
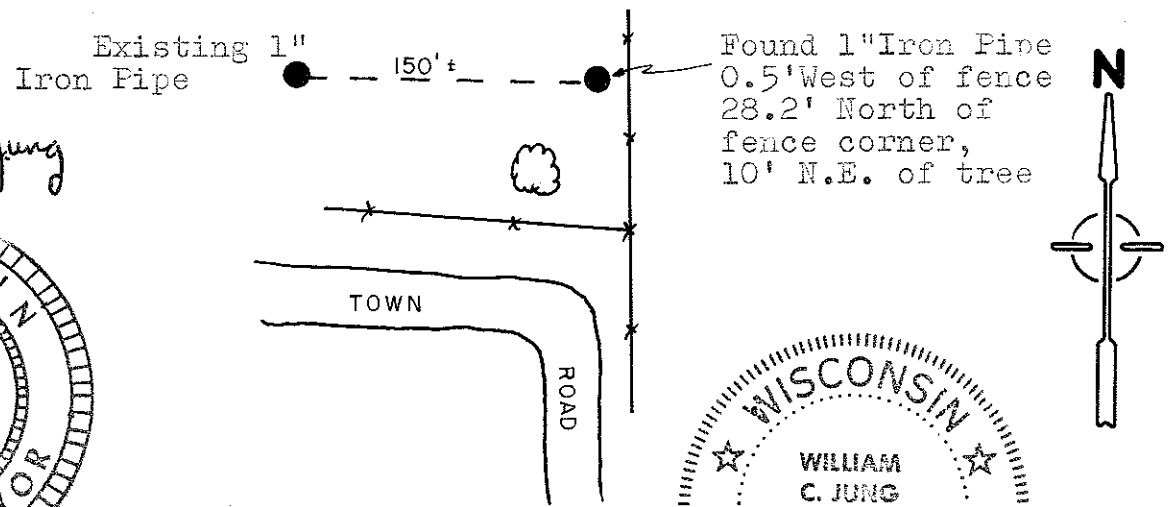
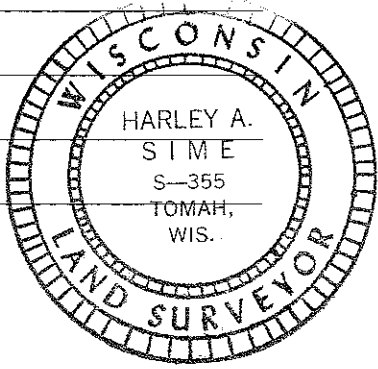
COUNTY SURVEYOR FORM NO. 1

Description of corner and witness monuments, references and accessories used to perpetuate the original or re-established location of this corner:

Existing iron pipe.

Witnesses to corner location:

W.C. Jung - Crew Chief W.C. Jung  
D. Dade  
G. Sime



SURVEY CONTROL ORDER

Horizontal	_____
Vertical	_____

WISCONSIN COORDINATE SYSTEM

Corner	East (X)	North (Y)	Elevation (Z)	Zone
Control Sta. Name				

City, Village or Town Sparta  
County of Monroe