

CERTIFICATE

CERTIFIED LAND CORNER - UPDATE

No. 76

page 3

21704202000

I, Harley A. Sime, do hereby certify that on the 4 day of April 19 75, I found (evidence) ~~(no evidence)~~ of the W 1/4 corner of Section 21, T 17 N, R 4W, Fourth Principal Meridian, and I re-established said corner according to the Wisconsin Statutes as shown and described hereon.

History of original corner establishment:

Henry Schroeder set a stone at this corner in April, 1895.

Description of corner evidence found:

Found a chiselled "x" in the center of old Hwy. "16". This corner had been used in previous surveys.

Note: This corner falls under reinforced concrete, so no attempt was made to dig for it at this time.

(See corner sheet #77C for further information.)

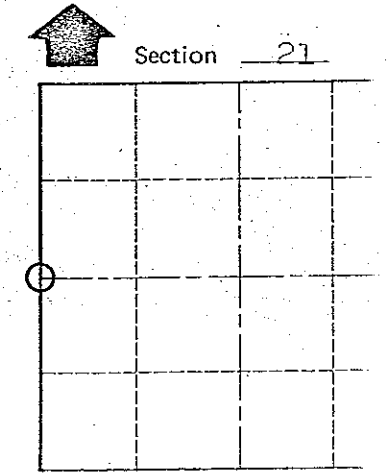
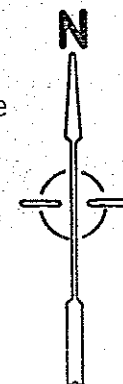
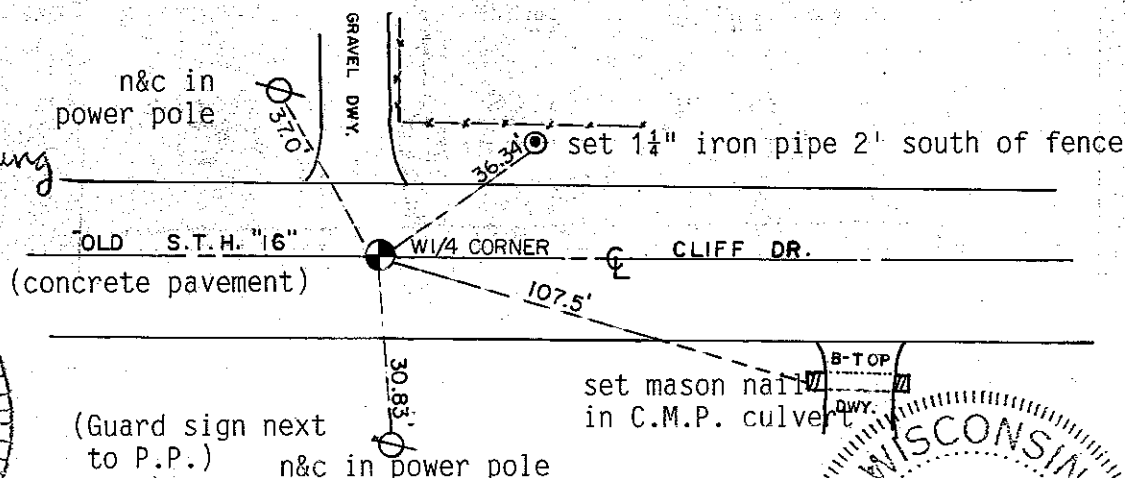
Dated this 22 day of Jan. 1976.  
[Signature]  
County Surveyor  
Title

Description of corner and witness monuments, references and accessories used to perpetuate the original or re-established location of this corner:

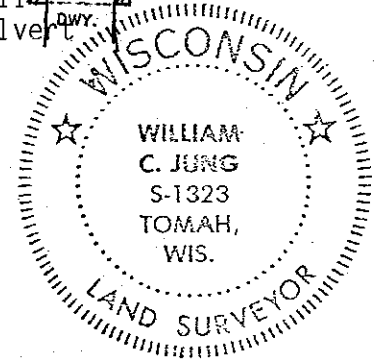
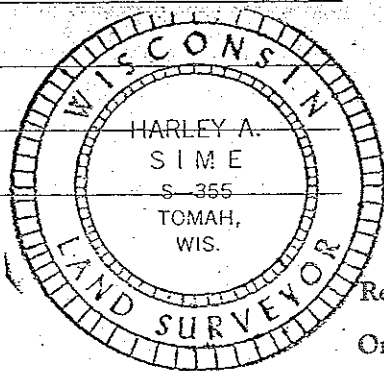
Existing chiselled cross.

Witnesses to corner location:

W.C. Jung - Crew Chief  
D. Malliet  
A. Lueck



O = LOCATION CORNER



Replaced Chis. Cross With 1 1/4" x 12" Iron Bar  
On 7-12-91. Crew: Kenworthy - Kostka  
Comments Also obtained these  
add'l ties. J. Sime

COUNTY SURVEYOR FORM NO. 1

SURVEY CONTROL ORDER

Horizontal \_\_\_\_\_  
Vertical \_\_\_\_\_

Corner	East (X)	North (Y)	Elevation (Z)	Zone
Control Sta. Name				

City, Village or Town Sparta  
County of Monroe

CERTIFICATE

CERTIFIED LAND CORNER

No. 76

I, Harley A. Sime, do hereby certify that on the 4 day of April 19 75, I found (evidence) ~~(no evidence)~~ of the W 1/4 corner of Section 21, T 17 N, R 4W, Fourth Principal Meridian, and I re-established said corner according to the Wisconsin Statutes as shown and described hereon.

Dated this 22 day of Jan. 1976.

Harley A. Sime  
County Surveyor  
Title

History of original corner establishment:

Henry Schroeder set a stone at this corner in April, 1895.

Description of corner evidence found:

Found a chiselled "x" in the center of old Hwy. "16". This corner had been used in previous surveys.

Note: This corner falls under reinforced concrete, so no attempt was made to dig for it at this time.

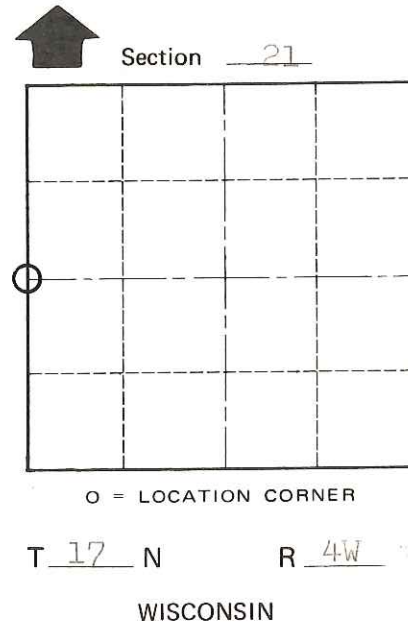
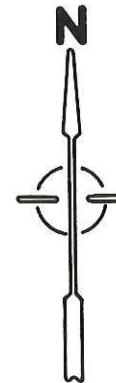
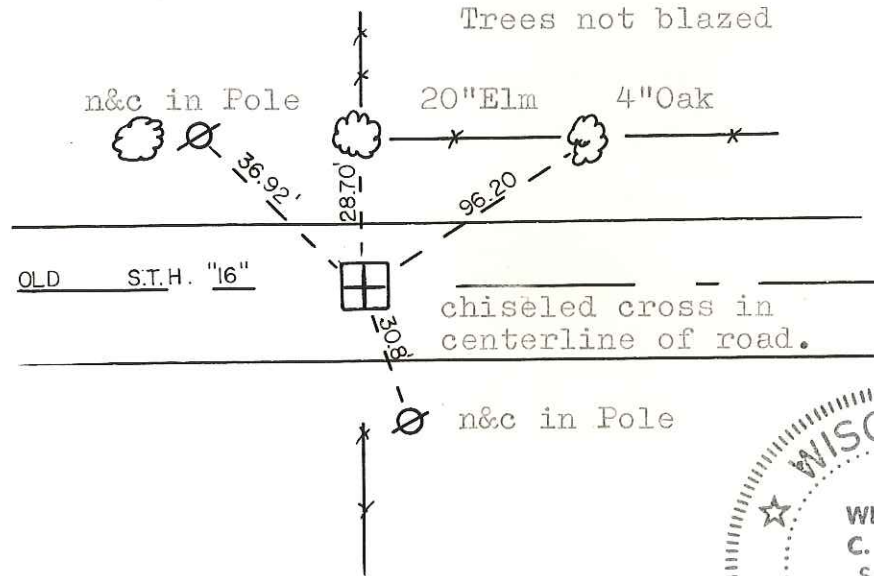
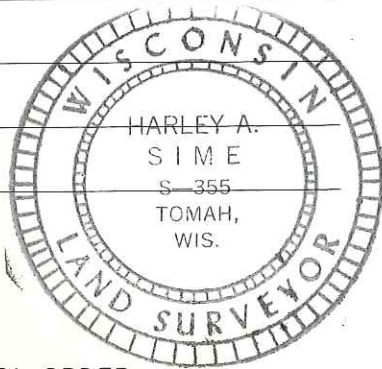
(See corner sheet #77C for further information.)

Description of corner and witness monuments, references and accessories used to perpetuate the original or re-established location of this corner:

Existing chiselled cross.

Witnesses to corner location:

W.C. Jung - Crew Chief W.C. Jung  
D. Malliet  
A. Lueck



O = LOCATION CORNER

T 17 N R 4W

WISCONSIN



SURVEY CONTROL ORDER

Horizontal	_____
Vertical	_____

WISCONSIN COORDINATE SYSTEM

Corner	East (X)	North (Y)	Elevation (Z)	Zone
Control Sta. Name				

City, Village or Town Sparta

County of Monroe

COUNTY SURVEYOR FORM NO. 1