

CERTIFICATE

CERTIFIED LAND CORNER

No. 92

21704190020

I, Harley A. Sime, do hereby certify that on the 21 day of June 19 76 I found ~~(evidence)~~ (no evidence) of the N¹/₄ corner of Sec. 30, T 17 N, R 4 W Fourth Principal Meridian, and I re-established said corner according to the Wisconsin Statutes as shown and described hereon.

Dated this 7 day of July 19 76.

Harley A. Sime

COUNTY SURVEYOR

Title

History of original corner establishment:

Schroeder visited this corner 2 Sept. 1884

Description of corner evidence found:

Accepted the existing field conditions as the best available evidence. The intersection to the East-West fence and the North-South fence to the North fit the record closing distance within a foot. I set the corner at the record distance from the NW corner of Sec. 30 and on the computed bearing of the East-West fence of the North line of the NE¹/₄ of Sec. 30.

COUNTY SURVEYOR FORM NO. 1

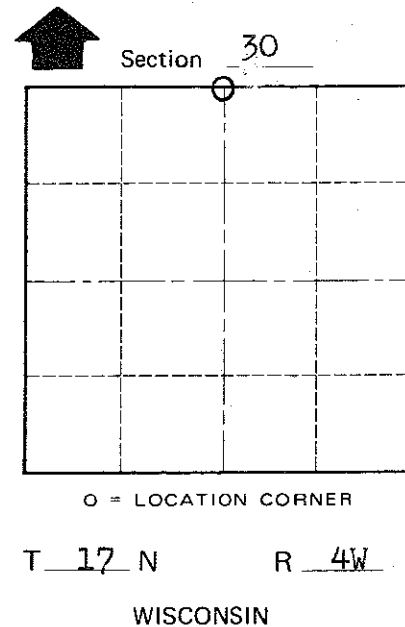
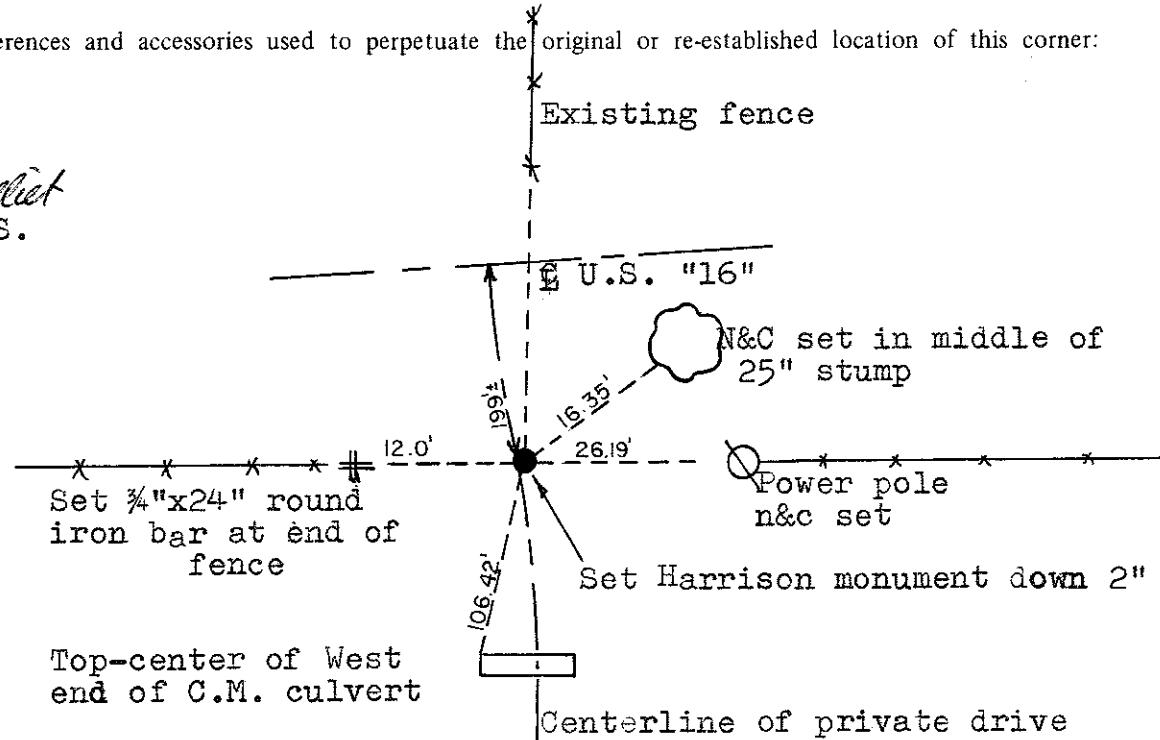
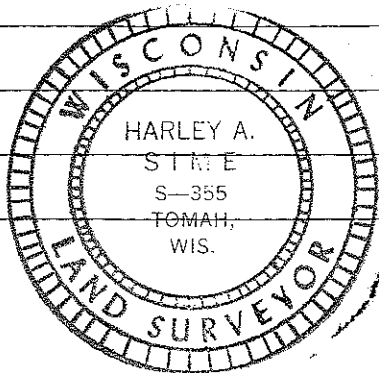
Description of corner and witness monuments, references and accessories used to perpetuate the original or re-established location of this corner:

Witnesses to corner location:

Douglas J. Malliet

D.J. Malliet Crew Chief, R.L.S.

C. Pietz



SURVEY CONTROL ORDER

Horizontal	_____
Vertical	_____

WISCONSIN COORDINATE SYSTEM

Corner	East (X)	North (Y)	Elevation (Z)	Zone
Control Sta. Name				

City, Village or Town of Sparta

County of Monroe