

CERTIFICATE

CERTIFIED LAND CORNER

No. 69

**21704170000**

I, Harley A. Sime, do hereby certify that on the 31 day of March, 1975, I found (evidence) ~~(no evidence)~~ of the S.W. corner of Section 16, T. 17 N, R. 4W, Fourth Principal Meridian, and I re-established said corner according to the Wisconsin Statutes as shown and described hereon.

History of original corner establishment:

Dated this 22 day of Jan., 1976.

Description of corner evidence found:

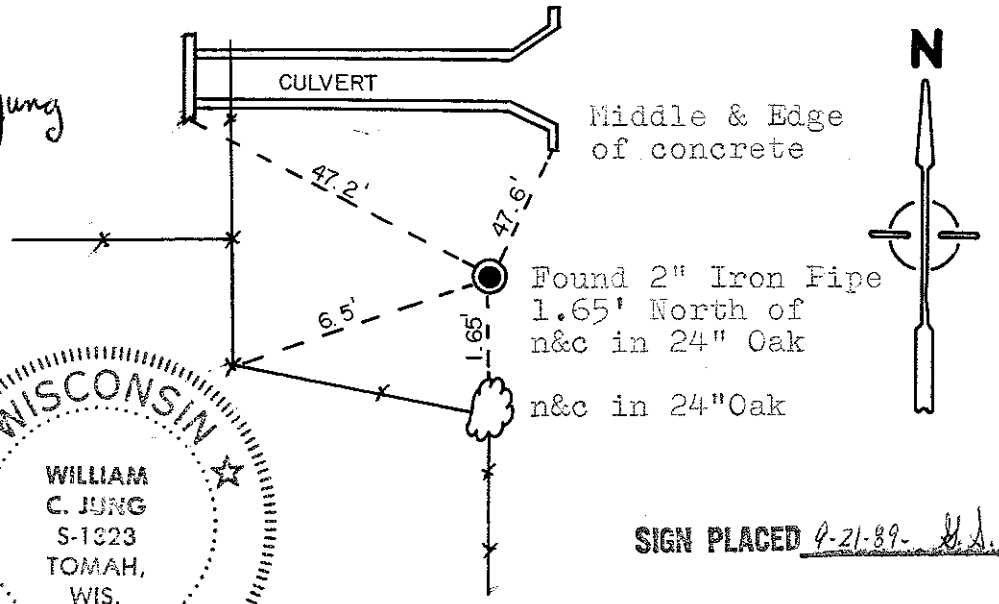
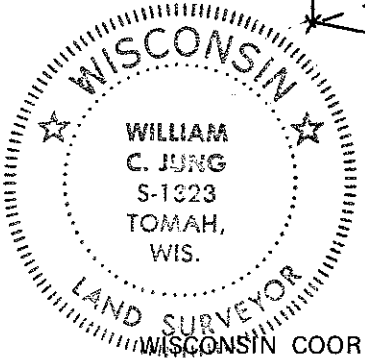
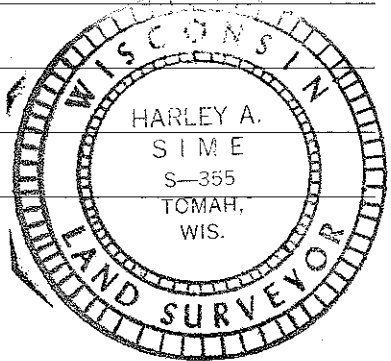
Found a 2" iron pipe that had been used in previous surveys.

Harley A. Sime  
County Surveyor  
Title

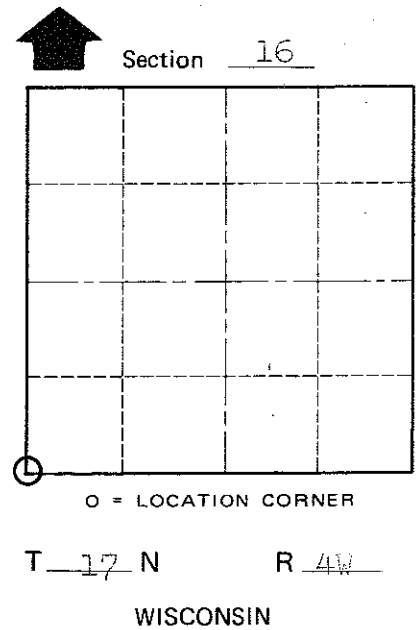
Description of corner and witness monuments, references and accessories used to perpetuate the original or re-established location of this corner:  
Existing 2" iron pipe.

Witnesses to corner location:

W.C. Jung - Crew Chief *W.C. Jung*  
G. Sime



SIGN PLACED 9-21-89 *H.A.*



COUNTY SURVEYOR FORM NO. 1

SURVEY CONTROL ORDER

Horizontal \_\_\_\_\_  
Vertical \_\_\_\_\_

Corner	East (X)	North (Y)	Elevation (Z)	Zone
Control Sta. Name				

City, Village or Town Sparta  
County of Monroe